

PEEK INSIDE THIS ISSUE:

Cover Story: Emergency and Backup Power Solutions by AC WORKS®

Tips from Tony.

Featured Products.

Industry News article feature.

Featured Products continued.

Customer Favorites.

Important News.

Coming Soon..

Behind the Scenes.

Upcoming Events and Tradeshows.

PAGE ONE

PAGE TWO

PAGE THREE

COVER STORY

Emergency and Backup Power Solutions by AC WORKS®

Emergency power products are a necessity in all areas. You never know how or why your power will go out. If you have a backup generator and transfer switch system, a gasoline-powered generator, borrowed power from a neighbor, or are plugged into an RV pedestal we have solutions for you.

Emergency Power Kits

- EPL1420KIT
- EPL1430KIT
- EP1450KIT



Heavy Duty Extension Cords

- HD515PR



Super Duty Extension Cords

- SD515PR
- SD520PR
- SD515520



Chainable PDU Extension Cord

- PD4GF-010

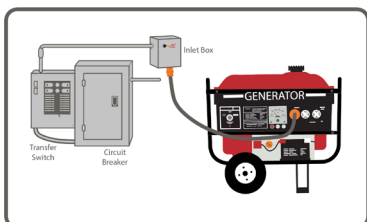


Flexible and Extension Cords

- L1430CBF520-025

The L1430CBF520 is one SKU of an entire product line of CBF520 products containing 20 Amp circuit breakers and 4 household outlets, learn more in our CBF520 Product Update video.

We also have compact-sized adapters for a variety of power solution options.



FEATURED PRODUCTS

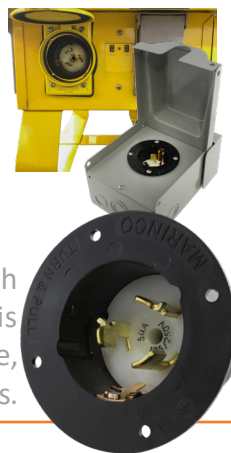
SD520PR

This super-duty extension cord is used with transfer switches, generators, industrial construction, and EV trickle charging. The cable is an SOOW, 10/3, 30A copper wire with a 600 Volt rubber jacket and will reduce voltage drop over long distances.



CS6375

This inlet wiring device is a heavy-duty power input connection device. It is used for an industrial and commercial grade flange inlet. This inlet works with 6 AWG copper wire and is common for residential use, transfer switches, and cabins.



TIPS FROM TONY

Our SKUs are universal across all sales channels. There are small exceptions on a couple of channels, but our SKU's will still get you the same result.

This also goes for acworks.com and the Canadian site acworks.ca. The SKU or Part Numbers, are exactly the same between the US based site and Canada based site.

FEATURED PRODUCTS

PB1450520 Piggy-Back Adapter

This adapter is heavy-duty NEMA 14-50P and a 14-50R to a NEMA 5-20R 15/20A household connector. The NEMA 14-50P is a 50A, 4-prong male plug. The backside of this plug comes with a matching NEMA 14-50R connector. With this, you have a variety of power solutions in addition to the female end. The female end is a NEMA 5-15/20R, 15/20 Amp, 125 Volt, household connector. Using the piggy-back function, you can run more than one appliance from a NEMA 14-50 outlet, not exceeding 50A.

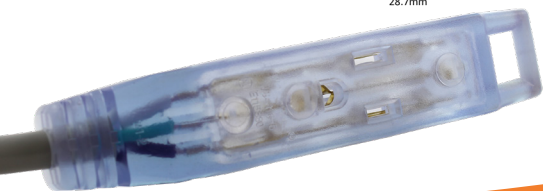


CUSTOMER FAVORITES

C14B515-018

This AC WORKS® brand IT power strip cord is an IEC C14/Sheet E plug to a household style power strip. The overall length is 1.5 feet and the cord is an SJTW, 16/3, power bar tri-outlet.

- 300 Volt Weather Jacket
- 13 Amp Copper Wire
- Mounting holes
- 5 year warranty



AC WORKS® NEWS

Mark Downs and Discounts

As you may remember we started creating new designs for the barrel adapters. As they have been rolling out into production we have been marking down the old style. Save on compact adapters by purchasing the old style (while supplies last).

Visit our website's promotional page to find out more about our discounts and coupons. We are running a BOGO discount on the E520CB520 and the E620CB620 flexible adapters.

We also post our discounts and sales on our Facebook page.

[@acworksconnectors on Facebook](#)



Industry News

Hurricane Season

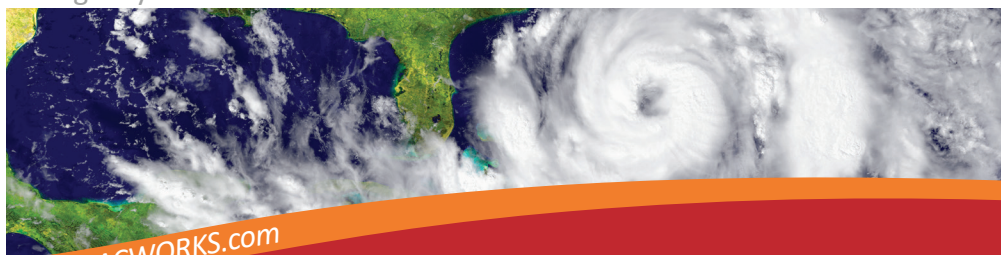
Hurricane Alley has not seen so little activity in 25 years. Hurricane Alley's path follows the warm waters of the Atlantic from west Africa across the Atlantic to the Caribbean and Gulf of Mexico. The waters of Hurricane Alley had a storm free August in 1961 and 1997.

Hurricane season runs from June through November, with August usually being the beginning of the peak. The most active portion is typically The last week of August through mid-September. This year we are seeing one of the slowest starts to the Atlantic hurricane season that we have seen in decades.

So far, there have been three named storms; Alex, Bonnie, and Colin, but no hurricanes. The season predictions have slightly decreased since May. Conditions favoring an active season include La Nina, weaker tropical Atlantic trade winds, active west African monsoon, and increased Atlantic sea surface temperatures.

If you have not done so, it is time to make sure you have a hurricane plan. Keep emergency food, water, and medical supplies on hand. Fill your bathtub in case you need the water to flush your toilet. Keep safety and personal items, like a fire extinguisher. Important documents like birth certificates, social security cards, passports, and a will should be kept in a waterproof safe or container for easy transportation in an emergency.

Make sure you have plenty of gasoline for your generator and vehicle. Keep flashlights, extension cords, batteries, and any adapters safe and ready for an emergency.



www.ACWORKS.com
(414) 434-2220

BEHIND THE SCENES

We are re-stocking our shelves.



SOCIAL MEDIA

Social Media Channels

FACEBOOK

Follow AC WORKS® on **Facebook** and learn more about our products, find discounts and more. You can also leave us a review on Facebook to help other customers.

INSTAGRAM

View products behind the scenes, in development, and during special events.

TWITTER

Industry related news and updates, newsletters, and deals are shared here.

LINKEDIN

Hiring and company update events.

E-mail your questions to
info@acconnectors.com

UPCOMING SHOWS

Tradeshow, Expo, and Event News

EWPTTE 2023: Milwaukee, WI | May 16-18, 2023

The Wisconsin Center District and Expo Productions Inc. has announced the Electrical Wire Processing Technology Expo dates for 2023.

HIMSS23: Chicago, IL | See you in Chicago.

We will see you at HIMSS23 in Chicago, Illinois. ***We will see you next year in Chicago at the McCormick Place.***

PRODUCT FOCUS

Sump Pump Emergency Power

Powering your sump pump using a generator is an easy solution during a power outage. It is crucial to know how to do this safely. You will need an extension cord to reach from the sump pump to the generator outside.

Unplug your sump pump, connect it to your extension cord, then start your generator. Once the generator is running, you can plug your sump pump back in. If the generator outlet you need for your sump pump is occupied, we have adapters to help you.

Make sure you keep the generator far away from windows, doors, and any ventilation in the house. Keep enough gasoline on hand to power the generator through the power outage, and keep it on dry level ground. If you cannot keep it dry to due weather try to cover it with a canopy.



IMPORTANT DATES TO REMEMBER

SEPTEMBER

*Labor Day 5
Patriot Day 11*

OCTOBER

Halloween 31