

PEEK INSIDE THIS ISSUE:

Cover Story: HIMSS 2021 in Las Vegas.

Tips from Tony.

Featured Products.

Industry News article feature.

Featured Products continued.

Customer Favorites.

Important News.

Coming Soon..

Behind the Scenes.

Upcoming Events and Tradeshows.

PAGE ONE

PAGE TWO

PAGE THREE

COVER STORY

HIMSS 2021 Las Vegas, Nevada

Despite low numbers, due to the ever-changing COVID situation, we still feel our first time showing at HIMSS was a success! At first, because of last-minute cancellations, our booth felt lonely. But, on the second day, we were given the chance to move closer to the action. More exhibitors and attendees stopped by to talk about their power solution needs, take our information, and leave theirs for prospective orders in the future.

Not only did we gain potential leads for future sales, but we also learned more about what our clients are looking for. Many of our visitors were looking for medical-grade power strips, like our MD204 line of products, at a better price than what our competitors are giving them.

Another power strip we offer, like WS-045-0-4, was talked about a lot. Most IT professionals mentioned they were crucial for data centers, and the more outlets it has the better.

Many visitors encouraged us to look into contracts through the Government Services Agency. Through there, we would be able to supply our medical cables to a wide variety of federally funded projects. Working with the GSA would also give us more legitimacy and a higher reputation in the medical grade power cable industry. This is something we are currently looking into and pursuing.

Many of the mobile carts you see in hospitals are completely switching to battery power, but the cables inside and for the chargers are still highly sought after.

With all of this new knowledge in mind, we are working hard to grow our business, and attend HIMSS22 in the Spring! We are hoping the exhibitor and attendee numbers will be closer to normal by March, and we will keep you up to date on that in this newsletter. Thank you to all who stopped by our booth and liked our social media posts from the show. We look forward to seeing you in March!

When you send us pictures, please send us the outlet you are trying to use and the plug you are trying to use with it. That way we have a definitive answer for what the plug and connector configurations need to be for the adapter you are looking for.

FEATURED PRODUCTS

ASL1430PBX

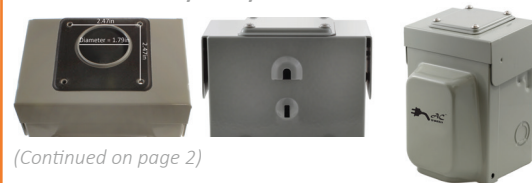
This AC WORKS® brand transfer switch inlet box is durably constructed with heavy-duty thick metal to withstand the elements. This Inlet box contains a NEMA L14-30P, 30 Amp, 125/250 Volt 4-prong locking plug.

GE Brand and Midwest Brand raintight hubs fit the top access port.

Note: 10 Gauge wire for 30 Amp, 8 Gauge wire for 40 Amp.

Please search online "Conduit Hub Accessory" for the top access port and "Electrical Conduit Accessories" for the other ports. We do not carry inlet box conduit accessories.

- Transfer Switch Inlet Box
- L14-30, 30 Amp, 125/250 Volt Locking Inlet
- 4-Prong Locking Plug Power Inlet Box
- Durable Heavy-duty Thick Metal Construction



(Continued on page 2)

TIPS FROM TONY

We often ask you for pictures of the two connections you are trying to adapt. A lot of times, we get two pictures of male plugs, which can make the situation confusing.

FEATURED PRODUCTS

ASL530PBX

This AC WORKS® brand transfer switch inlet box is durably constructed with heavy-duty thick metal to withstand the elements. This Inlet box contains a NEMA L5-30P, 30 Amp, 125 Volt 3-prong locking plug.

- Transfer Switch Inlet Box
- L5-30, 30 Amp, 125 Volt Locking Inlet
- 3-Prong Locking Plug Power Inlet Box
- Durable Heavy-Duty Thick Metal Construction
- Two combinations 1/2-and 3/4-inch knockouts, 4 combinations up to 1", and one combination up to 1 1/4-inch
- 5-year Limited Warranty



CUSTOMER FAVORITES

G2EVTT30-24A

This NEMA TT-30 adapter comes installed with a chip that pre-sets your charging limit to 24 Amps. It can be used with your Generation II Tesla mobile Connector to charge your car at a campsite/RV outlet.

We have many charging solutions available which include locking adapters.

- NEMA TT-30P Plug with Easy Unplug Handle Feature
- Tesla EV Charging Generation 2 Connector
- Nickel-Plated to Prevent Rusting
- Built-In Temperature Monitor to Sense Faulty Outlets



PRODUCT NEWS

Find Ways to Use the SD515PR

Home renovation is still on the rise. Whether that be professionally, or as a hobby, it always pays off to be prepared for the job.

Air compressors can be used for a variety of different power tools, like an air nail gun. Air compressors can tend to get bogged down or have problems running properly when using an extension cord to power the appliance. The long extension cord length and constant use can cause voltage drop and overheating, which can make your project run longer than anticipated.

That is where our super-duty cords come into play. Our super-duty NEMA 5-15 cables are made with 10 gauge copper wire instead of the typical 14 gauge that is associated with regular household cords. The larger gauge helps reduce voltage drop and prevents overheating during use. Our cable jacket is also made of rubber, which always keeps the cord extremely flexible. A contractor recently used our SD515PR cable and was able to work efficiently using an air nail gun because the cable never got bogged down over a long period of time.

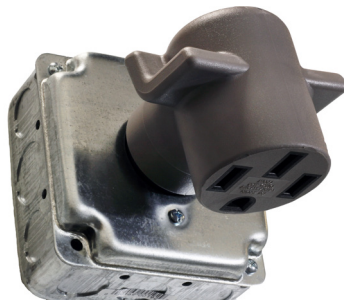
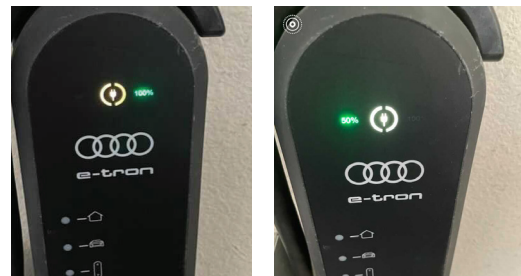
INDUSTRY NEWS

When using a 14-50 outlet and 50 amp adapter you have the ability to charge your Audi E-tron at 100% capacity or 40 amp. When you need to use a 30 amp outlet like the NEMA 10-30, NEMA 14-30, and the NEMA L6-30 locking outlet there is a good chance you could trip a breaker at 100% charging capacity.

To help protect from this problem all you do is change the charging limits on your Audi E-tron to 50% capacity. This will draw 20 Amps rather than 40 Amps and give the ability to charge faster than a trickle charge without tripping your breaker.



We have multiple adapters to help you find a charging solution including the EV1030MS, the EV1430MS, and the EVL630SS. If you don't find the solution you are looking for here please reach out to us.



www.ACWORKS.com

WRAP UP

BEHIND THE SCENES

HIMSS22 Is Coming

We recently booked our booth space for HIMSS22 in Orlando, Florida. HIMSS will be going back to March starting 2022 so it will seem like we are there back to back for the 2021 and 2022 shows.

DID YOU KNOW?

FAQ's

Many questions are commonly asked by multiple customers about different power solutions. A lot of times these topics are related to RV, EV, and job site power.

We compiled a list of frequently asked questions on our website and answered them with helpful videos.

Make sure you take a look at our Frequently Asked Questions section and if you still have questions please reach out.

FREQUENT FEATURE

What is on the warning tag? Learn all about our product warning tags in this helpful YouTube video. Don't forget to subscribe to our channel while you are there.



AC WORKS® Wisdom: What's On The Warning Tag

E-mail your questions to info@acconnectors.com

Cordtec Power Corp. | AC Connectors | AC WORKS®
9811 South 13th Street - Oak Creek, WI 53154
Phone (414) 434-2220 Text (414) 323-3240
www.ACWORKS.com | info@acconnectors.com

UPCOMING SHOWS

tradeshow, expo, and event news

HIMSS22: Orlando, FL | March 14-18, 2022

We will see you at HIMSS22 in Orlando, Florida. **You will find us in booth #6465.** There will be a quick turn around to HIMSS22 in Orlando in March of 2022, and we plan to see you there.

EWPTTE 2022: Milwaukee, WI | May 10-12, 2022

The Wisconsin Center District and Expo Productions Inc. has announced the Electrical Wire Processing Technology Expo **dates for 2022 are May 10-12, 2022 for EWPTTE.** Find us in booth #1916 next spring.

COVID-19 Coronavirus Statement

As all communities work diligently to best address COVID-19 (coronavirus), we want to maintain as safe an environment as possible. We will continue to operate as normal as possible during this challenging period and ask that staff and customers join us in observing best practice keeping as safe as possible.

NEW RELEASE PRODUCT

This AC WORKS® brand Y-adapter [1030YCB520] is very durable with a length of 3 feet. It is a NEMA 10-30P to two NEMA 5-20R with 20A circuit breakers. The adapter is used to get power from a 125/250 Volt outlet to two 125 Volt household connections. In order to do so, you need to use the grounding wire attached.

We also have the [1050YCB520] which is the same product with a different plug. It is a NEMA 10-50P to two NEMA 5-20R with 20A circuit breakers. This adapter is used to get power from your 125/250 Volt outlet to two 125 Volt household connections. In order to do so, you need to use the grounding wire attached.



IMPORTANT DATES TO REMEMBER

SEPTEMBER

Labor Day September 6
Patriot Day September 11
World Meritime Day September 30

OCTOBER

Columbus Day October 11
Boss's Day October 16
Halloween October 31

WRAP UP