

YAMAHA YZF-R3 / R25 2015 - 2018 DIY WINDSCREEN INSTALL

Installation Instructions for Yamaha YZF-R3 / R25 2015 - 2018

Thank you for purchasing Zero Gravity's windscreen (a screen which has been designed and manufactured to give years of safe & fun riding). These instructions give you an in-depth look at the installation process. To receive further assistance or parts please call the Zero Gravity® Sales Department at 805-388-8803 or E-mail at techinfo@zerogravity-racing.com.

PLEASE READ BEFORE INSTALLING YOUR WINDSCREEN

Helpful hints: Use metric tools, clean hands, and put the bike on a stand. Do not pry on the screen excessively, as it can break without much warning.

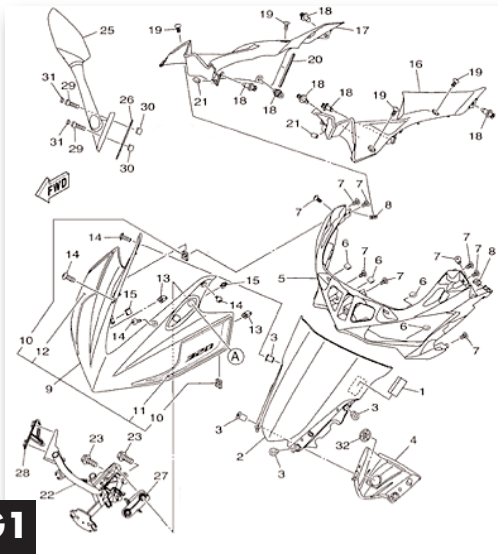


FIG1

Fig 1. Before starting disassembly, please review this instruction sheet to better understand the install / uninstalled process. The installation of the Zero Gravity screen is in reverse.

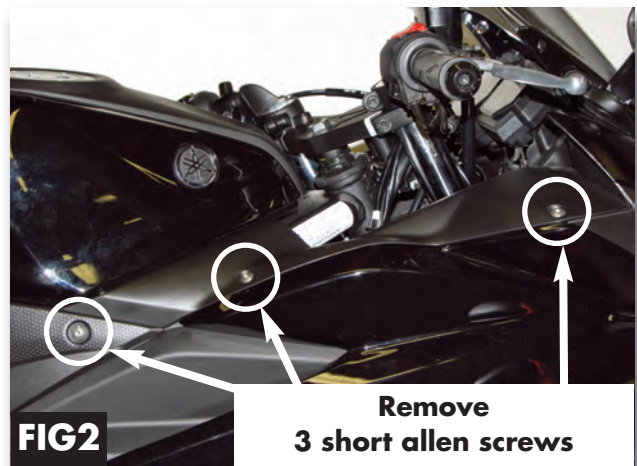


FIG2

**Remove
3 short allen screws**

Fig 2. Remove the top side cover panel by removing the three short allen screws from each side of the bike.



FIG3

**Remove plastic clip beneath
the side cover panel**

Fig 3. Remove the plastic clip from beneath the side cover panel from both sides of the bike.

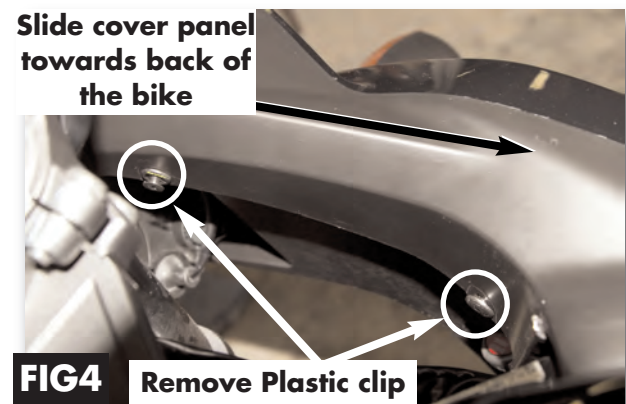


FIG4

Remove Plastic clip

Fig 4. Next, remove the inner two plastic clips visible from the top of the bike. Finally, pull up and slide the panel to the rear of the bike to release the remaining tabs and remove the panel. Repeat this on the other side of the bike.

YAMAHA YZF-R3 / R25 2015 - 2018 DIY WINDSCREEN INSTALL



Remove 1 screw from each side

FIG5

Fig 5. Remove the two screws on either side of the headlight housing that fasten the front fairing to the headlight.

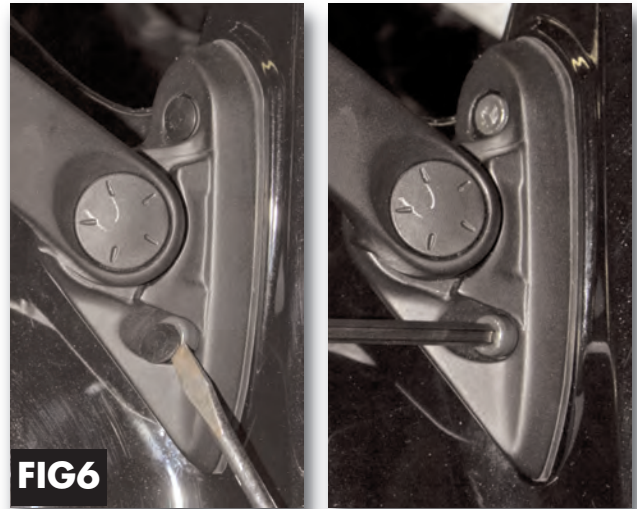


FIG6

Fig 6. Remove the side mirrors from each side. The allen screws holding the mirrors in place are hidden under plastic caps. Remove the caps, then remove the allen screws.



FIG7

Fig 7. At this point the fairing is mostly loose, and is only held in place by several clips. To remove, standing in front of the bike and pull it evenly and firmly straight towards you (as shown in the video).



Fig 7. To visually see this, we made a YouTube video. Scan this QR code with your mobile phone, it will take you straight to the video or click below for a quick video.

<https://youtu.be/V1bul0DeTqg>



Remove the 4 phillips screws

FIG8

Fig 8. Remove the four plastic phillips screws that hold the windscreen in place.

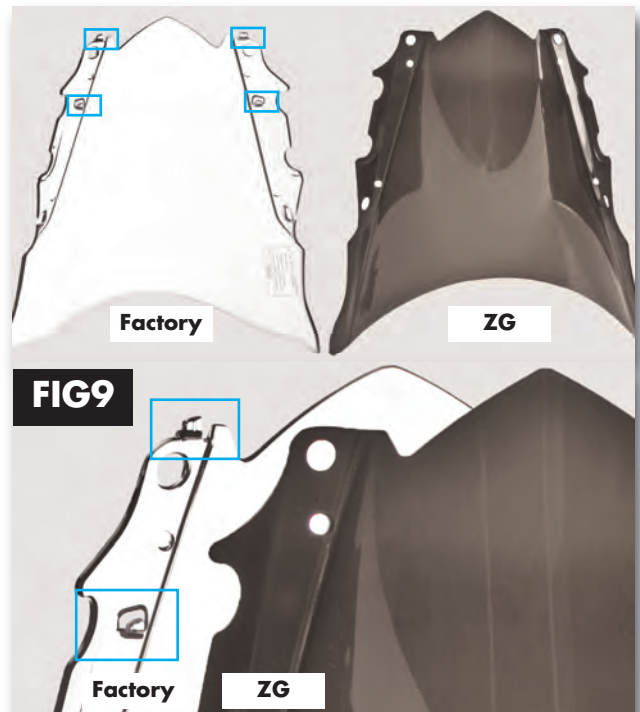


FIG9

Fig 9. Factory screen has 4 rectangular clips to mount the cover screen onto the windscreen. Zero Gravity's screen omits these holes and clips. These are primarily for O.E. factory assembly and are NOT necessary to hold windscreen in place.

YAMAHA YZF-R3 / R25 2015 - 2018 DIY WINDSCREEN INSTALL

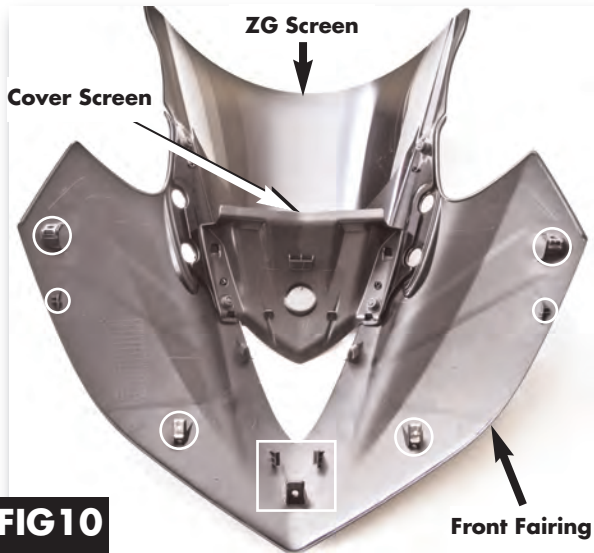


FIG 10

Fig 10. Assemble your new ZG screen, cover screen and front fairing together as one assembly unit. To do this insert the two forward wellnuts through the windscreen and cover screen and the rear two well nuts through the windscreen only. Then place the windscreen / cover screen assembly on the underside of the front fairing aligning the windscreen holes with the fairing holes. Insert and tight the windscreen fastener screws.

Note: The picture above has all of the major clips highlighted in circles and mounting clips in a square. Before any pressure is applied, read **Fig 11** for trouble free install. Then place pressure in these highlighted positions shown above when installing, an audible snap will insure the front cowl is installed. Follow the instructions carefully in reverse starting from **Fig 6**, to finish up.

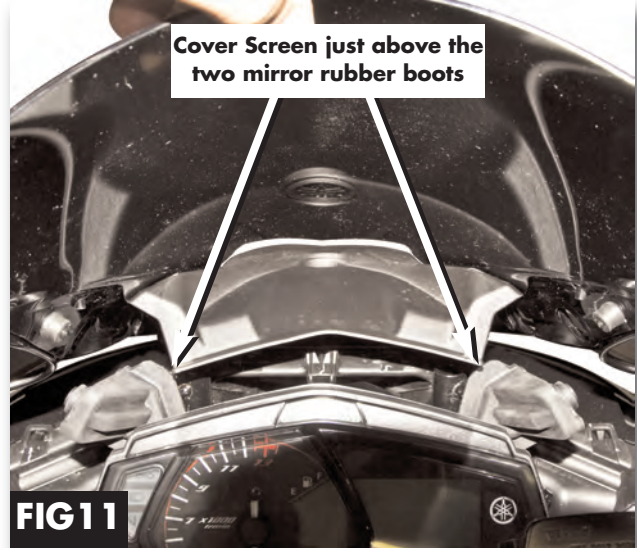
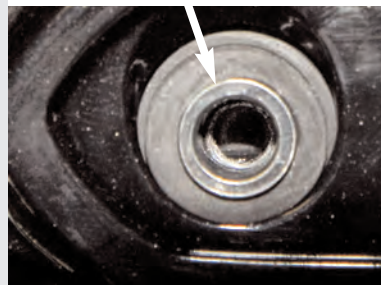


FIG 11

Fig 11. Before pushing the assembly unit part in place, align the cover screen just above the two mirror rubber boots. This will allow for the assembly unit to snap in place without much strain.

SPECIAL NOTE: FRONT COWL ALIGNMENT

Mirror rubber boot standoff screw will bind if not aligned



Take special precautionary steps when installing your new ZG windscreen, make certain the two mirror rubber standoffs are aligned with mirror pads and stacked with front fairing, windscreen, and cover screen. Mirror allen screws should not bind when aligned correctly. Stop if the installed screw bind, then realign and retry installing allen screws.

