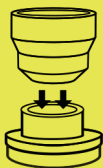


Nozzles



Use widest attachment for large inflatable devices.

Recommended for inflatable sofas and raised mattresses



Recommended use: pool floats



Recommended use: inflatable tubes, smaller inflatable pool devices, etc

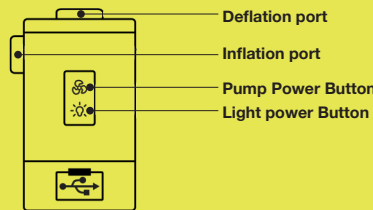


Recommended use: vacuum storage bags

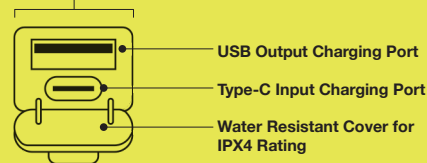


Recommended use: standard sized air mattresses

Controls



Charging Ports



Troubleshooting

Contact us at info@shopuspeakers.com for troubleshooting help

Speakers
BY FASHIONIT

Check out our full line of products!

www.shopuspeakers.com



Scan the QR code with your phone to access the U Speakers website.

info@shopuspeakers.com @uspeakers
www.shopuspeakers.com

Designed by Fashionit/U Speakers in the USA.
Made in China 2023, All Rights Reserved to I&G Designs and Logistics. DBA Fashionit® U Speakers®

Speakers
BY FASHIONIT



USER MANUAL

UCAPSULE

The U Capsule is a multi use air pump that also functions as a flashlight and a power bank.

How to charge the U Capsule:

1. Using the included Type-C charging cable, plug the Type-C end into the designated port (See the charging ports diagram).
2. Plug the USB end into a power source with USB output port.
3. A red light indicator will come on to show that the item is in charging mode. Once the U Capsule is fully charged, the light will turn green.

Air Pump Function:

1. To use the air pump function, choose the nozzle that best suits the inflatable product that you're using.
2. Connect the nozzle to the inflation port on the side of the U Capsule.
3. Open the valve cover on your inflatable product and connect the nozzle to the valve securing it tightly.
4. Turn the pump ON using the power button as seen on the control diagram.
5. Depending on the pressure needed use the different modes below:
 - double click the power button for high pressure
 - hold the power button down for low pressure

Vacuum Function:

1. To use the vacuum function, choose the nozzle that best suits the inflatable product that you are using.
2. Connect the nozzle to the deflation port on the top of the U Capsule.
3. Open the valve cover on your inflatable product and connect the nozzle to the valve securing it tightly.
4. Turn the pump on using the power button as seen on the control diagram.
5. Depending on the pressure needed use the different modes below:
 - double click the power button for high pressure
 - hold the power button down for low pressure

Lantern/Light Function:

1. To turn the flashlight on, double click the Light power button as seen on the control diagram.
2. To adjust the brightness, hold the power button down until you reach the desired brightness from high to low.

Powerbank Function:

1. To use the U Capsule as a power source, plug in the desired charging cable into the the USB output port and plug the other end into your device

Note:

1. The U Capsule is IPx4 Water Resistance.
2. A red light indicator signifies that the U Capsule

MULTI-USE MICROPUMP

INFLATOR • DEFLATOR • BLOWER • POWERBANK • LIGHT



UCAPSULE