



**SKYWALKER**



## Replacing your **SkyWalker** Shell.

Duration: approx. 30min

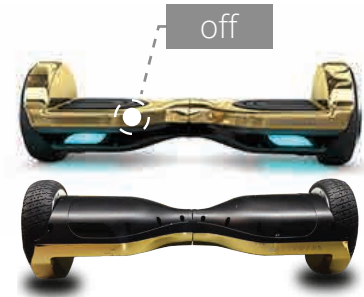
Equipment needed: Screwdriver (manual or automatic)

Watch the full instruction video **You Tube** <https://youtu.be/UxmQ7yJhVG8>

[www.skywalkers.com.au](http://www.skywalkers.com.au)

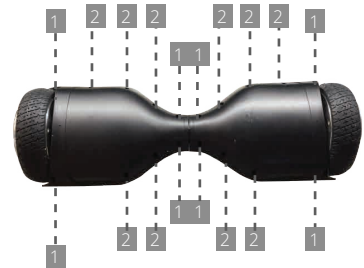


**1** Turn your Sky walker OFF and turn it upside down.

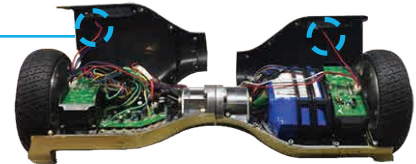


**2** Remove screws from bottom case.

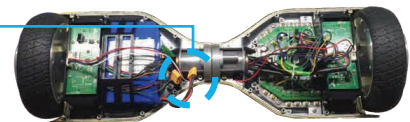
- 9 screws per side.
- Keep outer 2 screws/ inner 2 screws separate (TYPE 1 screws).
- Keep 5 middle screws separate (TYPE 2 screws).



**3** Unclip cable from Sky Walker connected to bottom case, place aside.



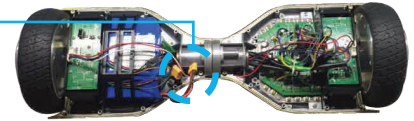
**4** Open left bottom case- Disconnect yellow plug.



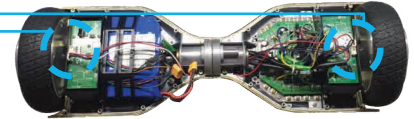


SKYWALKER

**5** Open right bottom case. Unclip cables from Sky Walker.

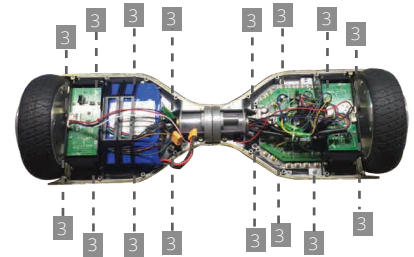


**6** Unclip 2 cables from the Sky Walker leading the gap in the middle of the board.



**7** Remove screws that are connected to the top case.

- 8 screws (TYPE 3) on each side. Keep screws separate from Type 1 and 2.



**8** Hold onto axel and turn Sky Walker facing up.

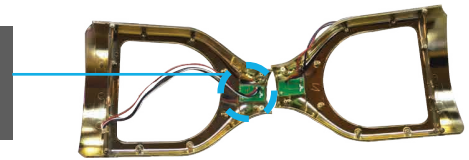


**9** Remove top cases; threading cables through gap in the middle of the board..



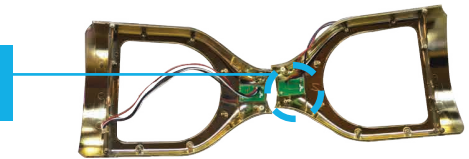
**10** Remove the green board connected to top shell and screw in identical position

(cable on same side) on new top shell.

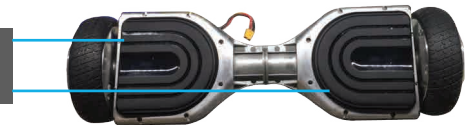


**11** Repeat with other top shell.

Cables on green board should be positioned on opposite side of each other.



**12** Place black pads on each side of the Sky Walker.





SKYWALKER

- 13** Put new top shells on Sky Walker, threading cables through gap.

Turn your Sky Walker facing up.

- 14** Secure the top case to the Sky Walker

8 screws each side.

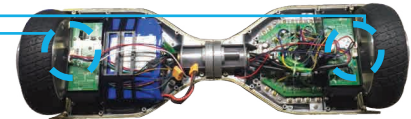
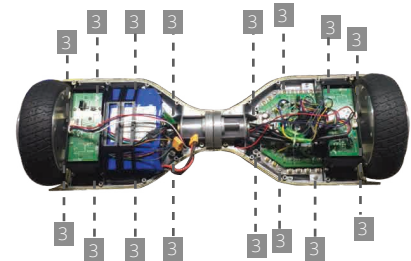
-Careful not to secure screws too tight to avoid cracking plastic.

- 15** Connect the 2 cables leading from the middle gap into the green board on each side of the Sky Walker.

- 16** Connect 3 cables from RIGHT bottom shell into the Sky Walker. Hold bottom case in place

secure 4 (TYPE 2 screws) in middle of the board.

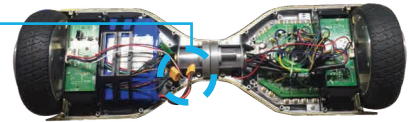
- Each cable is specific its port and cannot be miss connected.



**17** Connect cable from LEFT bottom shell into Sky Walker.



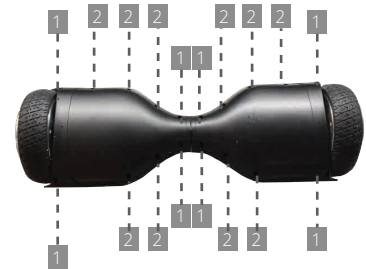
**18** Connect yellow plug (from step 4), tuck under. Hold bottom case in place (Ensure bottom and top case line up)



secure 4 (TYPE 2 screws) in middle of the board.

**19** Secure remaining TYPE 1 screws (inner and outer).

Cables on green board should be positioned on opposite side of each other.



**20** Turn your Sky Walker over, facing up.



Don't Walk.. **Sky Walk!**