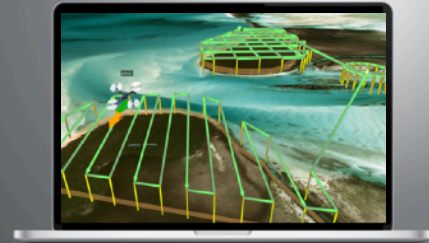


# LEADING DRONE CONTROL SOFTWARE



Safe and efficient toolset for UAV land surveying and industrial inspections. LIDAR, Magnetometer, GPR, automatic Area, Photogrammetry, Corridor, Vertical, and SAR survey planning tools with custom elevation data import and terrain following mode.

Supports most popular UAV platforms: DJI M600, M300, M200, Inspire, Phantom 4, Mavic and series, Parrot and Mavlink compatible Pixhawk/APM.



## LICENCE FEATURES COMPARISON

Mission planner   Drone control		
Aerial surveying tools:		
Waypoints, Linear, Circle, Perimeter, Area Scan tools	Y	Y
Automatic Photogrammetry, Vertical (Facade) scan, Corridor mapping tools	Y	Y
Automatic Expanding square, Creeping line (SAR) tools	Y	Y
Flying long routes with battery exchange	Y	Y
Immersive 3D mission planning environment	Y	Y
Elevation profile	Y	Y
Telemetry display & Telemetry widget	Y	Y
Automatic flight mode (waypoints)	Y	Y
Manual mode	Y	Y
Joystick and keyboard control	Y	Y
Click & Go	Y	Y
Software emulator	Y	Y
<b>Multi-drone support</b> plan and fly multi-drone missions	Y	Y
Post-flight analysis and Image processing		
Geotagging	Y	Y
Telemetry player	Y	Y
Custom maps		
3D Building import	Y	Y
KML/CSV data import	Y	Y
DEM data import	Y	Y
Geo-referenced images import	Y	Y
No-Fly zones		
No-Fly zones - airport registry	Can be disabled	Can be disabled

		
No-Fly zones - create custom zones	Y	Y
Set fly zone limits for routes	Y	Y
<b>ADS-B Support</b>		
<b>ADS-B Receiver</b> Supported: microadsb; uAvionix pingRX and pingUSB	Y	Y
<b>ADS-B Transponder</b> Supported: Sagetech XP		Y
<b>Video features</b>		
Video recording drones internal storage	Y	Y
Camera footprint	Y	Y
Video streaming from <b>UgCS for DJI</b> to <b>UgCS CC video player</b>		Y
<b>Custom development</b>		
Multi-drone support	Y	Y
SDK support Build custom apps and integrations to connect <b>UgCS</b> with existing systems and workflows	Limited	Unlimited
Multinode installation	Y	Y
<b>Support with valid Annual Support&amp;Update pack</b>		
E-mail support	<a href="mailto:support@ugcs.com">support@ugcs.com</a>	<a href="mailto:support@ugcs.com">support@ugcs.com</a>
Phone support 8x5 working hours: Mo-Fri 09:00-18:00 (UTC+02:00)	Y	Y
Support 24x7	\$	\$
First year's Support&Update pack	Included	Included
Annual Support&Update pack (starting second year)	USD 120,-	USD 400,-
<b>Supported Drones and Autopilots</b>		
<b>DJI</b> Matrice 600/600 Pro, Matrice 300, Matrice 200/210/210RTK, Matrice 100, Inspire 2, Inspire 1/1 Pro/Raw, Phantom 4/4Pro/4Pro v2, Phantom 3, Mavic Pro/2 series, Spark, A3, N3	Y	Y
<b>Ardupilot, Px4 and other MAVLink compatible multirotors, fixed wings and VTOLs</b>	Y	Y
<b>Parrot</b> ANAFI	Y	Y
<b>Autel</b> EVO II (currently, route can be exported for flight with Autel Explorer)	route export	route export
<b>Mikrokopter</b> Quadro XL, Octo XL, Hexa	Y	Y
<b>MicroPilot</b> Multicopter, Helicopter, Plane	Y	Y
<b>Lockheed Martin</b> Kestrel, Indago	Y	Y

Y = Included; \$ = Request a quote [ugcs@ugcs.com](mailto:ugcs@ugcs.com)