

PRODUPLICATOR

**CD DVD BD Duplicator
Daisy Chain**

User Guide

V5.40

Content Index

Chapter 1. Basic Introduction			
1. Features	3	9-4. Show Image Info.	21
2. System Overview	3	9-5. Rename Image	21
2-1. Package Content	3	9-6. Delete Image	22
2-2. Other components necessary for assembling the Duplicators	3	9-7. Show HDD Info.	22
2-3. SATA Controller Hardware Installation Guide	4	9-8. Format HDD	22
		9-9. Load & Copy	23
Chapter 2. Function Table		Chapter 4. Specification	
Function Table	6	Specification	24
Chapter 3. Function Operation		Chapter 5. Appendix	
1. Copy	8	Lightscribe Operation	25
2. Test	9	Error Message	29
3. Compare	9		
4. Copy + Compare	10		
5. Set Burn Speed	11		
6. Select Source	11		
7. Utility	12		
7-1. Information	12		
7-2. Erase Disc	13		
7-3. PreScan Source	14		
7-4. Track Edit	15		
7-5. Eject All Disc	15		
7-6. Copy Counter	15		
7-7. Update BIOS	16		
7-8. PRINT LS Label	16		
8. Setup	17		
8-1. Auto Start Time	17		
8-2. Display Mode	17		
8-3. Button Beep	18		
8-4. Eject On Start	18		
8-5. Reader Speed	18		
8-6. Compare Speed	18		
8-7. Language	18		
8-8. Clear Setup	18		
8-9. Advanced Setup	18		
9. HDD Manager <small>(For HDD-installed duplicator)</small>	20		
9-1. Select Image	20		
9-2. Disc to Image	20		
9-3. Set Reader Speed	21		

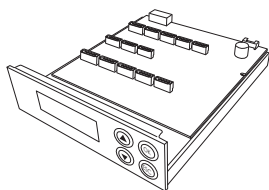
Chapter 1. Basic Introduction

1. Features

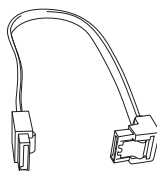
- No PC needed. Independent SATA to SATA DVD / Blu-ray Disc Duplication.
- Special Synchronous Load and Copy technology. When the system was installed with HDD, the system will load master source disc to HDD while copying disc to disc. In 2nd run copy, the system will automatically copy from HDD instead of from the source reader.
- Support high speed 20× DVD, 52× CD, 8× Blu-ray burning.
- High compatibility with variety brands of burner.
- Easy assembly SATA port arrangement.
- Support Lightscribe printing.

2. System Overview

2-1. Package Content



Controller



SATA Cables(180°)



User Manual

2-2. Other components necessary for assembling the Duplicators



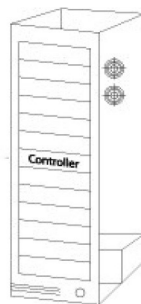
HDD



CD/DVD-RW ROM



CD/DVD-RW ROM
Writer

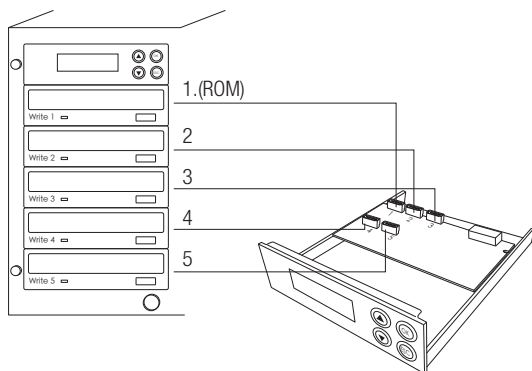


Case

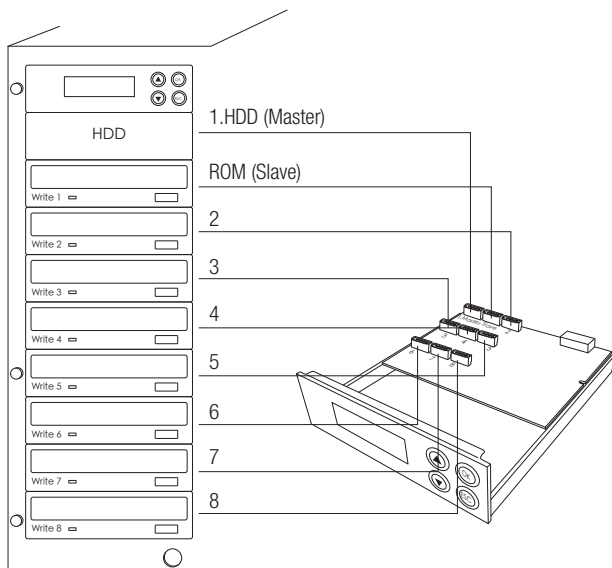
Chapter 1. Basic Introduction

2-3. SATA Controller Hardware Installation Guide

Example: 1-4 installed

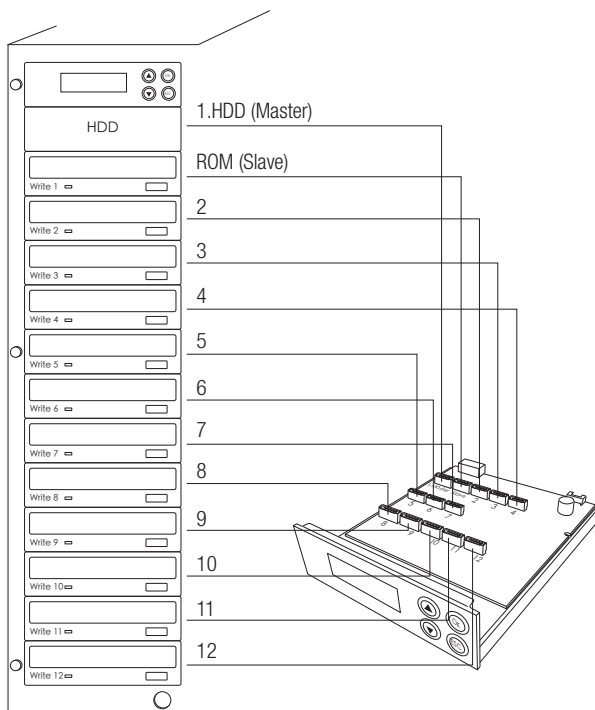


Example: 1-7 installed



Chapter 1. Basic Introduction

Example: 1-11 installed



Chapter 2. Function Table

Function	Sub-function	Description	
1. Copy		To copy disc to disc or copy disc from HDD.	
2. Test		To simulate copy process.	
3. Compare		To bit by bit compare between source disc and copied discs	
4. Copy & Compare		To copy first and compare the copied discs later. To ensure data correctness.	
5. Set Burn Speed		To set burning speed for duplication.	
6. Select Source		To select source from any optical drive or hard disk drive.	
7. Utility	1. Information	1. Disc Info.	To check the format of disc, burning speed supported and total capacity or data size.
		2. Drive Info.	To check the version, model No. and brand name.
		3. System Info.	To check the model No. and firmware version.
	2. Erase Disc	1. Quick Erase	To quick erase data from rewritable disc.
		2. Full Erase	To full erase data from rewritable disc.
	3. PreScan Source		To check source disc's readability.
	4. Track Edit	1. Copy Track	To select and combine audio tracks from various CDs into a single customized audio CD.
		2. Close Disc	To close the disc after track copying to make the CD playable on CD player.
		3. Disc Info.	To check the audio CD's status of usage.
	5. Eject All Disc		To eject all trays.
	6. Copy Counter	1. Show Count	To check how many discs copy successfully and failed.
		2. Enable Counter	To enable or disable counter setting.
		3. Clear Counter	To delete the record.
	7. Update BIOS		To update the system's firmware.
8. PRINT LS Label		To print Lightscribe image.	

Chapter 2. Function Table

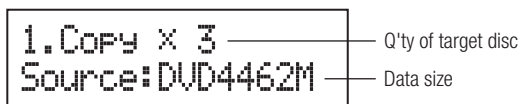
8. Setup	1. Auto Start Time		Allow the system to do the Copy, Test, Compare and Copy + Compare functions automatically.
	2. Display Mode	1. Basic	
		2. Show Timer	
		3. Show Speed	
	3. Button Beep		
	4. Eject On Start	1. Eject All Discs	To eject all trays with disc inside once the system is booted up.
		2. Do Not Eject	No eject any tray or disc once the system is booted up.
		3. Eject Target Only	Only eject target trays with disc inside once the system is booted up.
		4. Eject Source Only	Only eject source disc once the system is booted up.
		5. Eject All Trays	To eject all trays once the system is booted up.
	5. Reader Speed		To adjust the reading speed of source drive.
	6. Compare Speed		To adjust the speed of drives while comparing.
	7. Language		
	8. Clear Setup		To reset all the function back to manufacturer's default setting.
	8. Clear Setup	1. Power On Time	To set a warm-up time from 5 seconds to 99 seconds
		2. Startup Menu	To select which function you would like to show up in the beginning.
		3. Skip Reader Error	To set skip the read error and keep copying.
		4. Change Bad Master	To make the system eject source disc and ask for another one while the source disc is unreadable for system.
		5. CD Overburn	Set to copy overburn CD.
6. Show HDD Image Name		To show HDD image name or capacity on Copy, Test, Copy + Compare and Compare function.	
7. Keep Buffer		To set enable or disable load source to the buffer.	
8. Boot Password		To enable or disable the user administrative password.	
9. Setup Password		To set up the login password.	
10. Count Password		To set password for function "7.6 Copy Counter".	
11. Eject Tray if no disc		To set if users would like to eject trays when no disc is inserted.	
9. HDD Manager	1. Select Image		To select image file from HDD as your source for copy.
	2. Disc=> Image		To load your source disc to the built-in HDD.
	3. Set Reader Speed		To adjust the speed of source reader while you load image file from the reader to HDD.
	4. Show Image Info.		To check the disc format and data size of image file.
	5. Rename Image		To change the name of image file.
	6. Delete Image		To delete image file in the built-in HDD.
	7. Show HDD Info.		To check the information of the built-in HDD includes how many discs are stored and the free space is available.
	8. Format HDD		To format the built-in HDD.
	9. Load & Copy	1. Load First	To load the source to HDD and make copy at the same time.
2. Synchronous		To load source to HDD first and copy from HDD to disc.	
3. OFF		To disable Load & Copy function.	

Chapter 3. Function Operation

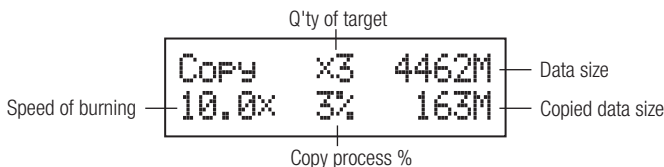
1. Copy

It is important to make sure that your source disc is placed in the right drive. You can check or select your source reader by [6.Select Source](#). (please refer to [6.Select Source](#), page 11)

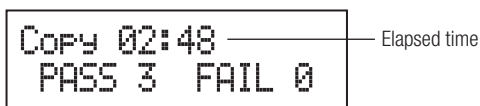
- 1 Select [1.Copy](#) and place source disc and blank discs into the proper trays. Then the system will detect the source disc and show the information.



- 2 Press **OK** to start copy.



- 3 Once the copy task is finished, the copied discs will be ejected and the result of copy task will show on the LCD:



NOTE :

Due to default setting of auto start time, the duplicator will start to copy automatically within a few seconds. You can set "OFF" to close the auto start function or set a longer waiting time. The default setting is 5 seconds.
(About this setting please refer to [8-1. Auto Start Time](#), page 17)

If HDD is selected to be the source reader, you have to upload the source to the built-in HDD and then follow copy process to do your copy task. How to upload data from disc to HDD please refer to [9-2.Disc to Image](#), page 20.




NOTE :

The default setting of source reader is the first drive.

Chapter 3. Function Operation

2. Test

This function will simulate the copy process to ensure error free duplication. During the simulation, it will be nothing left in the recordable discs.

- 1 Using / to select 2.Test and press .

```
2.Test x 3
Source: DVD4462M
```

- 2 Press  to start test

```
Test x3 4462M
10.0x 50% 163M
```

- 3 Once the test task is finished, the discs will be ejected and the result of the pass and fail discs for the test task will show on the LCD:

```
TEST 02:48
PASS 3 FAIL 0
```






NOTE :

- 1 This function is unable to support DVD+R blank disc.
- 2 If you use CD/DVD rewritable discs as your blank media in the simulation, all the content inside the discs will be erased permanently during test simulation.

3. Compare

This function will do bit-by-bit comparison between source disc and copied discs to ensure the copied discs are identical to source disc.

- 1 Place source disc and blank discs into Reader and Writer separately.
- 2 Using / to select 3.Compare and press  to start compare.

Chapter 3. Function Operation

```
3. Compare x 3
Source: DVD4462M
```

- 3 The system will detect the source and target discs automatically.

```
Comparex3 4462M
0.0x 50% 08:12
```

- 4 After detecting, the system will start to compare.

- 5 When the comparison has finished, the system will show the compare result.

```
Compare
Finished !
```

```
Compare 05:06
PASS 3 FAIL 0
```

4. Copy + Compare

This function will to do copy task first and execute comparison automatically when copy process has been finished.



NOTE :

In Copy, Test, Compare and Copy+Compare functions

- 1 If there is no source and target discs inside the duplicator, there will be nothing show on LCD.

```
1. Copy
Source: No
```

- 2 If the built-in HDD is selected as source, the information presents differen.

- 3 The information display of these 4 functions will be different based on the display mode you selected. (Please refer to [8-2. Display mode](#), page 17)

```
1. Copy x 3
Source: H(A001) ——— Image file name
```

Chapter 3. Function Operation




5. Set Burn Speed

You can adjust the burning speed of CD/Audio CD/DVD/DVD DL/Blu-ray by this setting. The default setting of CD is 40x, Audio CD 24x, DVD 8x, DVD DL 2x and Blu-ray 2x.

- 1 Using / to select 5.Set Burn Speed and press .



```
5.Set Burn Speed
```

- 2 Pressing / to adjust the burning speed of CD and press  to confirm it, or press to select Audio CD,DVD, DVD DL or Blu-ray to adjust the burning speed.



```
[Burn Speed]  
CD = 40
```



6. Select Source

You can set any drive or built-in HDD in the duplicator to be your source reader.

- 1 Using / to select 6.Select Source.



```
6.Select Source
```

- 2 Press to check the current source reader, or select the proper drive to be the source reader by pressing /, once the source reader is selected, press to confirm the setting and back to the menu list.



```
Source: [D#01]  
==> [D#01]
```



**NOTE :**

The default setting of source reader is the first drive.

Chapter 3. Function Operation

7. Utility

7-1. Information

You can check the information of disc, drive and system by this function. By pressing , each disc or drive's information will show on the LCD.

- Using  to select 7.Utility, press  to enter the sub menu. Then, select 1.Information and press .

```
7.Utility
```

```
[Utility]  
1.Information
```

- Using  to select 1.Disc Info. or 2.Drive Info. or 3.System Info., and press  to see the related information.

- The information will show on the LCD as below:

- Disc Info. : You can check the format of disc, burning speed supported and total capacity. If the disc has data inside, you also can check the size of data.

```
[5]18,16,12,8,6  
Disc Format — DUD-RW 4489M — Burning Speed  
Capacity/Data size
```

- Drive Info. :

- HDD: you can press the button , to check your HDD Brand&Model name.

```
[HDD]P01.0 CC2H  
ST3166813AS
```

- Drive: The version, model No. and brand name can be checked here.

```
[#]Port 2.0 1.03  
Pioneer DVD RW — Drive version  
Brand name
```

Chapter 3. Function Operation

- System Info. : The model No. and firmware version can be checked here.

```
P507
V2.25.2      128MB
```

7-2. Erase Disc

This function will erase the rewritable discs in WRITER tray, there are two erase modes available:


- Quick Erase : It will erase the INDEX of the rewritable disc.
- Full Erase : It will erase ALL DATA in the rewritable disc, which takes longer time than Quick Erase.

1 Place discs into writers.

2 Using / to select 7.Utility and press  to enter the sub menu. Then, select 2.Erase and press .

```
7.Utility
```


```
[Utility]
2.Erase
```

3 Using / to select 1.Quick Erase. or 2.Full Erase.

```
[Erase Disc]
1.Quick Erase
```

OR

```
[Erase Disc]
2.Full Erase
```

4 Pressing  to execute the erasing task. When the system is detecting the discs, you will see the colon flashing.

The Second Drive —  _____

```
Quick Erase Disc
```

5 When the erase job is in process, you should see the O and o are blinking by turns.

Chapter 3. Function Operation

```
Quick Erase Disc
- 0 -----
```

- 6 Once the erase task has finished, the 0 stop blinking, the disc will be ejected automatically.

```
Quick Erase Disc
-----
```



NOTE :

- 1 If you see F and f are blinking by turns, which means the whole new DVD+RW is in format process.
- 2 Erase function only support rewritable discs.

7-3. PreScan Source

This function will scan and detect any bad sectors existing in the source disc, which helps you to ensure the readability of source disc.

- 1 Place a source disc into reader.
- 2 Using / to select 7.Utility and press to enter the sub menu. Then, select 3.Prescan Source and press to start scan task.

```
[Utility]
3.Prescan Source
```

- 3 When prescan task is in process, you can see the process on the display :

```
PreScan      4462M  Data size
Elapsed time  0:50  30% 1300M  Scanned data size
                |
                | Scan process %
```

- 4 When the prescan task has finished, the result of prescan will be shown on the LCD.

Chapter 3. Function Operation

```
PreScan    4462M  
PASS !
```

7-4. Track Edit

This function enables you to combine audio tracks from various CDs into a single customize audio CD.

- Copy Track: You can select and combine audio tracks from different CDs in this section.
- Close Disc: You have to perform this function after copy track to make the CD playable on CD player.
- Disc Info.: You can check the audio CD's status of usage.

7-5. Eject All Disc

You can eject all discs including source and target discs at the same time by this function.

7-6. Copy Counter

This function will record the result of duplication.

- Show Count: You can check how many discs copy successful and failed.
- Enable Counter: You can set the counter enable or disable to record the copy result.
- Clear Counter: You can delete the record by this function.

- 1 Using / to select 7.Utility and press  to enter the sub menu. Then, select 6.Copy Counter and press .

```
[Utility]  
6.Copy counter
```

- 2 Using / to select 1.Show Count.

```
[Copy count]  
1.Show Count
```

- 3 Pressing to check the calculation of successful and failed duplication for CD and DVD.

Chapter 3. Function Operation

	Q'ty of passed CD		
CD	P6	F0	Q'ty of failed CD
DVD	P12	P0	

7-7. Update BIOS

You can update the system's firmware in this function.

- 1 Place manufacturer certified update file CD into any drive.
- 2 Pressing / to select 7.Utility and sub menu 7.Update BIOS and then press to start the process.

```
[Utility]
7.Update BIOS
```

- 3 The system will detect the update file and execute update task automatically.

```
Update Firmware
                20%
```

- 4 Once the update job has done, the system will require you to reboot the system.

```
TURN OFF, WAIT 5
Second, TURN ON
```



NOTE :

Do NOT save the firmware in a folder. The system can not detect the file if you save it in a folder.

7-8. PRINT LS Label

This function will let you using the Lightscribe technology to print your own image on discs.

The operation process please refer to Appendix Lightscribe Operation.

Chapter 3. Function Operation

8. Setup

8-1. Auto Start Time

This setting will allow the system to do the Copy, Test, Compare and Copy + Compare functions automatically in a few seconds once the source and blank discs are placed in the trays and detected by the system. The default setting is 5 seconds. You can set a longer/shorter time from 1 to 99 seconds or set OFF to disable this function and execute copy task by manual.

- 1 Pressing / to select 8.Setup and sub menu 1.Auto Start Time.

```
[Setup]
1.Auto StartTime
```

- 2 Pressing / to set the time.

```
[Auto StartTime]
  5 seconds
```

8-2. Display Mode

You can select the preferred display mode in Copy, Test, Compare, Copy+Compare.

- Basic : It will only show the copy process (%) on LCD.

		Q'ty of target		
	1.Copy	x5	900M	Data size
Copy process %	77%		693M	Copied size

- Show Timer : It will show the time for copy.

	1.Copy	x5	900M	
Elapsed time	0:41	77%	693M	

- Show Speed : It will show the speed of burning during copy process.

Chapter 3. Function Operation

Speed of burning

1. Copy	x5	900M
16x	77%	693M

8-3. Button Beep

This setting will allow you to set up to hear a beep when a button is pressed or not.

8-4. Eject On Start

You can make the trays or discs eject once the system is booted up.

- Eject All Discs : To eject all trays with disc inside once the system is booted up.
- Do Not Eject : No eject any tray or disc once the system is booted up.
- Eject Target Only : Only eject target trays with disc inside once the system is booted up.
- Eject Source Only : Only eject source disc once the system is booted up.
- Eject All Trays : To eject all trays once the system is booted up.

8-5. Reader Speed

This setting allows you to adjust the reading speed of source drive. The default setting of reader speed of CD is 40x; DVD is 24x.

8-6. Compare Speed

The reading speed of drive and disc are the reasons can affect the quality of comparison. This setting allows you to adjust the reading speed of drives to match up the reading speed of discs. The default setting of CD's compare speed is 40x, DVD is 8x.

8-7. Language

You can set a proper language for interface during operation.

8-8. Clear Setup

This setting will reset all the function back to manufacturer's default setting.

8-9. Advanced Setup

- Power On Time : You can set a warm-up time from 5 to 99 seconds for warming up the duplicator when it is turned on. The default setting is 10 seconds.

Chapter 3. Function Operation

- Start-up Menu : You can select which function you would like to show up in the beginning.
- Skip Read Error : You can set this function enable to skip disc errors in order to avoid bad quality of copy. If you are confident of your source disc has only a small and insignificant error due to physical damages and can be overlooked, you can set NO to disable this function.

**NOTE :**

Skip Read Error can not fix the error in the source disc, all it does is skipping the errors and keeps copying the rest of readable data.

- Change Bad Master : This setting will make the system eject source disc and ask for another one while the source disc is unreadable for system.
- CD Overburn : The majority of discs have a small margin of extra groove at the outer edge. This setting allows you to copy data over the normal size limit.
- Show HDD Image Name : You can select to show HDD image name or capacity on Copy, Test, Copy + Compare and Compare function.

Show HDD Image Name:

```
1.Copy
Source:H(A001)
```

Show capacity:

```
1.Copy
Source:H(CD702)
```

**NOTE :**

When you change the source from drive to HDD, the LCD will show the HDD information. How to change your source reader please refer to 6.Select Source, page ??.

- Keep Buffer : You can set Yes to load source disc to buffer in first round of Copy, Test, Compare or Copy+Compare, and do it again without the source disc. Or you can set No to keep buffer not be used.

**NOTE :**

The source will be only temporary saved in buffer, there will be nothing left when you exit the task (Copy, Test, Compare and Copy+Compare or reboot the system).

- Boot Password : This setting allows you to enable or disable the user administrative password. Users have to login when the system is booted on.
- Setup Password : You can set up password by pressing (▲)/(▼) to select the number you like and press (OK) to set next number.
- Count Password : To set password for function 7-6 Copy Counter.
- Eject Tray if no disc : To set if users would like to eject tray when no disc is inserted.

Chapter 3. Function Operation

9. HDD Manager (For HDD-installed duplicator)

9-1. Select Image

You can select image file from HDD as your source for copy. When this function is selected, the system will set the HDD to be the source reader automatically.

- 1 Pressing / to select 9.HDD Manager and sub menu 1.Select Image.

```
[HDD Manager]
1.Select Image
```

- 2 Pressing / to select the image you need and press to confirm.

```
001[A001]
Audio CD      702M
```

Data size

9-2. Disc to Image

This function will load your source disc to the built-in HDD and save the source as an image file.

- 1 Placing the source disc to any one of the drives.
- 2 Pressing / to select 9.HDD Manager and sub menu 2.Disc to Image.

```
[HDD Manager]
1.CD => Image
```

- 3 Pressing to start loading.

```
DVD===>[A001]
50%          456MB
```

- 4 When loading has finished, the disc will be ejected automatically.

Chapter 3. Function Operation

```
DVD==>[A001]
Finished !
```



NOTE :

The source will be only temporary saved in buffer, there will be nothing left when you exit the task (Copy, Test, Compare and Copy+Compare or reboot the system).

9-3. Set Reader Speed

You can adjust the reading speed of the drive which you put the source disc. This function is ONLY available when you loading the source disc to HDD. The default setting of both CD and DVD speed are MAX.

9-4. Show Image Info.

You can check the disc format and data size of image file in this function.

- 1 Pressing / to select 9.HDD Manager and sub menu 4.Show Image Info.

```
[HDD Manager]
4.ShowImageInfo.
```

- 2 Press to check the disc format and data size of the image file. And you can press / to check other image file's information.

```
001 [A001]
AudioCD      702M
```

9-5. Rename Image

This function allows you to change the name of image file. You can set maximum up to 8 characters for a new name, and NO blank is allowed between the characters.

- 1 Pressing / to select 9.HDD Manager and sub menu 5.Rename Image.

Chapter 3. Function Operation

```
[HDD Manager]
5.Rename Image
```

- 2 Pressing **OK** and select which image file you would like to rename by pressing **▲/▼**, and then press **OK** to start edit a new name for the selected file.

```
Edit Image Name
[A002]
```

You can select characters or number by pressing **▲/▼**, and press **OK** to the next space to edit. The maximum is 8 characters without blank space. When it has done, press **OK** to confirm the new name.

9-6. Delete Image

You can delete image file from the built-in HDD, but the source image file is unable to delete if the file is selected as source. Therefore, before you delete an image file, please check if it is selected as a source and change a new one source by [9-1Select Image](#), page 20.



NOTE :

If there is an image file is deleted, the file name will be held for next new image file, the existing file will not to fill the vacancy. For example, there are 5 image files (A001~A005) in the HDD, when you delete A003, A004 will not change to be A003, once a new file has loaded, its default name will be A003.

9-7. Show HDD Info.

You can check the information of the built-in HDD includes how many discs are stored and the free space is available in the HDD.

```
Used: 1CD 3DVD
Free: 146CD 29DVD
```

9-8. Format HDD

This function allows you to format the built-in HDD while the HDD is NOT selected as reading source. You can change the source from HDD to other drive in [6.Select Source](#), page 11.

Chapter 3. Function Operation

Due to the capacity for discs loading is hard to predict precisely and more and more different discs coming out. The traditional method of format is not ideal for using on this duplicator. This duplicator is able to detect disc capacity and assign a proper partition for the disc's data automatically. You do not have to predict and select CD or DVD partition in the beginning and you can check how many discs you can upload from [9-7.Show HDD Info.](#), page 22 This intelligent HDD management technology is much easier for HDD management than the old way.

9-9. Load & Copy

This function is for the system to load the source to HDD and make copy synchronously. The system will load the source to HDD during the first round of duplication, and the HDD will replace the reader drive to be the source in second round of duplication. This special function is very convenient for a big copy task. You also can set:

- Load First : The system will load source to HDD first and take HDD as source to copy.
- Synchronous : The system will load the source to HDD and make copy at the same time.
- OFF : To disable Load & Copy function.



NOTE :

- ① The image file will only be saved temporary if it is loaded to HDD by Load & Copy function.
- ② If you would like to save the file permanently please load the file to HDD by manual.
(refer to [9-2.Disc to image](#), page 20)

Chapter 4. Specification

Model	P501D	P504D	P507U/W	P511U/W	P515X
Target	1	4	7	11	15
Buffer (DDR2)	64MB		128MB(U) / 512MB(W)		256MB
Interface	SATA				
CD Speed	52X				
DVD Speed	20X				
Blu-ray Speed	8X				
Writing Method	DAO, TAO, RAW				
Disc Format Support	BD-ROM, BD-R, BD-RE DVD-ROM, DVD-Video, DVD-Audio, DVD+R, DVD+RW, DVD-R, DVD-RW, Dual Layer DVD±R, CD-ROM, CD-RW, CD-I, Audio CD, Video CD, CD+G, CD-TEXT, Bootable CD, Mixed-mode CD, Multi-session CD, CD-Extra, Business Card CD, 3" Mini CD-R				
Display	2x16 Backlight Monochrome LCD				
Input	4 push buttons (Forward, Backward, OK, Esc)				
Language Support	English, Japanese, Chinese, Portuguese, Spanish				
Temperature	Working	5°C ~ 45°C			
	Storage	-20°C ~ 85°C			
Humidity	Working	20% ~ 80%			
	Storage	5% ~ 95%			
Controller Power Consumption	Voltage	5V±5%			
	Current	3A Max			
Safety	FCC, CE, RoHS				
Controller Weight (NW / GW) (g)	190 / 370	210 / 480	250 / 580	260 / 680	300 / 850

*: The above information is for marketing reference only. The actual specification may subject to change without notice.

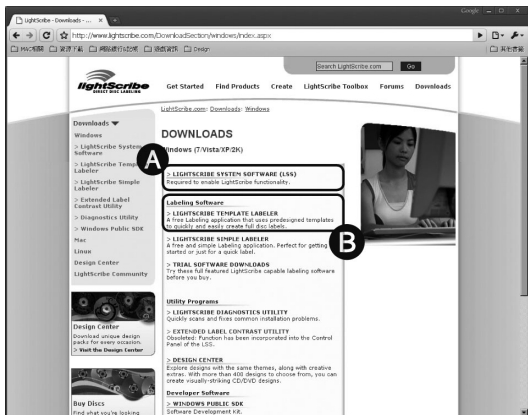
Lightscribe Operation

Step 1

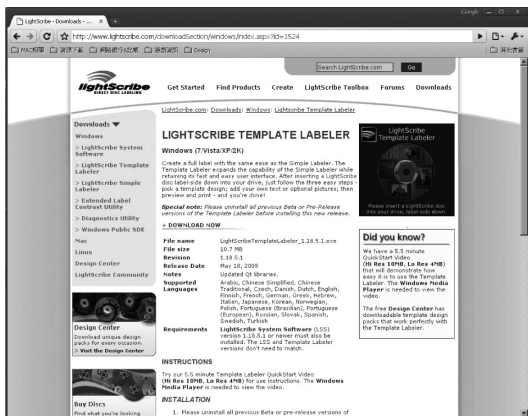
Install Lightscribe template software to PC

Download LightScribe software from www.lightscribe.com and install below software.

A. LIGHTSCRIBE SYSTEM SOFTWARE (LSS)



B. LIGHTSCRIBE TEMPLATE LABELER.

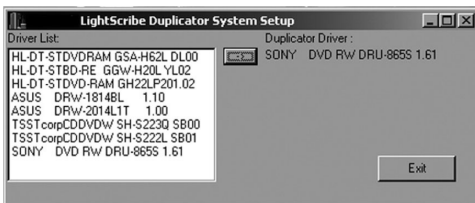


Chapter 5. Appendix

Step 2

Execute "LightScribe Drive select.exe".exe file to select LightScribe Drives.

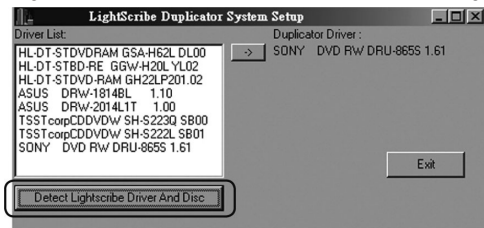
- 1 Receive a .exe file from your supplier.
- 2 Execute the .exe file on your PC.
- 3 And select the LightScribe Duplicator drive on the list.



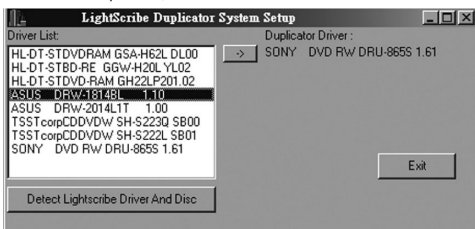
NOTE :

When everytime the Duplicator change LightScribe drive, must re-select drive before create LightScribe image for that Duplicator.

- 4 If the duplicator's Lightscribe drive is not on the list, please follow below steps to add new lightscribe drive to the support list.
 - 1 Plug the new lightscribe drive you will use for Duplicator to the PC.
 - 2 Click "Detect Lightscribe Drive And Disc " to search new available lightscribe drive.




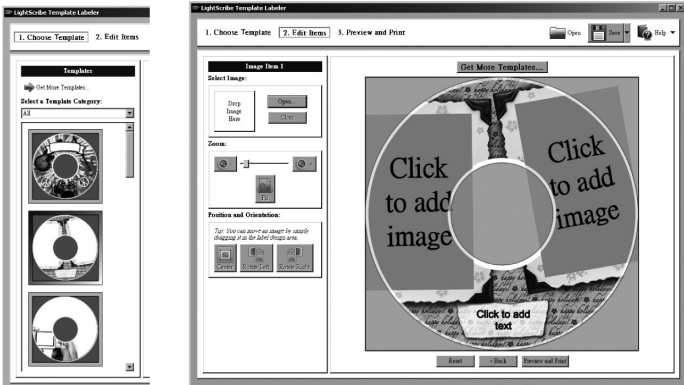
- 3 Select the new drive and press , the drive will be added to the list.



Step 3

Design Lightscribe Template and Lightscribe printing on PC.

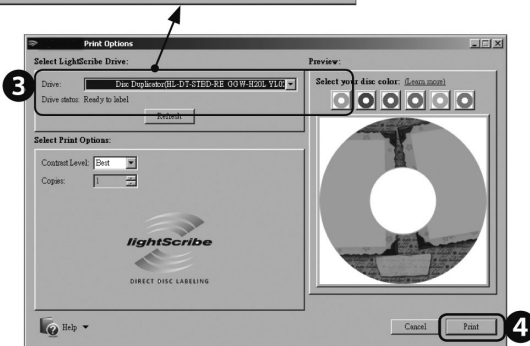
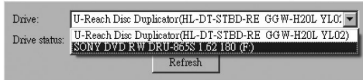
- 1 Click to launch the LightScribe Template  on our PC.
- 2 Follow procedure to create your label image.
- 3 Make sure the lightscribe drive is selected.



NOTE :

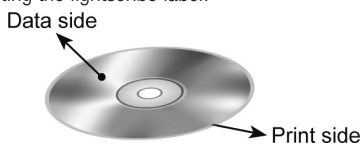
If Lightscribe template can not be executed normally under Window7, please try to click right button on the mouse on the Lightscribe icon and select " Run as administrator" to execute the function.

- 4 Click the Print to save the lightscribe image .LSI file to a USB stick or a Disc.



Chapter 5. Appendix

- 5 Plug the USB drive or Disc into Duplicator.
- 6 Select the utility function 7-8.PRINT LS Label. The system will read the image into the duplicator and start printing the lightscribe label.



NOTE :

When doing the lightscribe printing, please turn over the disc. The print side is face down and data side is face up.

Error Message

Error Message	Possible Reasons	Toubleshooting
Bad Master Disc	Master disc is empty or protected.	Please check your master disc by (1) Disc Info (2) by PC.
	Master disc has damaged or bad quality	
Warning: Can't DVD →CD	You put different format of blank disc from the master disc. Can not copy between different disc format	Please check your master and blank disc format by " Disc info". Only can copy CD to CD, DVD to DVD.
Not Blank Disc	The target disc has been written.	Please use blank disc or rewritable disc.
No Disc	No blank disc. Or the disc is upside down.	Please double check again your target disc.
	Using Blu-Ray blank disc, but the driver does not support Blu-Ray.	
No Master Disc	No source disc	Please check if you put the right source disc into the drive.
	Use Blu-Ray as a source, but the driver does not support Blu-Ray.	Please check the disc format by "Disc Info".
Read Error Count Over Limit <small>(happen when you load data from disc to HDD)</small>	Master disc has bad quantity.	Please change another source.
	Master disc is a protected disc	Please don't use protected disc as a source.
No update file	No disc with updated FW, can't find FW files	<ol style="list-style-type: none"> 1. Check if you unzip the FW file. 2. Check if the FW is placed at root level. 3. Check if you put the right disc with FW. 4. Try the FW disc with other drives.
HDD Full !	HDD has no enough space	Please release HDD space.
Wrong Password	Insert wrong password	Please double check again your password.

