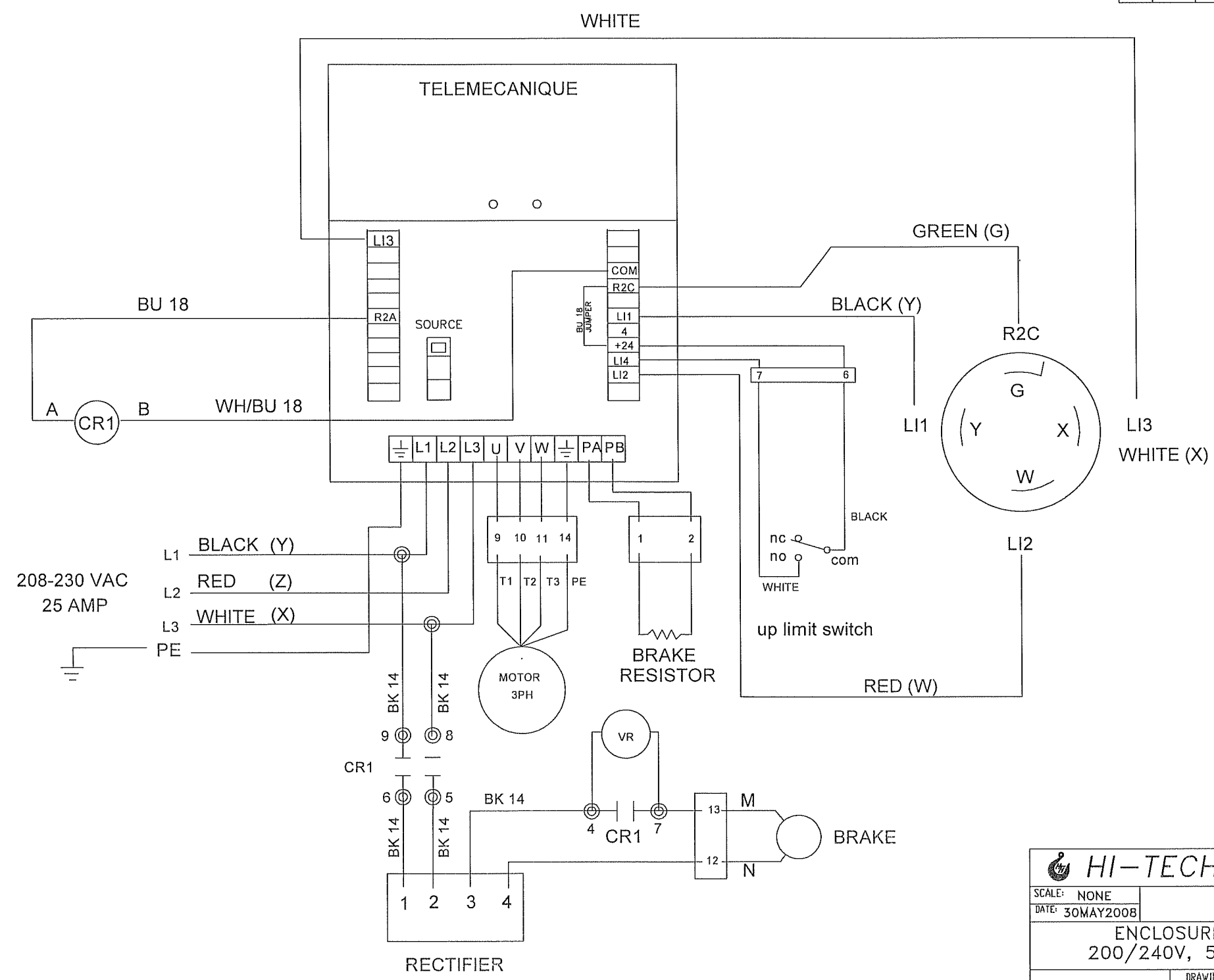


REV	ECO#	DATE	REVISION RECORD
A	XXX	MAY08	RELEASE TO PRODUCTION
B			

A14686

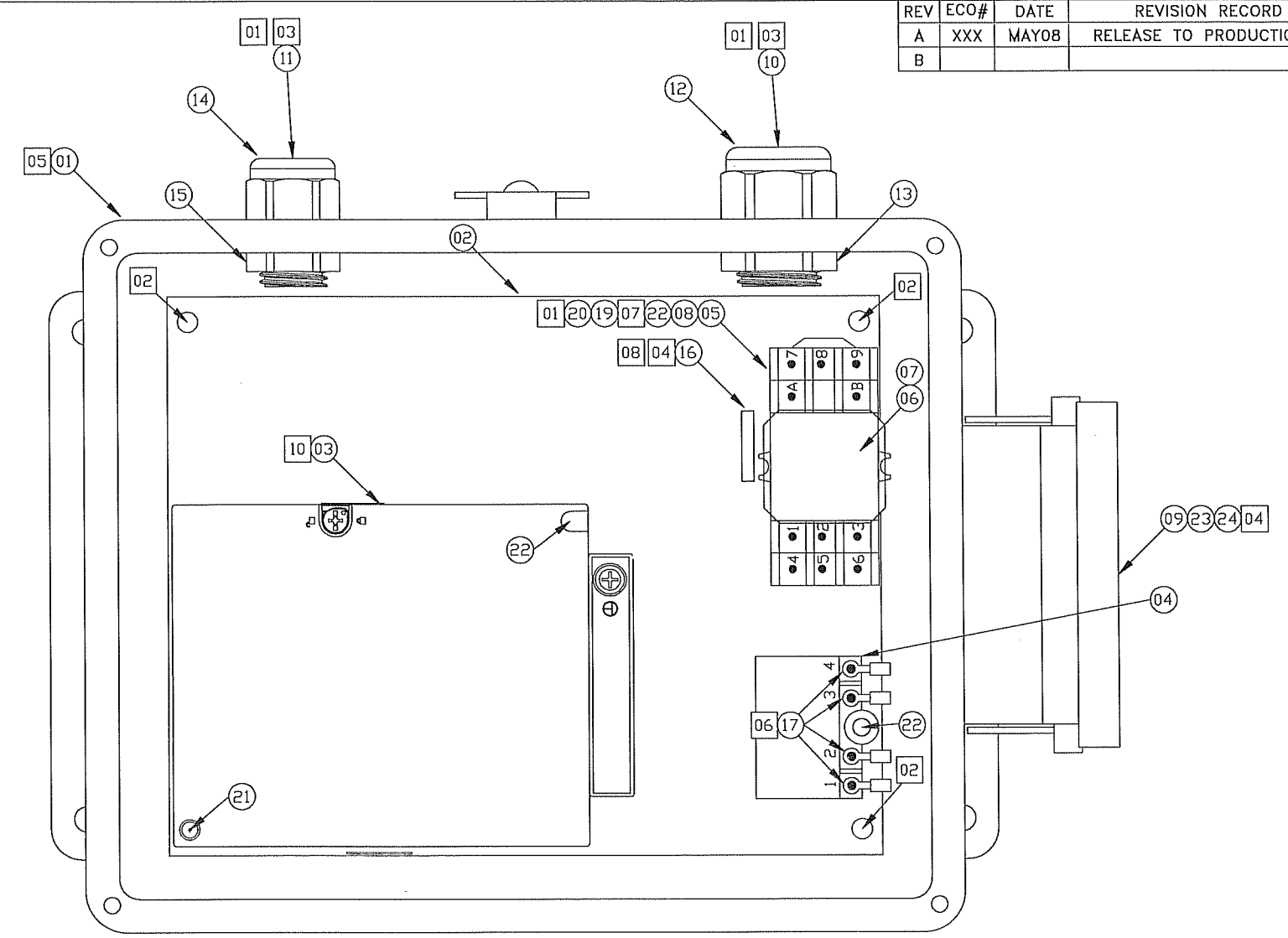
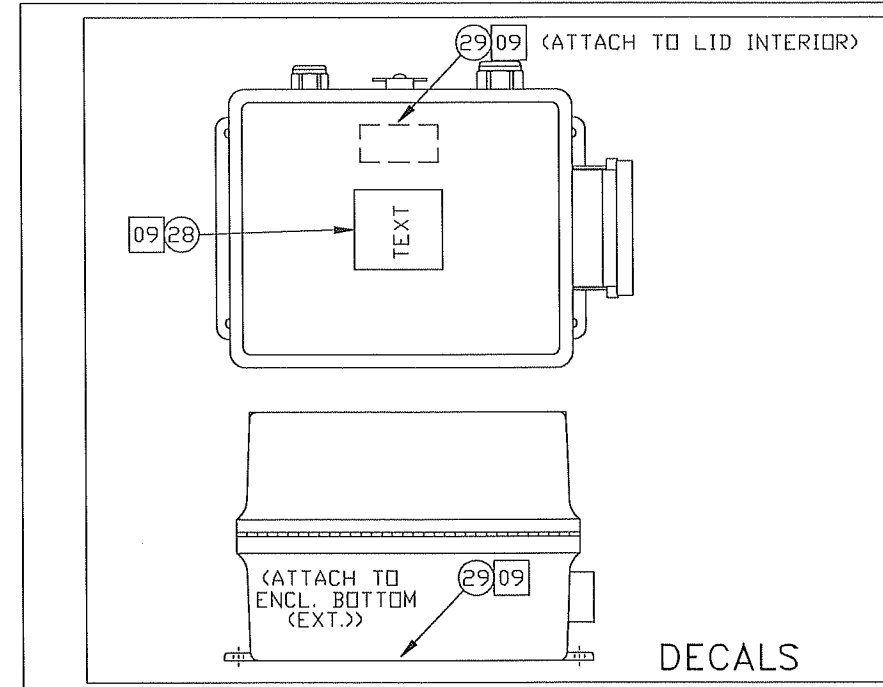


HI-TECH HOIST CORP.

SCALE: NONE	TOLERANCE NOT APPL	DRAWN BY: RJA
DATE: 30MAY2008		CHECKED BY:
ENCLOSURE ASSY, PATRIOT, 200/240V, 50/60HZ, 3PH, 3HP		
PAGE 2 OF 2	DRAWING NUMBER: A14686	REVISION A

REV	ECO#	DATE	REVISION RECORD
A	XXX	MAY08	RELEASE TO PRODUCTION
B			

A14686



ITEM	PART NO.	DESCRIPTION	QTY.
31	XXXXX	XXXXX	X
30	XXXXX	XXXXX	X
29	L145	LABEL, SERIAL NUMBER	2
28	L147	LABEL, POWER	1
27	XXXXX	XXXXX	X
26	XXXXX	XXXXX	X
25	XXXXX	XXXXX	X
24	C236	NUT, 8-32 NYLOCK	4
23	C2647	SCREW, 8-32X1 PHS	4
22	C2671	SCREW, 10-32X3/8 PHS	4
21	C2341	SCREW, 10-32X1/2 PHS	1
20	C259-BLU	WIRE, BU,18AWG	A/R
19	C259-WH/BU	WIRE, WH/BU,18AWG	A/R
18	C261-BK	WIRE, BK,14 AWG	AR
17	C243	EYELET TERMINAL, 14-12 AWG	4
16	A14702	VARISTOR ASSY	1
15	C391	LOCKNUT, 1/2 NPT	1
14	C1990	CORD GRIP, LT, 1/2 NPT	1
13	C1660	LOCKNUT, 3/4 NPT	1
12	C1989	CORD GRIP, LT, 3/4 NPT	1
11	B15216	CONNECTOR SUB-ASSY, PENDANT	1
10	B15217	CONNECTOR SUB-ASSY, POWER	1
09	A14699	CONNECTOR ASSY, 16 PIN F W/COVER	1
08	C289-1.5	DIN RAIL 1-1/2 INCH	1
07	C1786	RELAY CLIP	1
06	C1984	RELAY, 3P2T, OCT, 24VDC	1
05	C1985	RELAY BASE	1
04	CC056	BRAKE RECTIFIER	1
03	C1987	VF DRIVE, 3PH, 3HP	1
02	A14698	PLATE, 10X8, MODIFIED, PATRIOT	1
01	C2452	ENCL.,NEMA4,10X8,FAT BOY, MODIFIED	1

BILL OF MATERIALS

- [11] COMPLETE QC TESTING AND AFFIX QC STAMPS
- [10] PROGRAM DRIVE WITH HIGHEST LEVEL PROGRAM 3PH PATRIOT
- [09] ATTACH LABELS AS INDICATED ON INSET
- [08] VERIFY VARISTER LEADS DO NOT CONTACT OTHER COMPONENTS
- [07] SECURE DIN RAIL TO PLATE WITH HARDWARE BEFORE INSTALLING RELAY BASE
- [06] ATTACH TERMINALS TO WIRE BEFORE SECURING TO RECTIFIER
- [05] ITEM SHOWN WITHOUT LID IN THIS VIEW
- [04] WIRE TO WIRING DIAGRAM (SHEET 2)
- [03] INSERT PIGTAIL ASSY THROUGH STRAIN RELIEF
- [02] SECURES WITH HARDWARE SUPPLIED WITH ITEM#1
- [01] ITEM NOT SHOWN, WIRE TO WIRING DIAGRAM (SHEET 2)

NOTES

HI-TECH HOIST CORP.		
SCALE: NONE	TOLERANCE NOT APPL	DRAWN BY: RJA
DATE: 30MAY2008		CHECKED BY:
ENCLOSURE ASSY, PATRIOT, 200/240V, 50/60HZ, 3PH, 3HP		
PAGE 1 OF 2	DRAWING NUMBER: A14686	REVISION A