



Instructions for Injecting tcs® Unbreakable Cartridges Using the Success Unit by Dentsply

Always wear protective gloves, clothing and eye protection when injecting.

1. The Success Unit includes 2 pistons.
To properly inject a tcs® Unbreakable Cartridge you will need the smaller of the 2 (see Figure 1a).
The piston fits inside the opening where the cartridge is crimped (see Figure 1b and 1c).



Fig. 1a

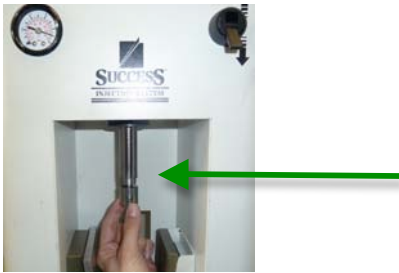


Fig. 1b



Fig. 1c

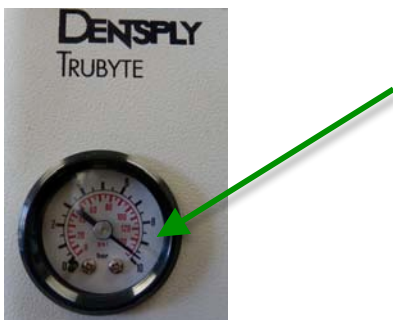
2. If necessary change the piston on the Success Unit to the smaller unit.



3. Set the furnace to 550°F.



4. Recommended Air Pressure is between 135-140 psi. However, Air Pressure can be set as low as 105 psi if necessary.



* Success is a Dentsply Trademark

- The Melting Cylinder needs to be in the furnace so that it is heating up with the furnace (see Figure 5a).

If you put the cartridge into a cold Melting Cylinder and then put it into the furnace, you may experience short castings. Once the furnace has reached 550°F and maintained the temperature for approx. 5-10 minutes, insert a tcs® Unbreakable Cartridge Protruded Tab first (see Figure 5b and 5c) into the melting cylinder. **Immediately** set a timer for 11 minutes. Notice that you can see the labeled end of the cartridge if you look into the chamber (see Figure 5d).



Fig. 5a

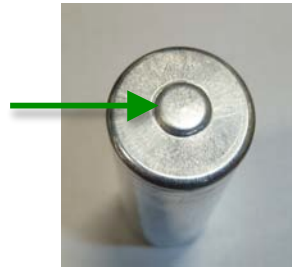


Fig. 5b



Fig. 5c



Fig. 5d

- Place flask in position for injection; be sure that the piston is up (see Figure 6a). Be sure that the apparatus is in place (Figure 6b).



Fig. 6a

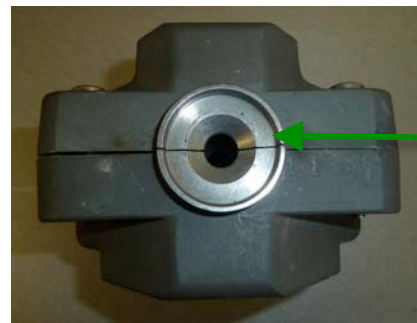


Fig. 6b

- Once the timer goes off at 11 minutes, **immediately and carefully** transfer the melting cylinder from the furnace to the injection unit.

Make sure the tube is centered perfectly so the piston will not hit the walls of the tube. Inject.



Important notice WHEN using TCS Large Cartridges

TCS Large Cartridges ARE SLIGHTLY TOO LONG TO fit when flask is in position for injection. For effective injection, once the timer goes off at 11 minutes, immediately slide the flask out towards you about 2 inches and transfer the melting cylinder from the furnace to the injection unit, then slide the flask with cylinder back to position for injection.

- After 2-3 minutes under pressure, release the injection.

- Continue with Finish and Polish.

** Finish and Polish video available online:
www.tcsdentalinc.com*

Technical Support: 866-426-2970

TCS, Inc. | 2619 Lime Ave. | Signal Hill | CA | 90755

866-426-2970

www.tcsdentalinc.com
www.facebook.com/tcsdental



* Success is a Dentsply Trademark