

2021 Collection



Stage Lighting | Trussing | Professional Audio | Rigging | Staging



About

Here at CedarsLink, World Class Customer Service and Unparalleled Production Standards are not just slogans for marketing gimmicks, they are an industry standard; an experience that we want our trusted clients and first time buyers to acknowledge as second nature when considering our brand.

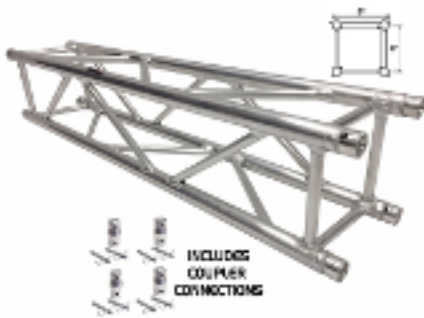
Becoming the Fastest Expanding Brand the industry was an overnight success that took over 35 years of being in the industry first hand. Unsatisfied with other brand offerings and prices, CedarsLink was conceived in 2011, and we have not stopped striving for perfection day in and day out since. Find our products here, in every major E-Commerce retailer, or at any one of our Factory Authorized Dealers.



11.42" x 11.42" Spigot Truss

- Outer diameter tube: 2" (50mm.)
- Dimensions: 290mm.x290mm.
- Diagonal bracing diameter: 0.75" (25mm.)
- Proudly manufactured from high-strength corrosion resistant 6082 T-6 aluminum
- 2mm wall thickness

MODELS	DESCRIPTION
LK-0.29	0.95FT / 0.29M Square Aluminum Truss Section
LK-0.5	1.64FT / 0.50M Square Aluminum Truss Section
LK-0.75	2.46FT / 0.75M Square Aluminum Truss Section
LK-0.87	2.85FT / 0.87M Square Aluminum Truss Section
LK-1	3.28FT / 1.00M Square Aluminum Truss Section
LK-1.25	4.10FT / 1.25M Square Aluminum Truss Section
LK-1.5	4.92FT / 1.50M Square Aluminum Truss Section
LK-2.0	6.56FT / 2.00M Square Aluminum Truss Section
LK-2.5	8.20FT / 2.50M Square Aluminum Truss Section
LK-3	9.84FT / 3.00M Square Aluminum Truss Section



8" x 8" Spigot Truss

- Outer diameter tube: 1.25"
- Dimensions: 8" x 8"
- Proudly manufactured from high-strength corrosion resistant 6082 T-6 aluminum
- 2mm wall thickness

MODELS	DESCRIPTION
LK-ST1	3.28FT / 1.00M Square Aluminum Truss Section
LK-ST1.5	4.92FT / 1.50M Square Aluminum Truss Section
LK-ST2	6.56FT / 2.00M Square Aluminum Truss Section



Aluminum 8"x 8" Bolt Type Truss

- Connect trussing together effortlessly with no hammers and with industrial grade strength
- Outer diameter tube: 1.25"
- Dimensions: 8" x 8"
- Proudly manufactured from high-strength corrosion resistant 6082 T-6 aluminum
- 2mm wall thickness

MODELS	DESCRIPTION
LK-STA.5	1.64FT / 0.50M Square Aluminum Bolt Truss Section
LK-STA1	3.28FT / 1.00M Square Aluminum Bolt Truss Section
LK-STA1.5	4.92FT / 1.50M Square Aluminum Bolt Truss Section
LK-STA2	6.56FT / 2.00M Square Aluminum Bolt Truss Section



8" x 8" Black Bolt Truss Sections

- Black square 8"x8" truss section
- Heavy duty metal build
- Connects to other trusses in seconds with the included connection bolts
- Fixtures and trusses can connect to each direction of the truss

MODELS	DESCRIPTION
LK-2030	1.00FT / 0.30M Square Metal Bolt Truss Section
LK-2040	1.33FT / 0.40M Square Metal Bolt Truss Section
LK-2050	1.66FT / 0.50M Square Metal Bolt Truss Section
LK-2060	1.97FT / 0.60M Square Metal Bolt Truss Section
LK-2080	2.66FT / 0.80M Square Metal Bolt Truss Section
LK-20100	3.28FT / 1.00M Square Metal Bolt Truss Section
LK-20150	4.92FT / 1.50M Square Metal Bolt Truss Section
LK-20200	6.56FT / 2.00M Square Metal Bolt Truss Section
LK-20200	8.20FT / 2.00M Square Metal Bolt Truss Section

10"x 10" Triangle Truss Sections



- Outer diameter tube: 1.5" (38mm.)
- Proudly manufactured from high-strength metal with black paint finish
- Connect trussing together effortlessly with no hammers and using connection bolts.

MODELS	DESCRIPTION
LK-0.25	0.82FT / 0.25M Triangle Truss Section
LK-EXTTA	1.64FT / 0.50M Triangle Truss Section
LK-L3FA	3.28FT/1.00M Triangle Truss Section
LK-L5FA	4.92FT/1.50M Triangle Truss Section
LK-ARCH1	6.56FT/2.00M Triangle Truss Section

6"x 6" Triangle Truss Sections



- Outer diameter tube: 1.5" (38mm.)
- Proudly manufactured from high-strength metal with black paint finish

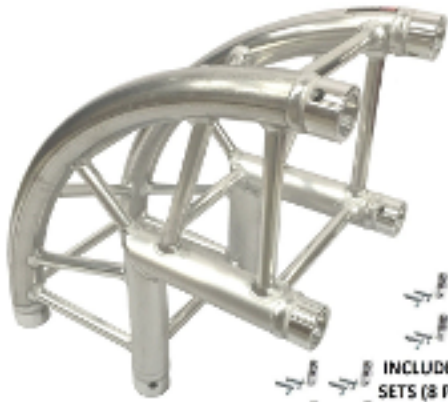
MODELS	DESCRIPTION
ARCH-SAT1B	3.28FT / 1M Triangle Truss Section
ARCH-SAT1A	3.28FT / 1M Triangle Truss Section

Kuzinsky Bolt Truss



- Ultra heavy duty, industrial grade T-6082 aluminum
- 300mm. x 300mm (11.81" x 11.81") width
- 2" diameter tubing
- 3mm tube wall thickness (more thick than other brands)
- Sleek black powder coated finish

MODELS	DESCRIPTION
LK-3030.1	3.28ft / 1 Meter Bolt Heavy Duty Aluminum Truss
LK-3030.2	6.56ft / 2 Meter Bolt Heavy Duty Aluminum Truss



11.42"x 11.42" Width Truss Cubes/Corners

- Ultra heavy duty, industrial grade T-6082 aluminum
- 300mm. x 300mm (11.81" x 11.81") width
- 2" diameter tubing
- 3mm tube wall thickness (more thick than other brands)
- Sleek black powder coated finish

MODELS	DESCRIPTION
LK-C2	1.64FT 2-Way 90 Degree Corner
LK-ROUND 2	1.64FT 2-Way Rounded 90 Degree Corner
LK-CORNER 3	1.64FT 3-Way 90 Degree Corner
LK-2040	1.64FT 2-Way 90 Degree Corner Square Trussing Section



8"x 8" Truss Cube/Corner

- 2-way corner piece for 8"x8" square aluminum truss segments with 1.25" diameter tubing
- Adds 19" to height and width
- Includes one set of four coupler connections
- Compatible with all Cedarslink 8"x8" aluminum trussing

MODELS	DESCRIPTION
LK-CSTA	90 degree, 19" Aluminum Corner for Square Spigot Trussing with 1.25" Tubing



6"x 6" Triangle Truss Corners

- Pair (2) of Cedarslink 6" triangle truss corners
- Works only with Cedarslink mini 6" triangle trussing
- Sleek black finish
- Includes 6 connecting bolts
- Unit weight: 1.85 LB. each corner

MODELS	DESCRIPTION
ARCH-SBT1	(2) Two Black Metal Corners Mini 6" Bolted Triangle Trusses DJ Lighting Arch



8"x 8" Black Bolt Corners

- Ultra heavy duty, industrial grade T-6082 aluminum
- 300mm. x 300mm (11.81" x 11.81") width
- 2" diameter tubing
- 3mm tube wall thickness (more thick than other brands)
- Sleek black powder coated finish

MODELS	DESCRIPTION
LK-HIG20	Variable Angle Adjustment Square Black Bolt Corner for 8"x8" Truss
LK-C1	90 Degrees, 20" Square Black Bolt Corner For 8"x8" Truss
LK-C1.5	90 Degrees, 29" Square Black Bolt Corner For 8"x8" Truss



10"x 10" Triangle Truss Corners

- 3-way triangle truss corner
- Compatible with all CedarsLink triangle trusses
- 6" distance between each mounting hole
- Adds 1.2 ft. to each direction
- 1.5" diameter tubing
- 10" overall truss width

MODELS	DESCRIPTION
TTB-90	3 Way Triangle Truss Corner Black Metal DJ Lighting PA Trussing
EXT-10	3 Way Triangle Truss T Adapter Black Metal DJ Lighting PA Trussing Bolted
ARCH1	Pair (2) Two Black Metal Corners For Bolted Triangle Trusses DJ Lighting Arch



19" Bolt Corner For 8"X8" Truss

- 2-way corner piece for 8"x8" square aluminum bolt truss segments with 1.25" diameter tubing
- Adds 19" to height and width
- Includes connection bolts
- Compatible with all Cedarslink 8"x8" bolted aluminum trussing
- Unit weight: 7 LB.

MODELS	DESCRIPTION
LK-CSTAB	90 degree, 19" Aluminum Corner for Square Bolt Style Truss with 1.25" Tubing



12"x12" Cubes

- Industrial grade 6-way junction cube
 - 2" diameter tubing
 - 3/4" bracing
 - 19 LB. unit weight
 - Includes 12 easy to use and relocate couplers, pins and clips
 - Fits all major name brand trussing
-



8"x8" truss cubes

- CedarsLink industrial grade LK-SATC6 6-way connection cube corner block for CedarsLink LK-SAT trusses
 - Compatible with LK-SAT truss sections by CedarsLink that utilize 1.25" diameter tubing and 8" overall truss width
 - Perfect for making corners in small areas
 - Includes 12 removable half couplers with pins and clips that you can easily mount on any side of the block
 - Unit weight: 6 LB.
-



10"x10" cubes triangle

- The 5-way triangle truss cube by CedarsLink is your solution for connecting multiple triangle or linear truss sections of any length together and in multiple directions
 - This cube works with truss sections that have a 6" distance between mounting holes
 - Heavy-duty industrial strength metal build
 - Sleek black, low profile design
 - Lightweight and compact
 - Dimensions: 10.5"x10.5"x9"Unit weight: 6 LB.
-



TRIO 5 Sided Triangle Truss Angle Black Corner

- 5-way triangle truss angle connection
 - Angle your triangle truss sections in 5 different directions
 - Compatible with all CedarsLink triangle trusses and other brands utilizing 6" distance between mounting holes
 - Includes rubber safety covers over each bolt to be utilized when not in use
-



8"x8" bolt type cubes aluminum

- Aluminum 6-way connecting cube for LK-STA style Cedarslink bolted truss
- Includes connection bolts
- Unit weight: 3 LB.

8"x8" Black Bolt Cubes



- Truss triangle corner block for Cedarslink black bolt square trussing with 8" diameter
 - allows trusses to face different angles
 - 3-way connections
 - Includes connection bolts
 - Unit weight: 3.5 LB.
-

8"x 8" Black Bolt Cubes 70-Degree



- Truss triangle corner block for Cedarslink black bolt square trussing with 8" diameter
 - allows trusses to face different angles
 - 3-way connections
 - Includes connection bolts
 - Unit weight: 3.5 LB.
-

8"x 8" Black Bolt Cubes 90 Degree



- Truss cube corner block for Cedarslink black bolt square trussing with 8" diameter
 - 90 degree angle, perfect square cube
 - 6-way connections
 - Includes connection bolts
 - Unit weight: 3.5 LB.
-

LK-TOP-4 Truss Topper and Portable Floor Stand for Totem System



- Compatible with all major name brand 290mm. x 290mm. (12"x12") type trussing
 - 8" total height
 - 2" tube diameter
 - Unit weight: 6 LB.
 - Includes four half couplers with pins and clips
-

LK-1213 12"x13" Base Plate/ Top For Square or Triangle Trussing



- 12"x13" base/top plate for standard sized 290mm.x290mm. square aluminum trussing with 2" diameter tubing
- Includes four half couplers with pins and clips to attach truss to base
- Incredibly heavy-duty industrial strength to withstand even the most demanding situations
- Sturdier/thicker base than other brands!
- Rounded edges to avoid injury

LK-2020 20"x20" Base Plate For Square, Triangle, or Linear Lighting Truss



- This base allows you to mount your 290mm.x290mm., CedarsLink triangle truss, or linear truss upright
- The strong and sturdy metal build keep your truss section upright in the most demanding situations
- Includes four half couplers for attaching your square aluminum truss with 2" diameter tubing
- Six convenient carrying handles on surface
- Rounded edges to avoid injury
- Unit weight: 23 LB.

LK-5050 Black 20"x20" Base Plate For Square, Triangle, or Linear Lighting Truss



- This base allows you to mount your CedarsLink triangle truss, 290mm.x290mm. square aluminum truss or linear truss upright
- Sleek black finish
- The strong and sturdy metal build keep your truss section upright in the most demanding situations
- Convenient carrying handles on surface
- Rounded edges to avoid injury
- Unit weight: 20 LB.

LK-2626SA 26"x26" Base Plate For Square Aluminum Lighting Truss



- Mount your 290mm.x290mm. (11.42"x11.42") aluminum square truss on the center or on either side of the base
- Perfect for front heavy applications such as TV plasma mounts
- Fits triangle trusses with 6" distances between mounting holes
- Includes four half couplers with clips and pins
- Six convenient carrying handles on the surface
- Rounded edges to avoid injury
- Unit weight: 38 LB.

LK-1339 13"x39" Aluminum Base Plate Square Triangle Linear



- 13"x39" Aluminum base for trussing
- 10mm. thickness
- Perfect for all applications
- Strong, sturdy and reliable support
- Rounded edges to avoid injury
- Mount your square aluminum trusses or triangle trusses in the center or on either side of the base
- Includes 4 half couplers with pins and clips to mount aluminum trusses

LK-1339B Black 13"x39" Base Plate Square Triangle Linear Lighting Truss



- 13"x39" base for trussing
- Sleek black finish
- Perfect for all applications
- Strong, sturdy and reliable support
- Rounded edges to avoid injury
- Mount your square aluminum trusses or triangle trusses in the center or on either side of the base
- Includes 4 half couplers with pins and clips to mount aluminum trusses with 2" diameter tubing
- Unit weight: 33 LB.with 2" diameter tubing
- Unit weight: 22 LB.
- Compatible with all major name brandsUnit weight: 38 LB.

P-2639 26"x39" Aluminum Rectangle Base/Top Plate Box Trussing Light Columns



- Compatible with all major name brands
- Includes four half couplers (as pictured)
- 26"x39" footprint
- Ultra thick 8.3mm. aluminum
- Rounded corners to avoid injury
- 6 convenient built in carrying handles
- Unit weight: only 31.5 LB.Compatible with all major name brandsUnit weight: 38 LB.

Industrial Strength Heavy Duty Rolling Truss Base+Four 68" Outrigger Support Bar



- Industrial strength, all heavy duty metal design
- 35"x35" base
- Includes four detachable arms for securely mounting base on any surface
- Total of 8 surface mounting points on ground
- 2.5" diameter tubing on base
- All locking systems are strong and reliable
- Unit weight: 140 LB.

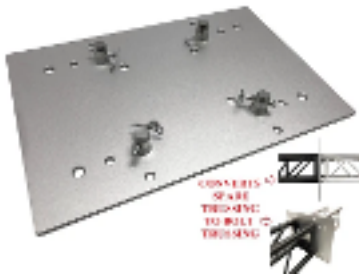


12"x12" Base Plate/Top For 290mm x 290mm Trussing/Converts Spade Truss to Bolt Trussing



- Heavy duty, solid aluminum build!
 - Serves as a base/top plate for spade type trussing (290mm x 290mm)
 - 12" x 12" plate size
 - Includes 4 couplers, pins, and clips
 - Ultra thick 10.60mm thickness
 - 7 LB. unit weight with 2" diameter tubing
 - Unit weight: 22 LB.
 - Compatible with all major name brands Unit weight: 38 LB.
-

23.75"x15.75" Base Plate/Top For F34 Trussing/Converts Spade Truss to Bolt Truss



- Heavy duty, solid aluminum build!
 - Serves as a base/top plate for F34 type trussing (290mm x 290mm)
 - 23.75" x 15.75" plate size
 - Includes 4 couplers, pins, and clips
 - Ultra thick 10.60mm thickness
 - 16.60 LB. unit weight
-

LK-SAT 12"x12" Aluminum Base Plate/ Top For Square Trussing Fits 8"x8" Truss LK-SAT



- 12" x 12" base/top plate for 8"x8" square box aluminum truss sections with 1.25" diameter tubing (LK-SAT models)
- Includes 4 half couplers on the base along with 4 pins and clips to mount square truss
- Incredibly heavy-duty industrial strength aluminum to withstand the most demanding events and all weather
- Hole in center of base to attach a pole for mounting speaker monitors
- Larger/sturdier/thicker base than other brands! (6mm. thickness)
- Rounded edges to avoid injury and damage (compare to other brands)
- Unit weight: 3.40 LB. 16.60 LB. unit weight

12"X12" Aluminum Base Plate/ Top For Square Trussing Fits 8"x8" Truss LK-SAT



- 12" x 12" base/top plate for 8"x8" square box aluminum truss sections with 1.25" diameter tubing (LK-SAT models)
- Includes 4 half couplers on the base along with 4 pins and clips to mount square truss
- Incredibly heavy-duty industrial strength aluminum to withstand the most demanding events and all weather
- Hole in center of base to attach a pole for mounting speaker monitors
- Larger/sturdier/thicker base than other brands! (6mm. thickness)
- Rounded edges to avoid injury and damage (compare to other brands)
- Unit weight: 3.40 LB.

20"X20" Aluminum Base Plate/ Top For Square Trussing Fits 8"x8" Truss LK-SAT

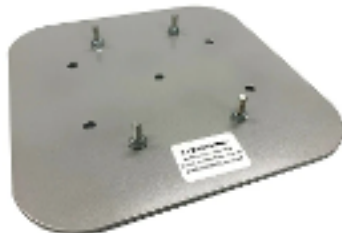


- 20" x 20" base/top plate for 8"x8" square box aluminum truss sections with 1.25" diameter tubing (LK-SAT models)
- Includes 4 half couplers on the base along with 4 pins and clips to mount square truss
- Incredibly heavy-duty industrial strength aluminum to withstand the most demanding events and all weather
- Larger/sturdier/thicker base than other brands! (6mm. thickness)
- Rounded edges to avoid injury and damage (compare to other brands)
- Unit weight: 9 LB.

12"X12" Aluminum Base Plate/Top For Bolt Style LK-STA Cedarslink 8"x8" Trussing

- 12"x12" aluminum base plate for Cedarslink LK-STA bolt type trussing
- Includes connection bolts
- Unit weight: 3 LB.

Compatible Products:



- 3.28 FT. Truss
- 4.92 FT. Truss
- 6.56 FT Truss
- 12" x 12" Base Plate
- 20" x 20" Base Plate
- 11" x 39" Base Plate
- Truss Cube
- Truss Clamps
- Truss Corner
- Speaker Mount

20"X20" Aluminum Base Plate/Top For Bolt Style LK-STA Cedarslink 8"x8" Trussing

- 20"x20" aluminum base plate for Cedarslink LK-STA bolt type trussing
- Includes connection bolts
- Unit weight: 9 LB.



Compatible Products:

- 3.28 FT. Truss
 - 4.92 FT. Truss
 - 6.56 FT Truss
 - 12" x 12" Base Plate
 - 20" x 20" Base Plate
 - 11" x 39" Base Plate
 - Truss Cube
 - Truss Clamps
 - Truss Corner
 - Speaker Mount
-

11"X39" Aluminum Base Plate/Top For Bolt Style LK-STA Cedarslink 8"x8" Trussing

- 11"x39" aluminum base plate for Cedarslink LK-STA bolt type trussing
- Includes connection bolts
- Unit weight: 10 LB.



Compatible Products:

- 3.28 FT. Truss
- 4.92 FT. Truss
- 6.56 FT Truss
- 12" x 12" Base Plate
- 20" x 20" Base Plate
- 11" x 39" Base Plate
- Truss Cube
- Truss Clamps
- Truss Corner
- Speaker Mount

12"x12" Black Aluminum Base Plate/Top For 10"x10" Cedarslink Triangle trussing



- 12"x12" black aluminum base plate for 10"x10" Cedarslink triangle trussing
- Includes 3 bolt connections with tool
- Heavy-duty aluminum build
- Unit weight: 2.7 LB.

Pair (2) Two Black 13"x39" Metal Base For Bolted Triangle Trusses



- This package includes two (2) 13'x39" triangle truss bases and six (6) bolts with nuts for attaching your triangle truss
- Designed to be used only with bolted truss sections with a 6" distance between mounting holes
- Perfect for creating a totem or arch truss system
- Heavy duty metal, sturdy rugged design
- 8 rubber non-slip grip soles along bottom of base
- Unit weight: 33 LB. each

LK-C14 14FT TRUSS LIGHTING CRANK STAND 220 LBs & UNIVERSAL T ADAPTER DJ PA CLUB



- You will be able to mount and raise your truss fixtures by cranking to 14 ft. high
- Includes universal truss adapter to hold square or triangle trussing
- One of the legs has an adjustable length for angle mounting
- High quality, heavy duty industrial grade strength design
- Max vertical load: 220 LB.
- Base diameter: 63"

(2) LK-T15 DJ Pro Lighting 10 Foot Crank Light Stand & (2) Square Truss T-Bar Adapter

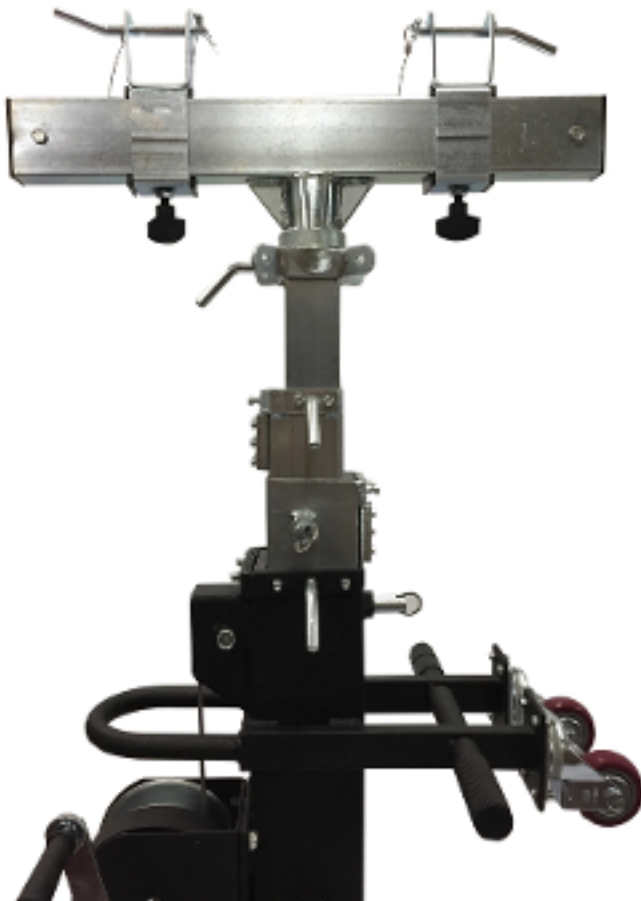


- Max height: 11 ft. 6 in.
- Tubing leg: 1 3/8" (35mm.)
- Load capacity: 165 LB.
- Heavy duty industrial grade metal
- Perfect for mobile use
- Extremely durable

Truss adapter features:

- Square or triangle truss lighting stand adapter
- 40mm. support bar/truss
- Works with any crank or fixed tripod stand with 35mm.-40mm. pole
- Overall length: 17"
- Latches slide from 4.5"-15" (on latch center) and lock into place
- Safety cotter pin ensures the pin will not slide out

Colossus 18 FT. Heavy Duty Crank Up Lighting Stand With Outriggers



- 18 ft. maximum height
- Extra heavy duty design, top truss adapter piece has added support to compensate for extra heavy weight
- Three separate double locking height adjustment levels so that strain is not place on one lock
- Entire unit can be rolled vertical or on it's side for transport
- 86" total width when outriggers are open
- Built in bubble level on shaft
- 18"x18" base
- 80" height when fully depressed
- Heavy duty locking casters
- Unit weight: 227 LB.

(2) 8.20 Ft. Height Ground Support Truss Lifting Tower Roof System Outriggers



Includes Flexible
Hinge Couplers

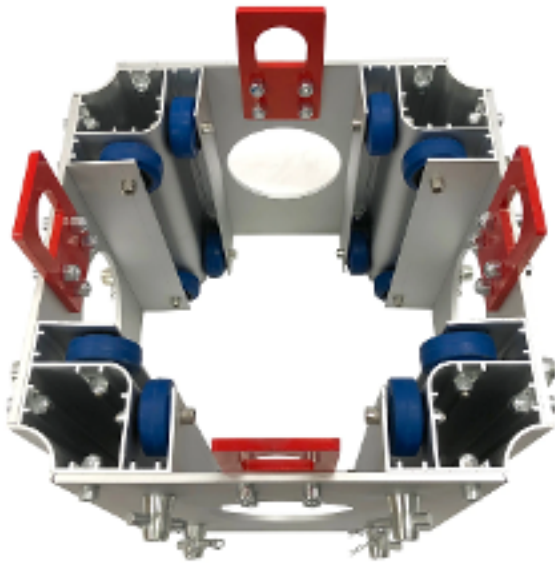


**Truss Roofing System - Includes Everything You
Need to Create Two 8.20 Ft. Trussing Roofing
Systems**

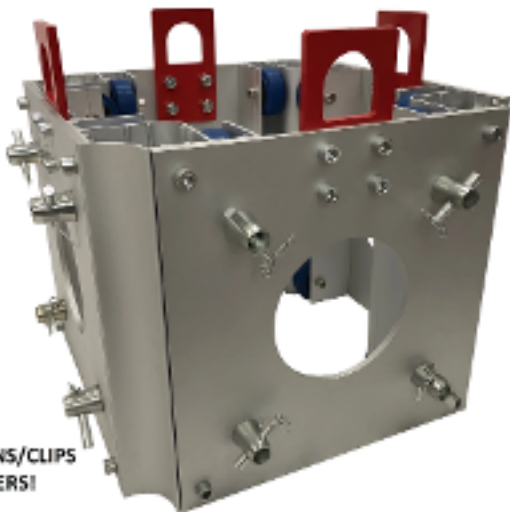
Each System Includes:

- Rigger base with casters and four 46" extending arms
- 6.56 ft. (2 meter) aluminum truss
- 1.64 ft. (0.5 meter) aluminum truss
- Four vertical support arms that telescope 35"-65"
- Sleeve block junction box
- Truss top ground support with chain pulley wheels
- 1 Ton Chain hoist with chain bag for up to 26 ft. of total height
- 2 flexible hinge couplers to attach trusses together

LK-P16 12" Square Box Truss Ground Support Sleeve Block



- Sleeve/4 way corner truss block for square aluminum truss sections with a 290mm. x 290mm. fitment (12"x12")
- Perfect for attaching to all hoist applications where your truss structure needs to be completely raised or lowered
- Includes 12 half couplers+pins/clips to easily attach trusses
- Rugged, industrial grade aluminum build
- Dimensions: 19.5" x 19.5" x 16" Height.
- Unit weight: 72 LB.18"x18" base
- 80" height when fully depressed
- Heavy duty locking casters
- Unit weight: 227 LB.



INCLUDES 12 PINS/CLIPS
FOR COUPLERS!

