

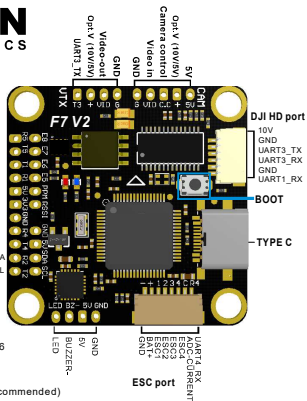


AIKON F7 V2

- UART5_RX ESC8
- UART5_TX ESC7
- UART1_RX ESC5
- 5V PPM
- 3.3V RSSI
- GND
- UART4_RX GND
- UART4_TX 5V
- UART2_RX I2C-SDA
- UART2_TX I2C-SCL

Specs:

Mcu: STM32F722RET6
 Gyro: MPU-6000
 Flash: 16Mb on board
 OSD: AT7456E
 Input: 12-50V (3-6S recommended)
 Bec: 5V2A, 10V1.5A
 Firmware: AIKON F7
 Size(mm): 36x36x7.5
 Weight(g): 7.5



AIKON F7 V2

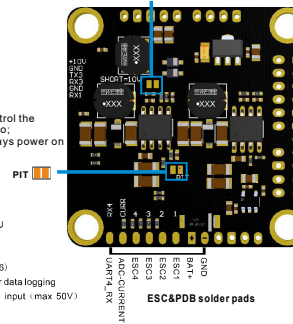
VTX SWITCH JUMPPER

Short "PIT" pad then control the VTX "ON/OFF" via Radio;
 Open "PIT" pad, VTX always power on

Features:

1. STM32F722RET6 MCU
2. MPU6000 GYRO
3. DJI Air Unit Port: Yes
4. BUILT-IN OSD (AT7456)
5. Built-in 16Mb Flash for data logging
6. Wide range of voltage input (max 50V)
7. 5 UARTS
8. VTX SWITCH
9. CAM CONTROLLER.
10. I2C LED-STRIP BUZZER ESC5-ESC8 PPM RSSI

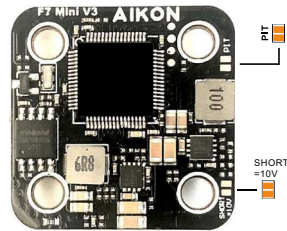
VTX VOLTAGE JUMPPER
 Short "10V" pad to choose 10V
 Open "10V" pad to choose 5V



AIKON
ELECTRONICS
AIKON F7Mini V3

VTX SWITCH JUMPER

Short "PIT" pad then control the VTX "ON/OFF" via Radio;
Open "PIT" pad,VTX always powe on



Features:

1. STM32F722RET6 MCU
2. MPU6000 GYRO
3. DJI Air Unit Port: Yes
4. BUILT-IN OSD (AT7456)
5. Built-in 16Mb Flash for data logging
6. Wide range of voltage input (max 50V)
7. 5 UARTS
8. VTX SWITCH
9. CAM CONTROLLER.
10. I2C LED-STRIP BUZZER ESC5 ESC6 PPM RSSI.

VTX VOLTAGE JUMPER

Short "10V" pad to choose 10V;
Open "10V" pad to choose 5V