



AUGSPURGER®

SXE-3D 3-way DSP Amplifier

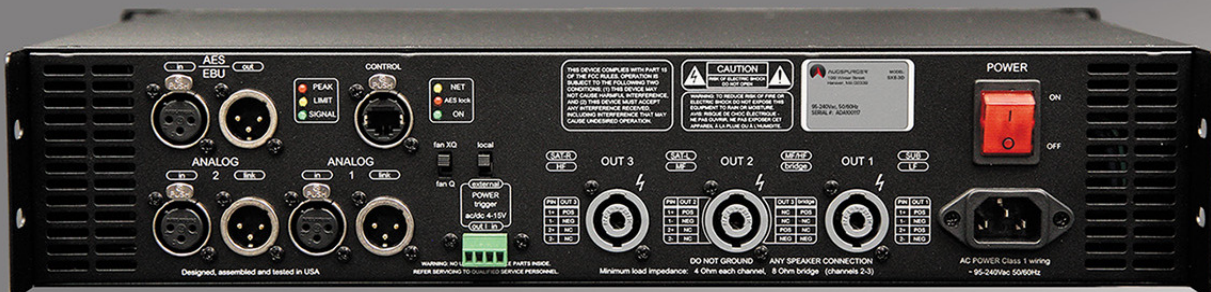


Augspurger SXE-3D now delivers a rack-mount amplification solution that rivals our renowned plate amps in sound quality and ruggedness.

This 3-way powerhouse drives up to 2500W RMS (@ 4Ω) to the subwoofer band, ensuring nearly limitless dynamics while supporting the Low/Mid band with 800W and our highly sensitive rock maple hand-built HF horns with 400W RMS!

With 120 dB of dynamic range, ultra-low IM distortion (0.0008%) and THD+N of 0.003%, our SXE-3D amp is an ideal solution for our Classic 215H-Sub18/218 flush-mounted systems, as well as any of our other large main monitor systems.

Musical and powerful on-board DSP allows for real-time personalized configuration and monitoring with control over a wide range of system parameters, including ten parametric filters on each input and output, plus crossover, delays, phase and more!



Additional Augspurger SXE-3D Specifications:

- 2 analog inputs/outputs and digital AES/EBU input/output
- Audiophile quality 24-bit/96kHz ADC/DAC with low 0.6ms latency
- Mixed-mode 64 bit digital processing optimized for high performance audio
- Suspended/isolated cooling fan with dual-mode control for extra quiet operation in critical applications.
- DSP control via Ethernet connection with bundled Win™ and MacOS™ control SW
- Optional DSP control via front panel LCD display and DSP controls.
- Dimensions: 19" x 3.5" x 12.25"/482.6 x 88.9 x 311.2 mm
- Weight: 17.6 lbs./8kg

AUGSPURGER Monitors
199 Winter Street, Unit A
Hanover, MA 02339 USA
T (781) 616-6325
E: info@augspurger.com
Web: www.augspurger.com



AUGSPURGER®

Breathtaking Power. Unmistakable Clarity.



AUGSPURGER

SXE-3D 3-way DSP Amplifier

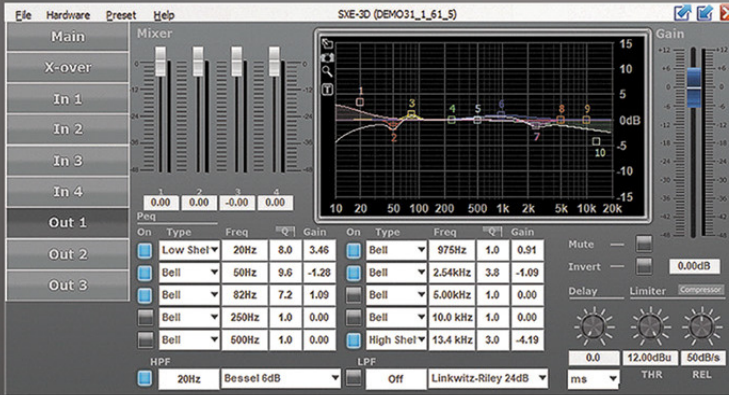
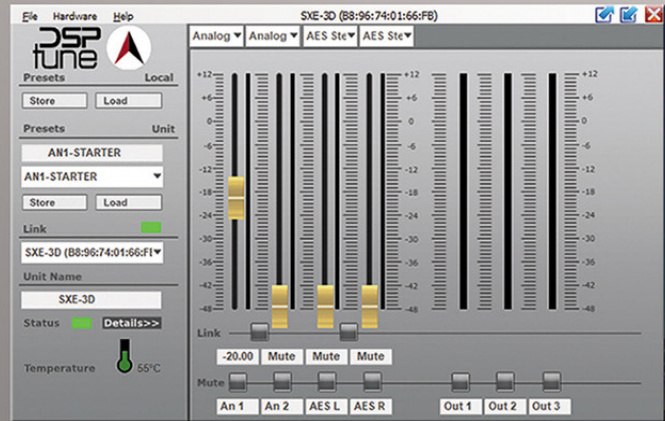


Augspurger SXE-3D 3-way amplifier provides comprehensive DSPtune™ software for accurate and personalized system tuning and acoustical room integration.

In addition to the front panel controls, access to DSPtune™ software is enabled through the rear panel Ethernet connection, which provides real-time system configuration and monitoring via PC/MAC utilizing numerical and graphic controls. Up to 100 programmable presets are available, with fully password protected access levels.

DSPtune™ Features include:

- 10 parametric filters on each input and each output.
- Filters selection: Bell, Shelving, Notch, HPF, LPF, and AllPass]
- Crossover configuration using Butterworth, Bessel or Linkwitz-Riley filters, up to 24dB/oct.
- Delay: up to 1s each Input, 20ms each Output
- True RMS compressor and zero-attack limiter for each Input and Output
- Phase controls, up to 180 degrees
- Freq. Resp.: 10Hz to 40kHz
- 96kHz sample rate / 24 bit conversion
- 120 dB dynamic range



When you join the Augspurger family you enjoy a personalized approach to a world-class monitoring system. An essential part of achieving that “Augspurger sound” is in the tuning of the system.

Top music producers and engineers know that they can step into one of our expertly tuned control rooms and experience the most consistent, reliable and exciting sounding working environments in the world.

Always accurate and organic, with breathtaking power and unmistakable clarity - that's the Augspurger experience.

We'd love to build your dream system. Give us a call.
(781) 616-6325 10AM - 7PM Eastern



AUGSPURGER

Breathtaking Power. Unmistakable Clarity.

www.augspurger.com