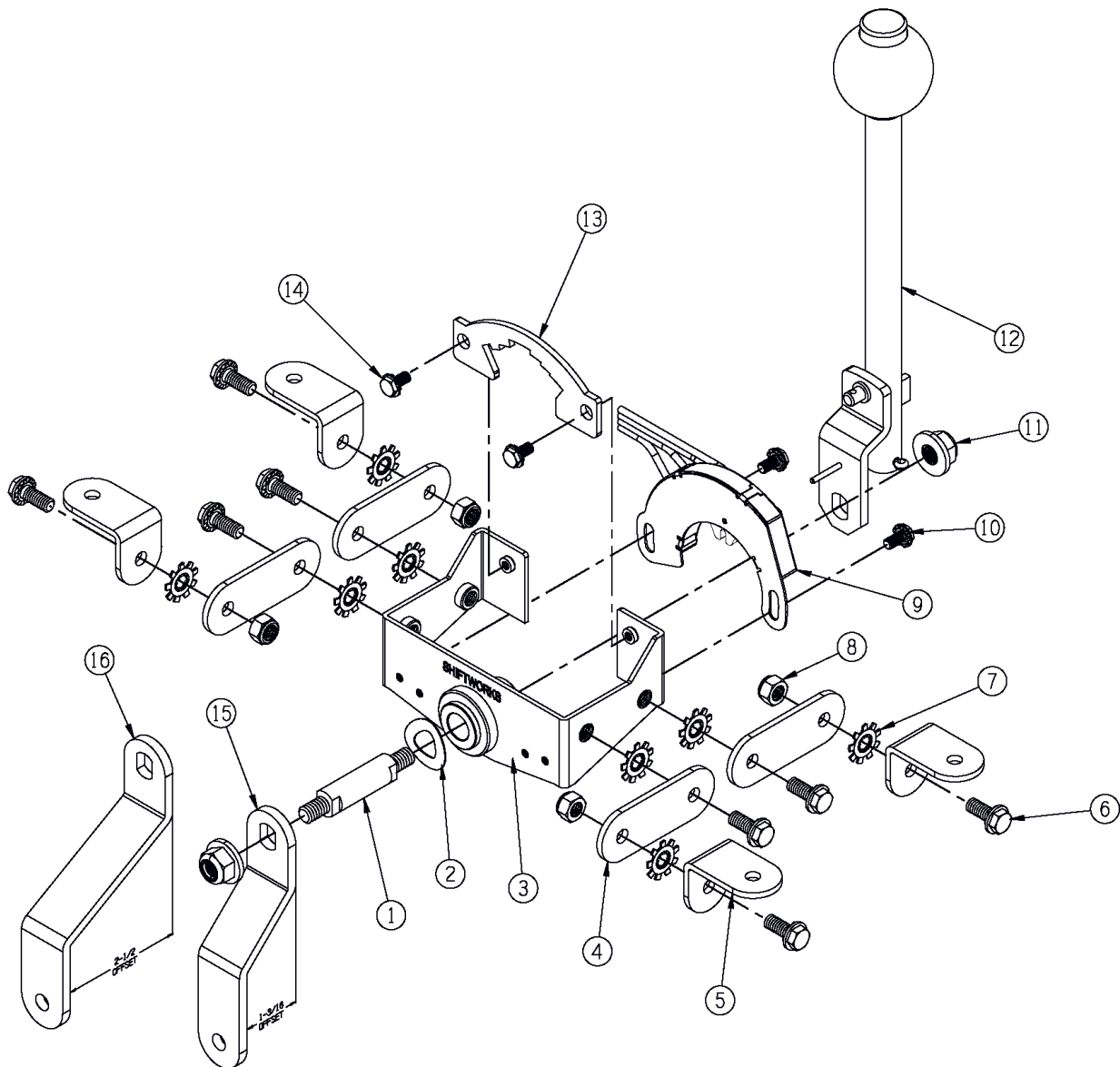


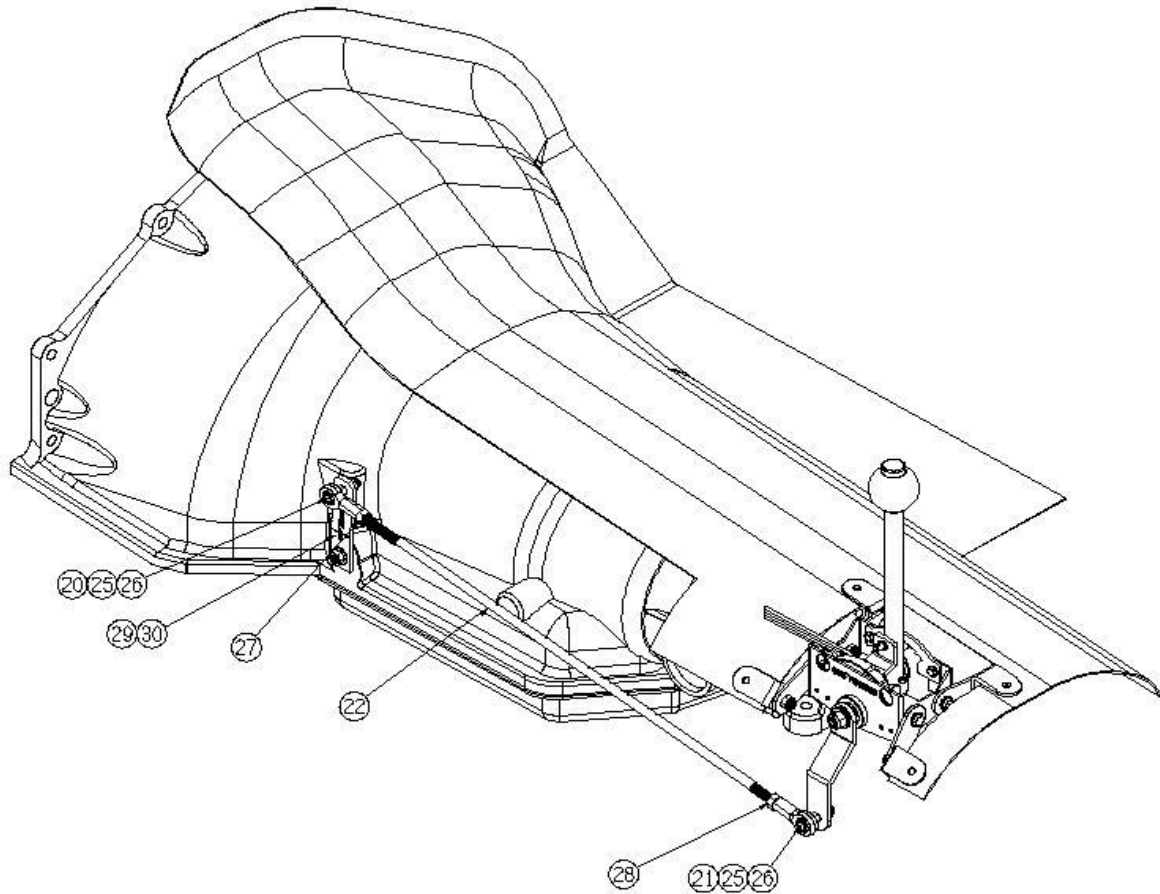
ROD LINKAGE SW230-R / SW280-R / SW282-R

SHIFTWORKS® uses 5/16-inch linkage components with left and right hand threaded ends. The value of using this combination is that the final adjustment can be made by simply turning the rod clockwise or counter clockwise with the linkage installed to achieve the best fit. Rod length is adjustable by shortening the linkage rod(s) included. Use the jam nuts to tighten the linkage. The shifter is designed to allow a very low profile by simply adjusting the legs to suit, while dropping **part of the shifter body below the floor** as illustrated on page 2. This is a universal shifter applicable to many applications but specific to none. Some floor modification may be required.

EXPLODED VIEW

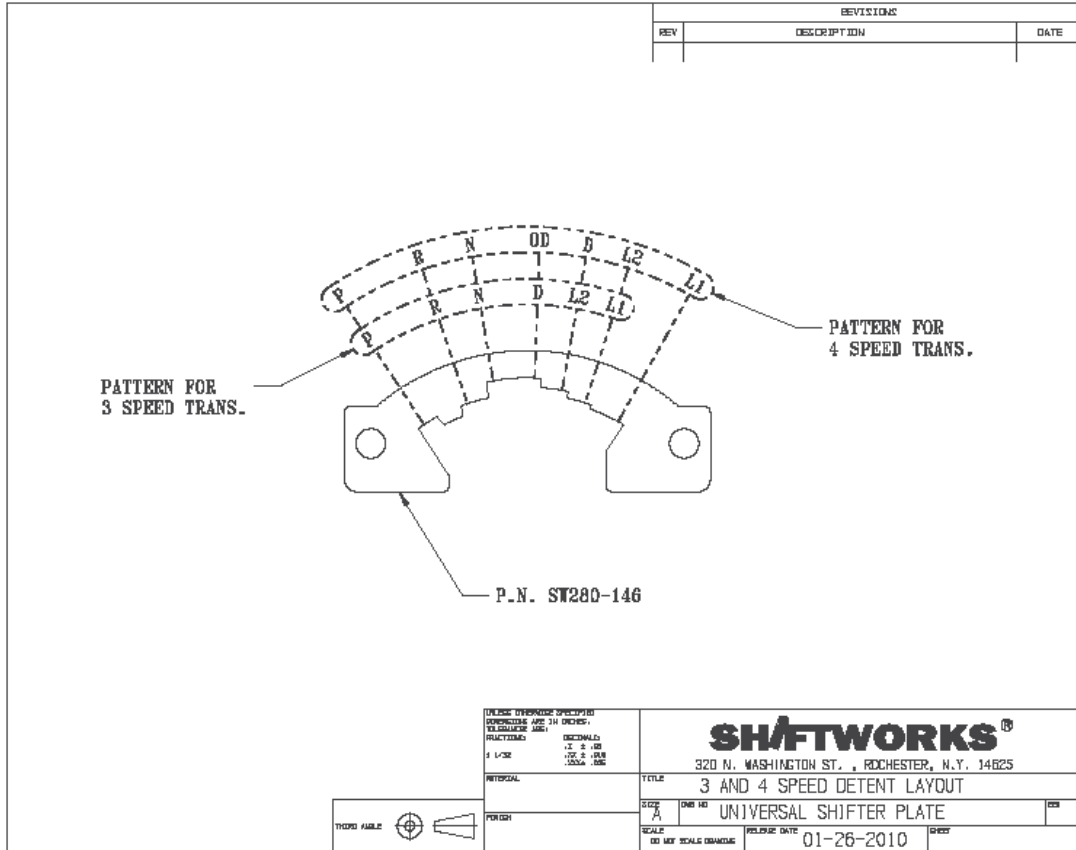


ROD LINKAGE TYPICAL INSTALLATION



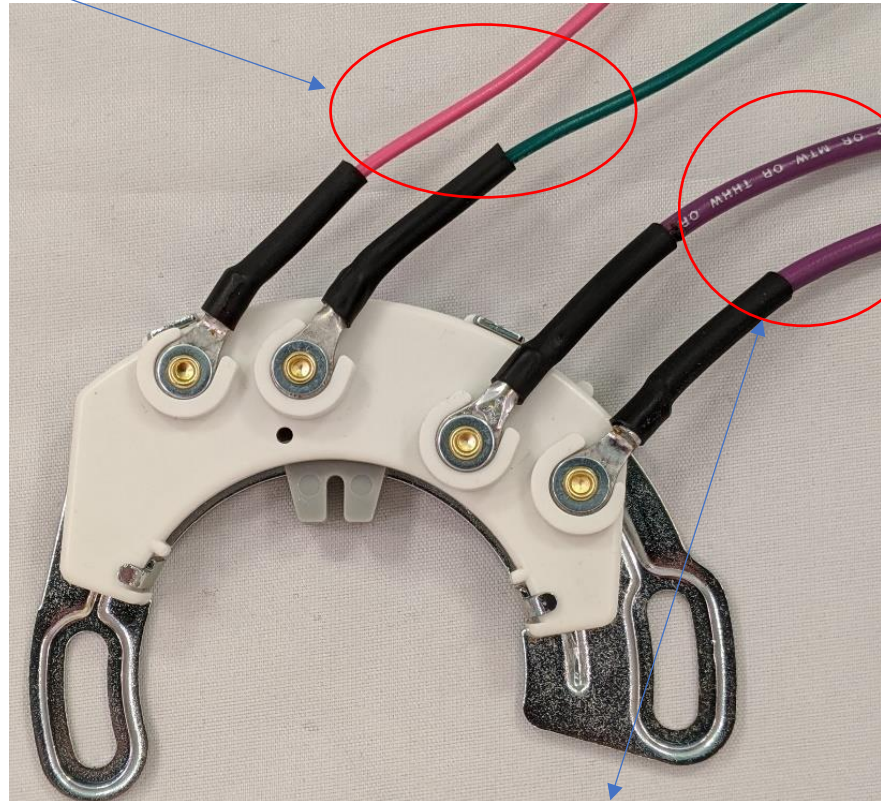
- Attach universal mounting legs/brackets to the shifter base. Use star washers between mating surfaces.
- Determine location of shifter and height required to clear console. Shifter can be lowered to beneath the floor as necessary. See illustration above.
- Adjust legs height and position. Mark and re-check.
- Mark and create hole in floor as necessary.
- Some shifters come with one additional offset shift arm (Part #15) and may be used as required for clearance issues.
- Put transmission control arm (#29) on pointing up, with SHIFTWORKS® name facing out. Put the transmission and shifter into the Neutral position.
- Use linkage components as required. Not all may be necessary. Components are RIGHT and LEFT hand threads.
- Adjust detent stops by spinning rod linkage to shorten or lengthen throw. Some bends in the rod may be necessary for clearances.

TH ONLY, NOT for PowerGlide
Shift Gate Construction – TH Only PG=P R N D L



#S522 or S519 Neutral Safety/Back-up Light Switch

The pink & green wires are for the reverse lights.



The purple wires are for ignition/neutral safety

NOTE: The switch is a simple circuit interrupt.
There is no special in or out for each pair.

www.shiftworks.com

 **WARNING:**

This product can potentially expose you to chemicals including lead, nickel and chromium which are known to the State of California to cause cancer and birth defects or other reproductive harm. For more information go to www.P65Warnings.ca.gov