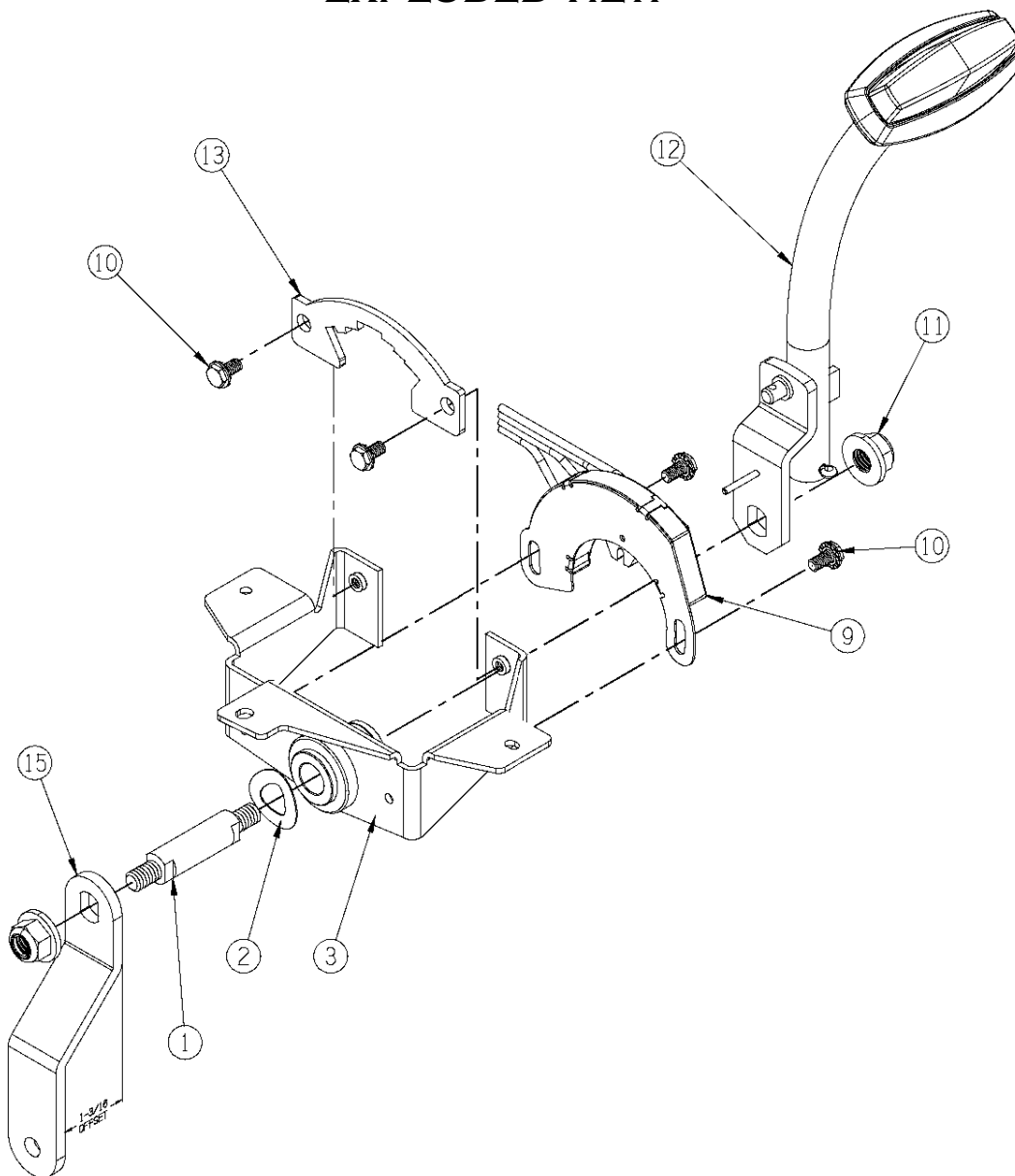




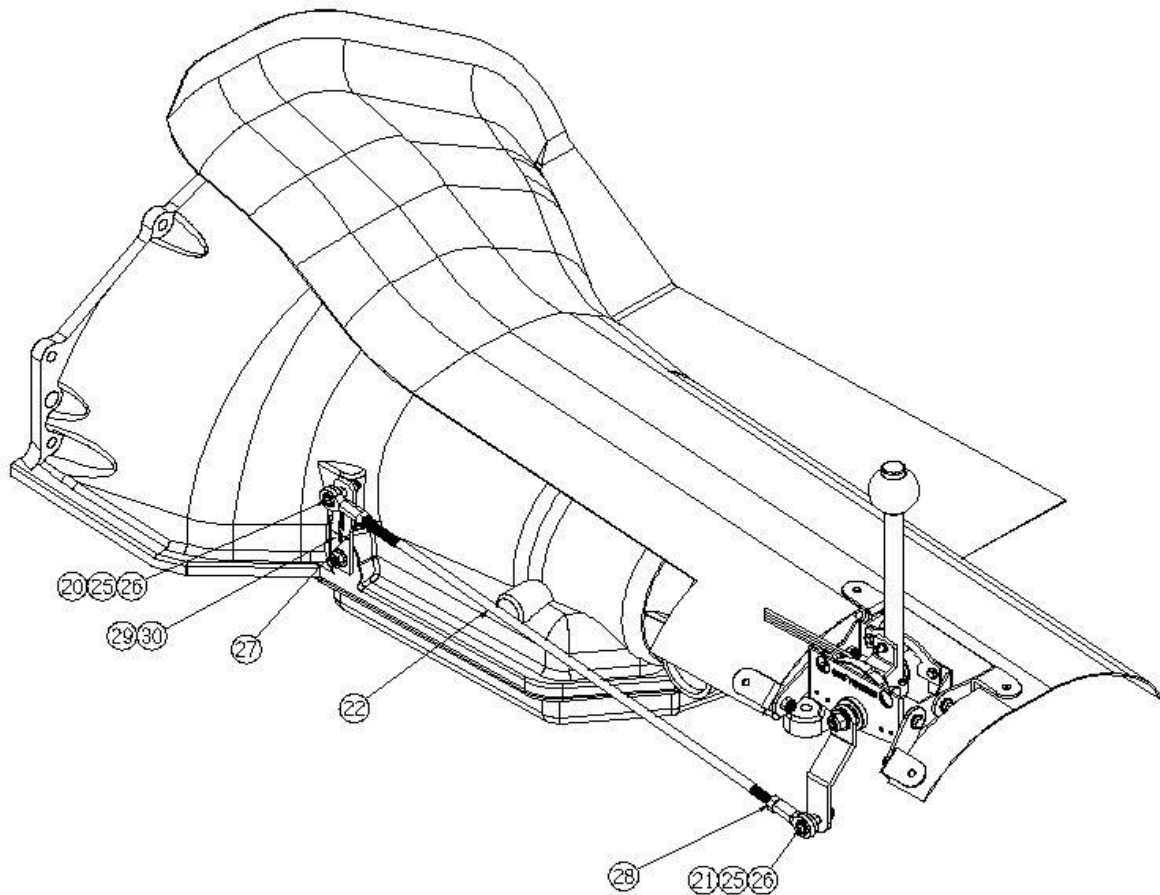
## ROD LINKAGE SW280-RCT & SW280-RCT-02 & -06

SHIFTWORKS® uses 5/16 inch linkage components with **left and right hand threaded ends**. The value of using this combination is that the final adjustment can be made by simply turning the rod clockwise or counter clockwise with the linkage installed to achieve the best fit. Rod can be adjusted by shortening the rod included. **Use the jam nuts to lock the linkage adjustment.**

### EXPLODED VIEW



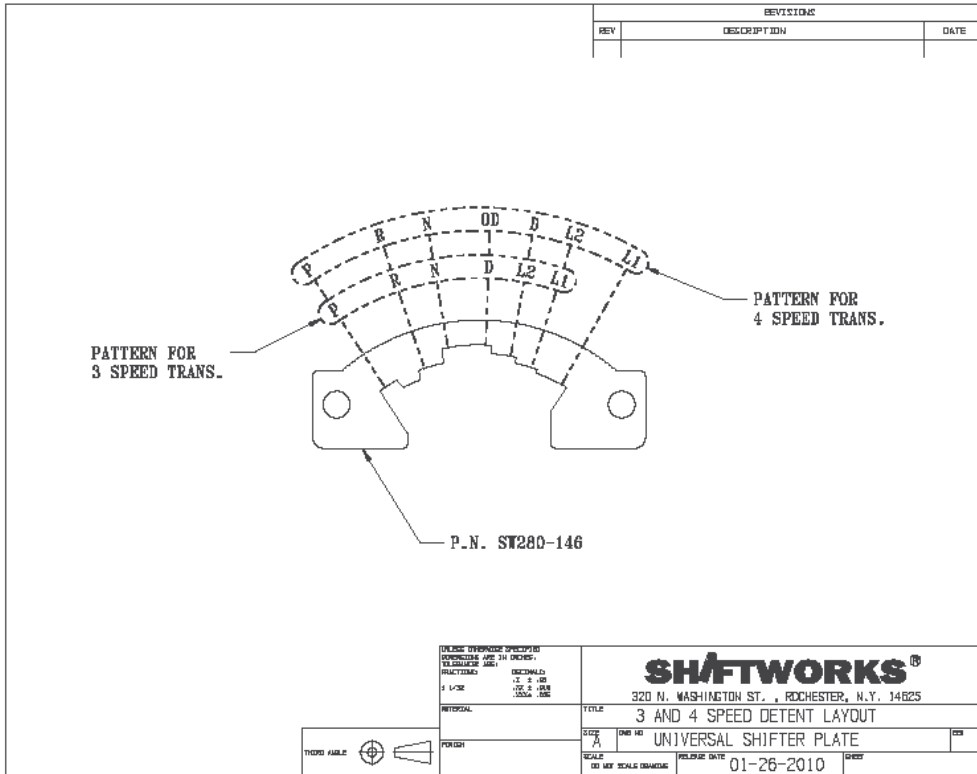
## ROD LINKAGE TYPICAL INSTALLATION



- One additional offset shift arm (Part #15) may be supplied and may be used as required for clearance issues.
- Put the transmission control arm on pointing up, with SHIFWORKS® name facing out. Put the transmission and shifter into the Neutral position.
- The rod linkage can be shortened or bent if necessary. Components are RIGHT and LEFT hand threads. Diagram is illustrative only.
- Adjust detent stops by spinning rod linkage to shorten or lengthen throw.

**POWERGLIDE:** Use the original PowerGlide transmission range select lever for **console shift** cars. Column Shift cars used several different lever styles and you may need to replace the Range Select Shaft (SKU: 649-120). If your PowerGlide was originally a console shift, cable shift transmission or if you are missing linkage parts, contact Shiftworks.

**TH ONLY, NOT for PowerGlide**  
**Shift Gate Construction – TH Only PG=P R N D L**



UNLESS OTHERWISE SPECIFIED  
 DIMENSIONS ARE IN INCHES  
 FRACTIONS ARE  
 DECIMALS ARE  
 1/32 1/16 1/8 3/16 1/4 5/16 3/8 7/16 1/2 5/8 3/4 7/8 1  
 TYPICAL  
 FINISH

**SHIFTWORKS®**  
 320 N. WASHINGTON ST., ROCHESTER, N.Y. 14625

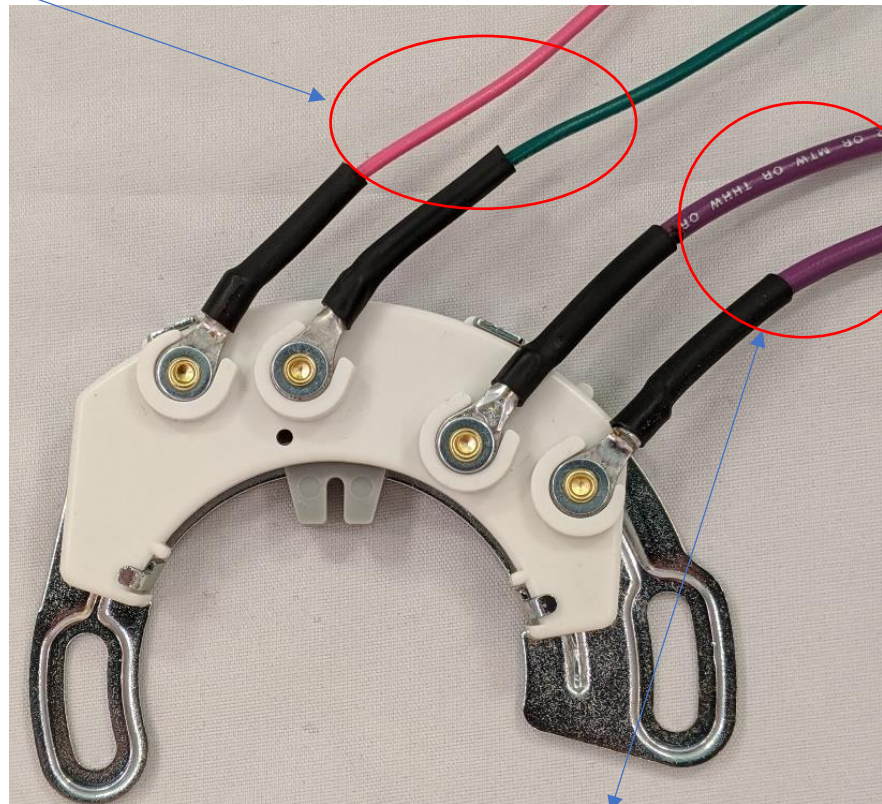
TITLE  
 3 AND 4 SPEED DETENT LAYOUT

SIZE A (SEE 10) UNIVERSAL SHIFTER PLATE

SCALE 1:1 RELEASE DATE 01-26-2010 SHEET

## #S522 or S519 Neutral Safety/Back-up Light Switch

The pink & green wires are for the reverse lights.



The purple wires are for ignition/neutral safety

**NOTE:** The switch is a simple circuit interrupt.  
There is no special in or out for each pair.



**WARNING:**

This product can potentially expose you to chemicals including lead, nickel and chromium which are known to the State of California to cause cancer and birth defects or other reproductive harm. For more information go to [www.P65Warnings.ca.gov](http://www.P65Warnings.ca.gov)