

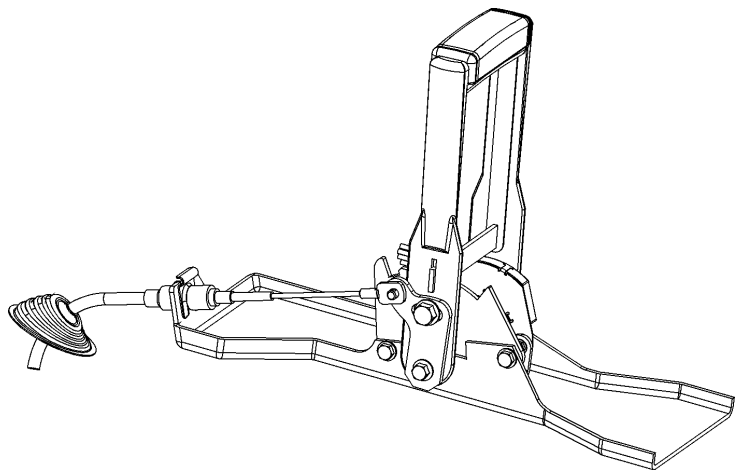
# SHIFTWORKS®

## 6L80E

### SHIFTER CONVERSION KIT

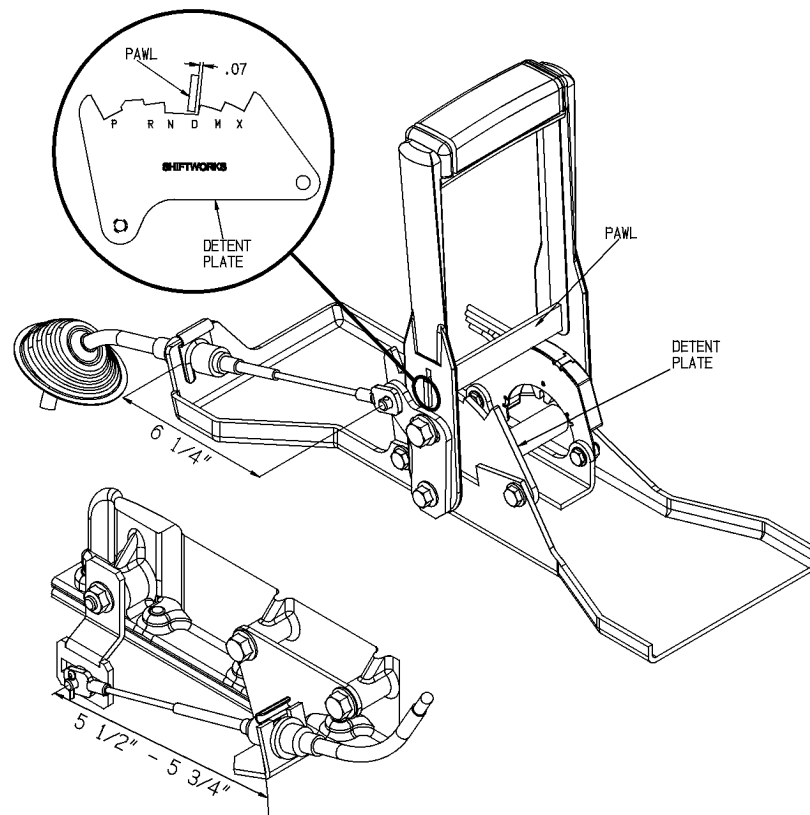
- SC2612**... 1968-70 CHEVELLE
- SC2613**... 1971-72 Chevelle
- SC2614**... 1968-69 CAMARO
- SC2615**... 1970-72 CAMARO\*

\* Indicator is applied directly to the blank space on the console between the blades of the handle.



Kits allow the use of the factory Horseshoe shifter with the 6-Speed automatic 6L80 (PRNDM). Drive (D) is for normal automatic operation, and Manual (M) is selected when the electronic selection of gears is available with a paddle shifter or some kind of other electronic controller.

[www.shiftworks.com](http://www.shiftworks.com)  
© 2016-20 SHIFTWORKS®



### MANUAL LINKAGE ADJUSTMENT

1. Remove console and shifter.
2. Replace shifter detent.
3. Adjust so that the bar barely touches the detent in the Drive-Neutral gate. Tighten bolts.
4. Install the new pan bracket and shift control lever on the transmission.
5. The idea is to have the lever pointing towards the floor in OverDrive and to keep the cable straight.
6. The cable is adjusted at the transmission by moving the pin in the shift control lever.
7. Put BOTH the Transmission and the Shifter in OverDrive. The distance from the pin to the face of the pan bracket should be about 5.5 to 5.75 inches. Adjust so that the cable eyelet can be freely removed when in gear and so that the shift handle is properly engaged.
8. Use GM Cable #3956765 or Shiftworks Cable #K100. No other reproduction cables are recommended.