

# SHIFTWORKS®

## 1964-66 BUICK SHIFTER CONVERSION KIT

TH350 & TH400

☐ SC208-2

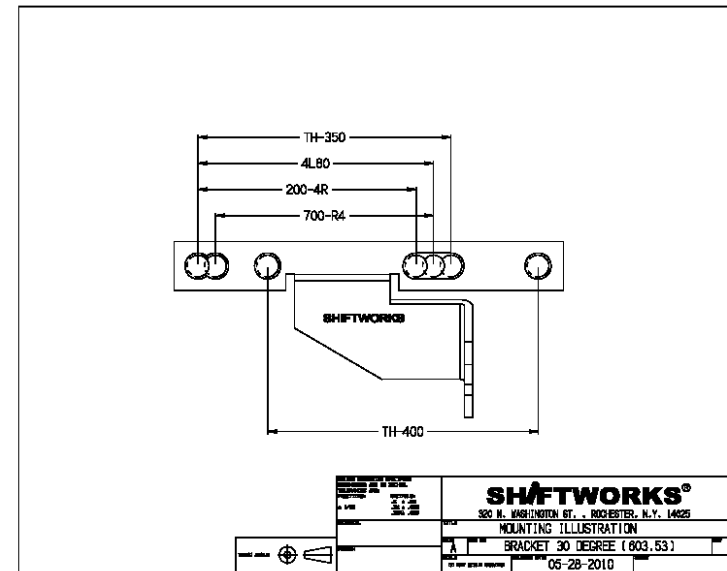
TH200-4R, TH700-R4 & 4L60

☐ SC209-2



**KITS TO CONVERT THE FACTORY CONSOLE SHIFTER TO  
FUNCTION WITH ALL DETENTS AVAILABLE.**

Keep emergency brake on when under vehicle  
© 2018 SHIFTSWORKS®



### SHIFTWORKS® Conversion

1. Remove all Rod Linkage.
2. Use the supplied template to locate the 5/16 hole to be drilled in the handle with the pin installed facing in for the cable eyelet. The template is oriented using the large existing hole as a guide.
3. Install the cable mount bracket to the shifter base. The right edge of the bracket goes to the edge of the shifter base and also butts up to the base riser.
4. Cut off and replace factory detent with SHIFTSWORKS® Detent. Clamp or mount in temporary fashion until satisfied with location.
5. Install new SHIFTSWORKS® Cable. Cable exits floor through existing hole in shifter base.
6. Place shift lever in Drive or OverDrive.
7. Install Pan Bracket and Lever on the Transmission.
8. Manually place transmission Lever in Drive or OverDrive.
9. Put shifter in the same gear as the transmission.
10. Center the adjusting pin in the lever on the transmission. Adjust SHIFTSWORKS® Cable by spinning aluminum connectors at bulkhead of cable to accommodate pin in lever.
11. Clip Cable into the pan bracket and move shifter thru the gears and watch where the stops are. Adjust pin in Lever as required.

© 2018 SHIFTSWORKS®