

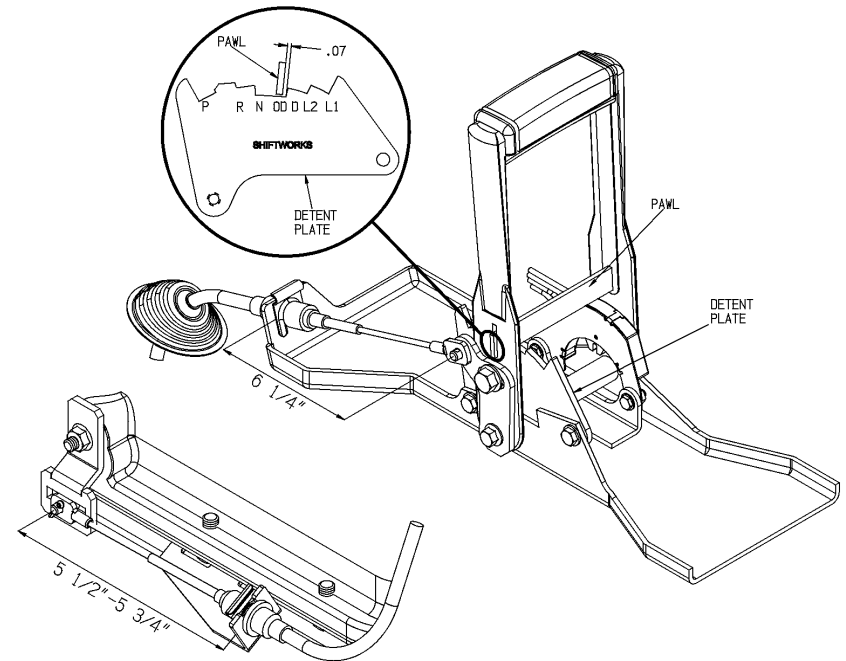
SHIFTWORKS®

1968-72 BUICK SHIFTER CONVERSION KIT SC207-2 4-Speed OD Automatics



**KITS TO CONVERT THE FACTORY CONSOLE SHIFTER
TO OverDrive OPERATION WITH ALL DETENTS AVAILABLE.**

© 2003-2018 SHIFTSWORKS®



1. Replace factory detent with SHIFTSWORKS detent.
2. Install new SHIFTSWORKS #K100 Cable.
3. Place shift lever in OverDrive, and engage Emergency Brake.
4. Install Pan Bracket and Lever on the Transmission.
5. Manually place transmission Lever in OverDrive.
6. Clip Cable into the pan bracket and Measure distance from rearward face of attachment bracket to center of cable attachment pin on the Lever. This **Dimension A 5.75**. If not, loosen pin nut and move pin accordingly. Retighten pin nut. The end of the cable should fit freely on the pin. Reinstall clip.
7. You should now be in adjustment.
8. Move shifter thru the gears and watch where the stops are. Adjust pin in Lever as required.

© 2003-2018 SHIFTSWORKS®