

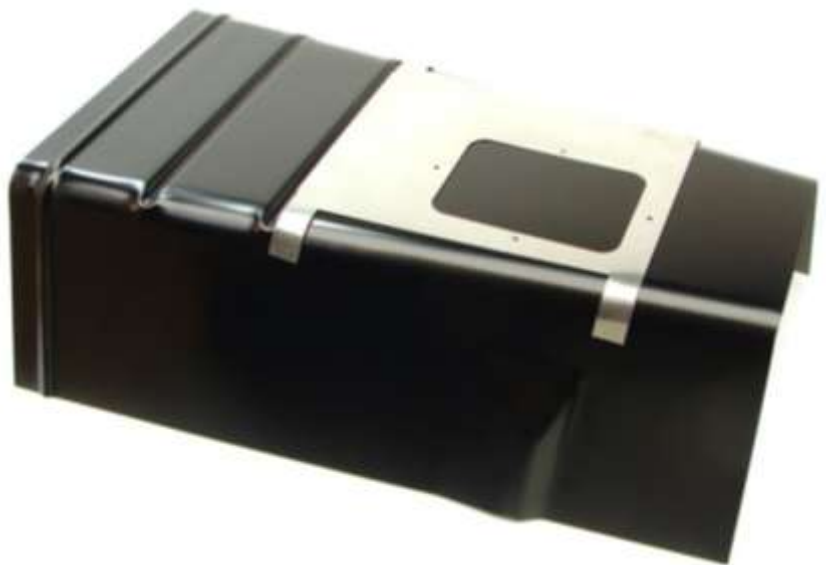
Basic Steps to Follow:

- Draw diagram on your new floor pan using the dimensions as a guide
- Test fit and make necessary adjustments to suit your console
- Mount shifter



For 1967, the shifter mounted to the floor through a clean-cut rectangular shaped hole which had a reinforcing ring welded to the underside of the tunnel around the shifter opening. The hole in the tunnel for the '67 auto floor shifter was the same as the '67 manual shifter.

Template Solutions



These templates can be found at companies like Classic Industries, Camaro Central, or Heartbeat City.

*These are approximate dimensions. ALWAYS test fit before you cut or drill.

Hole Specifications



Length of opening = 4.75" (4 $\frac{3}{4}$ ")

Width of opening = 3.375" (3 $\frac{3}{8}$ ")

Distance from Passenger side of Tunnel = 2.875" (2 $\frac{7}{8}$ ")

Reinforcement Ring



This is the reinforcement ring that came welded on the underside of the tunnel from the factory. This is not a part that Shiftworks currently offers but it's helpful to see what it looks like and where it's supposed to go.

*These are approximate dimensions. ALWAYS test fit before you cut or drill.