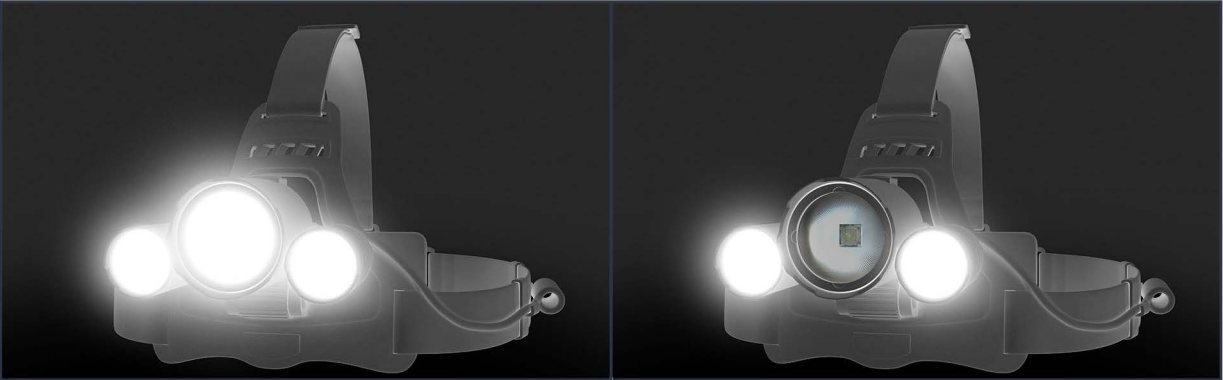


DanForce®

HL-690 SPECIAL EDITION

User manual





Hight Mode

Low Mode

LUMENS	6000lm	2000lm
DISTANCE	1000 feet	400 feet
BURNTIME	9 hours	12 hours
WEIGHT	330g	

WARNINGS



AVOID EYE INJURY - Do not stare directly into beam or point it directly into anyone's face. Doing so for more than a few seconds could cause retinal damage.

Not recommended for use by children under fourteen years of age.

Any battery may leak harmful chemicals which may damage skin, clothing or the inside of the headlamp.

TO AVOID RISK OF INJURY, DO NOT LET ANY MATERIAL LEAKED FROM A BATTERY COME IN CONTACT WITH EYES OR SKIN.

Any battery may rupture or explode if put in a fire or otherwise exposed to excessive heat.

TO AVOID RISK OF INJURY, DO NOT EXPOSE BATTERIES TO EXCESSIVE HEAT.

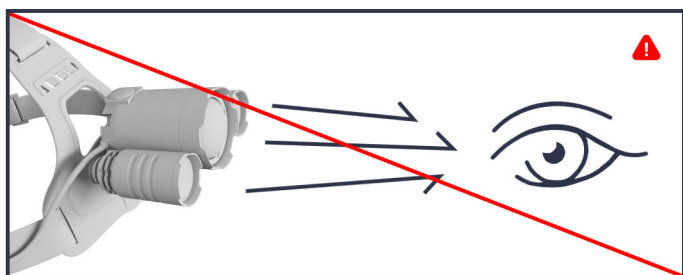
To reduce the risk of personal injury or harm to your headlamp, take the following precautions:

Use only 18650 lithium batteries from a reputable manufacturer. Do not use different brands of batteries in the same headlamp. When replacing batteries, always replace the whole set. Do not try to recharge batteries that are not specifically designed to be recharged.

Warning: batteries must be inserted correctly. Failure to do so could cause permanent damage to the LED module.

Follow battery manufacturer's instructions as to proper handling, storage and disposal of batteries.

Carefully follow the steps listed under **INSPECTION AND MAINTENANCE**.



INSTRUCTIONS



BATTERY

Use 18650 3.7v lithium ion 2200mah. Do not mix old and new batteries or different battery types.

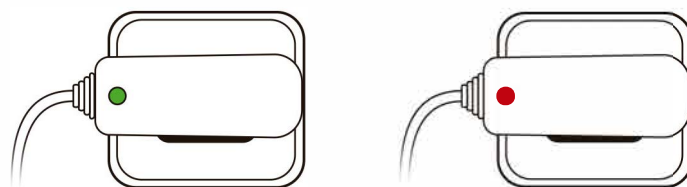
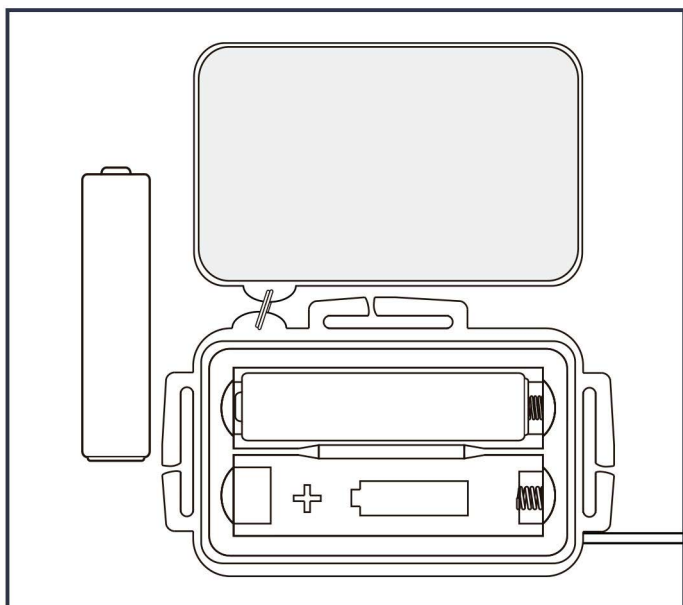
Dispose of used batteries properly. Remove batteries during store and transport.



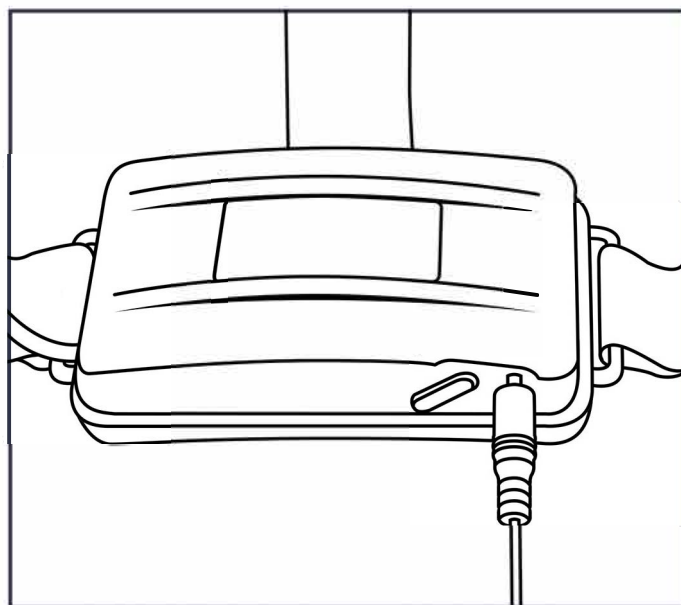
CHARGING

Before the first use, please fully charge the headlamp. Charging for the first time takes up to 5 hours. Let it charge until the **red** light on the charger become **green**.

1. Open the battery case, insert the batteries by the drawing.



2. Plug the charging cable into the charging slot. Normal Charging time: 4-7 hours.



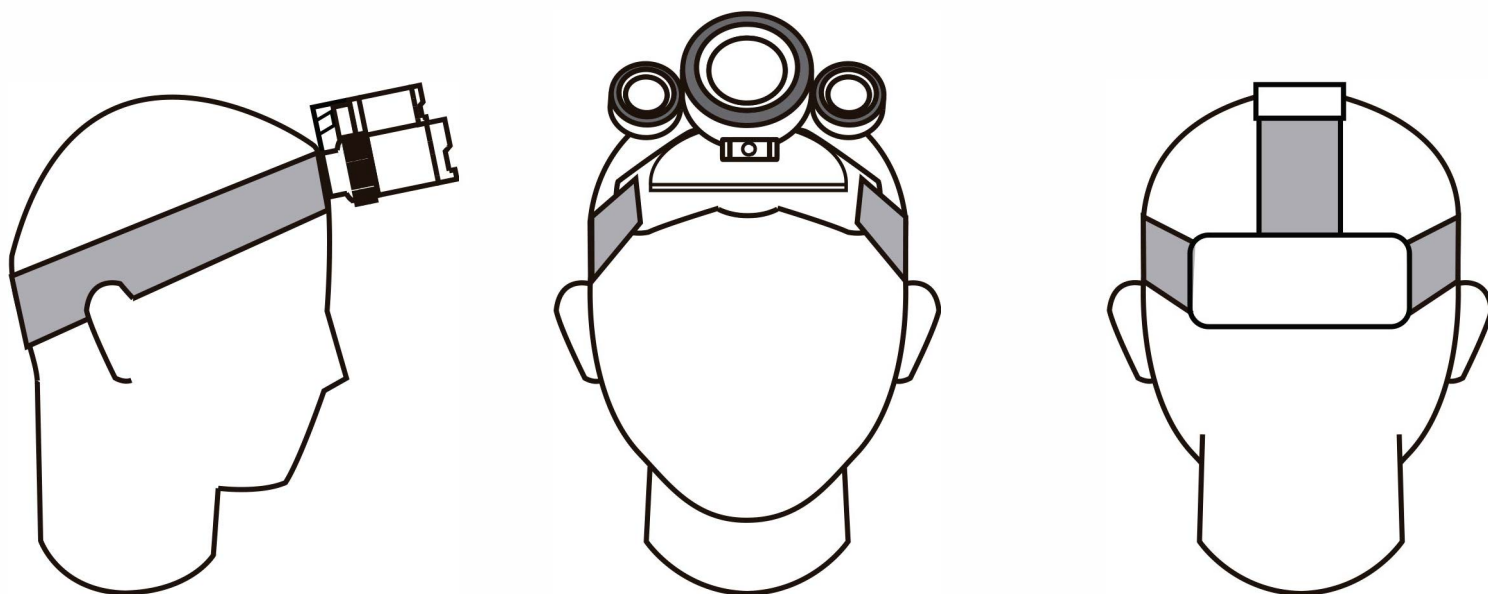
HEADLAMP ADJUSTMENT



Place the headlamp on your head with the lights forwarded. The center of headlamp base should be in the middle of your forehead. The battery case position should be at the height of your ears and between them.

*With the upper adjustment clip, adjust the strap to your head height. (Move the clip towards the flashlight to enlarge, move to batteries to make it smaller).

*With the side adjustment clip, adjust the strap to your head wide. (Move the clip towards the headlamp to smaller, move to the batteries to enlarge).

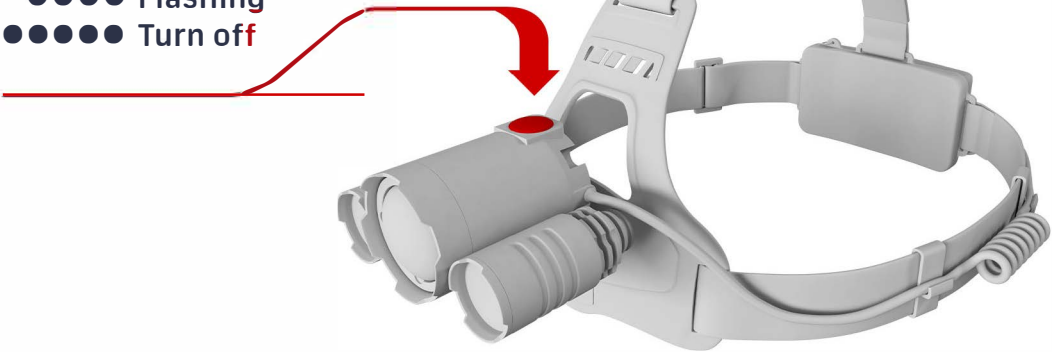


4 LIGHT MODES



Press the main button to turn on and switch modes.

- Main LED
- Secondary LEDs
- All LEDs together
- Flashing
- Turn off



1 MEDIUM MODE

LOW MODE 2

3 HIGH MODE

STROBE MODE 4

4 LIGHT MODE

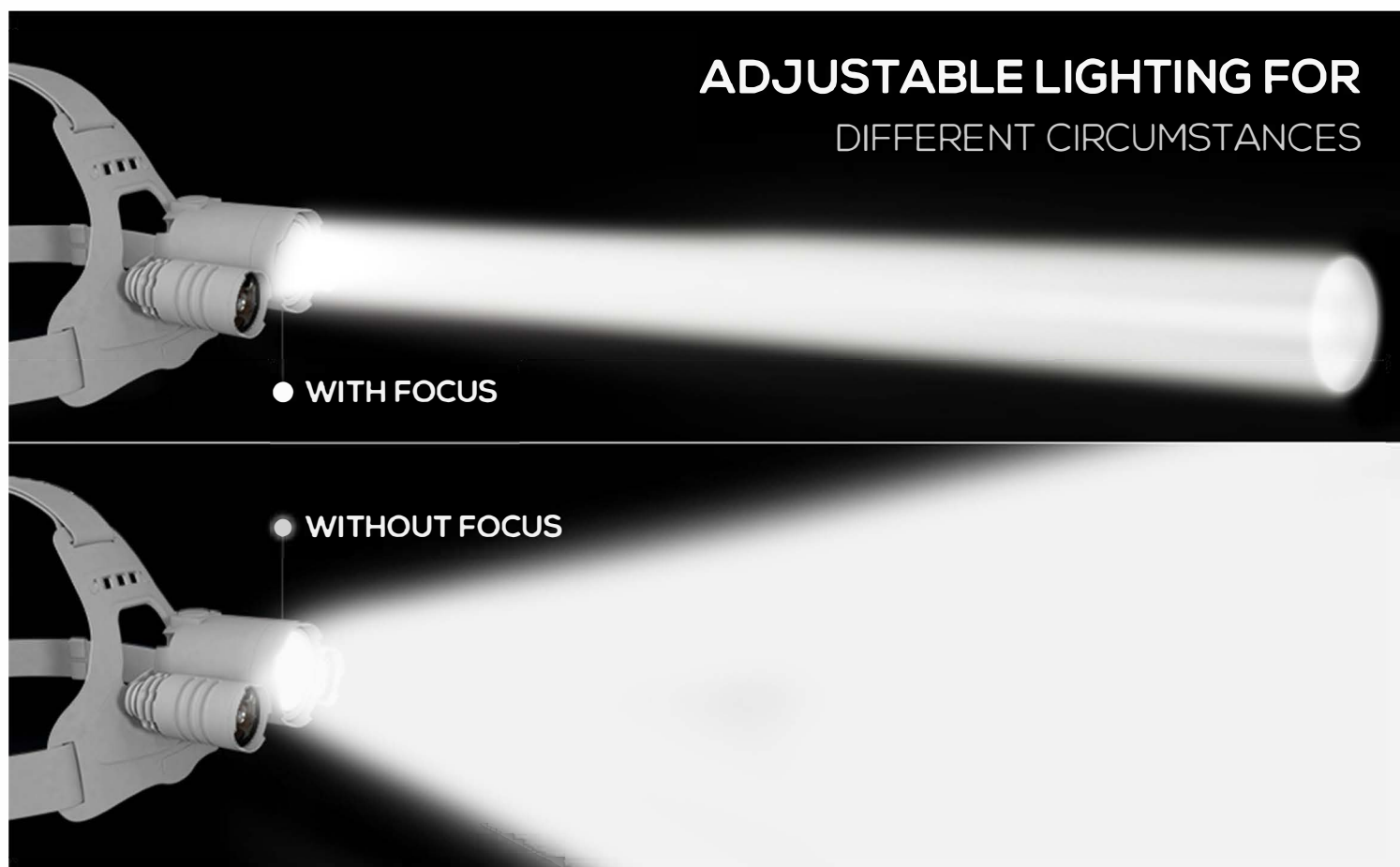
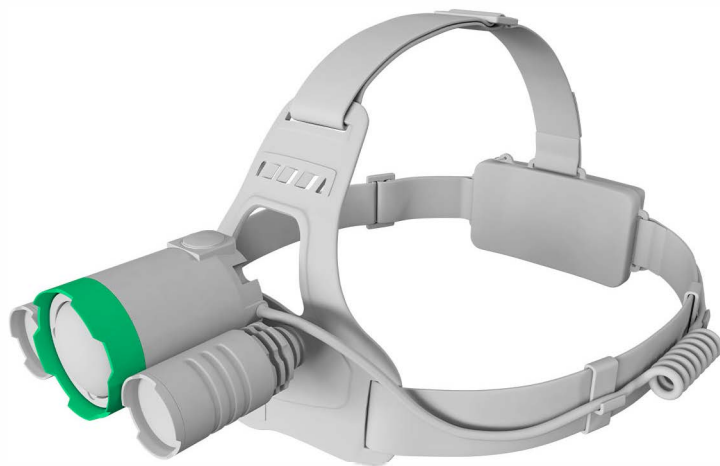
THE FOCUS SYSTEM



The focus system allows to expand the flood of the headlamp.

The focus in the headlamps is rotatable; it means you have to rotate the head of the headlamp in order to adjust it.

Rotate clockwise to increase the beam.
Rotate counterclockwise to reduce the beam.



CHANGING THE ANGLE OF HEADLAMP



The headlamp can be easily totated downside up to 90°. The head will stay in the chosen angle.

