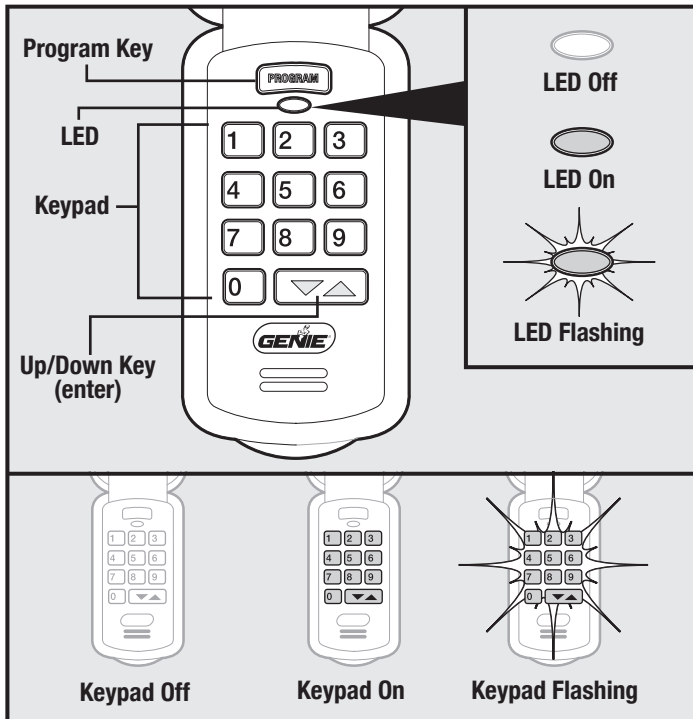




Wireless Keypad Instructions

FOR YOUR CONVENIENCE—IT'S EASIER TO PERFORM PROGRAMMING BEFORE MOUNTING KEYPAD.

Keypad Overview



⚠ WARNING

A moving door can cause serious injury or death.

- Keep people clear of opening while door is moving.
- **DO NOT** allow children to play with wireless keypad.
- Wall control should be mounted within sight of door, at least 5 feet above floor and clear of moving parts.
- During programming, the door opener could begin to run, so stay away from the moving door and its parts. To keep the door from moving, close the door and disconnect it from the opener by pulling the Emergency Release Cord.

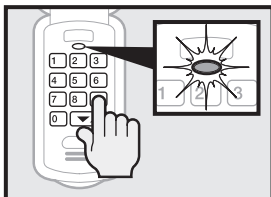
⚠ WARNING

If Safety Reverse does not work properly:

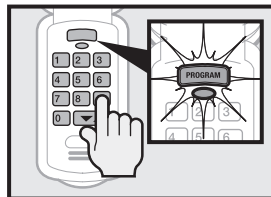
- Close door and disconnect the opener using Emergency Release Cord.
- **DO NOT** use door opener, remote, or wireless keypad.
- Refer to **Door and Door Opener Owner's Manuals** before attempting any repairs.

Keypad LED's

Successful Entries

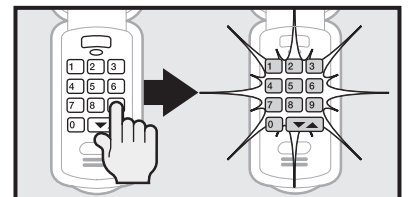


The Keypad's LED will flash on and off each time you press a key indicating the keypad has accepted each entry.



The Keypad's LED and Program key will flash slowly. Keypad lights will remain ON (for 30 seconds) if you have entered a valid PIN or have successfully programmed your Keypad.

Failed Entry



The Keypad's LED and Program key will light. Keypad will flash quickly if you have entered an invalid PIN or have failed to program your Keypad correctly and then will go OFF. Retry failed step.

Preparation for Use (Single Door)

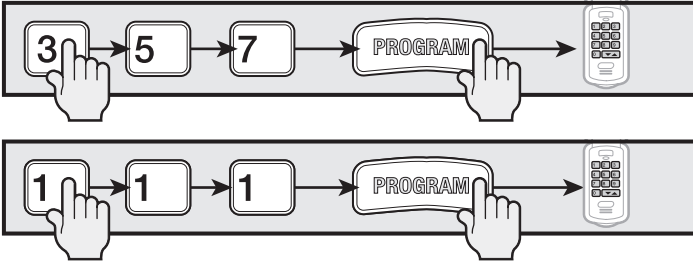


Change your keypad to work with ALL Genie Intellicode® openers by using the following steps:

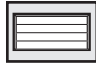


1. Enter 3-5-7 and press the **Up/Down key**.
 2. When the keypad lights stay on steady,
 3. Hold the **Program key** down until the LED changes from green to red.
 4. Release the **Program key** and allow your keypad to go dark.
- Your keypad is now set for ALL Genie model openers.

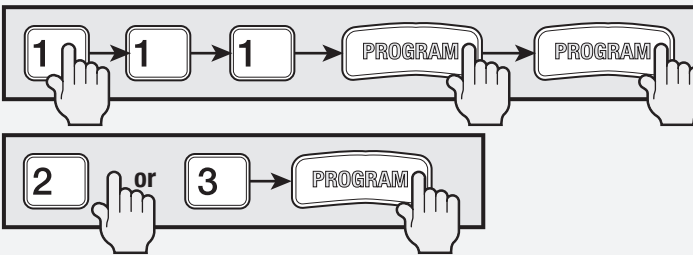
Setting Up a PIN



1. Press in order 3-5-7.
2. Press the **Program key**.
3. Enter your new PIN (3-8 characters).
4. Press **Program key**.

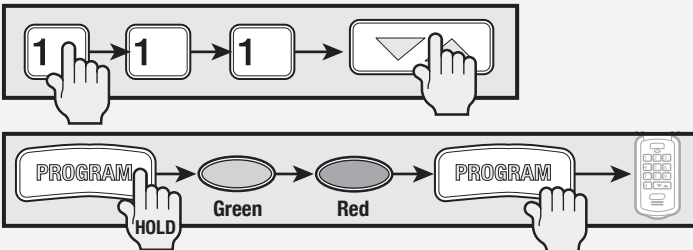
Your single door keypad is ready for programming. 

For multiple doors only




1. Enter your new PIN (3-8 characters).
2. Press **Program key** 2 times.
3. Now press the number of doors you need to control. (2 or 3)
4. Press **Program key**.

After step 4 repeat the following steps for each door.



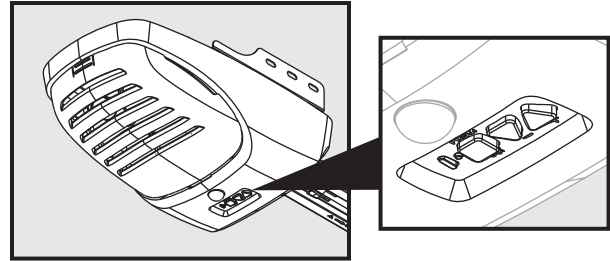
1. Enter your PIN and press the Up/Down Key
2. Enter number of door 2 or 3
3. Hold the Program keydown until the LED changes from green to red.
4. Release the Program key and allow your keypad to go dark.
Your keypad is now set for all Genie model openers on the **DOOR NUMBER CHOSEN**.

Your multiple door keypad is ready for programming. 

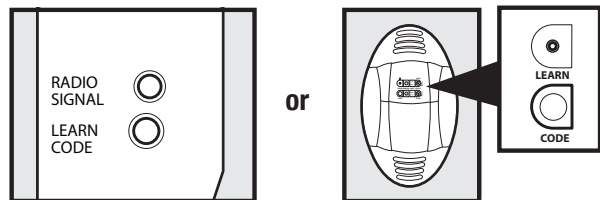
Programming

Locate Your Opener's Programming Buttons and LED

New Genie Openers:

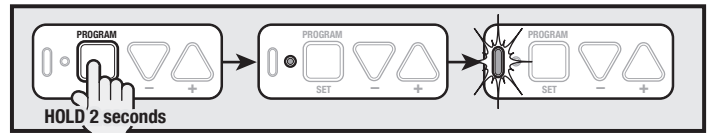


Other New Model Genie Openers:

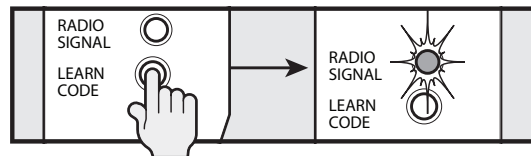


- If your opener has a black antenna wire and serial number beginning with a number less than 10—for older Intellicode openers the Learn Code button and LED will be near the antenna. You may have to open the light lens.
- If your opener does not have an antenna—you have an external receiver. The Learn Code Button and LED are inside. You must remove the cover to access the learn code button.

Synchronizing Keypad to Opener

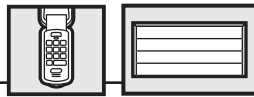


- 1A. Press and hold **Program Set key** for 2 seconds. (The round LED turns blue and then goes off. The long LED will begin flashing purple.)

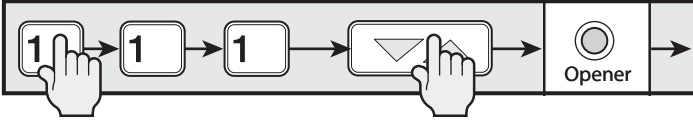


- 1B. Press the Learn Code button and LED will blink.

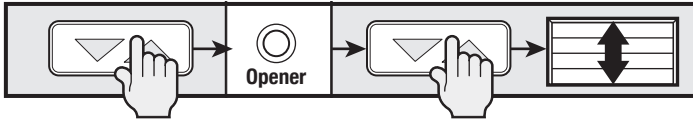
NOTE: The Learn Code button and LED may be located under the light lens or you may have to remove your unit's cover.



Using The Keypad



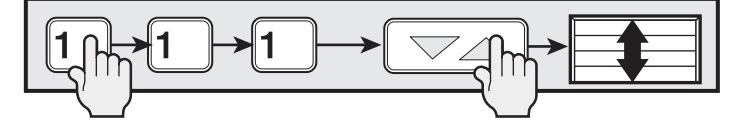
2. Enter your PIN.
3. Press **Up/Down key**. Opener LEDs will stay on steady.



4. Press **Up/Down key** again. Opener LEDs will turn off.
5. Press **Up/Down key** again. Door opener will run.

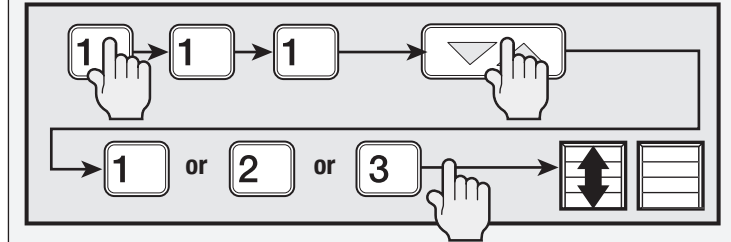
NOTE: Pressing any key will stop or start the opener while the door is in motion. The door will automatically stop fully open or closed. When the door has stopped moving, pressing on any single button will activate door until backlight goes off (30 seconds).

NOTE: Rapid blinking of the red LED on the Powerhead indicates an error. When the blinking stops, you must start programming steps over.



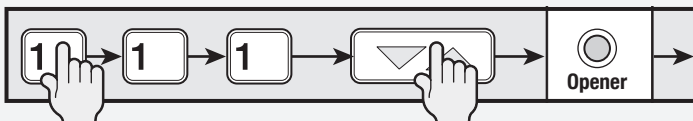
1. Enter your PIN.
2. Press **Up/Down key**. Door opener will run.

For multiple doors only

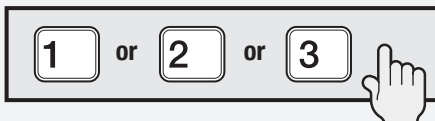


1. Enter your PIN.
2. Press **Up/Down key**.
3. Press the number of door to operate. Door opener will run.

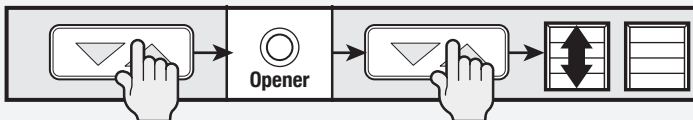
For multiple doors only



1. Enter your PIN.
2. Press **Up/Down key**. Opener LEDs will stay on steady.



3. Select the number of the door you want to program (1, 2 or 3).



4. Press **Up/Down key** again. Opener LEDs will turn off.
5. Press **Up/Down key** again. Door opener will run.

Each door **MUST** be programmed separately. You **MUST** start all steps over when programming multiple doors.

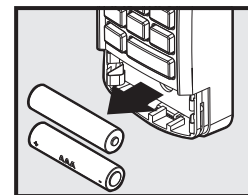
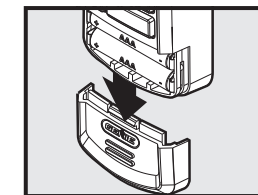
NOTE: Pressing any key will stop or start the opener while the door is in motion. The door will automatically stop fully open or closed. When the door has stopped moving, pressing on any single button will activate door until backlight goes off (30 seconds).

NOTE: Rapid blinking of the red LED on the Powerhead indicates an error. When the blinking stops, you must start programming steps over.

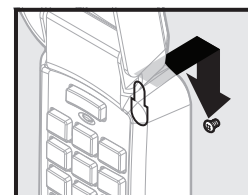
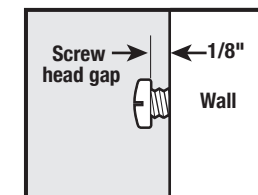
Mounting Keypad



The keypad **MUST** be mounted within sight of the garage door(s) at least 5 feet above the floor and clear of any moving door part.



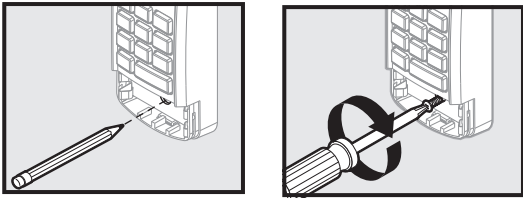
1. Remove battery cover and batteries.



2. Drill 1/16" pilot hole for the top mounting screw (included).
3. Install a screw into the pilot hole, leaving a 1/8" gap between the screw head and wall.
4. Hook the keypad slotted mount on back over the screw.

(Continued other side)

Mounting Keypad

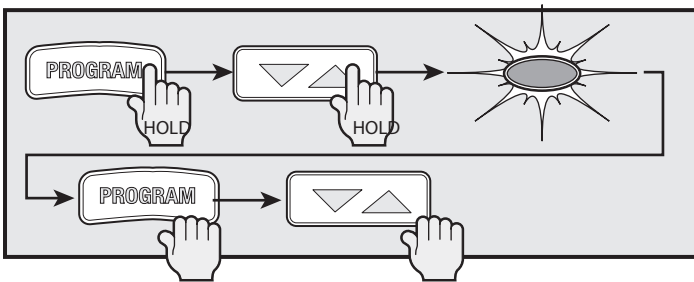


5. Mark and drill a pilot hole for the bottom screw and secure keypad to wall (**DO NOT** overtighten).
6. Reinstall batteries and cover.

Resetting PIN



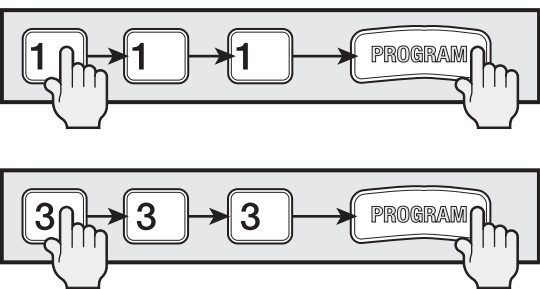
If you have forgotten your PIN or you fear it may have fallen into unauthorized hands, you must erase the old programming.



To erase, follow these simple steps:

1. Press and hold **Program key** and then the **Up/Down key** for 5 seconds or until the LED starts to slowly blink. When blinking stops you have successfully erased the old programming.
2. Go back and follow the steps in "Setting Up a Pin" and "Programming".

Changing Your PIN

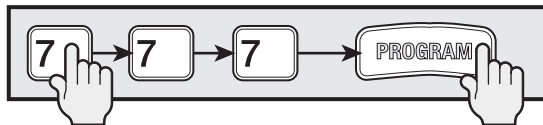
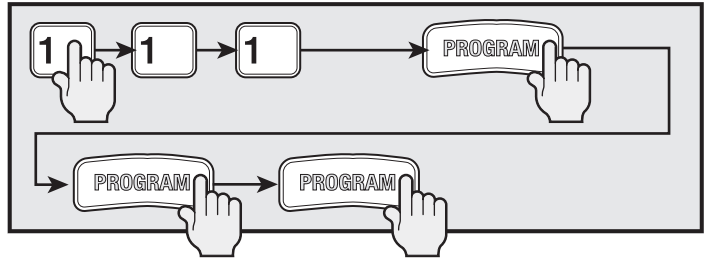


1. Enter your current PIN, then press **Program key**.
2. Enter your new PIN, press **Program key**.

Temporary PIN



A temporary PIN allows temporary access to your garage by repair persons, meter readers, etc. while you are out, if you so desire.



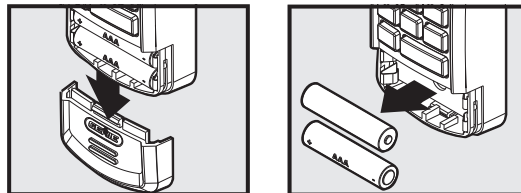
1. Enter your current PIN and press **Program key** 3 times.
2. Enter a temporary PIN and press **Program key**.

NOTE: The temporary PIN is automatically cancelled whenever you enter your normal PIN after the temporary PIN is set.

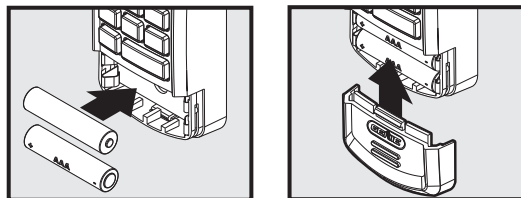
Replacing Batteries



If the Keypad backlight does not come on, this indicates the need to replace the batteries. No programming is lost when replacing the batteries.



1. Remove battery cover and batteries.



2. Replace batteries with same type batteries and check proper direction for (+) and (-) terminals.

Additional Genie® products can be ordered through your local GENIE® Professional Dealer. To locate a dealer near you—call 800-OK-GENIE. If the first five digits of your serial number fall between 10289 and 11188 contact Genie for assistance 800-354-3643.

FCC and IC CERTIFIED

This device complies with FCC Part 15 and RSS 210 of Industry Canada. This equipment has been tested and found to comply with the limits for a Class B digital device, pursuant to Part 15 of the FCC Rules. These limits are designed to provide reasonable protection against harmful interference in a residential installation. This equipment generates, uses and can radiate radio frequency energy and, if not installed and used in accordance with the instructions, may cause harmful interference to radio communications. However, there is no guarantee that interference will not occur in a particular installation. If this equipment does cause harmful interference to radio or television reception, which may be determined by turning the equipment OFF and ON, the user is encouraged to try to correct the interference by one or more of the following measures: (1) Re-orient or relocate the receiver antenna, (2) Increase the separation between the opener and receiver, (3) Connect the opener into an outlet on a circuit different from that to which the receiver is connected, and (4) Consult your local dealer.