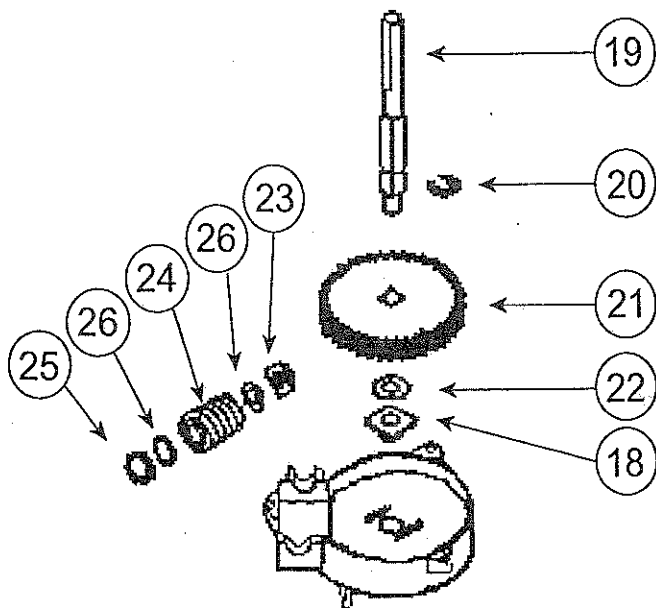


CHAINGLIDE®

DRIVE GEAR REPLACEMENT



18	33223A	DRIVE SHAFT BUSHING
19	33353A	DRIVE SHAFT
20	24311B17	RETAINING RING
21	27096A	GEAR
22	27089A	WASHER (DRIVE SHAFT)
23	33221A	MOTOR SHAFT BUSHING
24	33355A	WORM
25	33222A	PM WASHER
26	27087A	THRUST WASHER (2)

THIS JOB CAN BE DONE WITH A 1/4" NUT DRIVER OR SOCKET WRENCH WITHOUT THE NEED TO REMOVE THE UNIT FROM THE CEILING.

1. UNPLUG UNIT.
2. REMOVE MAIN MOTOR COVER FROM OPERATOR POWERHEAD WITH THE 1 (ONE) 1/4" SCREW.
3. REMOVE 3 (THREE) 1/4" SCREWS ATTACHING GEAR CASE COVER TO MAIN HOUSING. USE CARE WHEN REMOVING COVER, SMALL PARTS (NUMBERS 18, 22 & GEAR 21 & SHAFT 19) COULD COME OUT WITH THE COVER.
4. REMOVE BROKEN DRIVE GEAR. INSPECT FOR OTHER BROKEN PARTS AND PIECES OF OLD GEAR.
5. APPLY A SMALL AMOUNT OF LOW TEMPERATURE GREASE TO NEW DRIVE GEAR. EXCESS GREASE FROM ORIGINAL GEAR IS ACCEPTABLE
6. REPLACE NEW DRIVE GEAR.
7. MAKE SURE THE DRIVE SHAFT BUSHING (#18) IS PROPERLY SEATED INTO BOTTOM OF GEAR CASE COVER.
8. REPLACE DRIVE SHAFT WASHER TO SHAFT WHILE INSTALLING GEAR CASE COVER.
9. REPLACE THE 3 (THREE) 1/4" SCREWS.
10. REPLACE POWERHEAD COVER AND SCREW. (NOTE: THESE UNITS WILL NOT OPERATE CORRECTLY WITHOUT THE MAIN MOTOR COVER INSTALLED.
11. CHECK DOOR BALANCE, LIMIT SWITCH ADJUSTMENTS AND FORCE ADJUSTMENTS TO INSURE YOUR UNIT IS OPERATING SAFELY AND EFFICIENTLY. SEE OWNERS MANUAL FOR MAINTENANCE REQUIREMENTS.