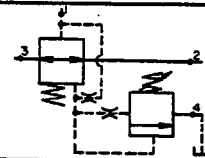


17.5 USGPM Δ 100 PSI
(66,3 LPM Δ 6,9 Bar)

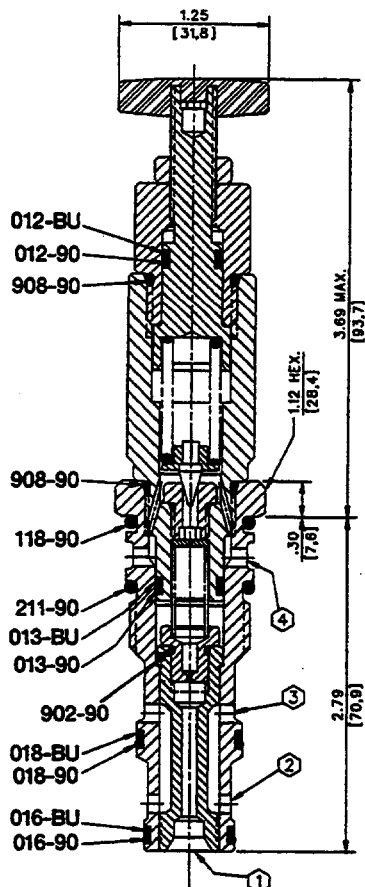
HSUO801-P



Data Sheet

Normally Open External Pilot Sequence Valve

400823HS



Form Tool Cavity
HS-800-4

Line Mount Block
CM1-10-C

Application

The HSUO sequence valve disconnects primary and secondary system branches after the pressure requirement in a third branch is satisfied.

Operation

Pilot pressure must be connected to port 1 to operate the integral relief valve which pilots the sequence valve to block port 2 from 3. Port 1 pressure is ported thru orifices in the center of the valve to the pilot relief valve (in upper portion of the body). When this pressure exceeds this valve setting, pressure on the side of the main spool is relieved, a pressure imbalance then exists across the main spool and port 1 pressure raises the main spool to block flow between ports 2 and 3.

Features

Several pressure ranges are available to choose from. The cartridge is constructed of steel parts and operating parts are hardened and ground as required. Cartridge is designed for easy service or field repair.

Specifications

Rated flow to—17.5 USgpm (66,3 lpm)

Maximum operating pressure—

5000 psi (345 bar)

Adjustable pressure range—See "How To Order"

Viscosity range—27-30 SSU at 100°F

35-2000 SSU at 100°F

Seals—Viton

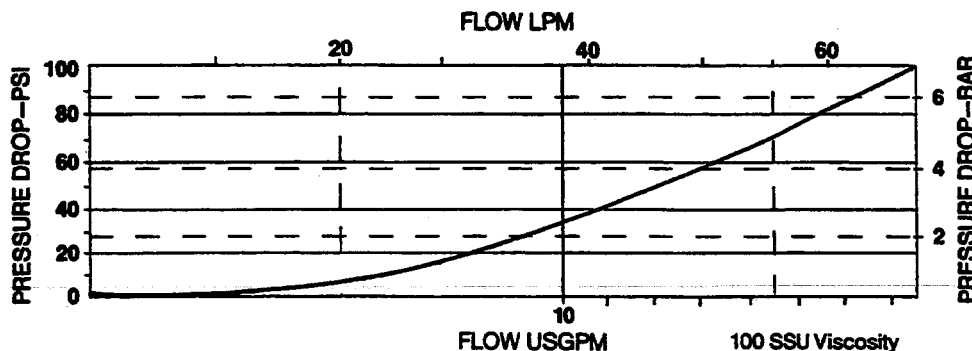
Operating temperature—-40°F to 350°F

(-39,6°C to 175°C)

Filtration—Maintain SAE Class 6, ISO 18/15

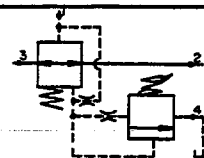
Seal kit—HSSK-800-D

Performance Curve



17.5 USGPM Δ 100 PSI
(66,3 LPM Δ 6,9 Bar)

HSUO801-P

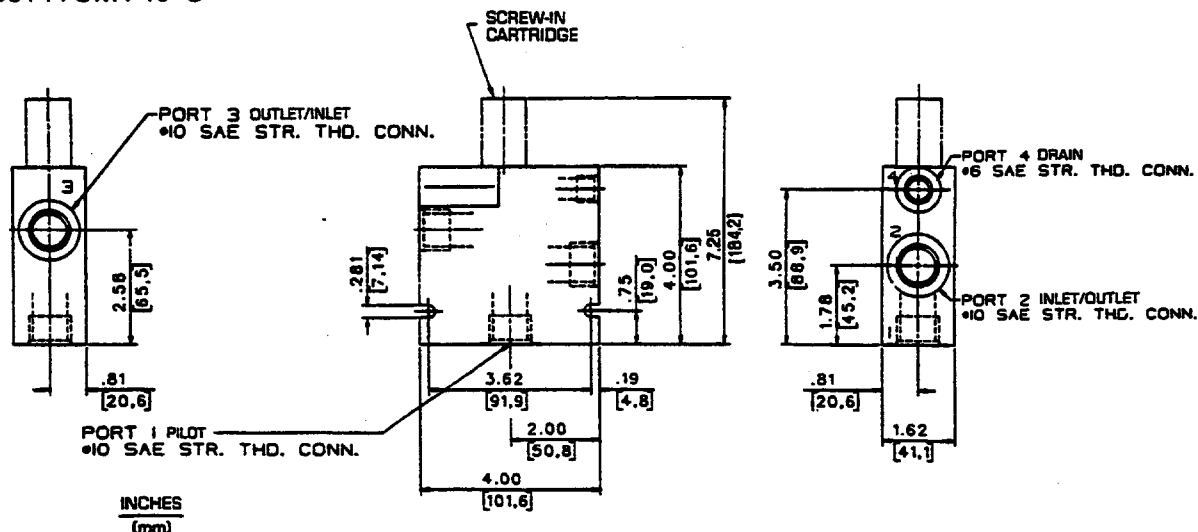


Data Sheet

Normally Open External Pilot Sequence Valve

Line Mount Specifications

HSUO801-P/CM1-10-C



How To Order

Screw-In Cartridge Only

HSUO801-P-_____

	Pressure Range	
	psi	bar
07	50- 700	3,4- 48
20	50-2000	3,4-138
35	50-3500	3,4-241
50	50-5000	3,4-345

Cartridge With Line Mount Block

HSUO801-P-___/CM1-10-C