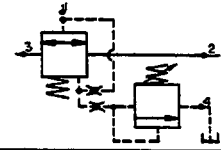


16 USGPM Δ 100 PSI
(60,6 LPM Δ 6,9 Bar)

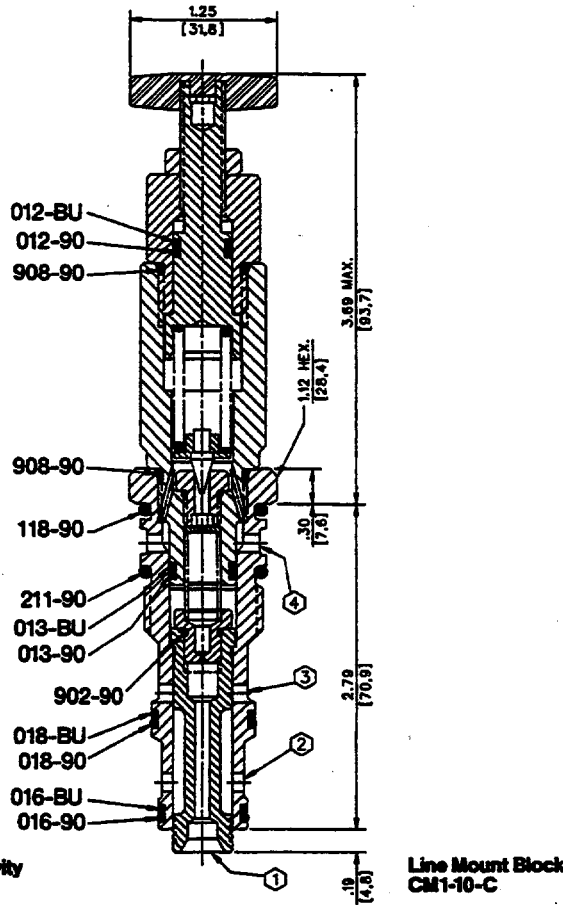
HSU801-P



Data Sheet

Normally Closed External Pilot Sequence Valve

400822HS



Application

The HSU sequence valve connects primary and secondary system branches after the pressure requirement in a third branch is satisfied.

Operation

Pressure must be connected to port 1 to operate the integral relief valve which pilots the sequence valve to connect ports 2 and 3. Port 1 pressure is ported thru orifices in the center of the valve to the pilot relief valve (in upper portion of the body). When this pressure exceeds the valve setting, pressure on the top side of the main spool is relieved, a pressure imbalance then exists across the main spool and port 1 pressure raises the main spool allowing flow between ports 2 and 3.

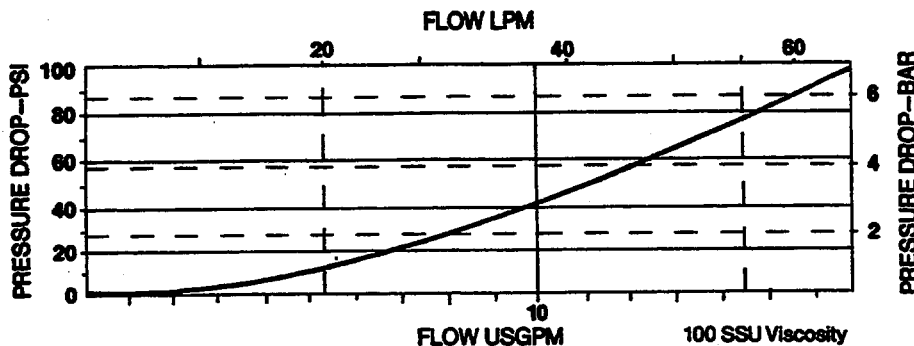
Features

Several pressure ranges are available to choose from. The cartridge is constructed of steel parts and all operating parts are hardened and ground as required. Cartridge is designed for easy service or field repair.

Specifications

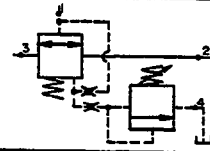
- Rated flow to—16 USgpm (60,6 lpm)
- Maximum operating pressure—5000 psi (345 bar)
- Adjustable pressure range—See "How To Order"
- Viscosity range—27-30 SSU at 100°F
35-2000 SSU at 100°F
- Seals—Viton
- Operating temperature—-40°F to 350°F
(-39,6°C to 175°C)
- Filtration—Maintain SAE Class 6, ISO 18/15
- Seal kit—HSSK-800-D

Performance Curve



16 USGPM Δ 100 PSI
(60,6 LPM Δ 6,9 Bar)

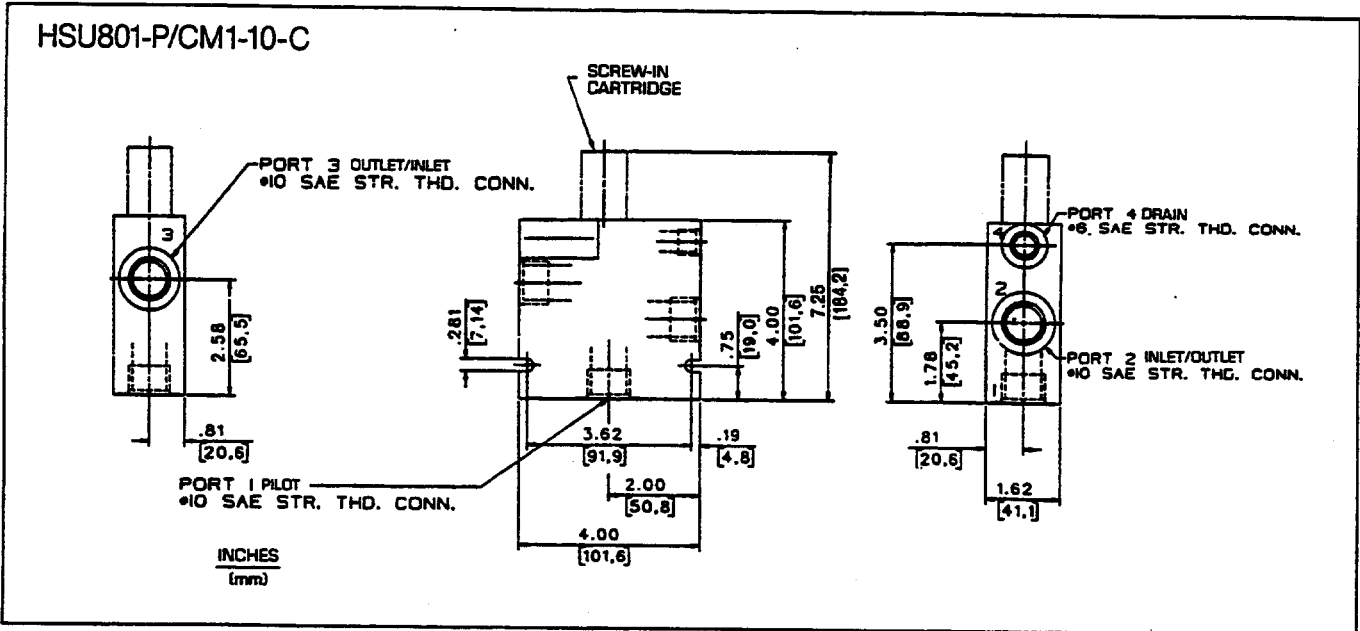
HSU801-P



Data Sheet

Normally Closed External Pilot Sequence Valve

Line Mount Specifications



How To Order

Screw-In Cartridge Only

HSU801-P-

	Pressure Range	
	psi	bar
07	50- 700	3,4- 48
20	50-2000	3,4-138
35	50-3500	3,4-241
50	50-5000	3,4-345

Note: All adjusting screw options on DS 82550-1B are available for this valve.

Cartridge With Line Mount Block

HSU801-P-___/CM1-10-C