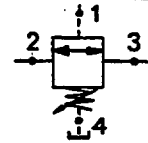


39 USGPM Δ 100 PSI
(147,9 LPM Δ 6,9 Bar)

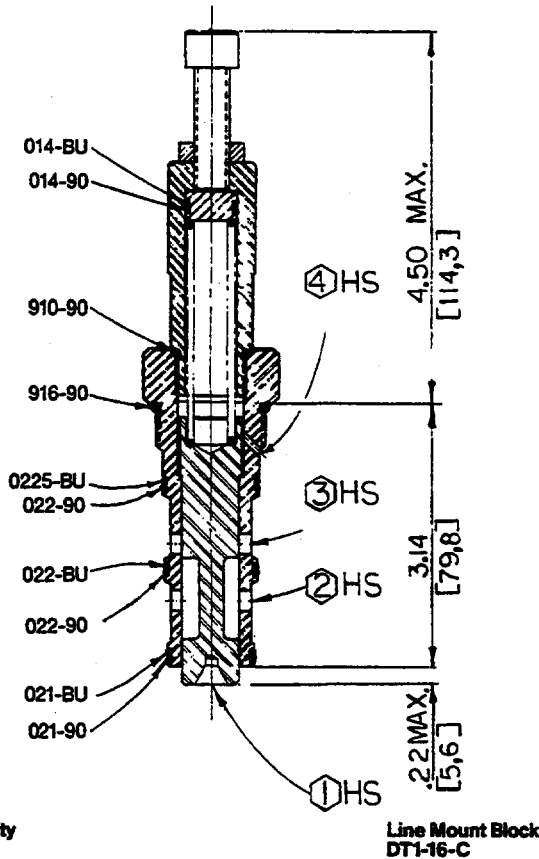
HSU1200-DA



Data Sheet

Direct Acting External Operated N.C. Sequence Valve

400016HS



Form Tool Cavity
HS-1200-4

Line Mount Block
DT1-16-C

Application

The HSU-DA sequence valve connects primary and secondary system branches after the pressure requirements in a third branch has been satisfied. This valve can be circuited to be operated by multiple pressure settings.

Operation

As the pressure at port 1 overcomes the spring resistance it moves the main spool to connect ports 2 and 3. Because the spring chamber is connected (separately) to drain, back pressure at operating ports will not affect the pressure setting.

Features

Direct acting for fast accurate response, several pressure ranges available, constructed of steel parts, operating parts are hardened and ground as required. Cartridge is designed for easy service and field repair.

Specifications

Rated flow to—39 USgpm (147,9 lpm)

Maximum operating pressure—
5000 psi (345 bar)

Adjustable pressure range—See
"How To Order"

Viscosity range—27-30 SSU at 100°F
35-2000 SSU at 100°F

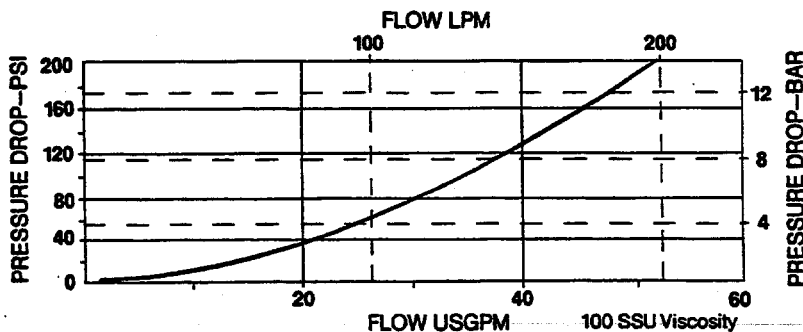
Seals—Viton

Operating temperature—-40°F to 350°F
(-39,6°C to 175°C)

Filtration—Maintain SAE Class 6, ISO 18/15

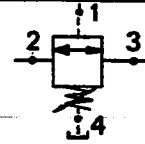
Seal kit—HSSK-1200-D

Performance Curve



39 USGPM Δ 100 PSI
(147,9 LPM Δ 6,9 Bar)

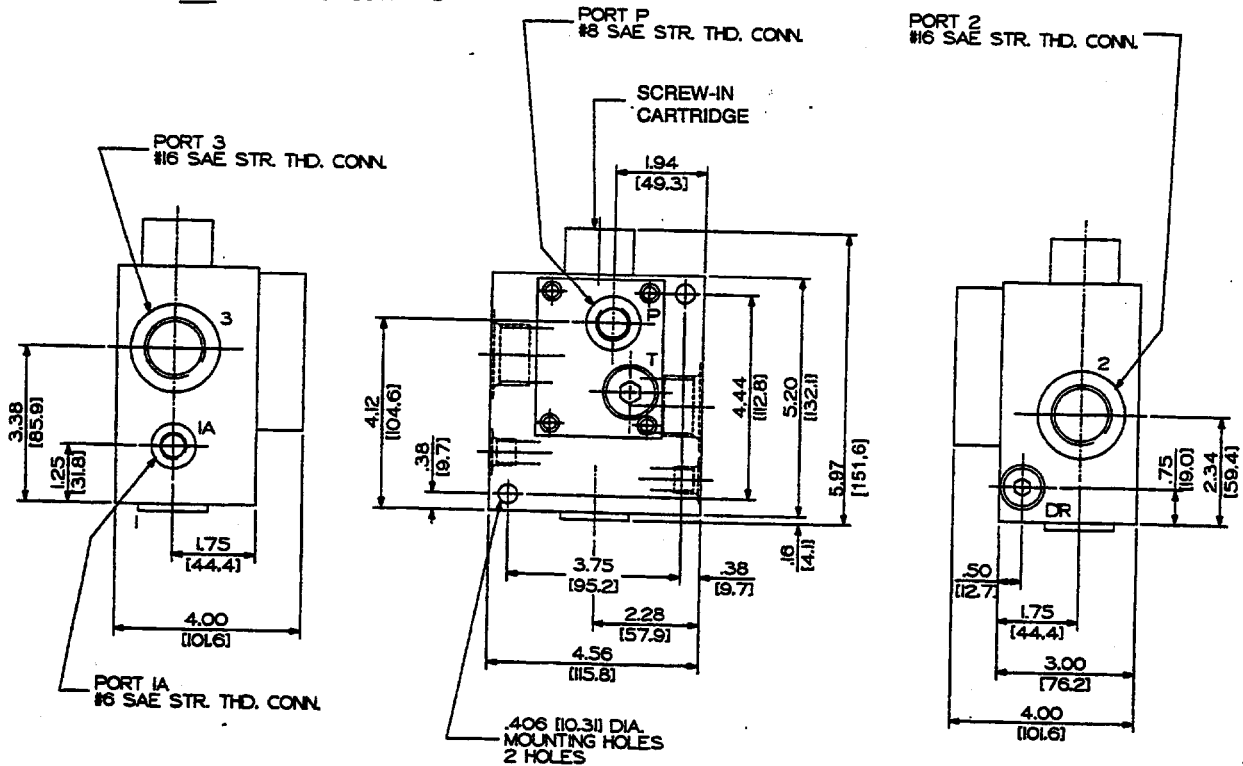
HSU1200-DA



Data Sheet

Direct Acting External Operated N.C. Sequence Valve

HSU1200-DA-_/DT1-16-C/21-C



How To Order

Screw-In Cartridge Only

HSU1200-DA-

	Pressure Range	
	psi	bar
06	25- 60	1,7- 4,1
1	50-100	3,5- 6,9
2	120-200	8,3-13,8
3	185-300	12,8-20,7

Cartridge with Line Mount Block

HSU1200-DA-_/DT1-16-C/21-C