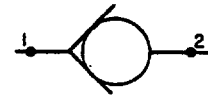


35 USGPM Δ 100 PSI
(132,5 LPM Δ 6,9 Bar)

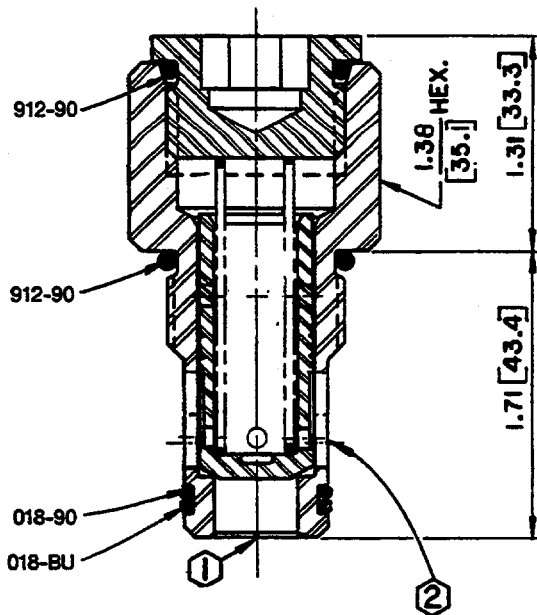
HSC803



Data Sheet

Check Valve

400537HS



Form Tool Cavity
HS-800-2

Line Mount Block
CE1-10-C

Application

The HSC cartridge type check valve allows free flow in one direction but prevents flow in the other. It can be used to separate portions of a circuit, or with a sequence valve to provide a counterbalance valve function.

Operation

Pressure at port 1 forces the poppet off the seat and compresses the spring to allow flow to port 2. Reverse flow (from port 2) works on top of poppet and forces it against the seat to stop flow.

Features

The valve is constructed of steel parts, operating parts are hardened and ground as required. Cartridge is designed for easy service or field repair.

Specifications

Rated flow—35 USgpm Δ 100 psi
(132,5 lpm Δ 6,9 bar)

Maximum operating pressure—
5000 psi (345 bar)

Cracking pressure—See "How To Order"

Maximum leakage at rated pressure—
3 drops per minute

Viscosity range—27-30 SSU at 100°F
35-2000 SSU at 100°F

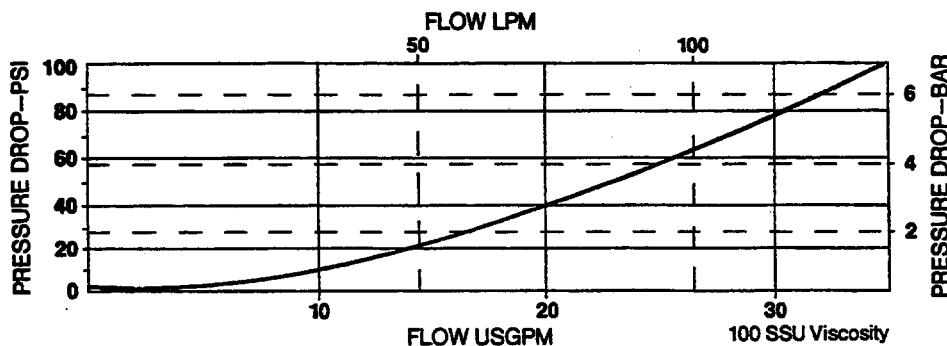
Seals—Viton

Operating temperature—-40°F to 350°F
(-39,6°C to 175°C)

Filtration—Maintain SAE Class 6, ISO 18/15

Seal kit—HSSK-800-A

Performance Curve



Oilgear

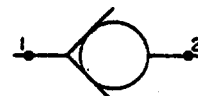
VALVE, SCREW-IN CARTRIDGE

ENGINEERING

2

35 USGPM Δ 100 PSI
(132,5 LPM Δ 6,9 Bar)

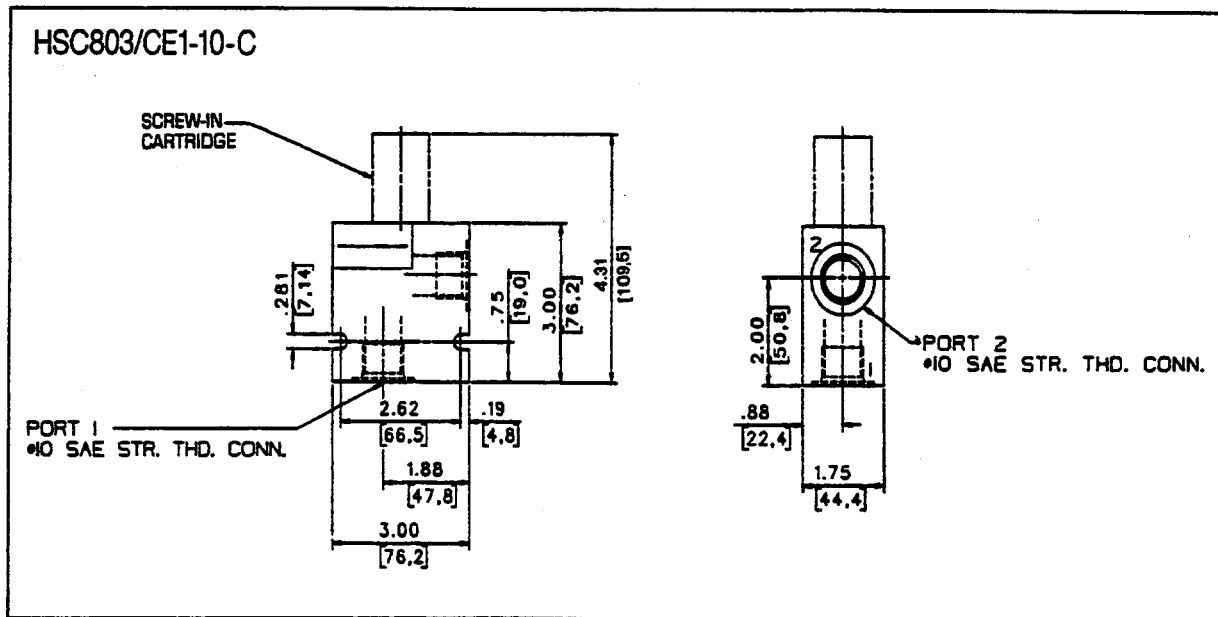
HSC803



Data Sheet

Check Valve

Line Mount Specifications



How To Order

Screw-In Cartridge Only

HSC803-

	Cracking Pressure	
	psi	bar
Blank	5	0,3
35	35	2,4
60	60	4,1

Cartridge With Line Mount Block

HSC803-_/CE1-10-C

Reissued: Nov., 1995

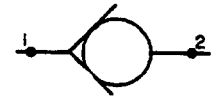
DS 80060-C9.2

OILGEAR
2300 So. 51st. Street
Milwaukee, WI USA 53219

Telephone: (414) 327-1700
Fax: (414) 327-0532

50 USGPM Δ 100 PSI
(189,5 LPM Δ 6,9 Bar)

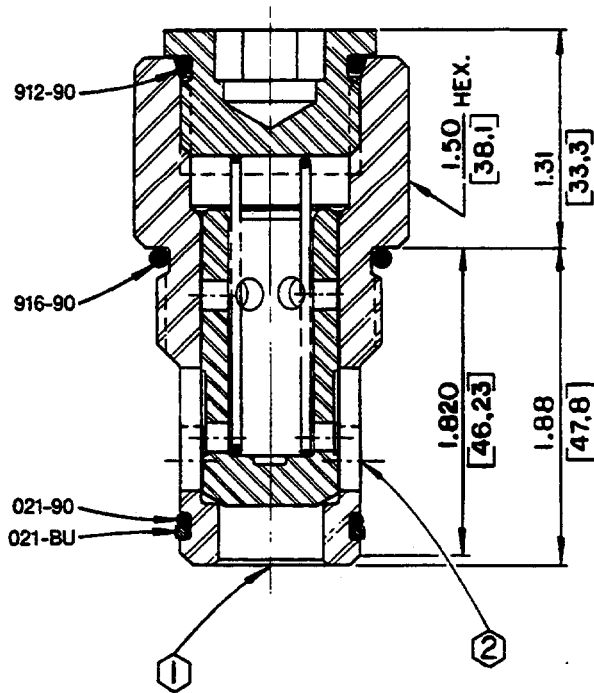
HSC1202



Data Sheet

Check Valve

400520HS



Form Tool Cavity
HS-1200-2

Line Mount Block
DP1-16-C

Application

The HSC cartridge type check valve allows free flow in one direction but prevents flow in the other. It can be used to separate portions of a circuit, or with a sequence valve to provide a counterbalance valve function.

Operation

Pressure at port 1 forces the poppet off the seat and compresses the spring to allow flow to port 2. Reverse flow (from port 2) works on top of poppet and forces it against the seat to stop flow.

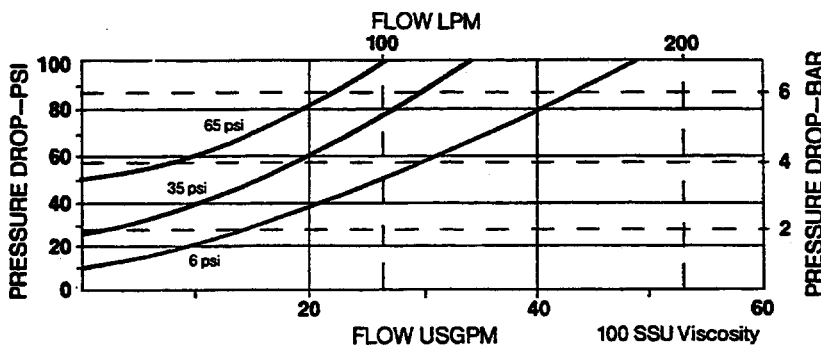
Features

The valve is constructed of steel parts, operating parts are hardened and ground as required. Cartridge is designed for easy service or field repair.

Specifications

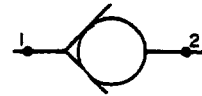
- Rated flow—50 USgpm Δ 100 psi
(189,5 lpm Δ 6,9 bar)
- Maximum operating pressure—
5000 psi (345 bar)
- Cracking pressure—See "How To Order"
- Maximum leakage at rated pressure—
3 drops per minute
- Viscosity range—27-30 SSU at 100°F
35-2000 SSU at 100°C
- Seals—Viton
- Operating temperature—-40°F to 350°F
(-39,6°C to 175°C)
- Filtration—Maintain SAE Class 6, ISO 18/15
- Seal kit—HSSK-1200-A

Performance Curve



50 USGPM Δ 100 PSI
(189,5 LPM Δ 6,9 Bar)

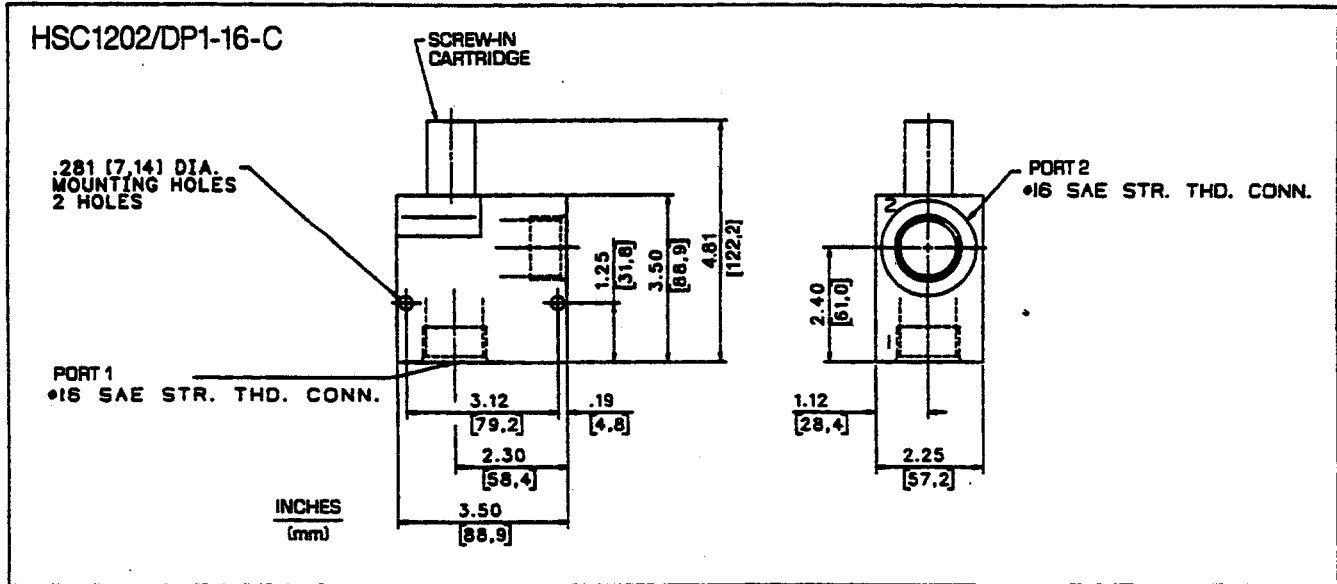
HSC1202



Data Sheet

Check Valve

Line Mount Specifications



How To Order

Screw-In Cartridge Only

HSC1202-

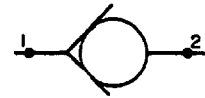
	Cracking Pressure	
	psi	bar
Blank	6	0,4
35	35	2,4
65	65	4,5

Cartridge With Line Mount Block

HSC1202-__ /DP1-16-C

90 USGPM Δ 100 PSI
(341,1 LPM Δ 6,9 Bar)

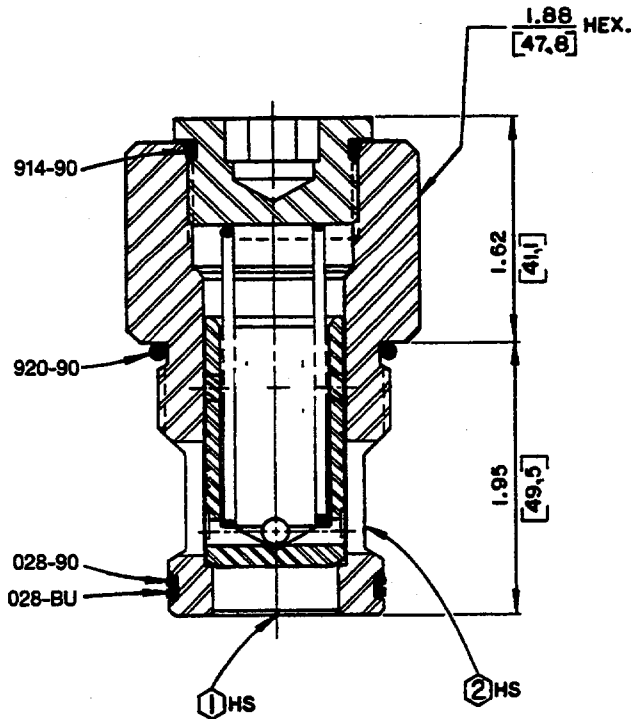
HSC1604



Data Sheet

Check Valve

400541HS



Form Tool Cavity
HS-1600-2

Line Mount Block
3000 psi = EU1-24-C
5000 psi = EU1-66-C

Application

The HSC cartridge type check valve allows free flow in one direction but prevents flow in the other. It can be used to separate portions of a circuit, or with a sequence valve to provide a counterbalance valve function.

Operation

Pressure at port 1 forces the poppet off the seat and compresses the spring to allow flow to port 2. Reverse flow (from port 2) works on top of poppet and forces it against the seat to stop flow.

Features

The valve is constructed of steel parts, operating parts are hardened and ground as required. Cartridge is designed for easy service or field repair.

Specifications

Rated flow—90 USgpm Δ 100 psi
(341,1 lpm Δ 6,9 bar)

Maximum operating pressure—
5000 psi (345 bar)

Cracking pressure—See "How To Order"

Maximum leakage at rated pressure—
3 drops per minute

Viscosity range—27-30 SSU at 100°F
35-2000 SSU at 100°F

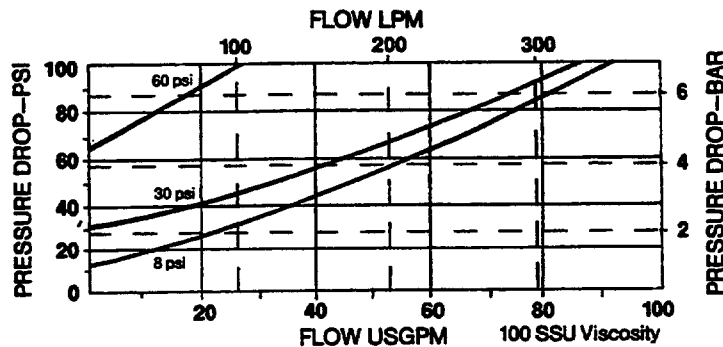
Seals—Viton

Operating temperature—-40°F to 350°F
(-39,6°C to 175°C)

Filtration—Maintain SAE Class 6, ISO 18/15

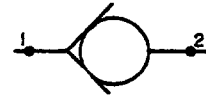
Seal kit—HSSK-1600-A

Performance Curve



90 USGPM Δ 100 PSI
(341,1 LPM Δ 6,9 Bar)

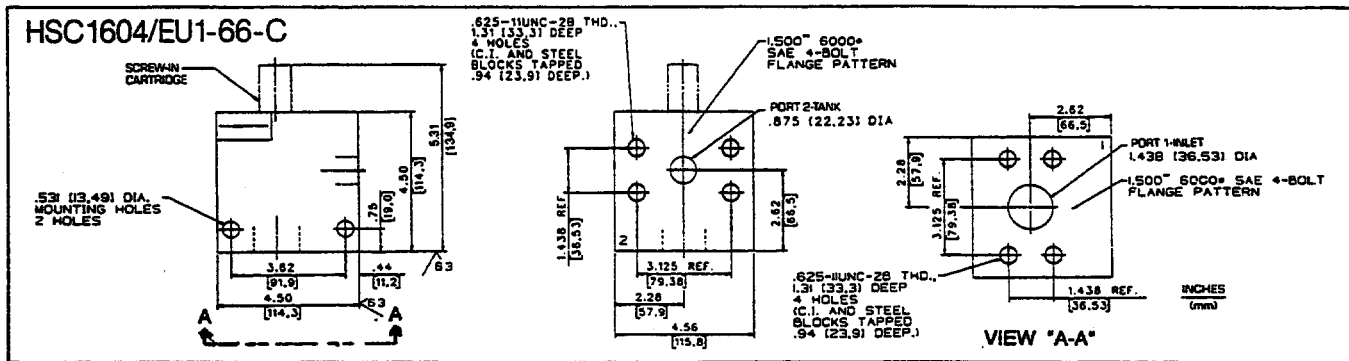
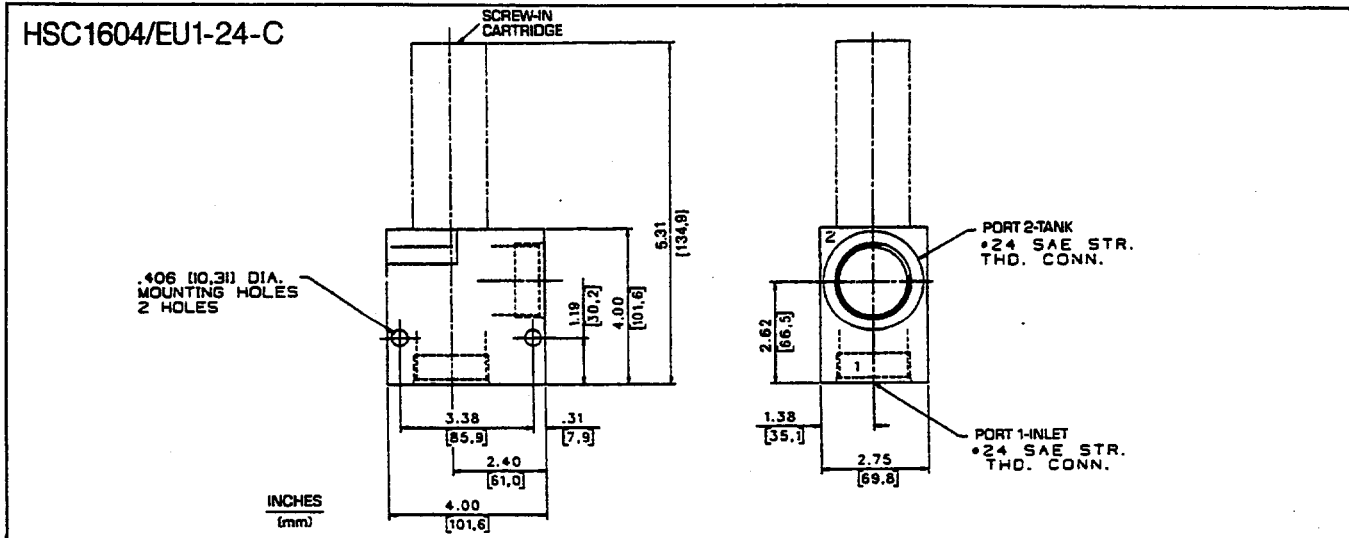
HSC1604



Data Sheet

Check Valve

Line Mount Specifications



How To Order

Screw-In Cartridge Only

HSC1604-___

	Cracking Pressure	
	psi	bar
Blank	8	0,6
30	30	2,1
60	60	4,1

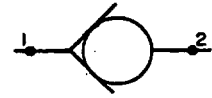
Cartridge With Line Mount Block

3000 psi (207 bar) service pressure
HSC1604-___/EU1-24-C

5000 psi (345 bar) service pressure
HSC1604-___/EU1-66-C

235 USGPM Δ 100 PSI
(890,7 LPM Δ 6,9 Bar)

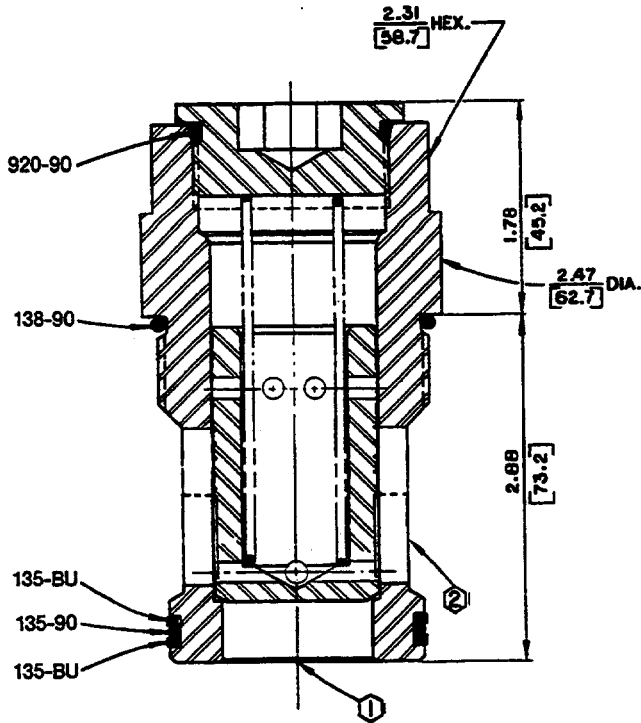
HSC2003



Data Sheet

Check Valve

400540HS



Form Tool Cavity
HS-2000-2

Line Mount Block
3000 psi = FX1-38-C
5000 psi = FX1-68-C

Application

The HSC cartridge type check valve allows free flow in one direction but prevents flow in the other. It can be used to separate portions of a circuit, or with a sequence valve to provide a counterbalance valve function.

Operation

Pressure at port 1 forces the poppet off the seat and compresses the spring to allow flow to port 2. Reverse flow (from port 2) works on top of poppet and forces it against the seat to stop flow.

Features

The valve is constructed of steel parts, operating parts are hardened and ground as required. Cartridge is designed for easy service or field repair.

Specifications

Rated flow—235 USgpm Δ 100 psi
(890,7 lpm Δ 6,9 bar)

Maximum operating pressure—
5000 psi (345 bar)

Cracking pressure—See "How To Order"

Maximum leakage at rated pressure—
3 drops per minute

Viscosity range—27-30 SSU at 100°F
35-2000 SSU at 100°F

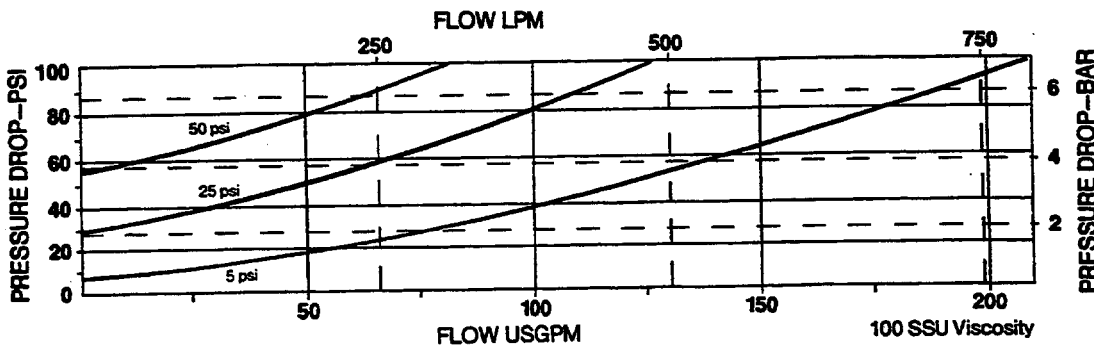
Seals—Viton

Operating temperature—-40°F to 350°F
(-39,6°C to 175°C)

Filtration—Maintain SAE Class 6, ISO 18/15

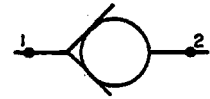
Seal kit—HSSK-2000-A

Performance Curve



235 USGPM Δ 100 PSI
(890,7 LPM Δ 6,9 Bar)

HSC2003

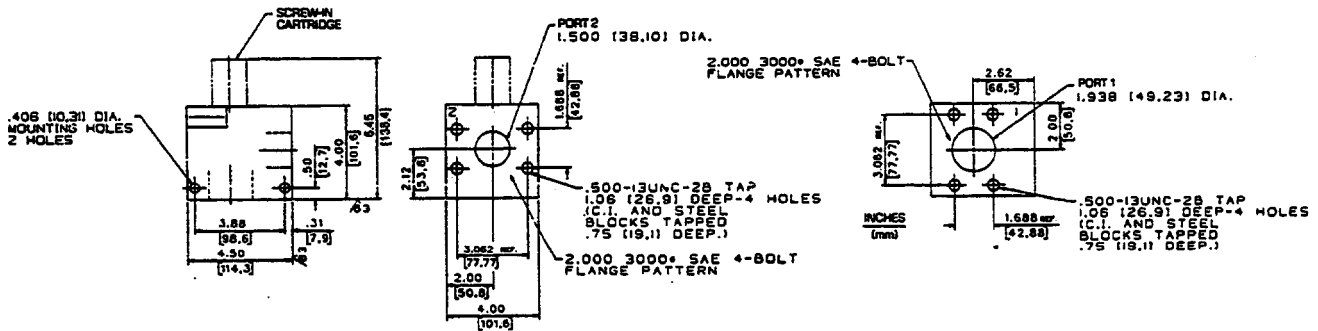


Data Sheet

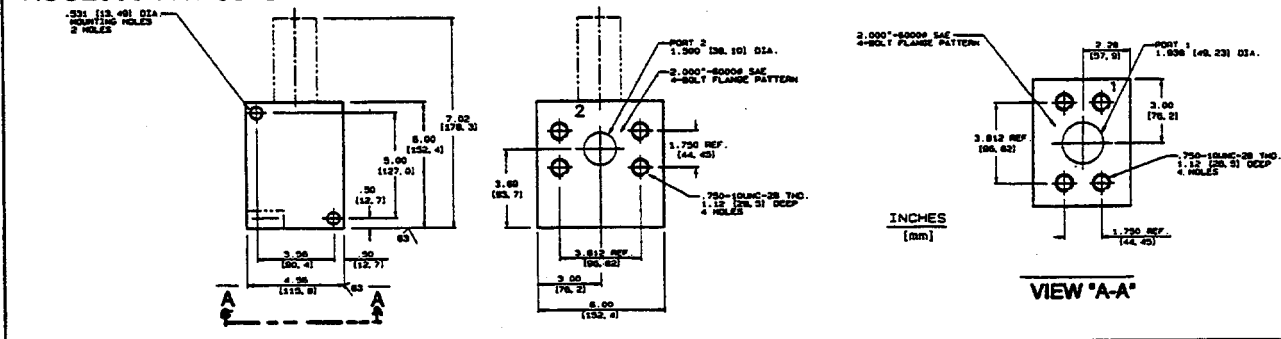
Check Valve

Line Mount Specifications

HSC2003/FX1-38-C



HSC2003/FX1-68-C



How To Order

Screw-In Cartridge Only

HSC2003-

	Cracking Pressure	
	psi	bar
Blank	5	0,3
25	25	1,7
50	50	3,5

Cartridge With Line Mount Block

3000 psi (207 bar) service pressure
HSC2003-___/FX1-38-C

5000 psi (345 bar) service pressure
HSC2003-___/FX1-68-C