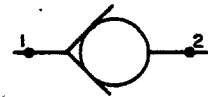


15 USGPM Δ 100 PSI
(56,9 LPM Δ 6,9 Bar)

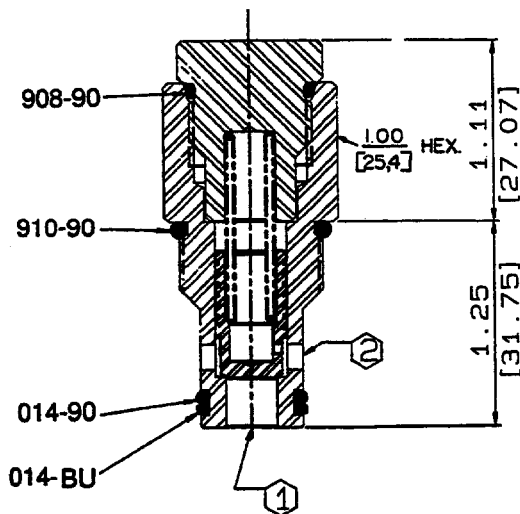
HSC601-P



Data Sheet

Check Valve

400920HS



Form Tool Cavity
HS-600-2

Line Mount Block
BB1-08-C

Application

The HSC cartridge type check valve allows flow in one direction but prevents flow in the other. Several "cracking pressures" springs are available to regulate the pressure at which flow starts. The valve can be used to separate portions of a circuit, or with a sequence valve to provide a counterbalance function.

Operation

Pressure at port 1 forces the poppet off the seat and compresses the spring to allow flow to port 2. Reverse flow (from port 2) or a higher differential pressure, works on top of the poppet and forces it against the seat to stop flow.

Features

Several springs are offered for regulating the cracking pressure. The valve is constructed of steel parts, operating parts are hardened and ground as required. Cartridge is designed for easy service or field repair.

Specifications

Nominal flow

8 psi cracking pressure (15 gpm at 100 psi)
(56,9 lpm at 6,9 bar)

35 psi cracking pressure (15 gpm at 225 psi)
(56,9 lpm at 15,5 bar)

70 psi cracking pressure (15 gpm at 300 psi)
(56,9 lpm at 207 bar)

Maximum operating pressure - 5000 psi (345 bar)

Maximum leakage at rated pressure - 1 drop per minute

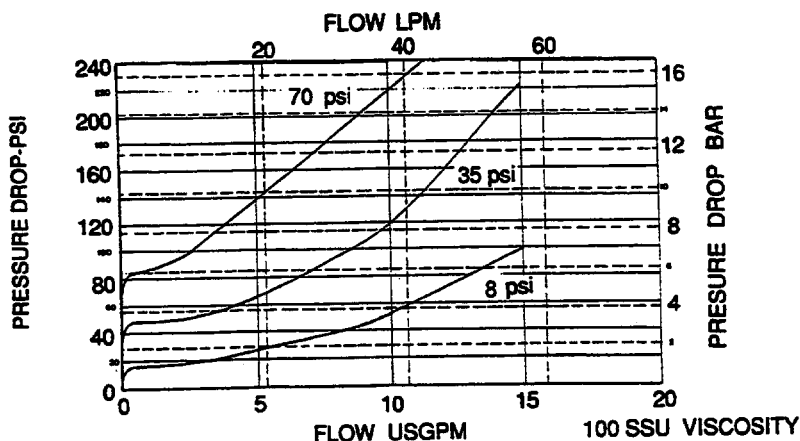
Viscosity Range - 27 -30 SSU at 100° F
35-2000 SSU at 100° F

Seals - Viton

Operating temperature - (-40° F to 350° F)
(-39,6° C to 175° C)

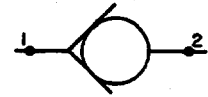
Filtration - Maintain SAE class 6, ISO 18/15
Seal Kit - HSSK-600-AC

Performance Curve



15 USGPM Δ 100 PSI
(56,9 LPM Δ 6,9 Bar)

HSC601-P

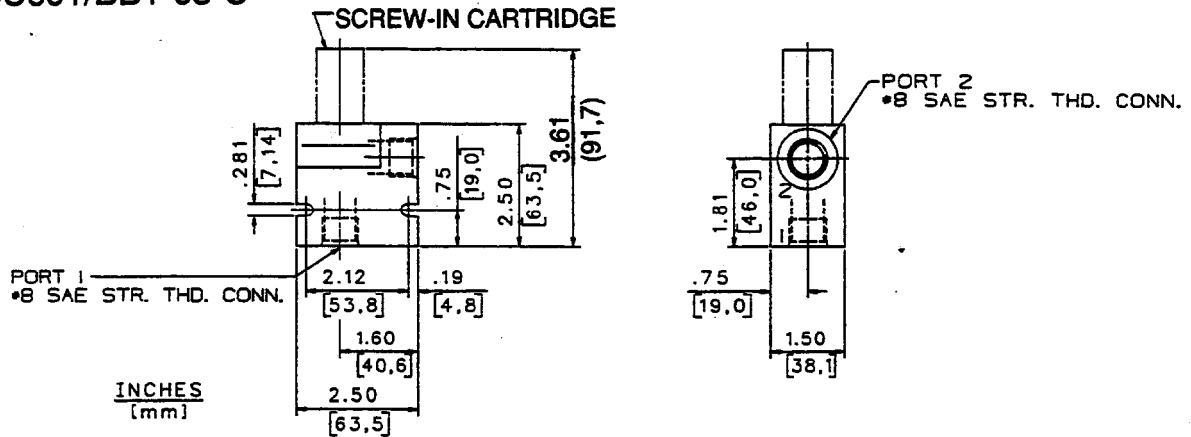


Data Sheet

Check Valve

Line Mounted Specifications

HSC601/BB1-08-C



How To Order

Screw-in Cartridge Only

HSC601-P-

	Cracking Pressure	
	psi	bar
Blank	8	0,6
35	35	2,4
70	70	4,8

Cartridge With Line Mount Block

HSC601-P- /BB1-08-C