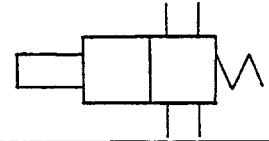


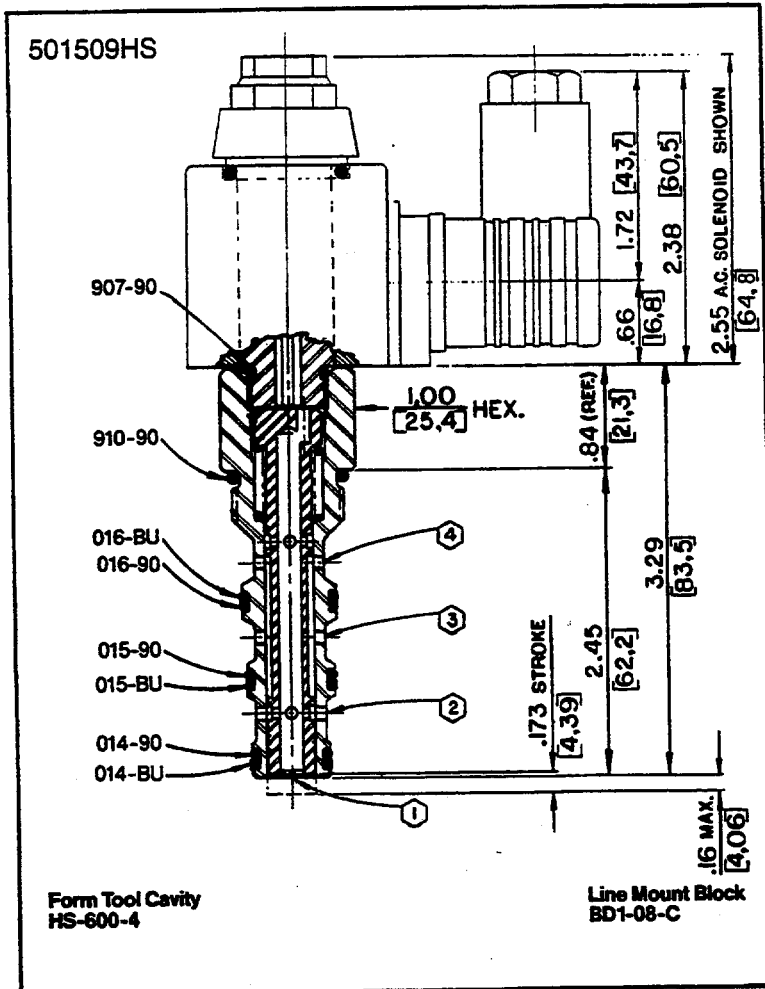
3 USGPM Δ 35 PSI
(11,4 LPM Δ 2,4 Bar)

HS4SV-602



Data Sheet

Four-Way Directional Control Pilot Valve



Application

The HS4SV cartridge valve is used to provide a variety of functions (depending on spool chosen) thru actuation of a variety of operators available.

Operation

The HS4SV valve can be actuated by one of several (electric) solenoids, an air (pneumatic) cylinder, or a knob (manual) operator. The main spool is available in several configurations. The spool is held in its' normal position by a spring. Actuating the operator shifts the spool to open or close flow between various ports. NOTE: port 1 must be connected directly to tank. Deactuating the operator allows the spring to return spool to original position.

Features

Valves are available with several spool configurations (for a variety of functions) and can be actuated by electric, pneumatic, or manual operators. Valves are constructed of steel parts, operating parts are hardened as required and cartridge is designed for easy service or field repair.

Specifications

Maximum flow—3 USgpm Δ 35 psi
(11,4 lpm Δ 2,4 bar)

Maximum operating pressure—
5000 psi (345 bar)

Maximum leakage (port to port)— 40 in³/m
(656 cm³/m)

Viscosity range—27-30 SSU at 100°F
35-3000 SSU at 100°F

Seals—Viton

Operating temperature

Solenoid operators only—-40°F to 140°F
(-39,6°C to 59,4°C)

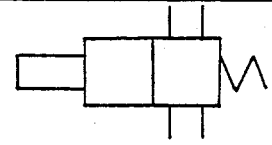
All other operators—-40°F to 350°F
(-39,6°C to 175°C)

Filtration—Maintain SAE Class 5, ISO 17/14

Seal kit—HSSK-600-L

3 USGPM Δ 35 PSI
(11,4 LPM Δ 2,4 Bar)

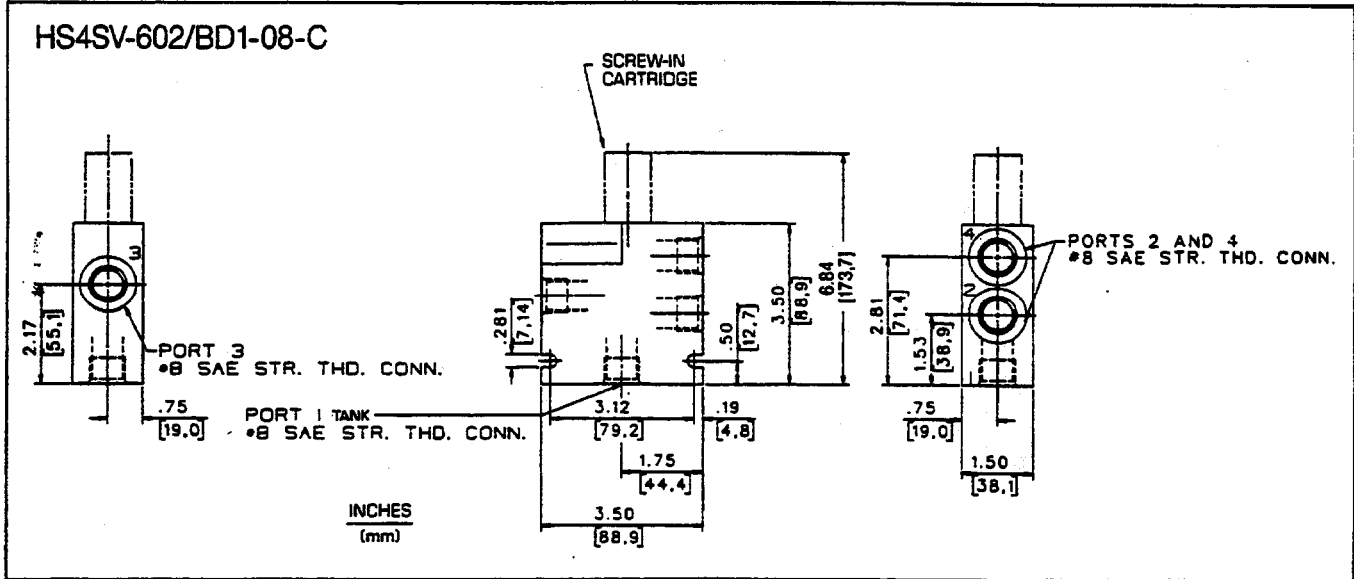
HS4SV-602



Data Sheet

Four-Way Directional Control Pilot Valve

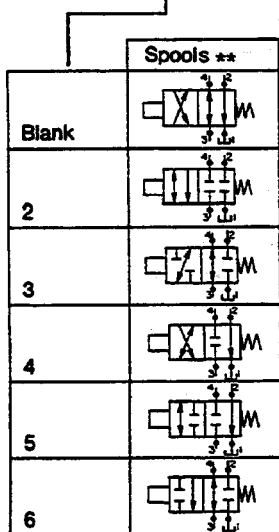
Line Mount Specifications



How To Order

Screw-In Cartridge Only

HS4SV -602- -



Operators	
0	(Standard) 115 VAC/60 Hz or 110 VAC/50 Hz Solenoid
1	230 VAC/60 Hz or 220 VAC/50 Hz Solenoid
2*	12 VDC Solenoid
3*	24 VDC Solenoid
AP*	Air (16 psi to 100 psi)
MAN*	Manual
HP*	Hydraulic Pilot Operator

Accessories	
Blank	None required
MO*	Manual Push Button Solenoid Override
MS*	Manual Screw Lock-In Solenoid Override

Electrical Connectors	
N	None required
S	(Standard) Cable Connector w/o Indicator Light
L	Cable Connector with Indicator Light
R	0.500 NPTF Connector w/o Indicator Light
W	0.500 NPTF Connector with Indicator Light
B*	3-pin Brad-Harrison Connector with Light
C*	3-pin Brad-Harrison Connector w/o Indicator Light

*See DS 80150-1C for details.
** ALL SPOOLS ARE NORMALLY OPEN CROSS OVER

Cartridge With Line Mount Block

HS4SV -602- - - /BD1-08-C