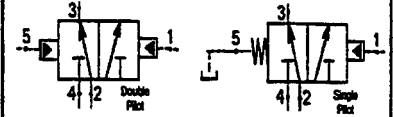


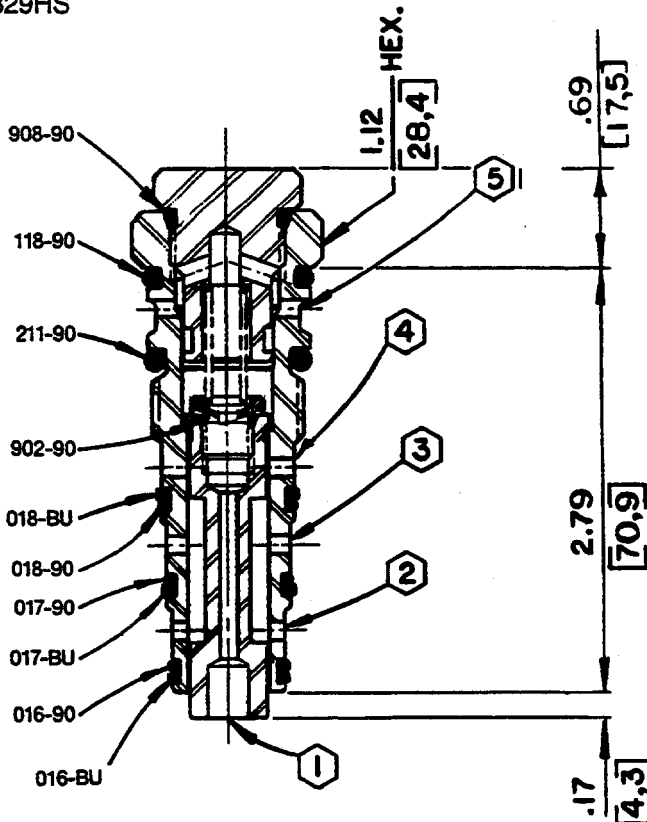
# HS3W800



Data Sheet

Three-Way Directional Control Valve

400329HS



Form Tool Cavity  
HS-800-5

### Application

Pressure selection from either of two sources to a system can be made by actuating this HS3W cartridge valve with a pilot valve.

### Operation

The HS3W valve is available for two-way pilot operation (spring returned) or four-way pilot operation. Electric, pneumatic or manual operated valves can be connected to pilot ports. Normal spool position (from spring force or port 5 pressure) connects port 2 to port 3. Pressure at port 1 (port 5 drained) shifts plunger to connect port 4 to port 3. In the case of four-way or double two-way piloted valves—if equal pressures are applied to ports 1 and 5 at the same time, the larger area on the port 5 end of the spool will tend to move the spool to its normal position. In the case of single piloted valve, port 5 must be connected to drain.

### Features

Valve is constructed of steel parts, all operating parts are hardened and cartridge is designed for easy service or field repair.

### Specifications

- Maximum operating pressure—  
5000 psi (345 bar)
- Maximum pilot pressure (to shift valve)—  
45 psi (3,1 bar)
- Viscosity range—27-30 SSU at 100°F  
35-2000 SSU at 100°F
- Seals—Viton
- Operating temperature—-40°F to 350°F  
(-39,6°C to 175°C)
- Filtration—Maintain SAE Class 5, ISO 17/14
- Seal kit—HSSK-800-U

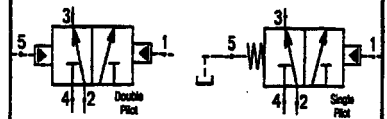
# Oilgear

## VALVE, SCREW-IN CARTRIDGE

ENGINEERING

2

### HS3W800



Data Sheet

Three-Way Directional Control Valve

## How To Order

### Screw-In Cartridge

HS3W800-\_\_\_\_\_

	Pilot
SP	Single Pilot
DP	Double Pilot