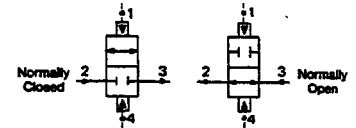


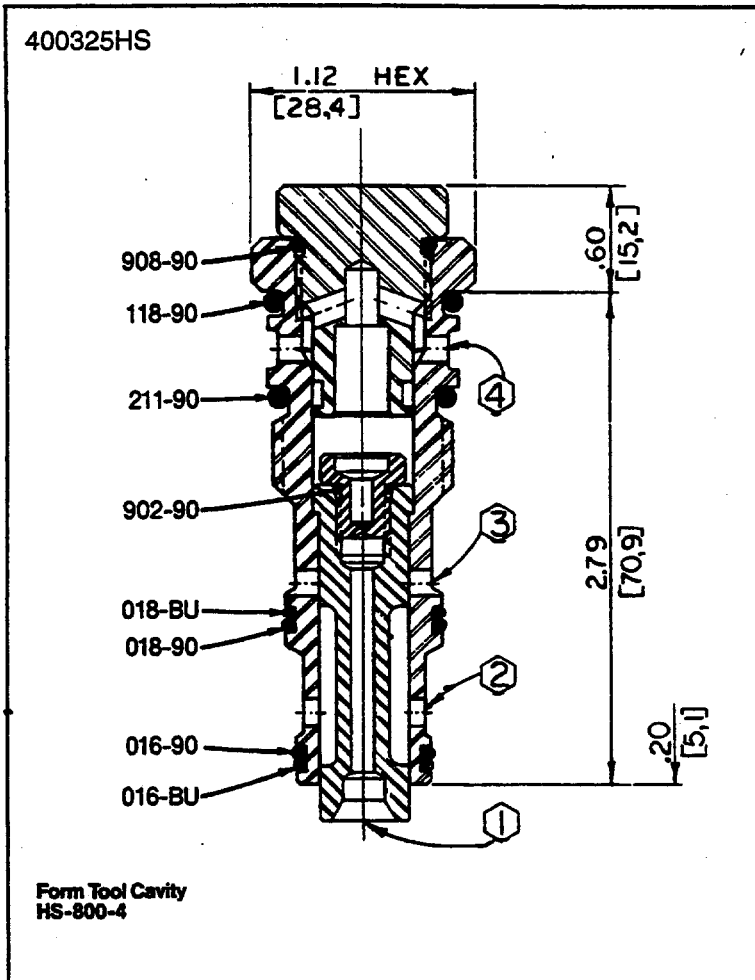
17 USGPM  $\Delta$  100 PSI  
(64,4 LPM  $\Delta$  6,9 Bar)

## HS2W800-DP



### Data Sheet

### Two-Way Dual Pilot Operated Directional Control Valve



### Application

The HS2W cartridge valve is used to allow (open) or block (close) flow, in a single line of a circuit when operated by a pilot valve.

### Operation

The HS2W valve can be pilot operated by connecting ports 1 and 4 to an electric, pneumatic, or manual operated pilot valve. The main spool is available in a normally open or a normally closed configuration. With port 1 drained and pressure at port 4, the spool is held in its normal position. Connecting port 1 to pressure and port 4 to drain shifts the spool to open or close flow between ports 2 and 3. If equal pressures are applied to both ports 1 and 4 at the same time, the larger area on the port 4 end of the spool will tend to move the spool to its normal position.

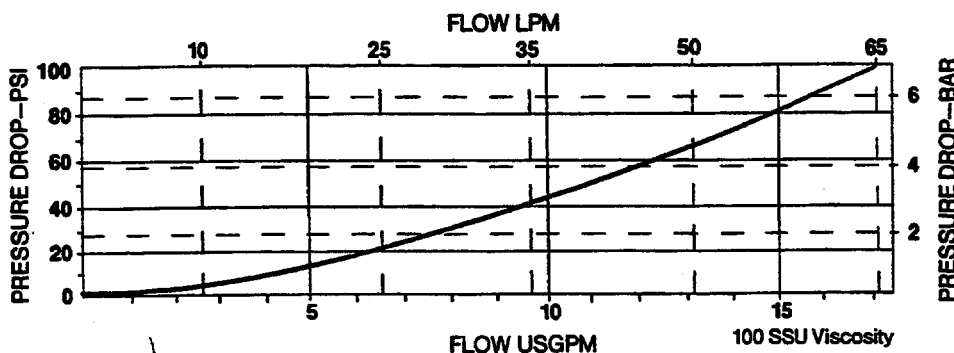
### Features

Normally open or normally closed pilot operated valves are constructed of steel parts, operating parts are hardened and cartridge is designed for easy service or field repair.

### Specifications

- Maximum flow—17 USgpm (64,4 lpm)
- Maximum operating pressure—5000 psi (345 bar)
- Viscosity range—27 to 30 SSU at 100°F  
35 to 2000 SSU at 100°F
- Seals—Viton
- Operating temperature—-40°F to 350°F  
(-39,6°C to 175°C)
- Filtration—Maintain SAE Class 5, ISO 17/14
- Seal kit—HSSK-800-R

### Performance Curve





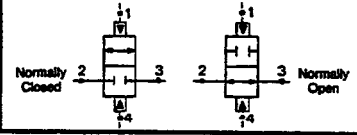
# VALVE, SCREW-IN CARTRIDGE

ENGINEERING

2

17 USGPM  $\Delta$  100 PSI  
(64,4 LPM  $\Delta$  6,9 Bar)

## HS2W800-DP



Data Sheet

Two-Way Dual Pilot Operated Directional Control Valve

## How To Order

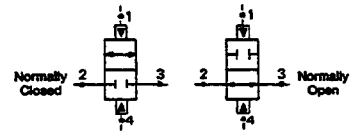
### Screw-In Cartridge Only

HS2W 800-DP

	Spool Function
O	Normally Open
C	Normally Closed

35 USGPM  $\Delta$  100 PSI  
(132,5 LPM  $\Delta$  6,9 Bar)

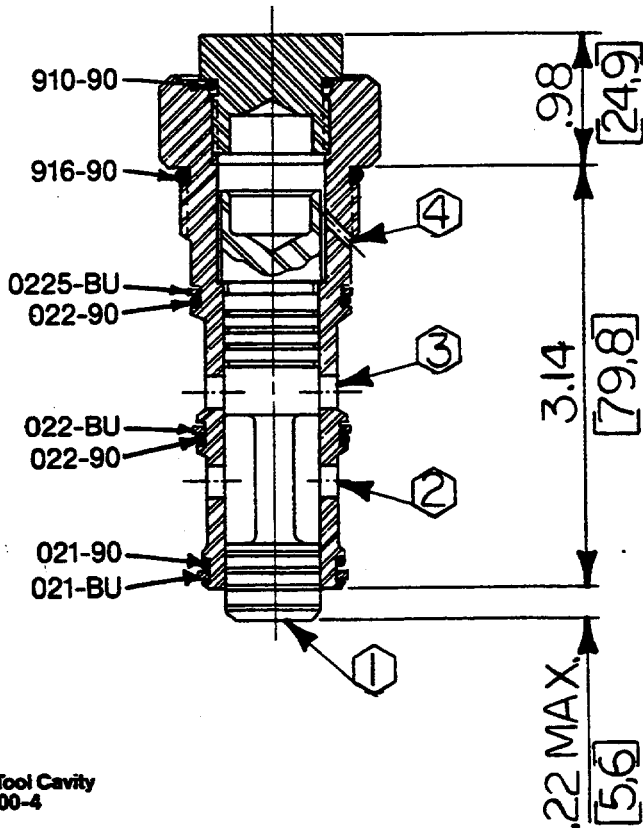
### HS2W1200-DP



#### Data Sheet

#### Two-Way Dual Pilot Operated Directional Control Valve

400272HS



Form Tool Cavity  
HS-1200-4

#### Application

The HS2W cartridge valve is used to allow (open) or block (close) flow, in a single line of a circuit when operated by a pilot valve.

#### Operation

The HS2W valve can be pilot operated by connecting ports 1 and 4 to an electric, pneumatic, or manual operated pilot valve. The main spool is available in a normally open or a normally closed configuration. With port 1 drained and pressure at port 4, the spool is held in its normal position. Connecting port 1 to pressure and port 4 to drain shifts the spool to open or close flow between ports 2 and 3. If equal pressures are applied to both ports 1 and 4 at the same time, the larger area on the port 4 end of the spool will tend to move the spool to its normal position.

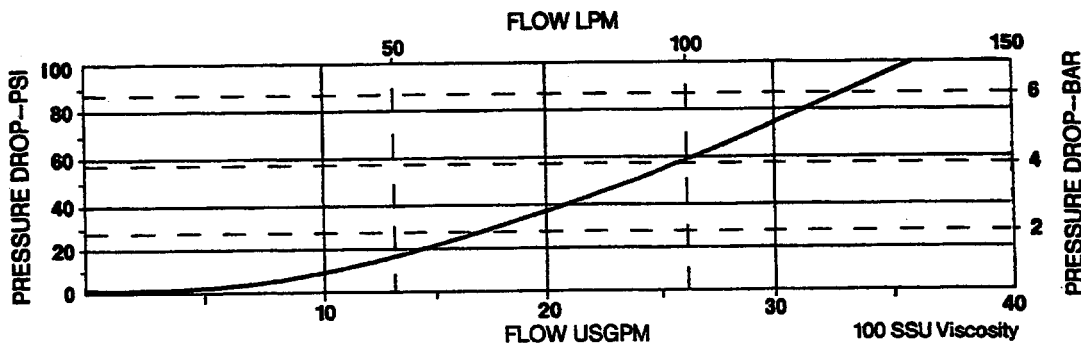
#### Features

Normally open or normally closed pilot operated valves are constructed of steel parts, operating parts are hardened and cartridge is designed for easy service or field repair.

#### Specifications

- Maximum flow—35 USgpm (132,5 lpm)
- Maximum operating pressure—5000 psi (345 bar)
- Viscosity range—27 to 30 SSU at 100°F  
35 to 2000 SSU at 100°C
- Seals—Viton
- Operating temperature—-40°F to 350°F  
(-39,6°C to 175°C)
- Filtration—Maintain SAE Class 5, ISO 17/14
- Seal kit—HSSK-1200-D

#### Performance Curve





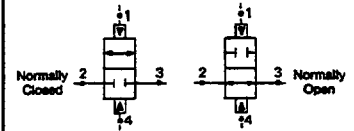
# VALVE, SCREW-IN CARTRIDGE

ENGINEERING

2

35 USGPM  $\Delta$  100 PSI  
(132,5 LPM  $\Delta$  6,9 Bar)

## HS2W1200-DP



Data Sheet

### Two-Way Dual Pilot Operated Directional Control Valve

## How To Order

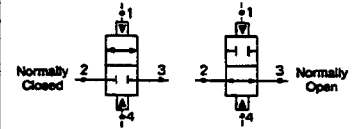
### Screw-In Cartridge Only

HS2W 1200-DP

Spool Function	
O	Normally Open
C	Normally Closed

80 USGPM  $\Delta$  100 PSI  
(303,2 LPM  $\Delta$  6,9 Bar)

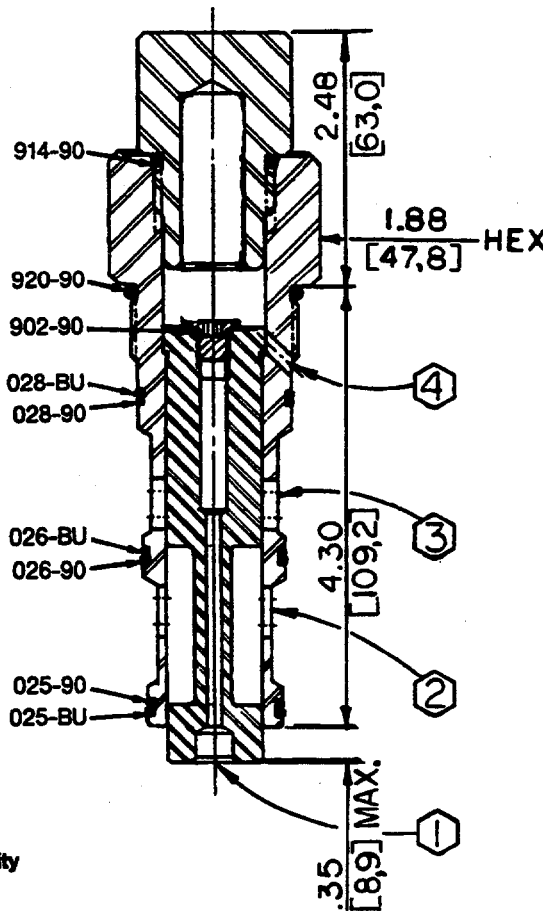
### HS2W1600-DP



#### Data Sheet

#### Two-Way Dual Pilot Operated Directional Control Valve

400327HS



Form Tool Cavity  
HS-1600-4

#### Application

The HS2W cartridge valve is used to allow (open) or block (close) flow, in a single line of a circuit when operated by a pilot valve.

#### Operation

The HS2W valve can be pilot operated by connecting ports 1 and 4 to an electric, pneumatic, or manual operated pilot valve. The main spool is available in a normally open or a normally closed configuration. With port 1 drained and pressure at port 4, the spool is held in its normal position. Connecting port 1 to pressure and port 4 to drain shifts the spool to open or close flow between ports 2 and 3. If equal pressures are applied to both ports 1 and 4 at the same time, the larger area on the port 4 end of the spool will tend to move the spool to its normal position.

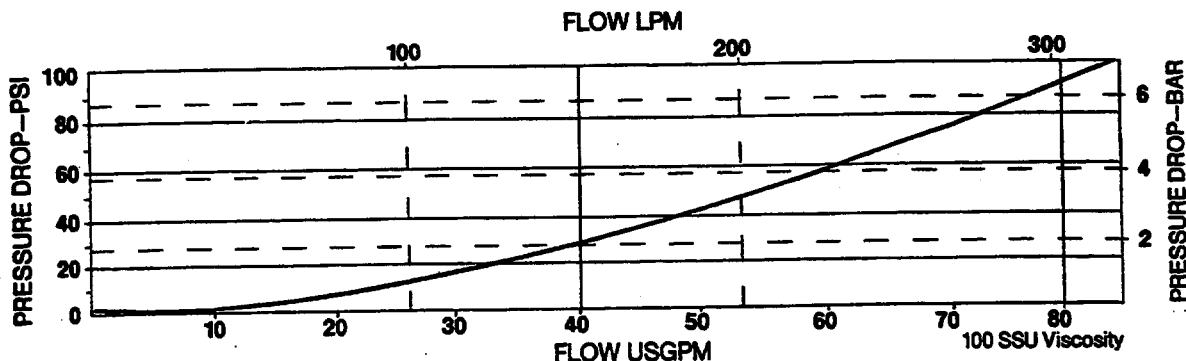
#### Features

Normally open or normally closed pilot operated valves are constructed of steel parts, operating parts are hardened and cartridge is designed for easy service or field repair.

#### Specifications

- Maximum flow—80 USgpm (303,2 lpm)
- Maximum operating pressure—5000 psi (345 bar)
- Viscosity range—27 to 30 SSU at 100°F  
35 to 2000 SSU at 100°F
- Seals—Viton
- Operating temperature—-40°F to 350°F  
(-39,6°C to 175°C)
- Filtration—Maintain SAE Class 5, ISO 17/14
- Seal kit—HSSK-1600-D

#### Performance Curve



# Oilgear

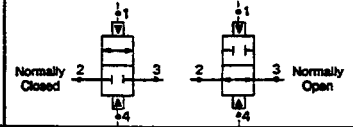
## VALVE, SCREW-IN CARTRIDGE

ENGINEERING

2

80 USGPM  $\Delta$  100 PSI  
(303,2 LPM  $\Delta$  6,9 Bar)

### HS2W1600-DP



Data Sheet

Two-Way Dual Pilot Operated Directional Control Valve

## How To Order

### Screw-In Cartridge Only

HS2W 1600-DP

Spool Function	
O	Normally Open
C	Normally Closed

Reissued: Nov., 1995

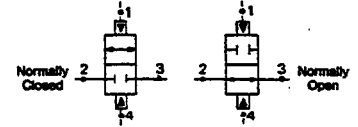
DS 80252-C5.3

OILGEAR  
2300 So. 51st. Street  
Milwaukee, WI USA 53219

Telephone: (414) 327-1700  
Fax: (414) 327-0532

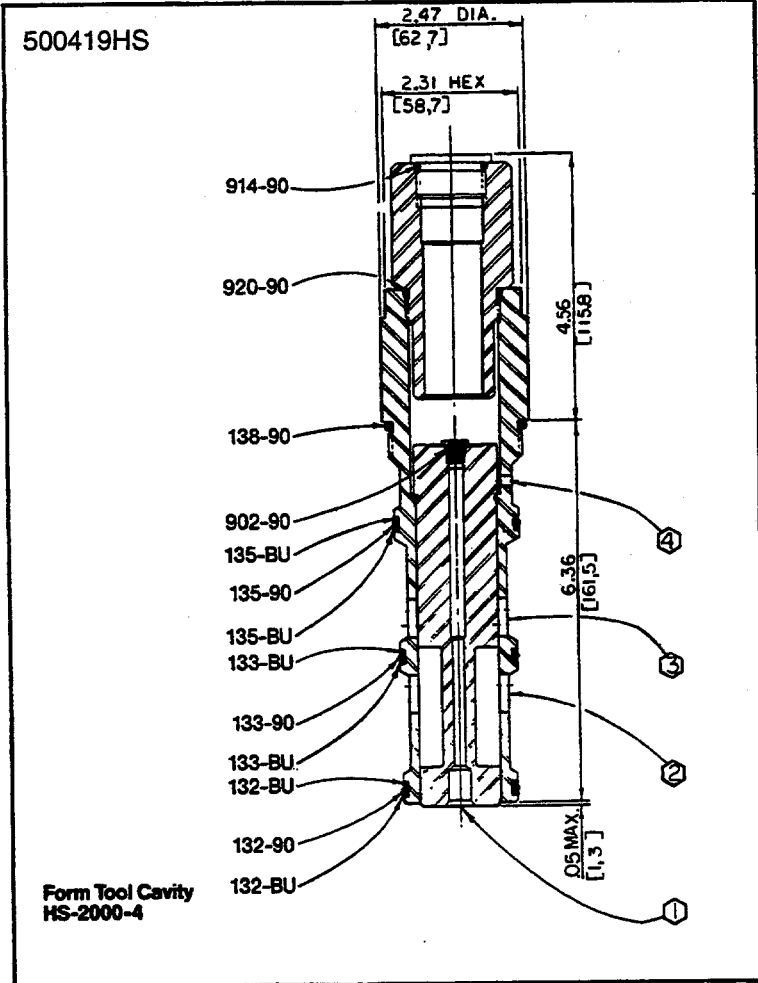
175 USGPM  $\Delta$  100 PSI  
(663,3 LPM  $\Delta$  6,9 Bar)

### HS2W2000-DP



#### Data Sheet

#### Two-Way Dual Pilot Operated Directional Control Valve



#### Application

The HS2W cartridge valve is used to allow (open) or block (close) flow, in a single line of a circuit when operated by a pilot valve.

#### Operation

The HS2W valve can be pilot operated by connecting ports 1 and 4 to an electric, pneumatic, or manual operated pilot valve. The main spool is available in a normally open or a normally closed configuration. With port 1 drained and pressure at port 4, the spool is held in its normal position. Connecting port 1 to pressure and port 4 to drain shifts the spool to open or close flow between ports 2 and 3. If equal pressures are applied to both ports 1 and 4 at the same time, the larger area on the port 4 end of the spool will tend to move the spool to its normal position.

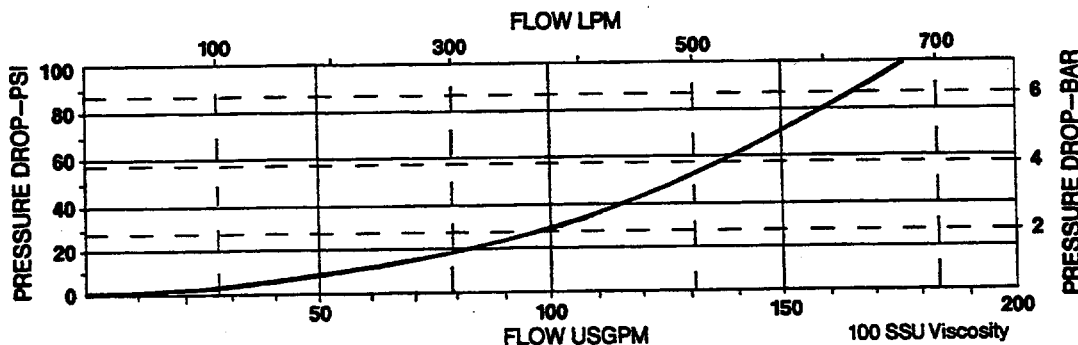
#### Features

Normally open or normally closed pilot operated valves are constructed of steel parts, operating parts are hardened and cartridge is designed for easy service or field repair.

#### Specifications

- Maximum flow—175 USgpm (663,3 lpm)
- Maximum operating pressure—5000 psi (345 bar)
- Viscosity range—27 to 30 SSU at 100°F  
35 to 2000 SSU at 100°F
- Seals—Viton
- Operating temperature—-40°F to 350°F  
(-39,6°C to 175°C)
- Filtration—Maintain SAE Class 5, ISO 17/14
- Seal kit—HSSK-2000-D

#### Performance Curve





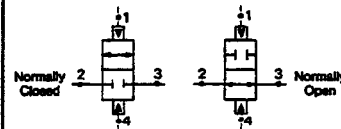
# VALVE, SCREW-IN CARTRIDGE

ENGINEERING

2

175 USGPM  $\Delta$  100 PSI  
(663,3 LPM  $\Delta$  6,9 Bar)

## HS2W2000-DP



Data Sheet

Two-Way Dual Pilot Operated Directional Control Valve

## How To Order

### Screw-In Cartridge Only

HS2W\_2000-DP

	Spool Function
O	Normally Open
C	Normally Closed