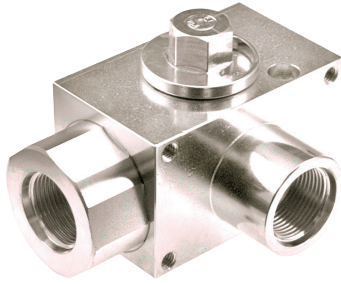
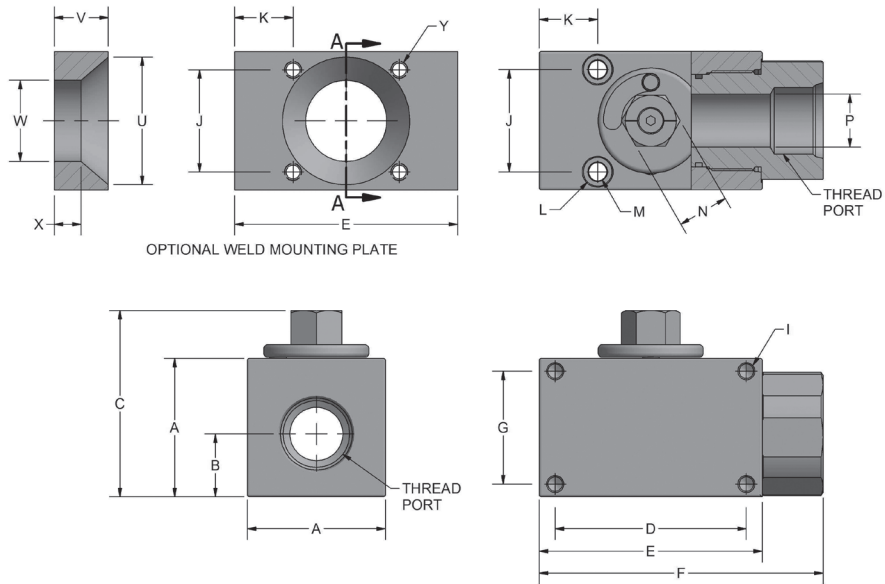


# AV3 Series - Three-Way Excavator Style



- Carbon Steel with Zinc Chromate Plating (RoHS Compliant)
- Hex stem eliminates need for attached handle
- No handle available for this series
- Detented stop washer prevents accidental actuation
- Mounting holes standard
- Max pressure of 5075 PSI on all sizes
- Optional weld mounting plates sold separately



\*Weld Plate Mounting Pattern Matches "J" Dimension (Top of Valve)

AV3 SERIES																		
NPT	SAE	A	A1	B	C	D	E	F	G	H	I	J	K	L	M	N	P	WEIGHT
AV3LN1/2	AV3LS#8	1.77	2.62	0.79	2.74	2.52	3.15	4.07	1.30	2.46	M8 X 1.25	1.26	0.91	0.41	0.25	0.75	0.51	3.0 LBS
AV3LN3/4	AV3LS#12	2.17	3.35	0.92	2.89	3.15	3.98	5.10	1.69	3.05	M8 X 1.25	1.57	1.00	0.53	0.32	0.94	0.79	5.5 LBS
AV3LN1	AV3LS#16	2.56	3.84	1.16	3.29	3.54	4.13	5.26	2.09	3.44	M8 X 1.25	1.89	1.08	0.53	0.32	0.94	0.98	7.9 LBS
AV3LN1-1/4R	AV3LS#20R	2.56	3.90	1.16	3.29	3.54	4.13	5.26	2.09	3.44	M8 X 1.25	1.89	1.08	0.53	0.32	0.94	0.98	7.7 LBS
AV3LN1-1/4	AV3LS#20	3.15	4.65	1.32	3.88	3.39	4.13	5.26	2.52	4.07	M8 X 1.25	2.36	0.96	0.53	0.32	1.26	1.26	11.7 LBS

WELD MOUNTING PLATES							
PART #	VALVE SIZE	U	V	W	X	Y	KIT INCLUDED SHCS
*WP-AV#8U	1/2"	N/A	1.00	N/A	N/A	M6 X 1.00	M6 X 50 MM
WP-AV#12U	3/4"	1.97	1.00	1.50	.50	5/16-18 UNC-2B	5/16 X 2.25"
WP-AV#16U	1" & 1 1/4" REDUCED	2.36	1.00	1.50	.50	5/16-18 UNC-2B	5/16 X 2.75"
WP-AV#20U	1 1/4" FULL	2.86	1.00	1.50	.50	5/16-18 UNC-2B	5/16 X 3.25"



# AV3 Series - Three-Way Excavator Style

## Model Code Breakdown

AV3L N1/2 \_ - 1 1 D V

**VALVE SERIES**

**CONNECTION TYPE/SIZE**

N	NPT Pipe Thread
S	SAE Straight Thread

**BORE RESTRICTION**

blank	Unrestricted Bore
R	Restricted Bore

**BODY & ADAPTER MATERIAL**

1	Carbon Steel
---	--------------

**ADAPTER & STEM SEALS**

V	Viton (Standard)
---	------------------

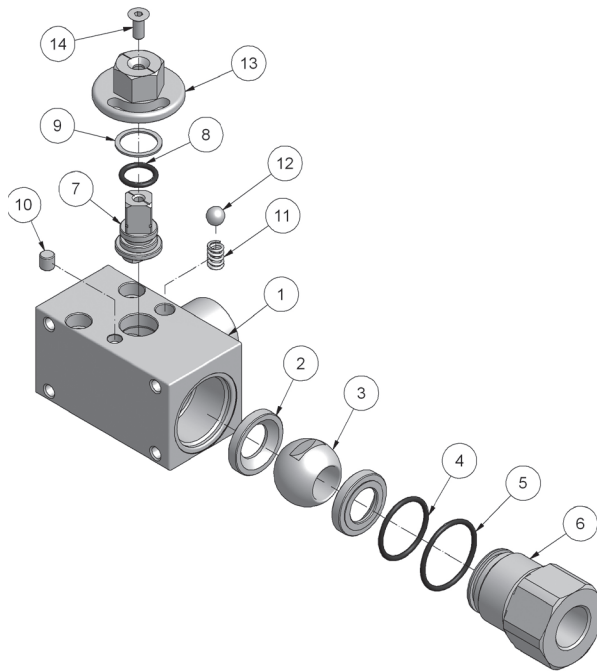
**BALL & STEM SEATS**

D	POM
---	-----

**BALL & STEM MATERIAL**

1	Carbon Steel
---	--------------

Please consult your system's seal manufacturer for recommendation of seal selection, as Anchor Fluid Power does not accept responsibility for seal selection.



Parts List		
ITEM	QTY	PART NUMBER
1	1	AV3 Valve Body
2	2	Ball Seats
3	1	Ball
4	1	Adapter O-Ring (Small)
5	1	Adapter O-Ring (Large)
6	1	Adapter
7	1	Stem
8	1	Stem O-Ring
9	1	Stem Seat
10	1	Stop Pin
11	1	Spring
12	1	Detent Ball
13	1	Alignment Stop
14	1	Screw