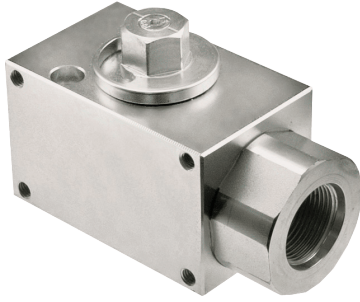
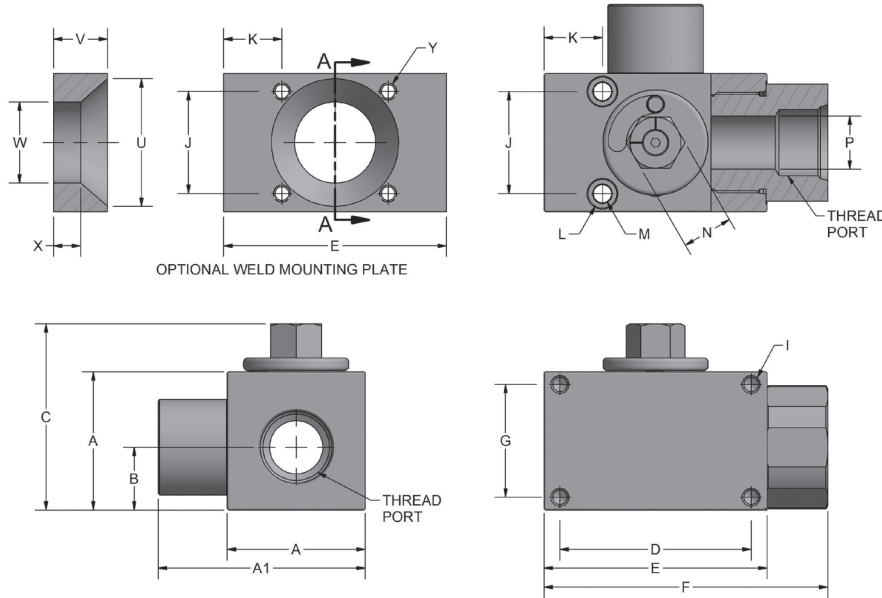


AV2 Series - Two-Way Excavator Style



- Carbon Steel with Zinc Chromate Plating (RoHS Compliant)
- Hex stem eliminates need for attached handle
- Detented stop washer prevents accidental actuation
- Mounting holes standard
- Max pressure of 7250 PSI on all sizes
- No handle available for this series
- Optional weld mounting plates sold separately



*Weld Plate Mounting Pattern Matches "J" Dimension (Top of Valve)

AV2 SERIES																
NPT	SAE	A	B	C	D	E	F	G	I	J	K	L	M	N	P	WEIGHT
AV2N1/2	AV2S#8	1.77	0.79	2.46	2.52	3.15	4.07	1.30	M8 X 1.25	1.26	0.91	0.41	0.25	0.75	0.51	2.9 LBS
AV2N3/4	AV2S#12	2.17	0.92	3.05	3.15	3.98	5.10	1.69	M8 X 1.25	1.57	1.00	0.53	0.32	0.94	0.79	5.3 LBS
AV2N1	AV2S#16	2.56	1.16	3.44	3.54	4.13	5.26	2.09	M8 X 1.25	1.89	1.08	0.53	0.32	0.94	0.98	7.6 LBS
AV2N1-1/4R	AV2S#20R	2.56	1.16	3.44	3.54	4.13	5.26	2.09	M8 X 1.25	1.89	1.08	0.53	0.32	0.94	0.98	7.2 LBS
AV2N1-1/4	AV2S#20	3.15	1.32	4.07	3.39	4.13	5.26	2.52	M8 X 1.25	2.36	0.96	0.53	0.32	1.26	1.26	11.0 LBS

WELD MOUNTING PLATES							
PART #	VALVE SIZE	U	V	W	X	Y	KIT INCLUDED SHCS
*WP-AV#8U	1/2"	N/A	1.00	N/A	N/A	M6 X 1.00	M6 X 50 MM
WP-AV#12U	3/4"	1.97	1.00	1.50	.50	5/16-18 UNC-2B	5/16 X 2.25"
WP-AV#16U	1" & 1 1/4" REDUCED	2.36	1.00	1.50	.50	5/16-18 UNC-2B	5/16 X 2.75"
WP-AV#20U	1 1/4" FULL	2.86	1.00	1.50	.50	5/16-18 UNC-2B	5/16 X 3.25"

*No internal weld hole on this size weld plate



AV2 Series - Two-Way Block Body Threaded

Model Code Breakdown

AV2 N1/2 _ - 1 1 D V

VALVE SERIES

CONNECTION TYPE/SIZE

N	NPT Pipe Thread
S	SAE Straight Thread

BORE RESTRICTION

blank	Unrestricted Bore
R	Restricted Bore

BODY & ADAPTER MATERIAL

1	Carbon Steel
---	--------------

ADAPTER & STEM SEALS

V	Viton (Standard)
---	------------------

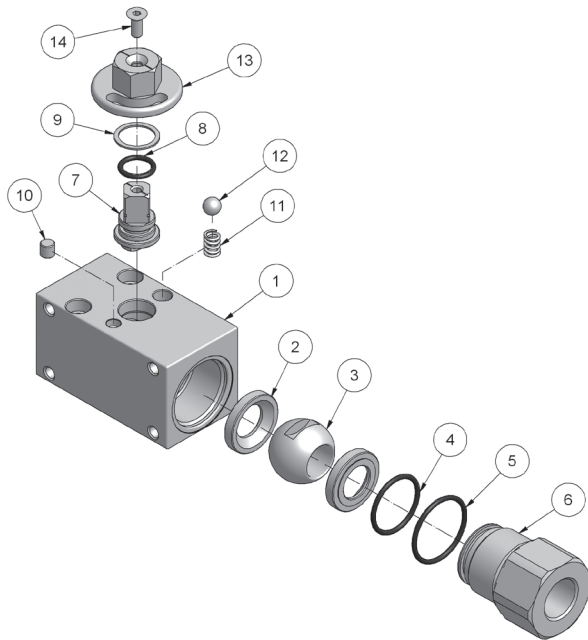
BALL & STEM SEATS

D	POM
---	-----

BALL & STEM MATERIAL

1	Carbon Steel
---	--------------

Please consult your system's seal manufacturer for recommendation of seal selection, as Anchor Fluid Power does not accept responsibility for seal selection.



Parts List		
ITEM	QTY	PART NUMBER
1	1	AV2 Valve Body
2	2	Ball Seats
3	1	Ball
4	1	Adapter O-Ring (Small)
5	1	Adapter O-Ring (Large)
6	1	Adapter
7	1	Stem
8	1	Stem O-Ring
9	1	Stem Seat
10	1	Stop Pin
11	1	Spring
12	1	Detent Ball
13	1	Alignment Stop
14	1	Screw