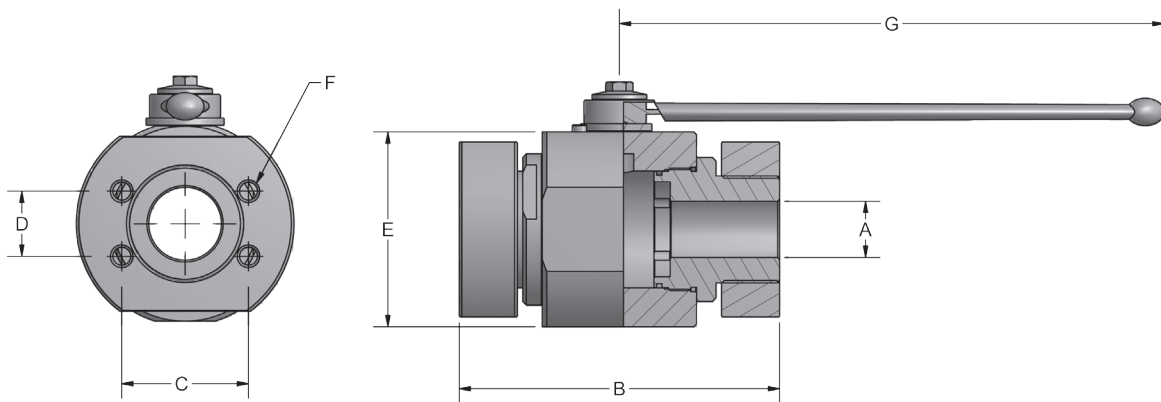


Carbon Steel with Zinc Chromate Plating (RoHS Compliant)  
 316 stainless steel available from stock  
 POM seats & Buna O-rings standard on carbon steel valves  
 Optional seal materials available for extreme temperature applications & fluid compatibility (Consult Factory)



Standard handle supplied is C92501Z-SW17. Refer to page 43 for details.

ABF SERIES - CODE 61									
SERIES	PSI MAX	A BORE	B	C	D	E	F UNC-2B	G	WEIGHT
ABF3#20	4000	1.26	6.77	2.31	1.19	3.66	7/16-14	11.81	17.9 LBS
ABF3#24	3000	1.57	6.95	2.75	1.41	4.21	1/2-13	11.81	24.6 LBS
ABF3#32	3000	1.89	7.72	3.06	1.69	4.49	1/2-13	11.81	33.8 LBS

ABF SERIES - CODE 62									
SERIES	PSI MAX	A BORE	B	C	D	E	F UNC-2B	G	WEIGHT
ABF6#20	5000	1.26	6.77	2.63	1.25	3.66	1/2-13	11.81	17.9 LBS
ABF6#24	5000	1.57	6.95	3.13	1.44	4.21	5/8-11	11.81	24.6 LBS
ABF6#32	5000	1.89	7.72	3.81	1.75	4.49	3/4-10	11.81	33.8 LBS

**Model Code Breakdown**

**ABF3 #32 - 1 1 D B**

**Valve Series**

ABF3	Code 61
ABF6	Code 62

**Connection Size**

**Body & Adapter Material**

1	Carbon Steel
2	316 Stainless Steel

**Ball & Stem Material**

1	Carbon Steel
2	316 Stainless Steel

**Locking Kit or Optional Handle Code**  
(See pages 42 & 43)

**Adapter & Stem Seals**

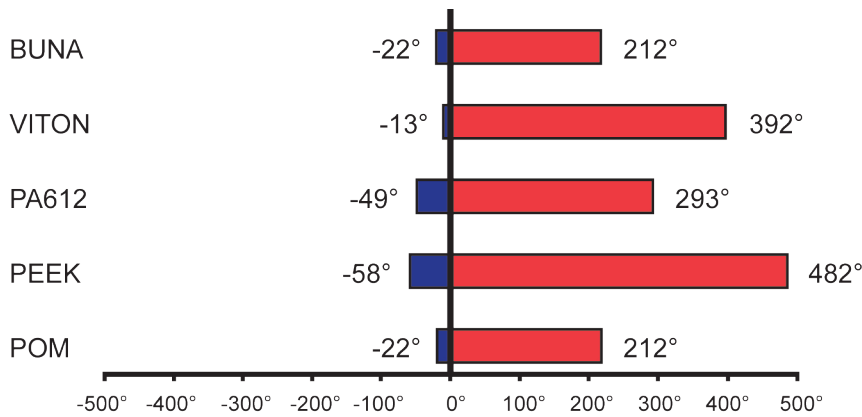
<b>B</b>	<b>Buna- Standard</b>
V	Viton (Std on S/S)

**Ball & Stem Seats**

<b>D</b>	<b>POM- Standard</b>
P	PEEK
N	PA612

Please consult your system's seal manufacturer for recommendation of seal selection, as Anchor Fluid Power does not accept responsibility for seal selection.

**MAXIMUM & MINIMUM WORKING TEMPERATURES FOR SEAL MATERIALS**



All temperatures are in degrees Fahrenheit.