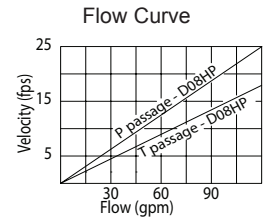
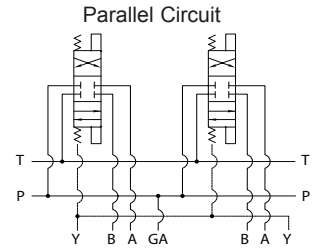
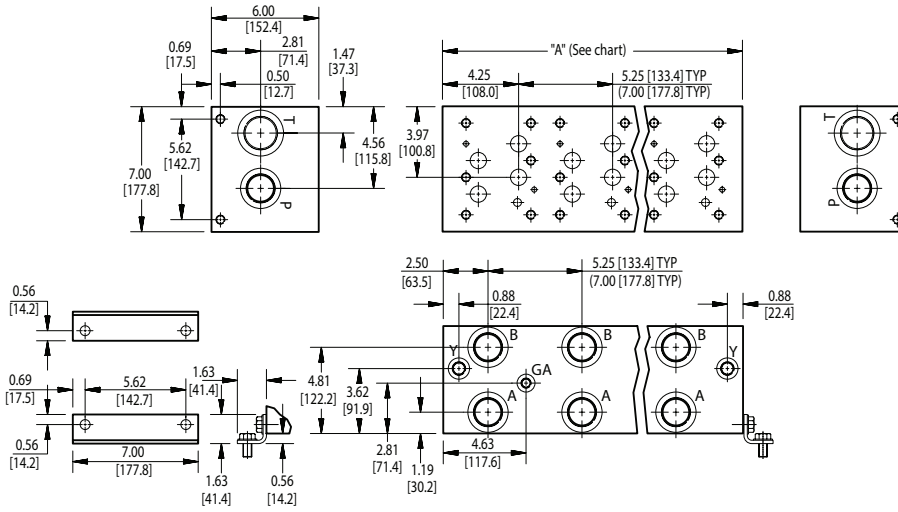


D08 High Flow Parallel Circuit Manifold



Rated flow Pressure 72 gpm @ 15 fps
 Rated flow Tank 100 gpm @ 15 fps

No. of stations	* 01	02	03	04	05	06	07
"A" length (code 5 spa.) inch [mm]	6.25 [158.8]	11.50 [292.1]	16.75 [425.5]	22.00 [558.8]	27.25 [692.2]	32.50 [825.5]	37.75 [958.9]
apx. weight alum lb [kg]	26 [12]	48 [22]	70 [32]	92 [42]	114 [52]	136 [62]	158 [72]
apx. weight ferrous lb [kg]	69 [31]	126 [57]	183 [83]	240 [109]	298 [135]	355 [161]	412 [187]
"A" length (code 7 spa.) inch [mm]	--	13.25 [336.6]	20.25 [514.4]	27.25 [692.2]	34.25 [870.0]	41.25 [1047.8]	--
apx. weight alum lb [kg]	--	55 [25]	85 [39]	114 [52]	143 [65]	173 [78]	--
apx. weight ferrous lb [kg]	--	145 [66]	221 [100]	298 [135]	374 [170]	450 [204]	--

* Gauge port
 not available
 on 01 station.

All mounting hardware is supplied.
 See page 65 for itemized list.

Port code	Valve mtg.	Manifold mtg.
P, S	0.50-13 UNC x 1.19 [30] DP	0.50-13 UNC x 0.88 [22.3] DP
B, M, T	M12 ISO 6H x 1.19 [30] DP	M12 ISO 6H x 0.88 [22.3] DP

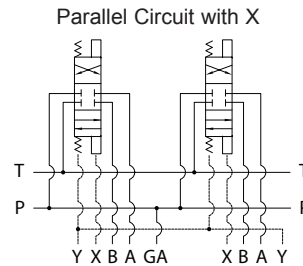
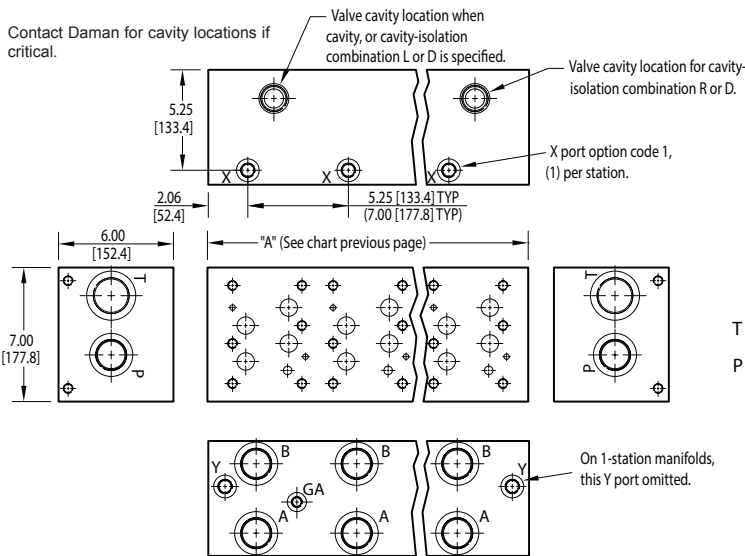
Specifications, descriptions, and dimensional data are subject to correction or change without notice or incurring obligation.
 Download latest catalog page revisions at www.daman.com.

Ordering Information

For **coating options**
 see pages 245-246.

Material	Valve Pattern	Circuit	No. of Stations	Valve Spacing	Port Threads	Options																																																																																
<table border="1"> <thead> <tr> <th colspan="2">Material</th> </tr> </thead> <tbody> <tr> <td>A</td> <td>Aluminum - 6061-T6 3000† psi • 20.7 MPa</td> </tr> <tr> <td>D</td> <td>Ductile Iron - D4512 5000† psi • 34.5 MPa</td> </tr> </tbody> </table> <p>† Working pressure should be considered in accordance with ISO 4413 to determine appropriate material type.</p>	Material		A	Aluminum - 6061-T6 3000† psi • 20.7 MPa	D	Ductile Iron - D4512 5000† psi • 34.5 MPa	<table border="1"> <thead> <tr> <th colspan="2">Valve Pattern</th> </tr> </thead> <tbody> <tr> <td>D08</td> <td>ISO 4401-08-07 NFFPA T3.5.1-D08 See Tech Information</td> </tr> </tbody> </table>	Valve Pattern		D08	ISO 4401-08-07 NFFPA T3.5.1-D08 See Tech Information	<table border="1"> <thead> <tr> <th colspan="2">Circuit</th> </tr> </thead> <tbody> <tr> <td>HP</td> <td>Parallel Circuit High Flow</td> </tr> </tbody> </table>	Circuit		HP	Parallel Circuit High Flow	<table border="1"> <thead> <tr> <th colspan="2">No. of Stations</th> </tr> </thead> <tbody> <tr> <td colspan="2">Aluminum</td> </tr> <tr> <td>01...07</td> <td>Available with spacing code 5</td> </tr> <tr> <td>02...06</td> <td>Available with spacing code 7</td> </tr> <tr> <td colspan="2">Ductile Iron</td> </tr> <tr> <td>01...07</td> <td>Available with spacing code 5</td> </tr> <tr> <td>02...05</td> <td>Available with spacing code 7</td> </tr> </tbody> </table>	No. of Stations		Aluminum		01...07	Available with spacing code 5	02...06	Available with spacing code 7	Ductile Iron		01...07	Available with spacing code 5	02...05	Available with spacing code 7	<table border="1"> <thead> <tr> <th colspan="2">Valve Spacing</th> </tr> </thead> <tbody> <tr> <td>5</td> <td>5.25 inch 133.4 mm</td> </tr> <tr> <td>7</td> <td>7.00 inch 177.8 mm</td> </tr> </tbody> </table>	Valve Spacing		5	5.25 inch 133.4 mm	7	7.00 inch 177.8 mm	<table border="1"> <thead> <tr> <th colspan="2">Port Threads</th> <th>P,A,B</th> <th>T</th> <th>Y</th> <th>X optional</th> <th>GA</th> </tr> </thead> <tbody> <tr> <td>P</td> <td>NPTF • ANSI B1.20.3</td> <td>1.25</td> <td>1.50</td> <td>0.38</td> <td>0.25</td> <td>0.25</td> </tr> <tr> <td>S</td> <td>SAE • ISO 11926</td> <td>-20</td> <td>-24</td> <td>-8</td> <td>-4</td> <td>-6</td> </tr> <tr> <td>B</td> <td>BSPP • ISO 1179</td> <td>1.25</td> <td>1.50</td> <td>0.50</td> <td>0.25</td> <td>none</td> </tr> <tr> <td>M</td> <td>ISO • ISO 6149</td> <td>M42</td> <td>M48</td> <td>M16</td> <td>M10</td> <td>none</td> </tr> <tr> <td>T</td> <td>BSPT • ISO 7</td> <td>1.25</td> <td>1.50</td> <td>0.50</td> <td>0.25</td> <td>none</td> </tr> </tbody> </table>	Port Threads		P,A,B	T	Y	X optional	GA	P	NPTF • ANSI B1.20.3	1.25	1.50	0.38	0.25	0.25	S	SAE • ISO 11926	-20	-24	-8	-4	-6	B	BSPP • ISO 1179	1.25	1.50	0.50	0.25	none	M	ISO • ISO 6149	M42	M48	M16	M10	none	T	BSPT • ISO 7	1.25	1.50	0.50	0.25	none	<table border="1"> <thead> <tr> <th colspan="2">Options</th> </tr> </thead> <tbody> <tr> <td colspan="2">See next page for available options and ordering codes.</td> </tr> </tbody> </table>	Options		See next page for available options and ordering codes.	
Material																																																																																						
A	Aluminum - 6061-T6 3000† psi • 20.7 MPa																																																																																					
D	Ductile Iron - D4512 5000† psi • 34.5 MPa																																																																																					
Valve Pattern																																																																																						
D08	ISO 4401-08-07 NFFPA T3.5.1-D08 See Tech Information																																																																																					
Circuit																																																																																						
HP	Parallel Circuit High Flow																																																																																					
No. of Stations																																																																																						
Aluminum																																																																																						
01...07	Available with spacing code 5																																																																																					
02...06	Available with spacing code 7																																																																																					
Ductile Iron																																																																																						
01...07	Available with spacing code 5																																																																																					
02...05	Available with spacing code 7																																																																																					
Valve Spacing																																																																																						
5	5.25 inch 133.4 mm																																																																																					
7	7.00 inch 177.8 mm																																																																																					
Port Threads		P,A,B	T	Y	X optional	GA																																																																																
P	NPTF • ANSI B1.20.3	1.25	1.50	0.38	0.25	0.25																																																																																
S	SAE • ISO 11926	-20	-24	-8	-4	-6																																																																																
B	BSPP • ISO 1179	1.25	1.50	0.50	0.25	none																																																																																
M	ISO • ISO 6149	M42	M48	M16	M10	none																																																																																
T	BSPT • ISO 7	1.25	1.50	0.50	0.25	none																																																																																
Options																																																																																						
See next page for available options and ordering codes.																																																																																						

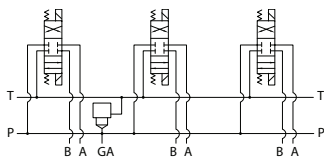
Options - D08 High Flow Parallel Manifold



ISOLATIONS		
Ordering code letter:	* Isolation is between stations:	Available # of stations:
5.25 [133.4] spacing		
A	01 & 02	02-07
B	02 & 03	03-07
C	03 & 04	04-07
D	04 & 05	05-07
E	05 & 06	06-07
F	06 & 07	07
7.00 [177.8] spacing		
A	01 & 02	02-06
B	02 & 03	03-06
C	03 & 04	04-06
D	04 & 05	05-06
E	05 & 06	06

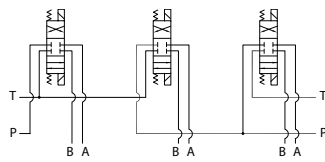
* Stations are numbered left to right.

Parallel Circuit with Cavity



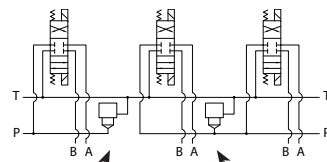
Valves with P in the nose and T out the side must be used.

Parallel Circuit with Isolations



Manifold shown with P isolation between 1 & 2 (PA), and T isolation between 2 & 3 (TB).

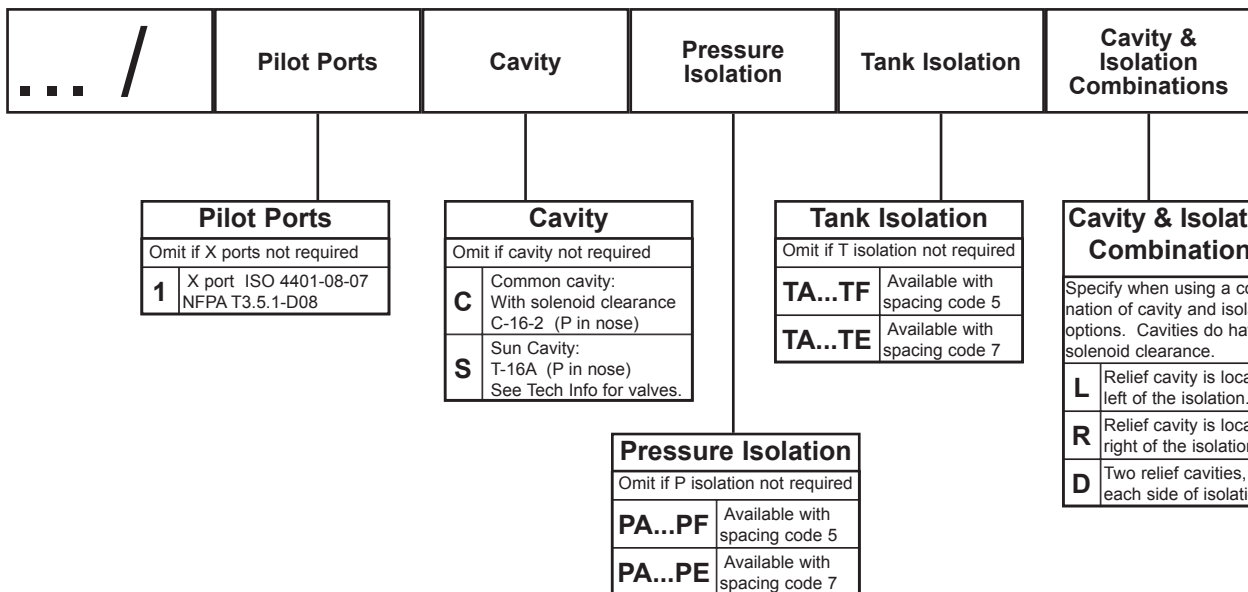
Cavity & Isolation Combinations



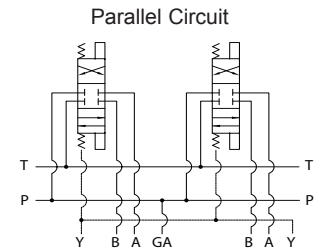
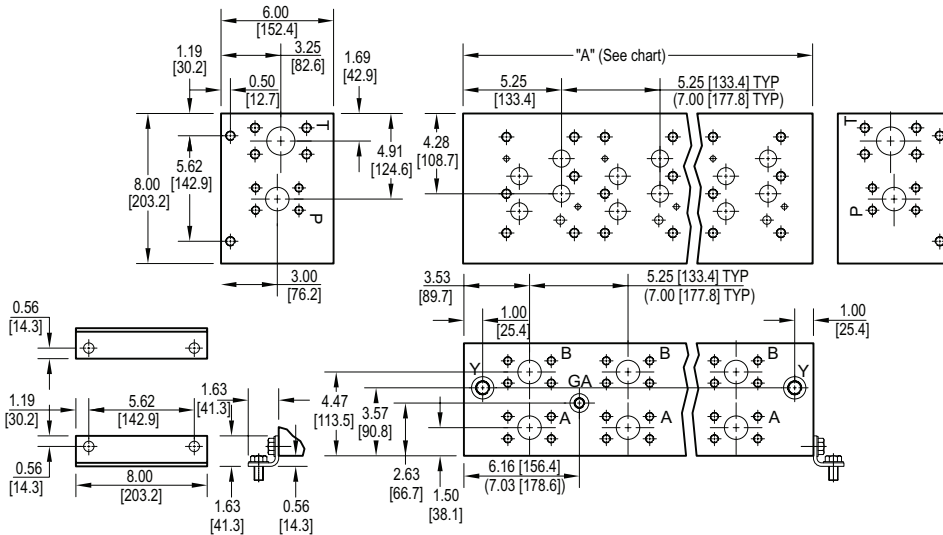
NOTES:

- 1) The GA port is not available on a (1) station manifold.
- 2) The GA port is not available when a pressure isolation is located between stations 1 & 2.

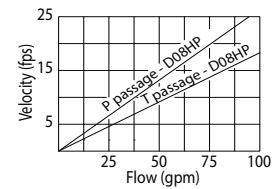
Ordering Information



D08 High Flow Parallel Circuit Manifold - Flange Ports



Parallel Circuit



Rated flow Pressure 57 gpm @ 15 fps
Rated flow Tank 83 gpm @ 15 fps

No. of stations	01	02	03	04	05	06	07
"A" length (code 5 spa.) inch [mm]	7.63 [193.7]	12.88 [327.0]	18.13 [460.4]	23.38 [593.7]	28.63 [727.1]	33.88 [860.4]	39.13 [993.8]
apx. weight alum lb [kg]	37 [16.6]	62 [28]	87 [40]	112 [51]	137 [62]	163 [74]	188 [85]
apx. weight ferrous lb [kg]	99 [45]	167 [76]	235 [107]	303 [137]	371 [168]	439 [199]	507 [230]
"A" length (code 7 spa.) inch [mm]	--	14.63 [371.5]	21.63 [549.3]	28.63 [727.1]	35.63 [904.9]	42.63 [1082.7]	--
apx. weight alum lb [kg]	--	70 [32]	104 [47]	137 [62]	171 [78]	204 [93]	--
apx. weight ferrous lb [kg]	--	190 [86]	280 [127]	371 [168]	462 [210]	552 [250]	--

All mounting hardware is supplied.
See page 65 for itemized list.

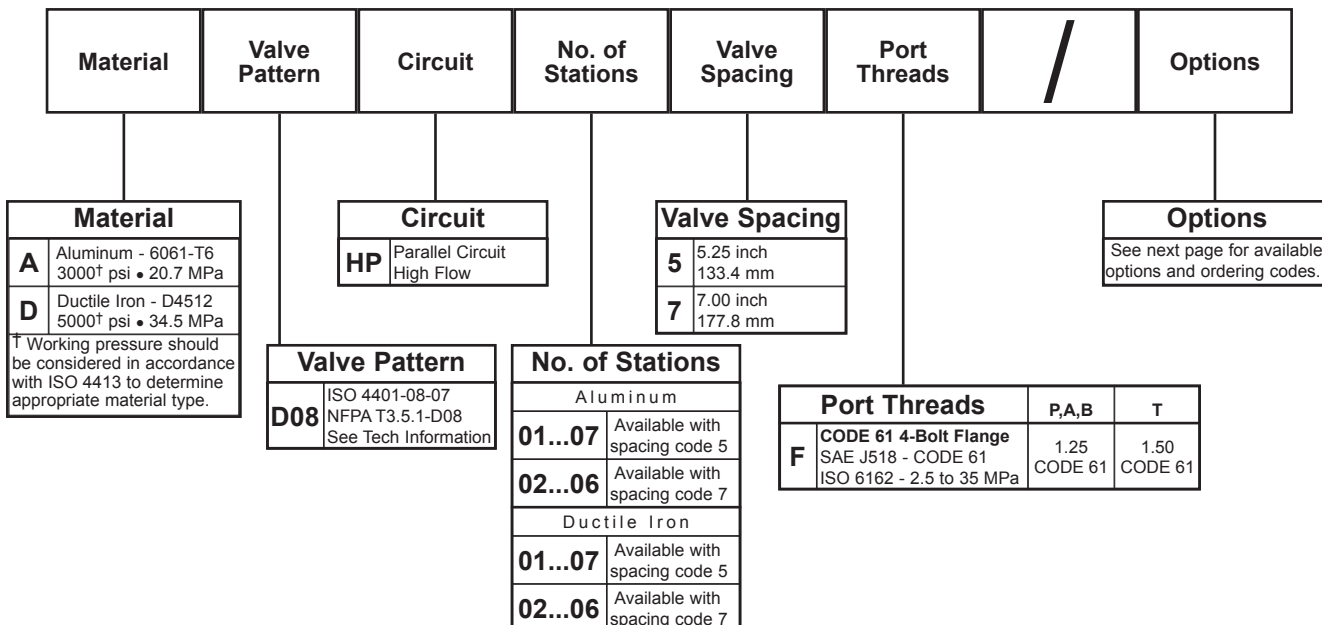
Port code	Valve mtg.	Manifold mtg.	Flange mtg.	GA port	Y port	X port *
F	0.50-13 UNC x 1.19 [30] DP	0.50-13 UNC x 0.88 [22] DP	ISO 6162 Type II - Inch	-6 SAE J1926	-8 SAE J1926	-4 SAE J1926
F / M	M12 ISO 6H x 1.19 [30] DP	M12 ISO 6H x 0.88 [22] DP	ISO 6162 Type I - metric	NONE	M16 ISO 6149	M10 ISO 6149

* X port is optional. See options on next page.

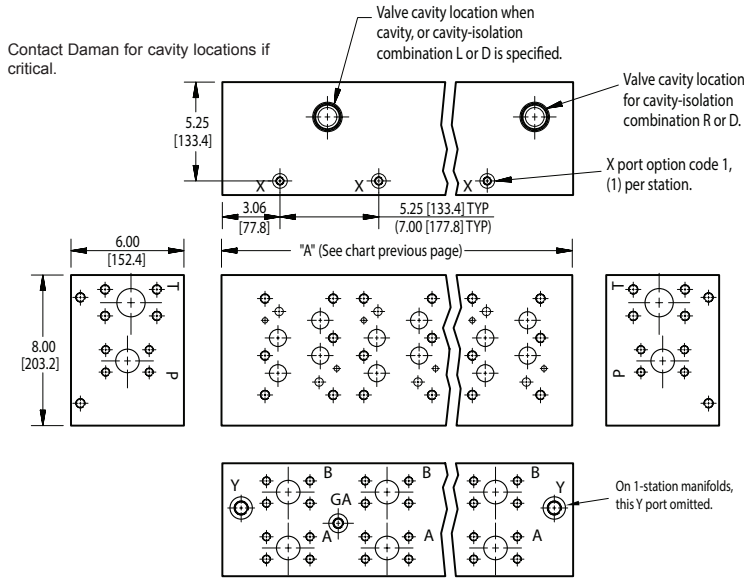
Specifications, descriptions, and dimensional data are subject to correction or change without notice or incurring obligation.
Download latest catalog page revisions at www.daman.com.

Ordering Information

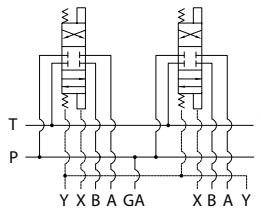
For **coating options**
see pages 245-246.



Options - D08 High Flow Parallel Manifold - Flange Ports



Parallel Circuit with X



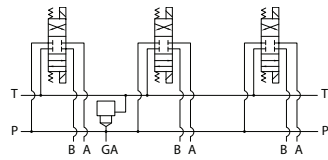
ISOLATIONS

Daman isolation options allow a manifold to have two independent pressure and/or tank ports. Isolations are drilled rather than plugged to ensure a leakproof and failproof isolation.

Ordering code letter:	* Isolation is between stations:	Available # of stations:
5.25 [133.4] spacing		
A	01 & 02	02-07
B	02 & 03	03-07
C	03 & 04	04-07
D	04 & 05	05-07
E	05 & 06	06-07
F	06 & 07	07
7.00 [177.8] spacing		
A	01 & 02	02-06
B	02 & 03	03-06
C	03 & 04	04-06
D	04 & 05	05-06
E	05 & 06	06

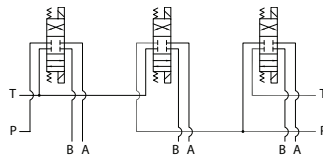
* Stations are numbered left to right.

Parallel Circuit with Cavity



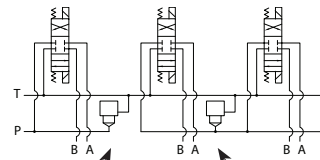
Valves with P in the nose and T out the side must be used.

Parallel Circuit with Isolations



Manifold shown with P isolation between 1 & 2 (PA), and T isolation between 2 & 3 (TB).

Cavity & Isolation Combinations



Option code L
Cavity left of isolation
Option code R
Cavity right of isolation
Option code D includes both cavities

NOTES:

1) The GA port is not available when a pressure isolation is located between stations 1 & 2.

Ordering Information

...	Thread Type	Pilot Ports	Cavity	Pressure Isolation	Tank Isolation	Cavity & Isolation Combinations																																														
	<table border="1"> <thead> <tr> <th colspan="2">Thread Type</th> </tr> </thead> <tbody> <tr> <td>Omit</td> <td>Inch threads / ports</td> </tr> <tr> <td>M</td> <td>Metric threads / ports</td> </tr> </tbody> </table>	Thread Type		Omit	Inch threads / ports	M	Metric threads / ports	<table border="1"> <thead> <tr> <th colspan="2">Pilot Ports</th> </tr> </thead> <tbody> <tr> <td colspan="2">Omit if X ports not required</td> </tr> <tr> <td>1</td> <td>X port ISO 4401-08-07 NFPA T3.5.1-D08</td> </tr> </tbody> </table>	Pilot Ports		Omit if X ports not required		1	X port ISO 4401-08-07 NFPA T3.5.1-D08	<table border="1"> <thead> <tr> <th colspan="2">Cavity</th> </tr> </thead> <tbody> <tr> <td colspan="2">Omit if cavity not required</td> </tr> <tr> <td>C</td> <td>Common cavity: No solenoid clearance C-16-2 (P in nose)</td> </tr> <tr> <td>S</td> <td>Sun Cavity: T-16A (P in nose) See Tech Info for valves.</td> </tr> </tbody> </table>	Cavity		Omit if cavity not required		C	Common cavity: No solenoid clearance C-16-2 (P in nose)	S	Sun Cavity: T-16A (P in nose) See Tech Info for valves.	<table border="1"> <thead> <tr> <th colspan="2">Pressure Isolation</th> </tr> </thead> <tbody> <tr> <td colspan="2">Omit if P isolation not required</td> </tr> <tr> <td>PA...PF</td> <td>Available with spacing code 5</td> </tr> <tr> <td>PA...PE</td> <td>Available with spacing code 7</td> </tr> </tbody> </table>	Pressure Isolation		Omit if P isolation not required		PA...PF	Available with spacing code 5	PA...PE	Available with spacing code 7	<table border="1"> <thead> <tr> <th colspan="2">Tank Isolation</th> </tr> </thead> <tbody> <tr> <td colspan="2">Omit if T isolation not required</td> </tr> <tr> <td>TA...TF</td> <td>Available with spacing code 5</td> </tr> <tr> <td>TA...TE</td> <td>Available with spacing code 7</td> </tr> </tbody> </table>	Tank Isolation		Omit if T isolation not required		TA...TF	Available with spacing code 5	TA...TE	Available with spacing code 7	<table border="1"> <thead> <tr> <th colspan="2">Relief / Isolation Combinations</th> </tr> </thead> <tbody> <tr> <td colspan="2">Specify when using a combination of cavity and isolation options. Cavities do not have solenoid clearance.</td> </tr> <tr> <td>L</td> <td>Relief cavity is located left of the isolation.</td> </tr> <tr> <td>R</td> <td>Relief cavity is located right of the isolation.</td> </tr> <tr> <td>D</td> <td>Two relief cavities, one each side of isolation.</td> </tr> </tbody> </table>	Relief / Isolation Combinations		Specify when using a combination of cavity and isolation options. Cavities do not have solenoid clearance.		L	Relief cavity is located left of the isolation.	R	Relief cavity is located right of the isolation.	D	Two relief cavities, one each side of isolation.
Thread Type																																																				
Omit	Inch threads / ports																																																			
M	Metric threads / ports																																																			
Pilot Ports																																																				
Omit if X ports not required																																																				
1	X port ISO 4401-08-07 NFPA T3.5.1-D08																																																			
Cavity																																																				
Omit if cavity not required																																																				
C	Common cavity: No solenoid clearance C-16-2 (P in nose)																																																			
S	Sun Cavity: T-16A (P in nose) See Tech Info for valves.																																																			
Pressure Isolation																																																				
Omit if P isolation not required																																																				
PA...PF	Available with spacing code 5																																																			
PA...PE	Available with spacing code 7																																																			
Tank Isolation																																																				
Omit if T isolation not required																																																				
TA...TF	Available with spacing code 5																																																			
TA...TE	Available with spacing code 7																																																			
Relief / Isolation Combinations																																																				
Specify when using a combination of cavity and isolation options. Cavities do not have solenoid clearance.																																																				
L	Relief cavity is located left of the isolation.																																																			
R	Relief cavity is located right of the isolation.																																																			
D	Two relief cavities, one each side of isolation.																																																			