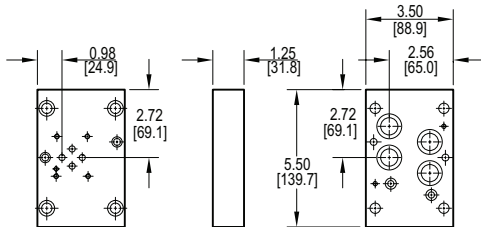
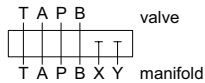


# Valve Adaptors for D07 Manifolds

## Adapt D03 valve to D07 manifold

Valve mtg: UNC #10-24 x 0.44 DP or  
Metric M5-0.8mm ISO 6H x [11.1] DP

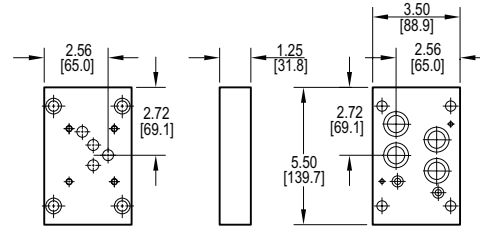
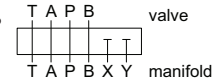
Adaptor mounting hardware is supplied.  
See page 108 for itemized list.



## Adapt D05 valve to D07 manifold

Valve mtg: UNC 0.25-20 x 0.50 DP or  
Metric M6-1.0mm ISO 6H x [12.7] DP

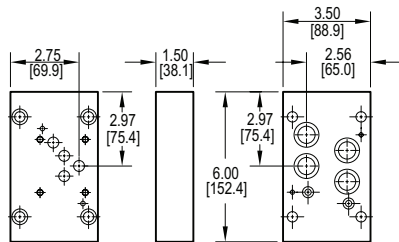
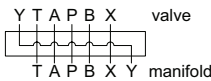
Adaptor mounting hardware is supplied.  
See page 108 for itemized list.



## Adapt D05H valve to D07 manifold

Valve mtg: UNC 0.25-20 x 0.50 DP or  
Metric M6-1.0mm ISO 6H x [12.7] DP

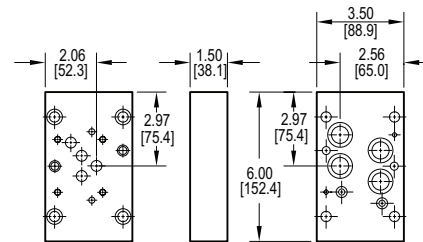
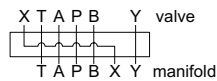
Adaptor mounting hardware is supplied.  
See page 108 for itemized list.



## Adapt D05HE valve to D07 manifold

Valve mtg: UNC 0.25-20 x 0.50 DP or  
Metric M6-1.0mm ISO 6H x [12.7] DP

Adaptor mounting hardware is supplied.  
See page 108 for itemized list.



Specifications, descriptions, and dimensional data are subject to correction or change without notice or incurring obligation. Download latest catalog page revisions at [www.daman.com](http://www.daman.com).

# Ordering Information

For coating options  
see pages 245-246.

Material	Valve Pattern	Manifold Pattern	Product Type	Port Orientation	Bolt Threads
----------	---------------	------------------	--------------	------------------	--------------

Material	
<b>A</b>	Aluminum - 6061-T6 3000† psi • 20.7 MPa
<b>D</b>	Ductile Iron - D4512 5000† psi • 34.5 MPa
† Working pressure should be considered in accordance with ISO 4413 to determine appropriate material type.	

Manifold Pattern	
<b>D07</b>	ISO 4401-07-06 NFPA T3.5.1-D07 See Tech Information

Port Orientation	
<b>AB</b>	A <sub>v</sub> common to A <sub>m</sub> B <sub>v</sub> common to B <sub>m</sub>

Valve Pattern	
See Tech Information	
<b>D03</b>	ISO 4401-03-02 NFPA T3.5.1-D03
<b>D05</b>	ISO 4401-05-04 NFPA T3.5.1-D05
<b>D05H</b>	(USA std) NFPA T3.5.1-D05 Alt B
<b>D05HE</b>	ISO 4401-05-05 NFPA T3.5.1-D05 Alt A

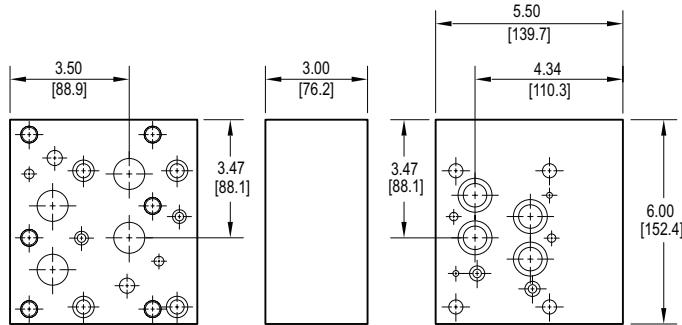
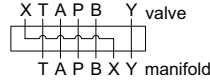
Product Type	
<b>VA</b>	Valve Adaptor

Bolt Threads	
Omit for inch (UNC) bolt kit.	
<b>M</b>	Metric (ISO 6H) bolt kit

# Valve Adaptors for D07 Manifolds

## Adapt D08 valve to D07 manifold

**Valve mtg:** UNC 0.50-13 x 1.19 DP or  
Metric M12-1.75mm ISO 6H x [30.2] DP  
**Adaptor mounting hardware is supplied.**  
See page 108 for itemized list.



**Note:** This adaptor is too wide to use on any position other than station one of a multi-station manifold.

Specifications, descriptions, and dimensional data are subject to correction or change without notice or incurring obligation. Download latest catalog page revisions at [www.daman.com](http://www.daman.com).

## Ordering Information

For **coating options** see pages 245-246.

Material	Valve Pattern	Manifold Pattern	Product Type	Port Orientation	Bolt Threads																														
<table border="1"> <thead> <tr> <th colspan="2">Material</th> </tr> </thead> <tbody> <tr> <td><b>A</b></td> <td>Aluminum - 6061-T6 3000<sup>†</sup> psi • 20.7 MPa</td> </tr> <tr> <td><b>D</b></td> <td>Ductile Iron - D4512 5000<sup>†</sup> psi • 34.5 MPa</td> </tr> <tr> <td colspan="2"><sup>†</sup> Working pressure should be considered in accordance with ISO 4413 to determine appropriate material type.</td> </tr> </tbody> </table>	Material		<b>A</b>	Aluminum - 6061-T6 3000 <sup>†</sup> psi • 20.7 MPa	<b>D</b>	Ductile Iron - D4512 5000 <sup>†</sup> psi • 34.5 MPa	<sup>†</sup> Working pressure should be considered in accordance with ISO 4413 to determine appropriate material type.		<table border="1"> <thead> <tr> <th colspan="2">Valve Pattern</th> </tr> </thead> <tbody> <tr> <td><b>D08</b></td> <td>ISO 4401-08-07 NFFPA T3.5.1-D08 See Tech Information</td> </tr> </tbody> </table>	Valve Pattern		<b>D08</b>	ISO 4401-08-07 NFFPA T3.5.1-D08 See Tech Information	<table border="1"> <thead> <tr> <th colspan="2">Manifold Pattern</th> </tr> </thead> <tbody> <tr> <td><b>D07</b></td> <td>ISO 4401-07-06 NFFPA T3.5.1-D07 See Tech Information</td> </tr> </tbody> </table>	Manifold Pattern		<b>D07</b>	ISO 4401-07-06 NFFPA T3.5.1-D07 See Tech Information	<table border="1"> <thead> <tr> <th colspan="2">Product Type</th> </tr> </thead> <tbody> <tr> <td><b>VA</b></td> <td>Valve Adaptor</td> </tr> </tbody> </table>	Product Type		<b>VA</b>	Valve Adaptor	<table border="1"> <thead> <tr> <th colspan="2">Port Orientation</th> </tr> </thead> <tbody> <tr> <td><b>AB</b></td> <td>A<sub>V</sub> common to A<sub>M</sub> B<sub>V</sub> common to B<sub>M</sub></td> </tr> </tbody> </table>	Port Orientation		<b>AB</b>	A <sub>V</sub> common to A <sub>M</sub> B <sub>V</sub> common to B <sub>M</sub>	<table border="1"> <thead> <tr> <th colspan="2">Bolt Threads</th> </tr> </thead> <tbody> <tr> <td colspan="2">Omit for inch (UNC) bolt kit.</td> </tr> <tr> <td><b>M</b></td> <td>Metric (ISO 6H) bolt kit</td> </tr> </tbody> </table>	Bolt Threads		Omit for inch (UNC) bolt kit.		<b>M</b>	Metric (ISO 6H) bolt kit
Material																																			
<b>A</b>	Aluminum - 6061-T6 3000 <sup>†</sup> psi • 20.7 MPa																																		
<b>D</b>	Ductile Iron - D4512 5000 <sup>†</sup> psi • 34.5 MPa																																		
<sup>†</sup> Working pressure should be considered in accordance with ISO 4413 to determine appropriate material type.																																			
Valve Pattern																																			
<b>D08</b>	ISO 4401-08-07 NFFPA T3.5.1-D08 See Tech Information																																		
Manifold Pattern																																			
<b>D07</b>	ISO 4401-07-06 NFFPA T3.5.1-D07 See Tech Information																																		
Product Type																																			
<b>VA</b>	Valve Adaptor																																		
Port Orientation																																			
<b>AB</b>	A <sub>V</sub> common to A <sub>M</sub> B <sub>V</sub> common to B <sub>M</sub>																																		
Bolt Threads																																			
Omit for inch (UNC) bolt kit.																																			
<b>M</b>	Metric (ISO 6H) bolt kit																																		