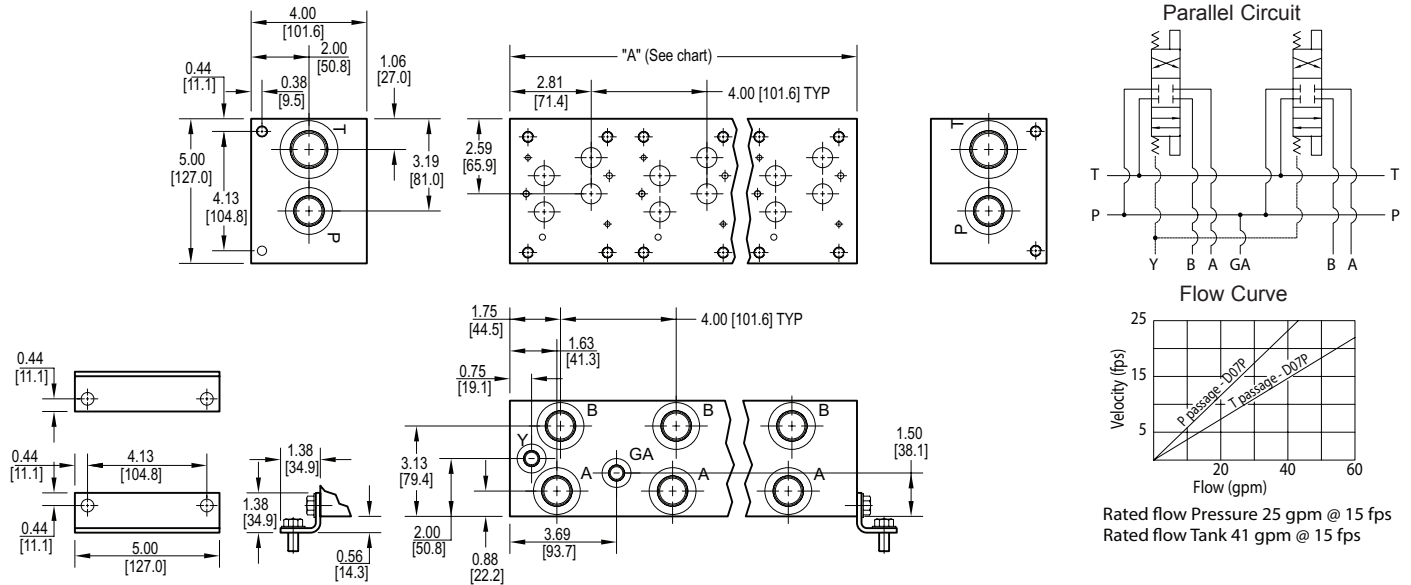


D07 Standard Flow Parallel Circuit Manifold



All mounting hardware is supplied.
See page 65 for itemized list.

No. of stations	* 01	02	03	04	05	06	07	08
"A" length (code 4 spa.) inch [mm]	4.00 [101.6]	8.00 [203.2]	12.00 [304.8]	16.00 [406.4]	20.00 [508.0]	24.00 [609.6]	28.00 [711.2]	32.00 [812.8]
apx. weight alum lb [kg]	6 [3]	14 [6]	22 [10]	30 [14]	38 [17]	46 [21]	52 [24]	60 [27]
apx. weight ferrous lb [kg]	24 [11]	46 [21]	69 [31]	90 [41]	114 [52]	135 [61]	158 [72]	180 [82]

* Length of 01 sta. with "C" relief cavity 5.50 [139.7]. Gauge port not available on 01 station.

Port code	Valve mtg.	Manifold mtg.
P, S	0.38-16 UNC x 1.00 [25] DP 0.25-20 UNC x 0.75 [19] DP	0.38-16 UNC x 0.75 [19] DP
B, M, T	M10 ISO 6H x 1.00 [25] DP M6 ISO 6H x 0.75 [19] DP	M10 ISO 6H x 0.75 [19] DP

Specifications, descriptions, and dimensional data are subject to correction or change without notice or incurring obligation.
Download latest catalog page revisions at www.daman.com.

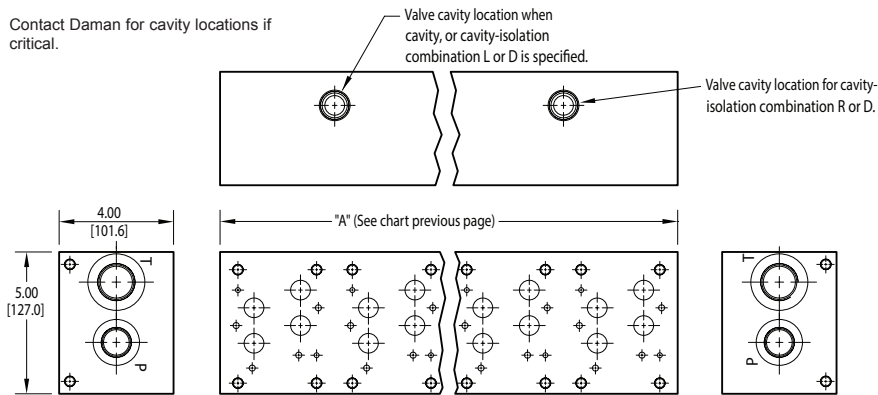
Ordering Information

For **coating options**
see pages 245-246.

Material	Valve Pattern	Circuit	No. of Stations	Valve Spacing	Port Threads	/	Options																																																																																		
<table border="1" style="width: 100%;"> <thead> <tr> <th colspan="2">Material</th> </tr> </thead> <tbody> <tr> <td>A</td> <td>Aluminum - 6061-T6 3000† psi • 20.7 MPa</td> </tr> <tr> <td>D</td> <td>Ductile Iron - D4512 5000† psi • 34.5 MPa</td> </tr> <tr> <td colspan="2">† Working pressure should be considered in accordance with ISO 4413 to determine appropriate material type.</td> </tr> </tbody> </table>	Material		A	Aluminum - 6061-T6 3000† psi • 20.7 MPa	D	Ductile Iron - D4512 5000† psi • 34.5 MPa	† Working pressure should be considered in accordance with ISO 4413 to determine appropriate material type.		<table border="1" style="width: 100%;"> <thead> <tr> <th colspan="2">Circuit</th> </tr> </thead> <tbody> <tr> <td>P</td> <td>Parallel Manifold Standard Flow</td> </tr> </tbody> </table>	Circuit		P	Parallel Manifold Standard Flow	<table border="1" style="width: 100%;"> <thead> <tr> <th colspan="2">Valve Pattern</th> </tr> </thead> <tbody> <tr> <td>D07</td> <td>ISO 4401-07-06 NFFA T3.5.1-D07 See Tech Information</td> </tr> </tbody> </table>	Valve Pattern		D07	ISO 4401-07-06 NFFA T3.5.1-D07 See Tech Information	<table border="1" style="width: 100%;"> <thead> <tr> <th colspan="2">No. of Stations</th> </tr> </thead> <tbody> <tr> <td colspan="2">Aluminum</td> </tr> <tr> <td>01...08</td> <td>Available with spacing code 4</td> </tr> <tr> <td colspan="2">Ductile Iron</td> </tr> <tr> <td>01...08</td> <td>Available with spacing code 4</td> </tr> </tbody> </table>	No. of Stations		Aluminum		01...08	Available with spacing code 4	Ductile Iron		01...08	Available with spacing code 4	<table border="1" style="width: 100%;"> <thead> <tr> <th colspan="2">Valve Spacing</th> </tr> </thead> <tbody> <tr> <td>4</td> <td>4.00 inch 101.6 mm</td> </tr> </tbody> </table>	Valve Spacing		4	4.00 inch 101.6 mm	<table border="1" style="width: 100%;"> <thead> <tr> <th colspan="7">Port Threads</th> </tr> <tr> <th></th> <th>P,A,B</th> <th>T</th> <th>Y</th> <th>X optional</th> <th>GA</th> <th></th> </tr> </thead> <tbody> <tr> <td>P</td> <td>NPTF • ANSI B1.20.3</td> <td>0.75</td> <td>1.00</td> <td>0.38</td> <td>0.25</td> <td>0.25</td> </tr> <tr> <td>S</td> <td>SAE • ISO 11926</td> <td>-12</td> <td>-16</td> <td>-6</td> <td>-4</td> <td>-6</td> </tr> <tr> <td>B</td> <td>BSPP • ISO 1179</td> <td>0.75</td> <td>1.00</td> <td>0.38</td> <td>0.25</td> <td>none</td> </tr> <tr> <td>M</td> <td>ISO • ISO 6149</td> <td>M27</td> <td>M33</td> <td>M14</td> <td>M10</td> <td>none</td> </tr> <tr> <td>T</td> <td>BSPT • ISO 7</td> <td>0.75</td> <td>1.00</td> <td>0.38</td> <td>0.25</td> <td>none</td> </tr> </tbody> </table>	Port Threads								P,A,B	T	Y	X optional	GA		P	NPTF • ANSI B1.20.3	0.75	1.00	0.38	0.25	0.25	S	SAE • ISO 11926	-12	-16	-6	-4	-6	B	BSPP • ISO 1179	0.75	1.00	0.38	0.25	none	M	ISO • ISO 6149	M27	M33	M14	M10	none	T	BSPT • ISO 7	0.75	1.00	0.38	0.25	none	<table border="1" style="width: 100%;"> <thead> <tr> <th colspan="2">Options</th> </tr> </thead> <tbody> <tr> <td colspan="2">See next page for available options and ordering codes.</td> </tr> </tbody> </table>	Options		See next page for available options and ordering codes.	
Material																																																																																									
A	Aluminum - 6061-T6 3000† psi • 20.7 MPa																																																																																								
D	Ductile Iron - D4512 5000† psi • 34.5 MPa																																																																																								
† Working pressure should be considered in accordance with ISO 4413 to determine appropriate material type.																																																																																									
Circuit																																																																																									
P	Parallel Manifold Standard Flow																																																																																								
Valve Pattern																																																																																									
D07	ISO 4401-07-06 NFFA T3.5.1-D07 See Tech Information																																																																																								
No. of Stations																																																																																									
Aluminum																																																																																									
01...08	Available with spacing code 4																																																																																								
Ductile Iron																																																																																									
01...08	Available with spacing code 4																																																																																								
Valve Spacing																																																																																									
4	4.00 inch 101.6 mm																																																																																								
Port Threads																																																																																									
	P,A,B	T	Y	X optional	GA																																																																																				
P	NPTF • ANSI B1.20.3	0.75	1.00	0.38	0.25	0.25																																																																																			
S	SAE • ISO 11926	-12	-16	-6	-4	-6																																																																																			
B	BSPP • ISO 1179	0.75	1.00	0.38	0.25	none																																																																																			
M	ISO • ISO 6149	M27	M33	M14	M10	none																																																																																			
T	BSPT • ISO 7	0.75	1.00	0.38	0.25	none																																																																																			
Options																																																																																									
See next page for available options and ordering codes.																																																																																									

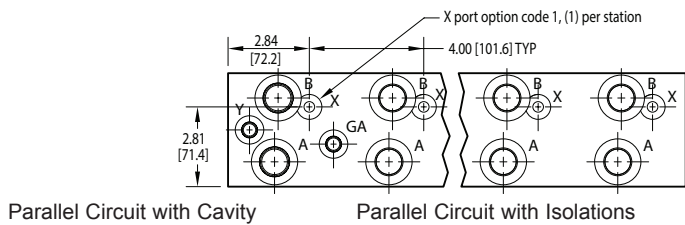
Options - D07 Standard Flow Parallel Manifold

Contact Daman for cavity locations if critical.



ISOLATIONS		
Daman isolation options allow a manifold to have two independent pressure and/or tank ports. Isolations are drilled rather than plugged to ensure a leakproof and failproof isolation.		
Ordering code letter:	* Isolation is between stations:	Available # of stations:
A	01 & 02	02-08
B	02 & 03	03-08
C	03 & 04	04-08
D	04 & 05	05-08
E	05 & 06	06-08
F	06 & 07	07-08
G	07 & 08	08

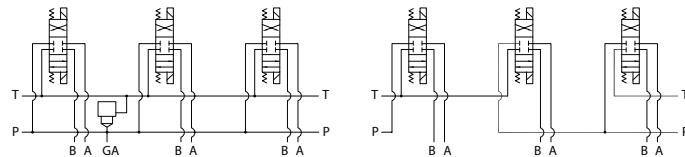
* Stations are numbered left to right.



Parallel Circuit with Cavity

Parallel Circuit with Isolations

Cavity & Isolation Combinations



Valves with P in the nose and T out the side must be used.

Manifold shown with P isolation between 1 & 2 (PA), and T isolation between 2 & 3 (TB).

Option code L
Cavity left of isolation
Option code R
Cavity right of isolation
Option code D includes both cavities

NOTES:	
1)	The GA port is not available on a (1) station manifold.
2)	The GA port is not available when a pressure isolation is located between stations 1 & 2.
3)	Some cavity and isolation combinations are not possible. Consult factory to determine availability.

Ordering Information

