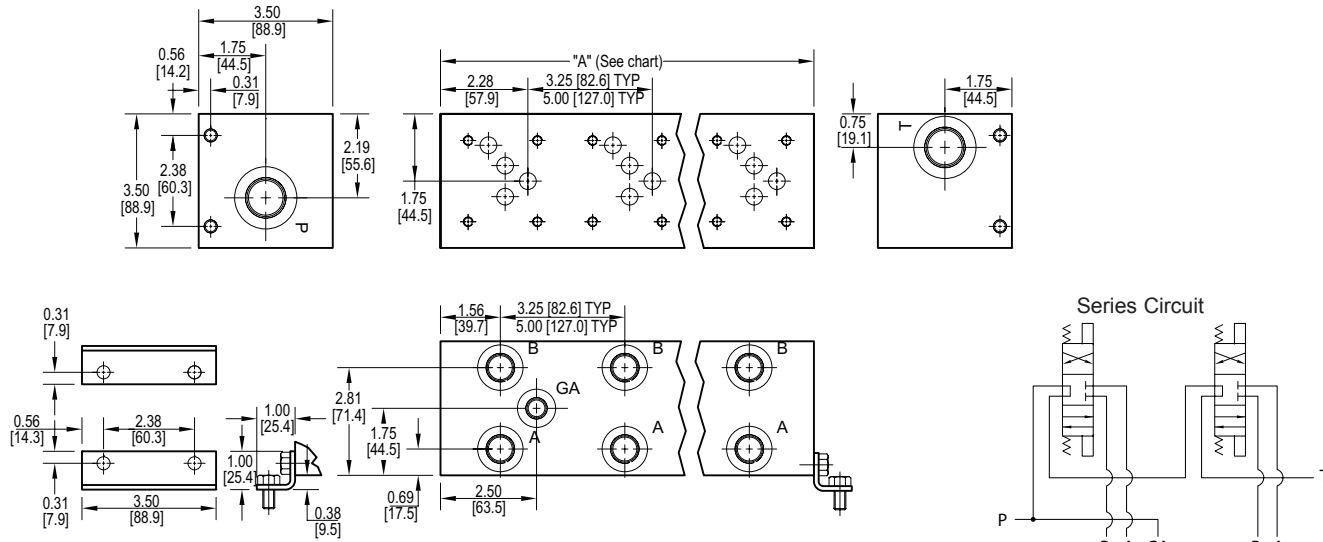


D05 Standard Flow Series Circuit Manifold



No. of stations	02	03	04
"A" length (code 3 spa.) inch [mm]	6.50 [165.1]	9.75 [247.7]	13.00 [330.2]
apx. weight alum lb [kg]	8 [4]	11 [5]	14 [7]
apx. weight ferrous lb [kg]	17 [8]	26 [12]	34 [15]
"A" length (code 5 spa.) inch [mm]	8.25 [209.6]	13.25 [336.6]	18.25 [463.6]
apx. weight alum lb [kg]	9 [4]	15 [7]	20 [9]
apx. weight ferrous lb [kg]	22 [10]	36 [16]	49 [22]

All mounting hardware is supplied, except for stainless. See page 64 for itemized list.

Port code	Valve mtg.	Manifold mtg.
P, S	0.25-20 UNC x 0.75 [19] DP	0.31-18 UNC x 0.44 [11.1] DP
B, M, T	M6 ISO 6H x 0.75 [19] DP	M8 ISO 6H x 0.44 [11.1] DP

Specifications, descriptions, and dimensional data are subject to correction or change without notice or incurring obligation. Download latest catalog page revisions at www.daman.com.

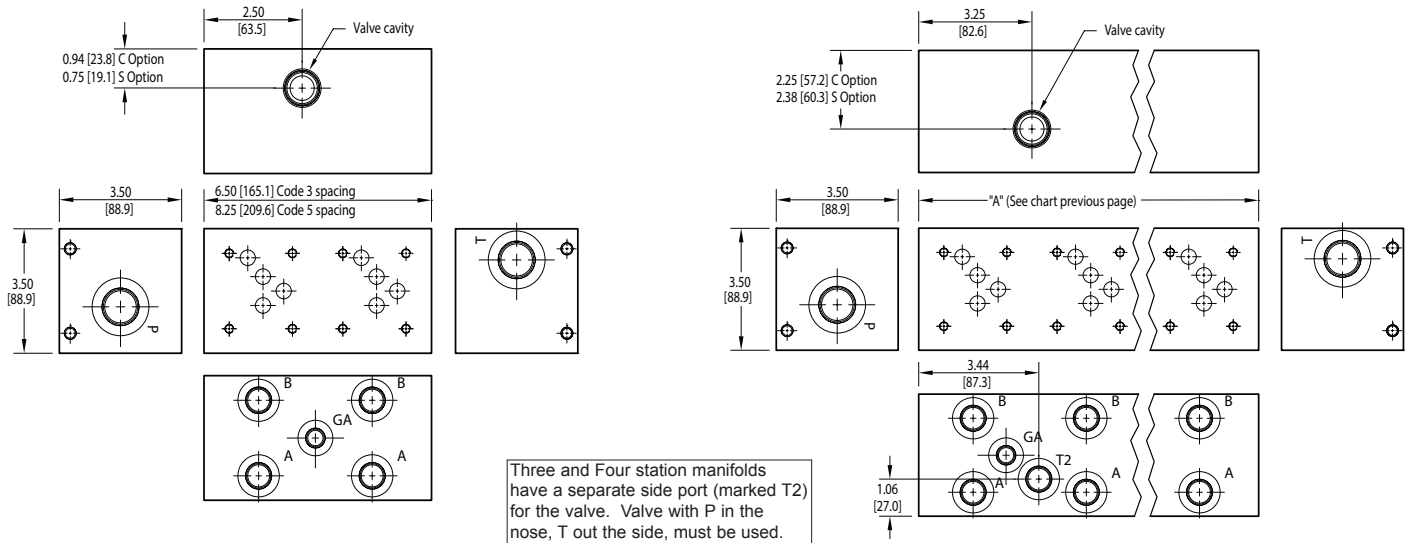
Ordering Information

For **coating options** see pages 245-246.

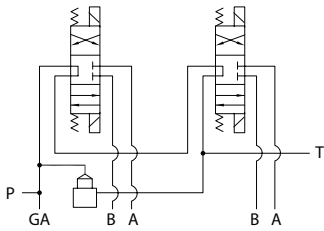
Material	Valve Pattern	Circuit	No. of Stations	Valve Spacing	Port Threads	Options																																																																																	
<table border="1"> <thead> <tr> <th colspan="2">Material</th> </tr> </thead> <tbody> <tr> <td>A</td> <td>Aluminum - 6061-T6 3000† psi • 20.7 MPa</td> </tr> <tr> <td>D</td> <td>Ductile Iron - D4512 5000† psi • 34.5 MPa</td> </tr> <tr> <td>S</td> <td>Stainless Steel - 17-4 5000† psi • 34.5 MPa</td> </tr> <tr> <td colspan="2">† Working pressure should be considered in accordance with ISO 4413 to determine appropriate material type.</td> </tr> </tbody> </table>	Material		A	Aluminum - 6061-T6 3000† psi • 20.7 MPa	D	Ductile Iron - D4512 5000† psi • 34.5 MPa	S	Stainless Steel - 17-4 5000† psi • 34.5 MPa	† Working pressure should be considered in accordance with ISO 4413 to determine appropriate material type.		<table border="1"> <thead> <tr> <th colspan="2">Valve Pattern</th> </tr> </thead> <tbody> <tr> <td>D05</td> <td>ISO-4401-05-04 NFFPA T3.5.1-D05 See Tech Information</td> </tr> </tbody> </table>	Valve Pattern		D05	ISO-4401-05-04 NFFPA T3.5.1-D05 See Tech Information	<table border="1"> <thead> <tr> <th colspan="2">Circuit</th> </tr> </thead> <tbody> <tr> <td>S</td> <td>Series Circuit Standard Flow</td> </tr> </tbody> </table>	Circuit		S	Series Circuit Standard Flow	<table border="1"> <thead> <tr> <th colspan="2">No. of Stations</th> </tr> </thead> <tbody> <tr> <td colspan="2">Aluminum</td> </tr> <tr> <td>02...04</td> <td>Available with spacing code 3</td> </tr> <tr> <td>02...04</td> <td>Available with spacing code 5</td> </tr> <tr> <td colspan="2">Ductile Iron</td> </tr> <tr> <td>02...04</td> <td>Available with spacing code 3</td> </tr> <tr> <td>02...04</td> <td>Available with spacing code 5</td> </tr> <tr> <td colspan="2">Stainless Steel</td> </tr> <tr> <td>02...04</td> <td>Available with spacing code 3</td> </tr> <tr> <td>02...04</td> <td>Available with spacing code 5</td> </tr> </tbody> </table>	No. of Stations		Aluminum		02...04	Available with spacing code 3	02...04	Available with spacing code 5	Ductile Iron		02...04	Available with spacing code 3	02...04	Available with spacing code 5	Stainless Steel		02...04	Available with spacing code 3	02...04	Available with spacing code 5	<table border="1"> <thead> <tr> <th colspan="2">Valve Spacing</th> </tr> </thead> <tbody> <tr> <td>3</td> <td>3.25 inch 82.6 mm</td> </tr> <tr> <td>5</td> <td>5.00 inch 127.0 mm</td> </tr> </tbody> </table>	Valve Spacing		3	3.25 inch 82.6 mm	5	5.00 inch 127.0 mm	<table border="1"> <thead> <tr> <th colspan="4">Port Threads</th> </tr> <tr> <th></th> <th>P & T</th> <th>A & B</th> <th>GA</th> </tr> </thead> <tbody> <tr> <td>P*</td> <td>NPTF • ANSI B1.20.3</td> <td>0.75</td> <td>0.50</td> <td>0.25</td> </tr> <tr> <td>S</td> <td>SAE • ISO 11926</td> <td>-12</td> <td>-8</td> <td>-6</td> </tr> <tr> <td>B</td> <td>BSPP • ISO 1179</td> <td>0.75</td> <td>0.50</td> <td>none</td> </tr> <tr> <td>M</td> <td>ISO • ISO 6149</td> <td>M27</td> <td>M18</td> <td>none</td> </tr> <tr> <td>T*</td> <td>BSPT • ISO 7</td> <td>0.75</td> <td>0.50</td> <td>none</td> </tr> </tbody> </table>	Port Threads					P & T	A & B	GA	P*	NPTF • ANSI B1.20.3	0.75	0.50	0.25	S	SAE • ISO 11926	-12	-8	-6	B	BSPP • ISO 1179	0.75	0.50	none	M	ISO • ISO 6149	M27	M18	none	T*	BSPT • ISO 7	0.75	0.50	none	<table border="1"> <thead> <tr> <th colspan="2">Options</th> </tr> </thead> <tbody> <tr> <td colspan="2">See next page for available options and ordering codes.</td> </tr> </tbody> </table>	Options		See next page for available options and ordering codes.	
Material																																																																																							
A	Aluminum - 6061-T6 3000† psi • 20.7 MPa																																																																																						
D	Ductile Iron - D4512 5000† psi • 34.5 MPa																																																																																						
S	Stainless Steel - 17-4 5000† psi • 34.5 MPa																																																																																						
† Working pressure should be considered in accordance with ISO 4413 to determine appropriate material type.																																																																																							
Valve Pattern																																																																																							
D05	ISO-4401-05-04 NFFPA T3.5.1-D05 See Tech Information																																																																																						
Circuit																																																																																							
S	Series Circuit Standard Flow																																																																																						
No. of Stations																																																																																							
Aluminum																																																																																							
02...04	Available with spacing code 3																																																																																						
02...04	Available with spacing code 5																																																																																						
Ductile Iron																																																																																							
02...04	Available with spacing code 3																																																																																						
02...04	Available with spacing code 5																																																																																						
Stainless Steel																																																																																							
02...04	Available with spacing code 3																																																																																						
02...04	Available with spacing code 5																																																																																						
Valve Spacing																																																																																							
3	3.25 inch 82.6 mm																																																																																						
5	5.00 inch 127.0 mm																																																																																						
Port Threads																																																																																							
	P & T	A & B	GA																																																																																				
P*	NPTF • ANSI B1.20.3	0.75	0.50	0.25																																																																																			
S	SAE • ISO 11926	-12	-8	-6																																																																																			
B	BSPP • ISO 1179	0.75	0.50	none																																																																																			
M	ISO • ISO 6149	M27	M18	none																																																																																			
T*	BSPT • ISO 7	0.75	0.50	none																																																																																			
Options																																																																																							
See next page for available options and ordering codes.																																																																																							

* Pipe ports in stainless can experience galling

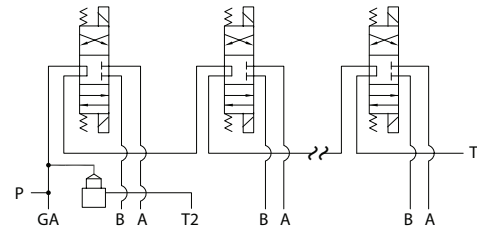
Options - D05 Standard Flow Series Manifold



Series Circuit with Cavity - (2) station



Series Circuit with Cavity - (3) or (4) station



Ordering Information



Cavity	
Omit if cavity not required.	
C	Common cavity: 2-station has solenoid clearance. 3 & 4 station does not have solenoid clearance. C-10-2 (P in nose) For valves w/1" hex max.
S	Sun Cavity: T-3A (P in nose) See Tech Info for valves.

Port Code (ref.)	T2 Port Size
	3 and 4 Station Manifold
P	0.50 NPTF • ANSI B1.20.3
S	-8 SAE • ISO 11926
B	0.50 BSPP • ISO 1179
M	M18 ISO • ISO 6149
T	0.50 BSPT • ISO 7