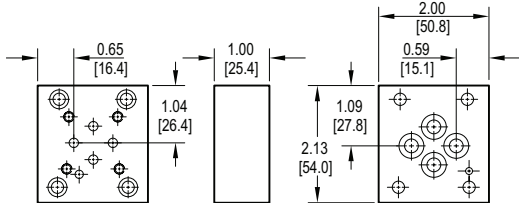
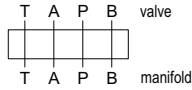


Valve Adaptors for D03 Manifolds

Adapt D02 valve to D03 manifold

Valve mtg: UNC #10-24 x 0.50 DP or
Metric M5-0.8mm ISO 6H x [12.7] DP

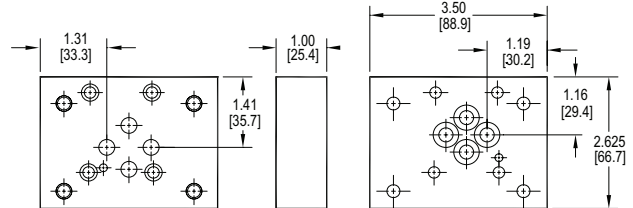
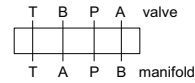
Adaptor mounting hardware is supplied.
See page 108 for itemized list.



Adapt S04 valve to D03 manifold • BA oriented

Valve mtg: UNC 0.31-18 x 0.88 DP or
Metric M8 x 1.25mm ISO 6H x [22.2] DP

Adaptor mounting hardware is supplied.
See page 108 for itemized list.

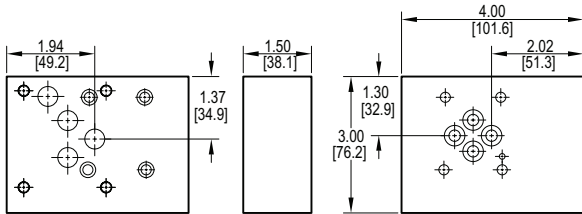
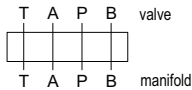


This adaptor does not orient the A & B ports on the manifold to the respective valve solenoids.

Adapt D05 valve to D03 manifold • style A

Valve mtg: UNC 0.25-20 x 0.50 DP or
Metric M6-1.0mm ISO 6H x [12.7] DP

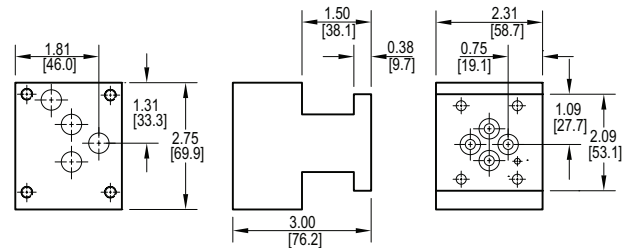
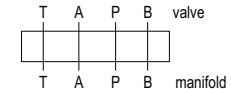
Adaptor mounting hardware is supplied.
See page 108 for itemized list.



Adapt D05 valve to D03 manifold • style B

Valve mtg: UNC 0.25-20 x 0.75 DP or
Metric M6-1.0mm ISO 6H x [19.1] DP

Adaptor mounting hardware is supplied.
See page 108 for itemized list.



Specifications, descriptions, and dimensional data are subject to correction or change without notice or incurring obligation.
Download latest catalog page revisions at www.daman.com.

Ordering Information

For **coating options**
see pages 245-246.

Material	Valve Pattern	Manifold Pattern	Product Type	Port Orientation	Style	Bolt Threads
----------	---------------	------------------	--------------	------------------	-------	--------------

Material	
A	Aluminum - 6061-T6 3000 [†] psi • 20.7 MPa
D	Ductile Iron - D4512 5000 [†] psi • 34.5 MPa

[†] Working pressure should be considered in accordance with ISO 4413 to determine appropriate material type.

Manifold Pattern	
D03	ISO 4401-03-02 NFPA T3.5.1-D03 See Tech Information

Valve Pattern	
D02	ISO 4401-02-01 NFPA T3.5.1-D02 See Tech Information
D05	ISO 4401-05-04 NFPA T3.5.1-D05 See Tech Information
S04	ISO 10372-04-04 Daman standard S04 See Tech Information

Product Type	
VA	Valve Adaptor

Port Orientation	
AB	A _V common to A _M B _V common to B _M
BA	A _V common to B _M B _V common to A _M S04 valve pattern only.

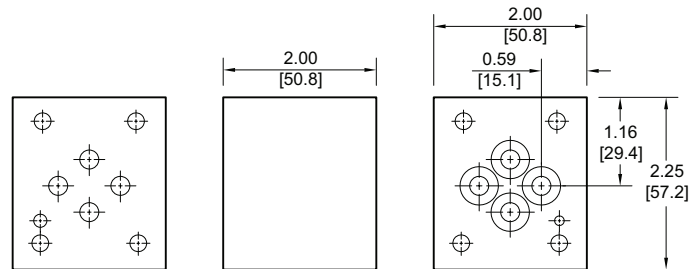
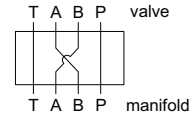
Bolt Threads	
Omit for inch (UNC) bolt kit.	
M	Metric (ISO 6H) bolt kit

D05-D03 Style	
Required with D05 valve pattern. Omit with D02 or S04 patterns.	
A	Style A Low height, wide design
B	Style B Tall height, narrow design

Valve Adaptors for D03 Manifolds

D03 A & B Port Swap Block • (BA oriented)

Adaptor hardware / interface seal kit is supplied. See page 108 for itemized list.



Specifications, descriptions, and dimensional data are subject to correction or change without notice or incurring obligation. Download latest catalog page revisions at www.daman.com.

Ordering Information

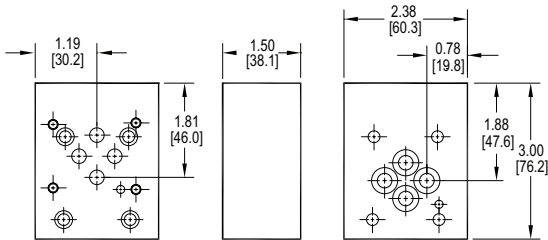
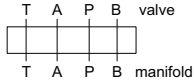
For coating options see pages 245-246.

Material	Valve Pattern	Manifold Pattern	Product Type	Port Orientation	Bolt Threads																														
<table border="1"> <thead> <tr> <th colspan="2">Material</th> </tr> </thead> <tbody> <tr> <td>A</td> <td>Aluminum - 6061-T6 3000† psi • 20.7 MPa</td> </tr> <tr> <td>D</td> <td>Ductile Iron - D4512 5000† psi • 34.5 MPa</td> </tr> <tr> <td colspan="2">† Working pressure should be considered in accordance with ISO 4413 to determine appropriate material type.</td> </tr> </tbody> </table>	Material		A	Aluminum - 6061-T6 3000† psi • 20.7 MPa	D	Ductile Iron - D4512 5000† psi • 34.5 MPa	† Working pressure should be considered in accordance with ISO 4413 to determine appropriate material type.		<table border="1"> <thead> <tr> <th colspan="2">Valve Pattern</th> </tr> </thead> <tbody> <tr> <td>D03</td> <td>ISO 4401-03-02 NFPA T3.5.1-D03 See Tech Information</td> </tr> </tbody> </table>	Valve Pattern		D03	ISO 4401-03-02 NFPA T3.5.1-D03 See Tech Information	<table border="1"> <thead> <tr> <th colspan="2">Manifold Pattern</th> </tr> </thead> <tbody> <tr> <td>D03</td> <td>ISO 4401-03-02 NFPA T3.5.1-D03 See Tech Information</td> </tr> </tbody> </table>	Manifold Pattern		D03	ISO 4401-03-02 NFPA T3.5.1-D03 See Tech Information	<table border="1"> <thead> <tr> <th colspan="2">Product Type</th> </tr> </thead> <tbody> <tr> <td>VA</td> <td>Valve Adaptor</td> </tr> </tbody> </table>	Product Type		VA	Valve Adaptor	<table border="1"> <thead> <tr> <th colspan="2">Port Orientation</th> </tr> </thead> <tbody> <tr> <td>BA</td> <td>B_v common to A_m A_v common to B_m D03 valve pattern only.</td> </tr> </tbody> </table>	Port Orientation		BA	B _v common to A _m A _v common to B _m D03 valve pattern only.	<table border="1"> <thead> <tr> <th colspan="2">Bolt Threads</th> </tr> </thead> <tbody> <tr> <td>M</td> <td>Mounting holes sized for Metric (ISO 6H) bolts.</td> </tr> <tr> <td colspan="2">Omit: Mounting holes sized for inch (UNC) bolts.</td> </tr> </tbody> </table>	Bolt Threads		M	Mounting holes sized for Metric (ISO 6H) bolts.	Omit: Mounting holes sized for inch (UNC) bolts.	
Material																																			
A	Aluminum - 6061-T6 3000† psi • 20.7 MPa																																		
D	Ductile Iron - D4512 5000† psi • 34.5 MPa																																		
† Working pressure should be considered in accordance with ISO 4413 to determine appropriate material type.																																			
Valve Pattern																																			
D03	ISO 4401-03-02 NFPA T3.5.1-D03 See Tech Information																																		
Manifold Pattern																																			
D03	ISO 4401-03-02 NFPA T3.5.1-D03 See Tech Information																																		
Product Type																																			
VA	Valve Adaptor																																		
Port Orientation																																			
BA	B _v common to A _m A _v common to B _m D03 valve pattern only.																																		
Bolt Threads																																			
M	Mounting holes sized for Metric (ISO 6H) bolts.																																		
Omit: Mounting holes sized for inch (UNC) bolts.																																			

Valve Adaptors for D03 Manifolds

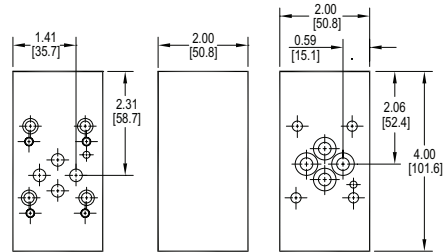
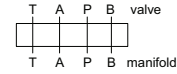
Rotate D03 Valve 90°

Adaptor hardware / interface seal kit is supplied. See page 108 for itemized list.



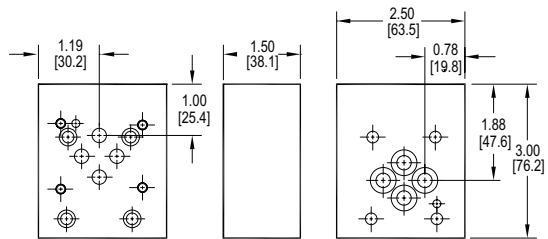
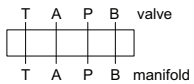
Rotate D03 Valve 180°

Adaptor hardware / interface seal kit is supplied. See page 108 for itemized list.



Rotate D03 Valve 270°

Adaptor hardware / interface seal kit is supplied. See page 108 for itemized list.



Ordering Information

For **coating options** see pages 245-246.

Material	Valve Pattern	Manifold Pattern	Product Type	Port Orientation	Rotation																																
<table border="1"> <thead> <tr> <th colspan="2">Material</th> </tr> </thead> <tbody> <tr> <td>A</td> <td>Aluminum - 6061-T6 3000[†] psi • 20.7 MPa</td> </tr> <tr> <td>D</td> <td>Ductile Iron - D4512 5000[†] psi • 34.5 MPa</td> </tr> <tr> <td colspan="2">† Working pressure should be considered in accordance with ISO 4413 to determine appropriate material type.</td> </tr> </tbody> </table>	Material		A	Aluminum - 6061-T6 3000 [†] psi • 20.7 MPa	D	Ductile Iron - D4512 5000 [†] psi • 34.5 MPa	† Working pressure should be considered in accordance with ISO 4413 to determine appropriate material type.		<table border="1"> <thead> <tr> <th colspan="2">Valve Pattern</th> </tr> </thead> <tbody> <tr> <td>D03</td> <td>ISO 4401-03-02 NFPA T3.5.1-D03 See Tech Information</td> </tr> </tbody> </table>	Valve Pattern		D03	ISO 4401-03-02 NFPA T3.5.1-D03 See Tech Information	<table border="1"> <thead> <tr> <th colspan="2">Manifold Pattern</th> </tr> </thead> <tbody> <tr> <td>D03</td> <td>ISO 4401-03-02 NFPA T3.5.1-D03 See Tech Information</td> </tr> </tbody> </table>	Manifold Pattern		D03	ISO 4401-03-02 NFPA T3.5.1-D03 See Tech Information	<table border="1"> <thead> <tr> <th colspan="2">Product Type</th> </tr> </thead> <tbody> <tr> <td>VA</td> <td>Valve Adaptor</td> </tr> </tbody> </table>	Product Type		VA	Valve Adaptor	<table border="1"> <thead> <tr> <th colspan="2">Port Orientation</th> </tr> </thead> <tbody> <tr> <td>AB</td> <td>A_V common to A_M B_V common to B_M</td> </tr> </tbody> </table>	Port Orientation		AB	A _V common to A _M B _V common to B _M	<table border="1"> <thead> <tr> <th colspan="2">Rotation</th> </tr> </thead> <tbody> <tr> <td>090</td> <td>90° CCW</td> </tr> <tr> <td>180</td> <td>180° CCW</td> </tr> <tr> <td>270</td> <td>270° CCW</td> </tr> </tbody> </table>	Rotation		090	90° CCW	180	180° CCW	270	270° CCW
Material																																					
A	Aluminum - 6061-T6 3000 [†] psi • 20.7 MPa																																				
D	Ductile Iron - D4512 5000 [†] psi • 34.5 MPa																																				
† Working pressure should be considered in accordance with ISO 4413 to determine appropriate material type.																																					
Valve Pattern																																					
D03	ISO 4401-03-02 NFPA T3.5.1-D03 See Tech Information																																				
Manifold Pattern																																					
D03	ISO 4401-03-02 NFPA T3.5.1-D03 See Tech Information																																				
Product Type																																					
VA	Valve Adaptor																																				
Port Orientation																																					
AB	A _V common to A _M B _V common to B _M																																				
Rotation																																					
090	90° CCW																																				
180	180° CCW																																				
270	270° CCW																																				