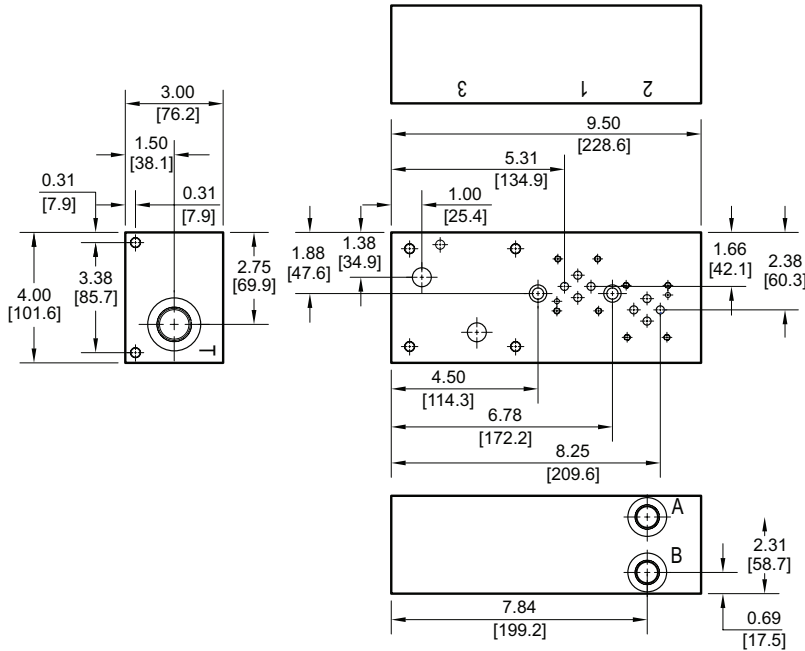


# D03 Tank Line Feed Circuit Manifold

**D03 Directional Valves**  
**2F06 Flow Control Valve**  
 Valve mtg: D03: UNC #10-24 x 0.63 DP  
 2F06: UNC 0.31-18 x 0.63 DP

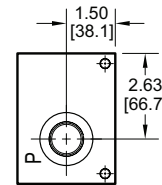
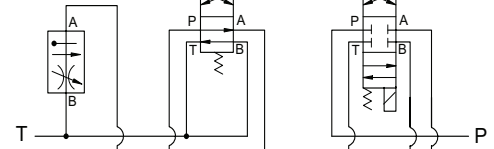


## “Meter Out” Tank Feed Circuit

Valve 3  
NFFPA 2F06

Valve 1

Valve 2



### Manifold Mounting:

Manifold bracket mounting kit is supplied. See page 64 for itemized mounting kit list.

Two SHCS clearance holes are provided for optional 5/16 (M8) SHCS mounting. Screws are user provided; minimum 3.00 in [75mm] long GR8 SHCS should be used.

Specifications, descriptions, and dimensional data are subject to correction or change without notice or incurring obligation. Download latest catalog page revisions at [www.daman.com](http://www.daman.com).

## Ordering Information



For **coating options** see pages 245-246.

Material	
<b>A</b>	Aluminum - 6061-T6 3000 <sup>†</sup> psi • 20.7 MPa
<b>D</b>	Ductile Iron - D4512 5000 <sup>†</sup> psi • 34.5 MPa

<sup>†</sup> Working pressure should be considered in accordance with ISO 4413 to determine appropriate material type.

Circuit	
<b>TF</b>	Tank Line Feed Circuit

Valve Pattern	
<b>D03</b>	ISO 4401-03-02 NFFPA T3.5.1-D03 See Tech Information
Flow Control Pattern (REF): 2F06 Pattern ISO 6263-06-05 NFFPA T3.5.1-2F06	

Port Threads			
	P & T	A & B	
<b>P</b>	NPTF • ANSI B1.20.3	0.75	0.38
<b>S</b>	SAE • ISO 11926	-12	-8