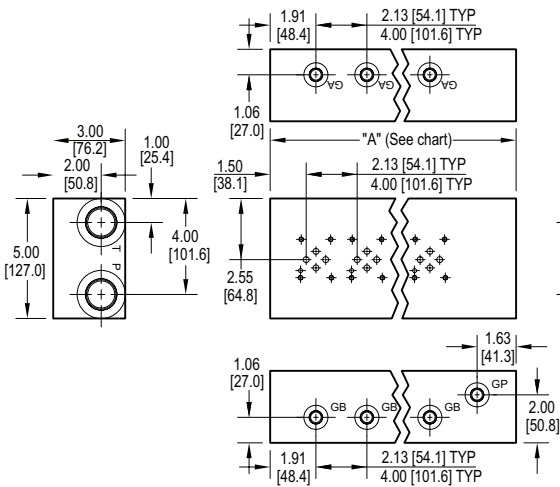
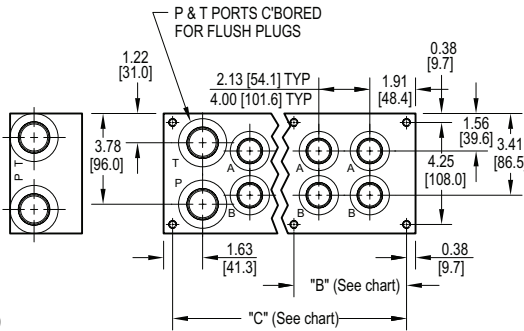


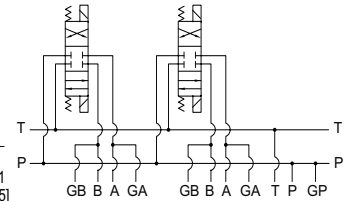
# D03 High Flow Bottom Ported Manifold



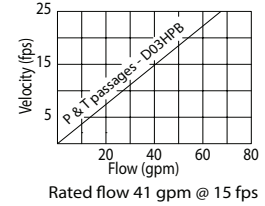
Mounting hardware is NOT supplied.



Parallel Circuit



Flow Curve



Port code	Valve mtg.	Manifold mtg.
P, S	#10-24 UNC x 0.56 [14.3] DP	0.38-16 UNC x 1.00 [25.4] DP
B, M, T	M5 ISO 6H x 0.56 [14.3] DP	M10 ISO 6H x 1.00 [25.4] DP

No. of stations	01	02	03	04	05	06	07	08	09	10	No. of stations	02	03	04	05	06
"A" length (code 2 spa.) inch [mm]	5.50 [139.7]	7.63 [193.7]	9.75 [247.7]	11.88 [301.6]	14.00 [355.6]	16.13 [409.6]	18.25 [463.6]	20.38 [517.5]	22.50 [571.5]	24.63 [625.5]	"A" length (code 4 spa.) inch [mm]	9.50 [241.3]	13.50 [342.9]	17.50 [444.5]	21.50 [546.1]	25.50 [647.7]
"B" dim (code 2 spa.) inch [mm]	--	--	--	--	--	--	8.97 [227.8]	11.09 [281.8]	11.09 [281.8]	11.09 [281.8]	"B" dim (code 4 spa.) inch [mm]	--	--	--	11.53 [292.9]	11.53 [292.9]
"C" dim (code 2 spa.) inch [mm]	4.75 [120.7]	6.88 [174.6]	9.00 [228.6]	11.13 [282.6]	13.25 [336.6]	15.38 [390.5]	17.50 [444.5]	19.63 [498.5]	21.75 [552.5]	23.88 [606.4]	"C" dim (code 4 spa.) inch [mm]	8.75 [222.3]	12.75 [323.9]	16.75 [425.5]	20.75 [527.1]	24.75 [628.7]
apx. weight alum lb [kg]	8 [4]	11 [5]	15 [7]	18 [8]	21 [10]	24 [11]	27 [12]	31 [14]	34 [15]	37 [17]	apx. weight alum lb [kg]	14 [6]	20 [9]	26 [12]	32 [15]	38 [17]
apx. weight ferrous lb [kg]	21 [10]	30 [13]	38 [17]	46 [21]	55 [25]	63 [29]	71 [32]	79 [36]	88 [40]	96 [44]	apx. weight ferrous lb [kg]	37 [17]	53 [24]	68 [31]	84 [38]	99 [45]

Specifications, descriptions, and dimensional data are subject to correction or change without notice or incurring obligation. Download latest catalog page revisions at [www.daman.com](http://www.daman.com).

## Ordering Information

Material	Valve Pattern	Circuit	No. of Stations	Valve Spacing	Port Threads
----------	---------------	---------	-----------------	---------------	--------------

For **coating options** see pages 245-246.

Material	
<b>A</b>	Aluminum - 6061-T6 3000 <sup>†</sup> psi • 20.7 MPa
<b>D</b>	Ductile Iron - D4512 5000 <sup>†</sup> psi • 34.5 MPa

<sup>†</sup> Working pressure should be considered in accordance with ISO 4413 to determine appropriate material type.

Circuit	
<b>HPB</b>	Parallel Circuit High Flow Bottom Ported

Valve Spacing	
<b>2</b>	2.13 inch 54.0 mm
<b>4</b>	4.00 inch 101.6 mm

Valve Pattern	
<b>D03</b>	ISO 4401-03-02 NFFPA T3.5.1-D03 See Tech Information

No. of Stations	
Aluminum	
<b>01...10</b>	Available with spacing code 2
<b>02...06</b>	Available with spacing code 4
Ductile Iron	
<b>01...10</b>	Available with spacing code 2
<b>02...06</b>	Available with spacing code 4

Port Threads			
	P & T	A & B	G*
<b>P</b>	NPTF • ANSI B1.20.3	1.00	0.75 0.25
<b>S</b>	SAE • ISO 11926	-16	-12 -4
<b>B</b>	BSPP • ISO 1179	1.00	0.75 0.25
<b>M</b>	ISO • ISO 6149	M33	M27 M10
<b>T</b>	BSPT • ISO 7	1.00	0.75 0.25