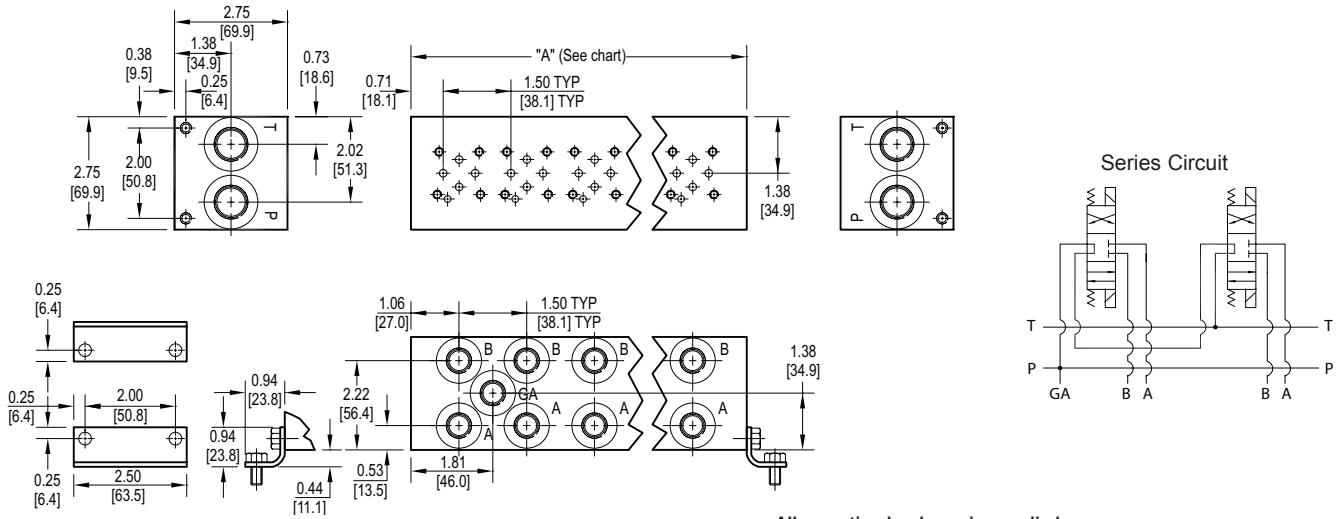


D02 Series Circuit Manifold



No. of stations	02	03	04
"A" length inch [mm]	3.63 [92.1]	5.13 [130.2]	6.63 [168.3]
apx. weight alum lb [kg]	5 [2.5]	7 [3]	8 [4]
apx. weight ferrous lb [kg]	8.5 [4]	12 [6]	16 [7]

All mounting hardware is supplied.
See page 64 for itemized list.

Port code	Valve mtg.	Manifold mtg.
P, S	#10-24 UNC x 0.56 [14] DP	0.25-20 UNC x 0.38 [9.7] DP
B, M, T	M5 ISO 6H x 0.56 [14] DP	M6 ISO 6H x 0.38 [9.7] DP

Note: Both Daman's parallel and series D02 manifolds have pressure and tank lines that run the length of the manifold. Consequently it is commonly assumed that an error was made by marking a parallel manifold incorrectly as a series. Upon closer inspection it can be seen that the valve patterns are indeed connected in series.

Specifications, descriptions, and dimensional data are subject to correction or change without notice or incurring obligation. Download latest catalog page revisions at www.daman.com.

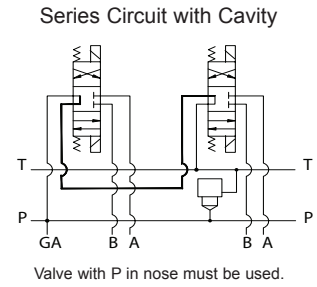
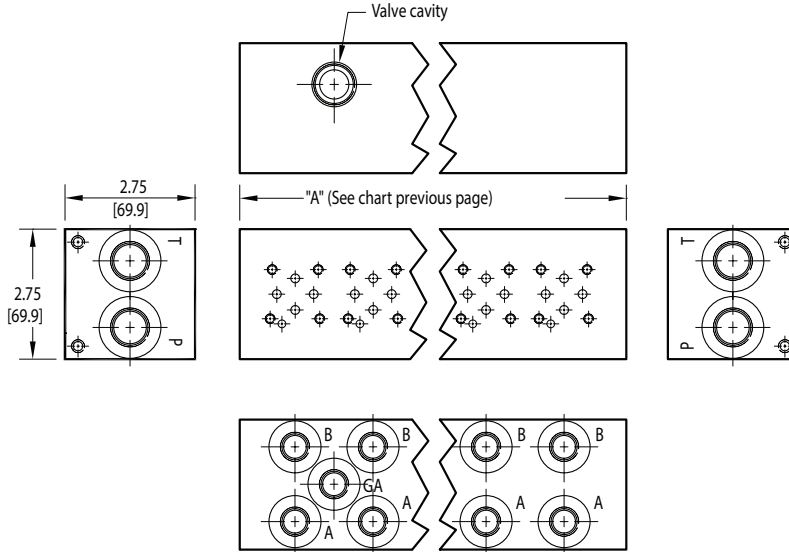
Ordering Information

For **coating options**
see pages 245-246.

Material	Valve Pattern	Circuit	No. of Stations	Valve Spacing	Port Threads	Options																																																																
<table border="1"> <thead> <tr> <th colspan="2">Material</th> </tr> </thead> <tbody> <tr> <td>A</td> <td>Aluminum - 6061-T6 3000† psi • 20.7 MPa</td> </tr> <tr> <td>D</td> <td>Ductile Iron - D4512 5000† psi • 34.5 MPa</td> </tr> <tr> <td colspan="2">† Working pressure should be considered in accordance with ISO 4413 to determine appropriate material type.</td> </tr> </tbody> </table>	Material		A	Aluminum - 6061-T6 3000† psi • 20.7 MPa	D	Ductile Iron - D4512 5000† psi • 34.5 MPa	† Working pressure should be considered in accordance with ISO 4413 to determine appropriate material type.		<table border="1"> <thead> <tr> <th colspan="2">Valve Pattern</th> </tr> </thead> <tbody> <tr> <td>D02</td> <td>ISO 4401-02-01 NFPA T3.5.1-D02 See Tech Information</td> </tr> </tbody> </table>	Valve Pattern		D02	ISO 4401-02-01 NFPA T3.5.1-D02 See Tech Information	<table border="1"> <thead> <tr> <th colspan="2">Circuit</th> </tr> </thead> <tbody> <tr> <td>S</td> <td>Series Circuit</td> </tr> </tbody> </table>	Circuit		S	Series Circuit	<table border="1"> <thead> <tr> <th colspan="2">No. of Stations</th> </tr> </thead> <tbody> <tr> <td colspan="2">Aluminum</td> </tr> <tr> <td>02...04</td> <td>Available with spacing code 1</td> </tr> <tr> <td colspan="2">Ductile Iron</td> </tr> <tr> <td>02...04</td> <td>Available with spacing code 1</td> </tr> </tbody> </table>	No. of Stations		Aluminum		02...04	Available with spacing code 1	Ductile Iron		02...04	Available with spacing code 1	<table border="1"> <thead> <tr> <th colspan="2">Valve Spacing</th> </tr> </thead> <tbody> <tr> <td>1</td> <td>1.50 inch 38.1 mm</td> </tr> </tbody> </table>	Valve Spacing		1	1.50 inch 38.1 mm	<table border="1"> <thead> <tr> <th colspan="2">Port Threads</th> <th>P & T</th> <th>A & B</th> <th>GA</th> </tr> </thead> <tbody> <tr> <td>P</td> <td>NPTF • ANSI B1.20.3</td> <td>0.50</td> <td>0.38</td> <td>0.25</td> </tr> <tr> <td>S</td> <td>SAE • ISO 11926</td> <td>-8</td> <td>-6</td> <td>-6</td> </tr> <tr> <td>B</td> <td>BSPP • ISO 1179</td> <td>0.50</td> <td>0.38</td> <td>none</td> </tr> <tr> <td>M</td> <td>ISO • ISO 6149</td> <td>M18</td> <td>M14</td> <td>none</td> </tr> <tr> <td>T</td> <td>BSPT • ISO 7</td> <td>0.50</td> <td>0.38</td> <td>none</td> </tr> </tbody> </table>	Port Threads		P & T	A & B	GA	P	NPTF • ANSI B1.20.3	0.50	0.38	0.25	S	SAE • ISO 11926	-8	-6	-6	B	BSPP • ISO 1179	0.50	0.38	none	M	ISO • ISO 6149	M18	M14	none	T	BSPT • ISO 7	0.50	0.38	none	<table border="1"> <thead> <tr> <th colspan="2">Options</th> </tr> </thead> <tbody> <tr> <td colspan="2">See next page for available options and ordering codes.</td> </tr> </tbody> </table>	Options		See next page for available options and ordering codes.	
Material																																																																						
A	Aluminum - 6061-T6 3000† psi • 20.7 MPa																																																																					
D	Ductile Iron - D4512 5000† psi • 34.5 MPa																																																																					
† Working pressure should be considered in accordance with ISO 4413 to determine appropriate material type.																																																																						
Valve Pattern																																																																						
D02	ISO 4401-02-01 NFPA T3.5.1-D02 See Tech Information																																																																					
Circuit																																																																						
S	Series Circuit																																																																					
No. of Stations																																																																						
Aluminum																																																																						
02...04	Available with spacing code 1																																																																					
Ductile Iron																																																																						
02...04	Available with spacing code 1																																																																					
Valve Spacing																																																																						
1	1.50 inch 38.1 mm																																																																					
Port Threads		P & T	A & B	GA																																																																		
P	NPTF • ANSI B1.20.3	0.50	0.38	0.25																																																																		
S	SAE • ISO 11926	-8	-6	-6																																																																		
B	BSPP • ISO 1179	0.50	0.38	none																																																																		
M	ISO • ISO 6149	M18	M14	none																																																																		
T	BSPT • ISO 7	0.50	0.38	none																																																																		
Options																																																																						
See next page for available options and ordering codes.																																																																						

Options - D02 Series Manifold

Contact Daman for cavity locations if critical.



Ordering Information



Cavity	
Omit if cavity not required.	
C	Common cavity: With solenoid clearance. C-10-2 (P in nose) For valves w/1" hex max.
S	Sun Cavity T-162A (P in nose) See Tech Info for valves.