



Skyline *Vernet*

SF 1,634 | 3 Bedrooms | 2.5 Bathrooms | 2 Car Garage



The Vernet offers a dynamic layout and design for the most discerning buyers expecting something different in a townhome. A spacious entry on the main floor makes the perfect space to welcome guests or drop your things when returning home. On the second floor, the main living area offers uninterrupted flow from kitchen to dining and living room to deck. Enjoy the versatile bedroom with walk-in closet, that can be used for whatever suites your lifestyle. The third floor completes this dynamic home, providing a wide hall with laundry and dual master suites each featuring a walk-in closet, and private bath.

*Floorplans and renderings are conceptual drawings and may vary from actual plans and homes as built. Options and features may not be available on all homes and are subject to change without notice. Dimensions are approximate. Actual homes may vary from photos and/or drawings which may show upgrades and may not represent the lowest-priced homes in the community.



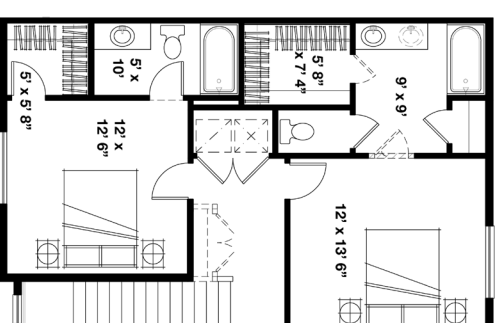
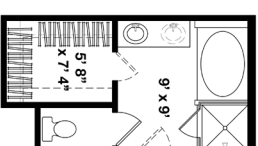
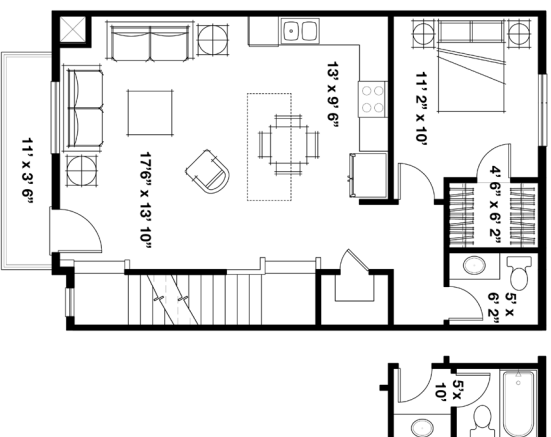
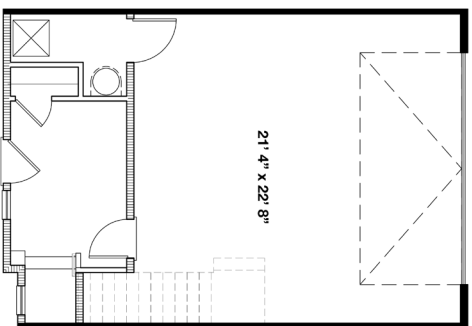
garbetthomes.com





Skyline Vernet

SF 1,634 | 3 Bedrooms | 2.5 Bathrooms | 2 Car Garage



*Floorplans and renderings are conceptual drawings and may vary from actual plans and homes as built. Options and features may not be available on all homes and are subject to change without notice. Dimensions are approximate Actual homes may vary from photos and/or drawings which may show upgrades and may not represent the lowest-priced homes in the community.