



# Skyline *Escher II*

SF 1,624 | 2 Bedrooms + Loft | 2.5 Bathrooms | 2 Car Garage



The Escher is a home with the perfect space for entertaining! Featuring a spacious entry, large family room, dining and spacious kitchen. The generous kitchen island offers plenty of counter space and ample storage. Upstairs, enjoy a large the master suite with multiple closets and full bath with private water closet. An additional bedroom, full bath and versatile loft space complete this home.

\*Floorplans and renderings are conceptual drawings and may vary from actual plans and homes as built. Options and features may not be available on all homes and are subject to change without notice. Dimensions are approximate. Actual homes may vary from photos and/or drawings which may show upgrades and may not represent the lowest-priced homes in the community.



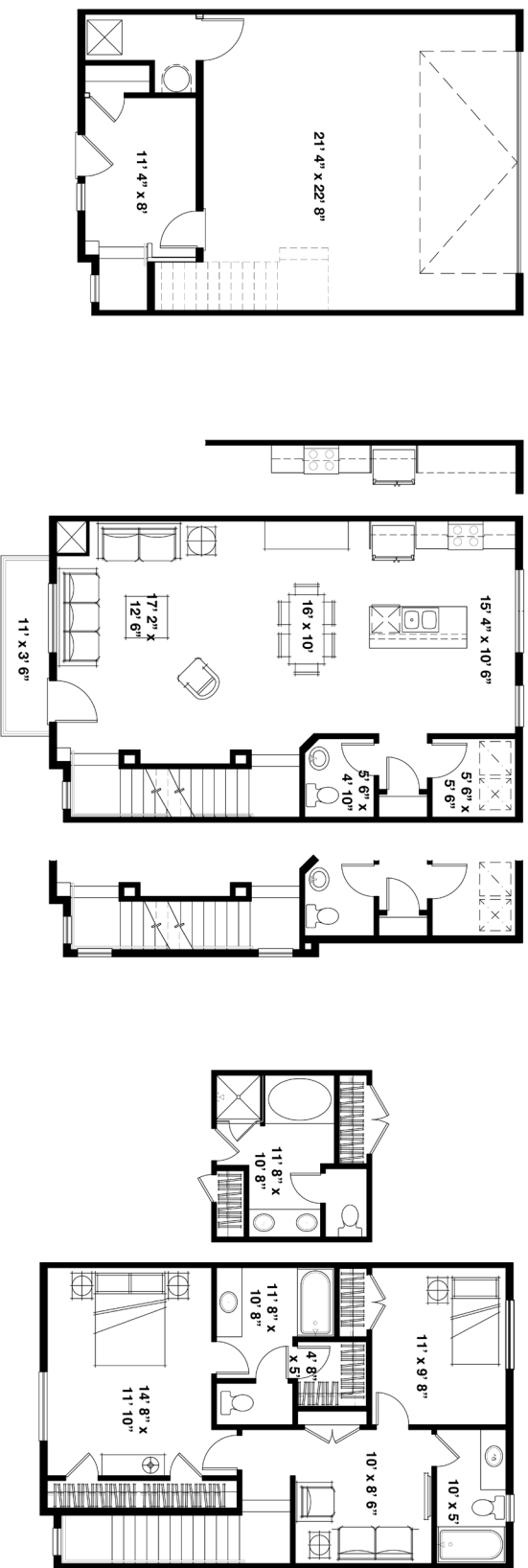
[garbetthomes.com](http://garbetthomes.com)





# Skyline Escher II

SF 1,624 | 2 Bedrooms + Loft | 2.5 Bathrooms | 2 Car Garage



\*Floorplans and renderings are conceptual drawings and may vary from actual plans and homes as built. Options and features may not be available on all homes and are subject to change without notice. Dimensions are approximate. Actual homes may vary from photos and/or drawings which may show upgrades and may not represent the lowest-priced homes in the community.