



Almond Street

Included Features -

Exteriors:

- HERS scores in the 50's (HERS scores are individually tested by 3rd party inspectors, & will vary from home to home)
- Zero Energy Ready Home (As defined by the US Dept of Energy)
- Every Home Energy Star 3.0 Tested & Certified
- Frosted Glass, Aluminum garage doors
- Exterior Finish of Stucco, Aluminum, Brick, Hardie or Certainteed siding & Smart side trims
- Professional full yard landscaping with automated irrigation system
- Flat, Membrane roofs with 25 year limited warranty
- Upgraded large, dual-paned, Low-e fiberglass windows in grey to match exterior design (U-value of .35 or lower)
- Exterior lighting in the front, garage & doorways
- Aluminum gutters and downspouts with baked enamel finish
- Insulated Fiberglass entry door with deadbolt lock
- Outside waterproof electrical outlets, with holiday outlet & switch
- Hose bibs in the garage and rear of home
- Energy efficiency: R-24 walls & R-60 ceilings
- Water tight Composite Material Deck(s) (per plan)
- 220 Volt Outlet at Garage

Interiors:

- 9' high ceilings on 1st & 2nd floor, 8' high ceilings on 3rd floor
- Designer Maple, Beech and Oak cabinets with a Harmony/Mission door style, available in 9 colors
- 2 CM Granite Countertops in kitchen and bath(s)
- Engineered wood flooring in entry, kitchen, & dining
- High quality carpet
- 96% Efficiency tankless water heater
- Attached 2 Car Garage w/ Automatic Opener and Transmitters
- Designer Lighting & Hardware in Brushed Nickel Finish
- Efficient LED light bulbs
- Fire Sprinklers
- Low Voltage TV Outlets & phone jacks
- Washer/Electric Dryer connections
- 2X6 exterior walls with fiberglass blown-in insulation
- Heating & Cooling with 13 SEER central air conditioning unit & 95% high-efficiency furnace
- Passive Radon Mitigation System
- Digital Programmable Thermostat
- Smoke detectors in all living areas & bedrooms with a carbon monoxide detector on each level.
- Wall corners are mini-chamfer for a clean & straight design
- Berkley Style Interior Doors
- Designer 3-1/2" Style Base & Door Casing w/ 4" header & 2 1/4" legs
- Holy-Smooth finish sheet rock walls & textured ceiling with sheetrock wrapped windows
- Upgraded one-tone paint in eggshell finish
- Wood Pantry Shelves w/ Wire Shelving at other closets
- Sheetrock wrapped 1/2 wall stairways with stained handrail

Kitchen:

- Designer Maple, Beech and Oak cabinets with a Harmony/Mission door style, available in 9 colors
- Spacious Kitchen Island w/ 2 CM Granite Countertop & bar overhang
- Engineered wood flooring
- GE Stainless Steel Gas Range
- GE Stainless Steel Microwave
- GE Stainless Steel Dishwasher
- Brush Nickel Moen Sto Style single hole pull down kitchen faucet
- 50/50 Dual Bowl Stainless Steel under-mount sink in island
- Pantry with painted wood shelving
- In-sink Garbage Disposal
- Pre-plumbed water line to Refrigerator

Baths:

- Designer Maple, Beech and Oak cabinets with a Harmony/Mission door style, available in 9 colors
- Quality Moen Level Faucets (chrome finish)
- 2 CM Granite Countertops in all baths
- Ceramic Tile Flooring (also at laundry)
- Tub/Shower Combo w/ Fiberglass Tub & Cultured Marble Surround in Full Baths or Cultured Marble Surround in Shower
- Double sinks in Master Bathroom (per plan)

garbcthomes.com



*Floorplans and renderings are conceptual drawings and may vary from actual plans and homes as built. Options and features may not be available on all homes and are subject to change without notice. Dimensions are approximate. Actual homes may vary from photos and/or drawings which may show upgrades and may not represent the lowest-priced homes in the community. 6/30/2017

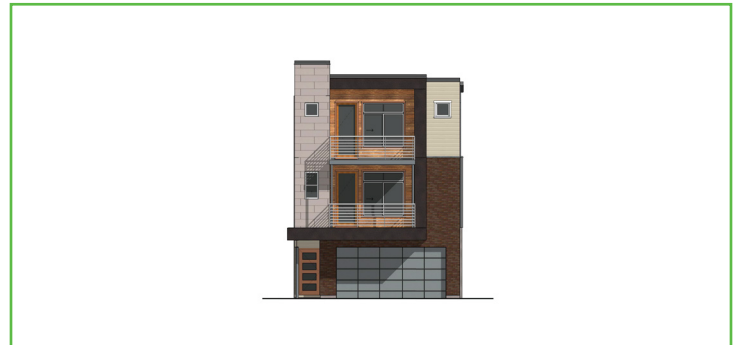


Almond Street

Plan Exclusive -

Andre:

- 2 Bedrooms
- 2 Bathrooms
- 1,295 Finished square feet
- Two car garage w/automatic openers
- 9' Ceilings in Main Living Area
- Private Master Suite w/ Walk-in Closet
- Master Bath w/ Large Shower
- Open Kitchen with Island & Deck space
- Large Open Great Room w/ Patio



Martin:

- 2 Bedrooms- Dual Master Suites
- 2 Bathrooms
- 1,637 Finished square feet
- Spacious Entry w/ Closet
- Two car garage w/ automatic openers
- Dual Master Suites w/ Walk-in Closet
- Master Baths with tub shower or stand alone shower
- Large Open Great Room & Deck space
- Open Kitchen w/ Island & Patio
- Laundry Room



LeWitt:

- 2-3 Bedrooms
- 2.5 Bathrooms
- 2,338 Finished square feet
- Large Bonus Room
- Spacious Entry
- Two car garage w/automatic openers
- 9' Ceilings in Main Living Area
- Large, Private Master Suite w/Generous Walk-in Closet
- Master Suite Sitting Room and Deck
- Master Bath with separate tub/shower & dual vanities
- Large Open Great Room
- Spacious Kitchen w/ Island & Pantry
- Flex Room w/ Patio



*Floorplans and renderings are conceptual drawings and may vary from actual plans and homes as built. Options and features may not be available on all homes and are subject to change without notice. Dimensions are approximate. Actual homes may vary from photos and/or drawings which may show upgrades and may not represent the lowest-priced homes in the community. 6/30/2017



garbetthomes.com

