



Almond Street *LeWitt*

SF 2,841 | 3 Bedrooms | 2.5 Bathrooms | 2 Car Garage



The optimum downtown location is elevated in this dynamic and spacious home. Light and the pull of wide open space bring you in from the home entry to an inviting great room and kitchen, well suited for entertaining. Moving downstairs, you'll enjoy a private half bath for guests and unique bonus room ready for personalization. A large master suite featuring a sitting room with private deck hint at the grandeur of the suite. A more than generous walk-in closet and master bath with dual sinks and a separate tub and shower complete this luxurious room. On the final floor, and completing this home, find two additional bedrooms, full bath, laundry room and versatile bonus room.

*Floorplans and renderings are conceptual drawings and may vary from actual plans and homes as built. Options and features may not be available on all homes and are subject to change without notice. Dimensions are approximate. Actual homes may vary from photos and/or drawings which may show upgrades and may not represent the lowest-priced homes in the community.



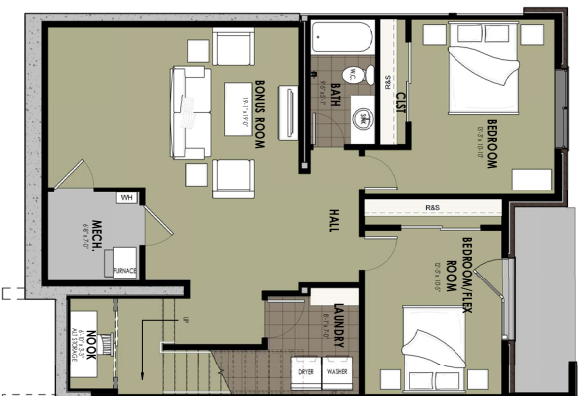
garbetthomes.com





Almond Street *LeWitt*

SF 2,841 | 3 Bedrooms | 2.5 Bathrooms | 2 Car Garage



*Floorplans and renderings are conceptual drawings and may vary from actual plans and homes as built. Options and features may not be available on all homes and are subject to change without notice. Dimensions are approximate. Actual homes may vary from photos and/or drawings which may show upgrades and may not represent the lowest-priced homes in the community.