

OHSP Test Report

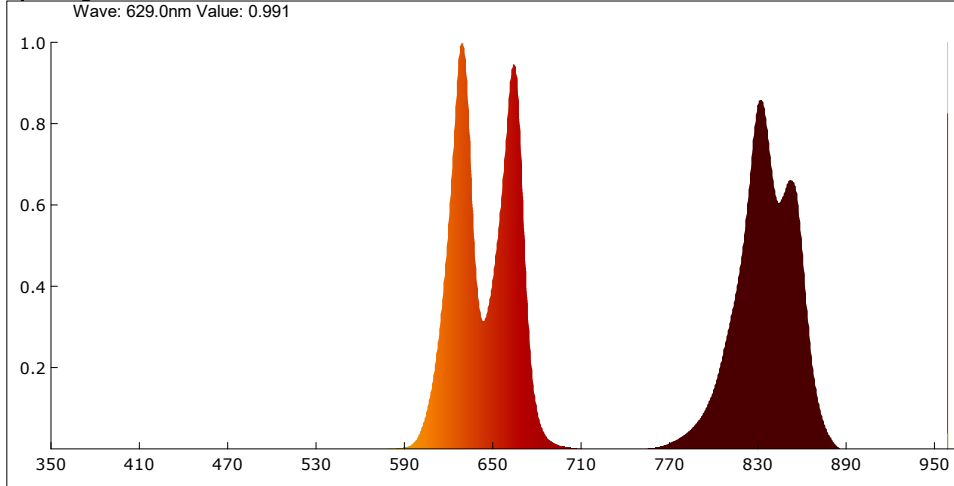
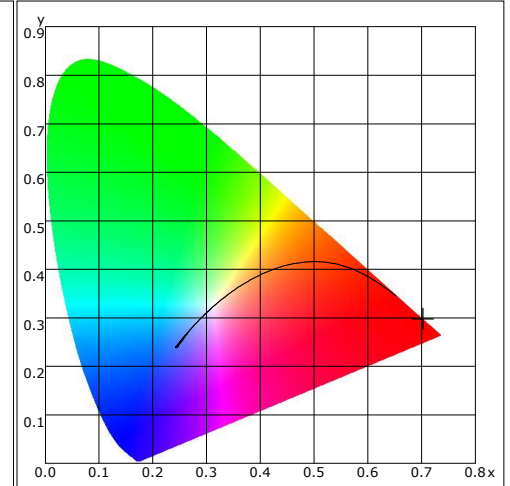
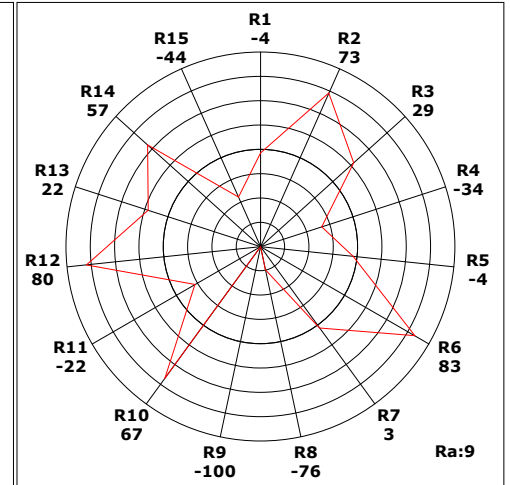
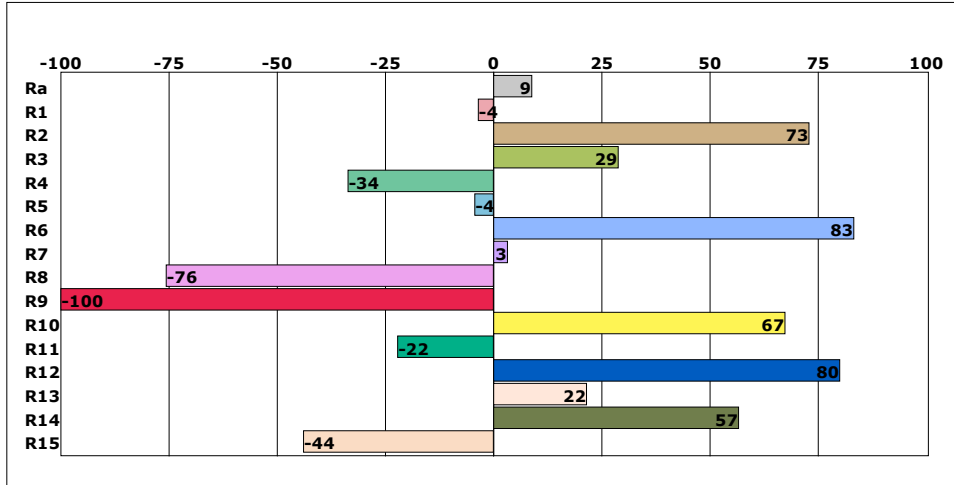
Product Mark

 Model: Derma Red P600 PLUS @ 18 inches
 Temperature: 20°C
 Tester: admin

 Manufacture: Care Lamps
 Humidity: 65%
 Test Date: 2023-01-27,10:53:48

Parameter

Name	Value	Name	Value	Name	Value	Name	Value
E(lx)	26162.73	S/P	0.041	Eb(mW/cm ²)	0.000	PPFD_FR(umol/m ² /s)	43.518
Candle E(fc)	2430.58	Dominant(nm)	626.10	Ey(mW/cm ²)	0.073	PPFD_IR(umol/m ² /s)	11.104
CCT(K)	1001	Purity(%)	100.0	Er(mW/cm ²)	21.049	Kppfv(umol/s/klm)	1384.652
Duv	-0.00904	HalfWidth(nm)	18.3	Euv(mW/cm ²)	0.000	YPPFD(umol/m ² /s)	1087.116
CIE x,y	0.7023,0.2976	Peak(nm)	629.8	Efr(mW/cm ²)	0.000	Ep(mW/cm ²)	20.198
CIE u,v	0.5438,0.3456	Center(nm)	629.0	Eir(mW/cm ²)	19.819	Integral Time(ms)	1
CIE u',v'	0.5438,0.5184	Centroid(nm)	737.6	Ec(mW/cm ²)	41.083	Peak Signal	54063
SDCM	100.00	Color Ratio(RGB)	98.9,1.1,0.0	Erb Ratio	467541.875	Dark Signal	2526
TM-30 Rf	0.00	CIE1931 X	90416.016	PAR(mW/cm ²)	22.068	Compensate level	2992
TM-30 Rg	0.00	CIE1931 Y	38305.602	EchA(mW/cm ²)	0.000		
Ra	8.9	CIE1931 Z	12.604	EchB(mW/cm ²)	0.000		
Ee(mW/cm ²)	41.083	TLCI-2012	2	PPFD(umol/m ² /s)	1138.559		
Ebh(mW/m ²)	0.02	FlickerFrequency Hz	0.00	PPFD_UV(umol/m ² /s)	0.000		
Bek(uW/lm)	0.00	FluctuateDepth(%)	0.0	PPFD_B(umol/m ² /s)	0.002		
Ebh(S)	403.99	BinkPercent(%)	0.0	PPFD_G(umol/m ² /s)	3.634		
RiskLevel	0	BinkExponent	0.00	PPFD_R(umol/m ² /s)	1134.924		

Spectrogram

CIE1931

CRI

Instrument Status

 Type: OHSP-350SF
 Integral Time: 0.885ms

 SN: 0
 VPeak: 54063

 Scan Range: 350-950nm
 VDark: 2526

Remark: