

OHSP Test Report

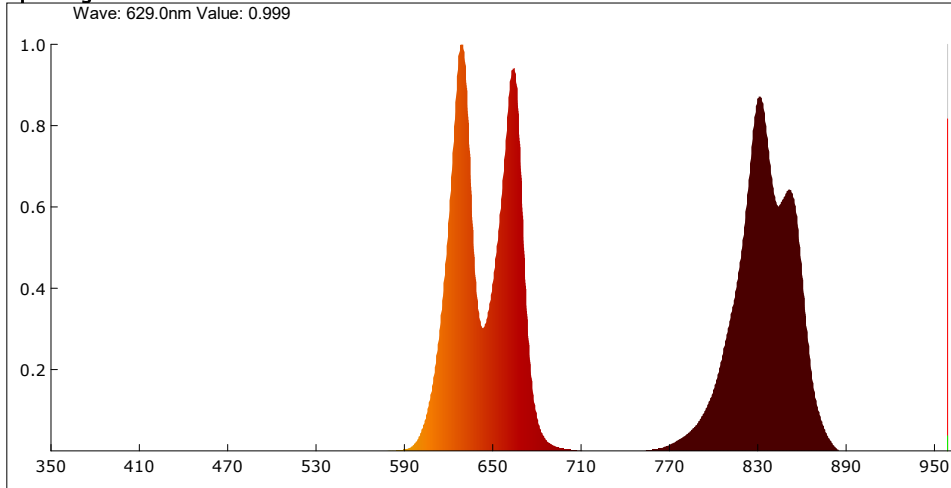
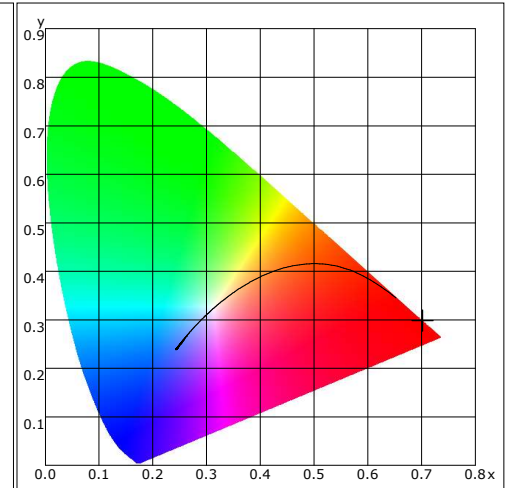
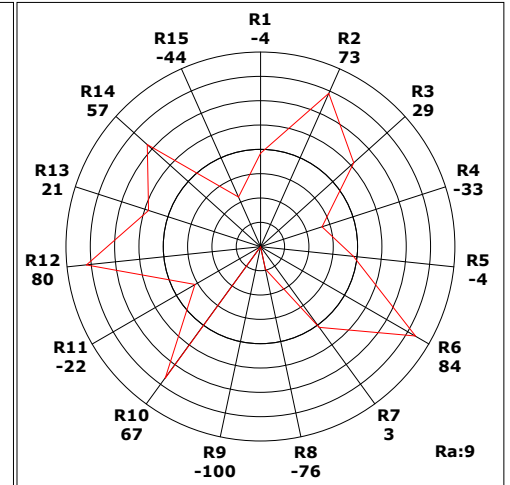
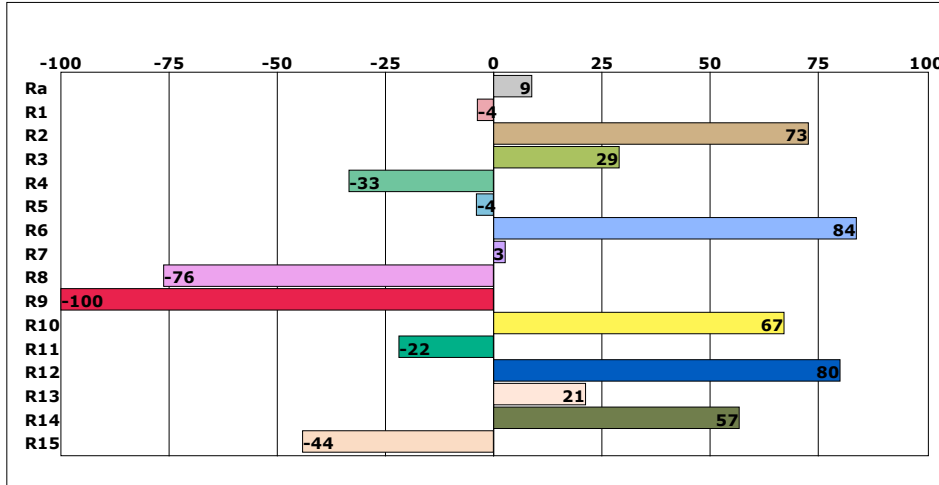
Product Mark

 Model: Derma Red P600 PLUS @ 12 inches
 Temperature: 20°C
 Tester: admin

 Manufacture: Care Lamps
 Humidity: 65%
 Test Date: 2023-01-27,10:52:53

Parameter

Name	Value	Name	Value	Name	Value	Name	Value
E(Ix)	33499.19	S/P	0.041	Eb(mW/cm ²)	0.000	PPFD_FR(umol/m ² /s)	43.020
Candle E(fc)	3112.15	Dominant(nm)	626.00	Ey(mW/cm ²)	0.097	PPFD_IR(umol/m ² /s)	15.495
CCT(K)	1001	Purity(%)	100.0	Er(mW/cm ²)	26.654	Kppfv(umol/s/klm)	1762.450
Duv	-0.00900	HalfWidth(nm)	17.8	Euv(mW/cm ²)	0.000	YFPD(umol/m ² /s)	1377.840
CIE x,y	0.7021,0.2978	Peak(nm)	629.8	Efr(mW/cm ²)	0.000	Ep(mW/cm ²)	25.605
CIE u,v	0.5433,0.3456	Center(nm)	628.7	Eir(mW/cm ²)	25.254	Integral Time(ms)	1
CIE u',v'	0.5433,0.5185	Centroid(nm)	737.3	Ec(mW/cm ²)	52.224	Peak Signal	53522
SDCM	100.00	Color Ratio(RGB)	98.9,1.1,0.0	Erb Ratio	66175.734	Dark Signal	2474
TM-30 Rf	0.00	CIE1931 X	115649.898	PAR(mW/cm ²)	28.022	Compensate level	2992
TM-30 Rg	0.00	CIE1931 Y	49047.129	EchA(mW/cm ²)	0.000		
Ra	8.9	CIE1931 Z	21.350	EchB(mW/cm ²)	0.000		
Ee(mW/cm ²)	52.224	TLCI-2012	2	PPFD(umol/m ² /s)	1441.132		
Ebh(mW/m ²)	0.03	FlickerFrequency Hz	0.00	PPFD_UV(umol/m ² /s)	0.000		
Bek(uW/lm)	0.00	FluctuateDepth(%)	0.0	PPFD_B(umol/m ² /s)	0.014		
Ebh(S)	317.48	BinkPercent(%)	0.0	PPFD_G(umol/m ² /s)	4.831		
RiskLevel	0	BinkExponent	0.00	PPFD_R(umol/m ² /s)	1436.287		

Spectrogram

CIE1931

CRI

Instrument Status

 Type: OHSP-350SF
 Integral Time: 0.677ms

 SN: 0
 VPeak: 53522

 Scan Range: 350-950nm
 VDark: 2474

Remark: