

OHSP Test Report

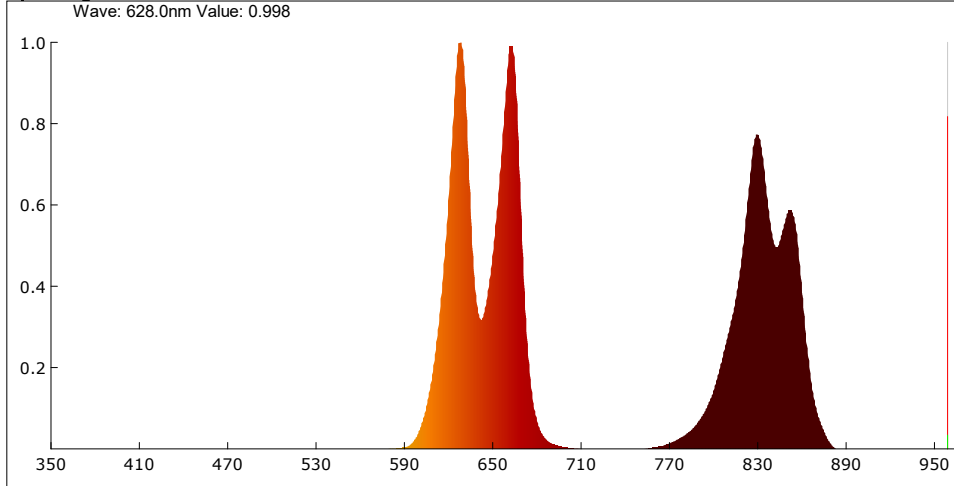
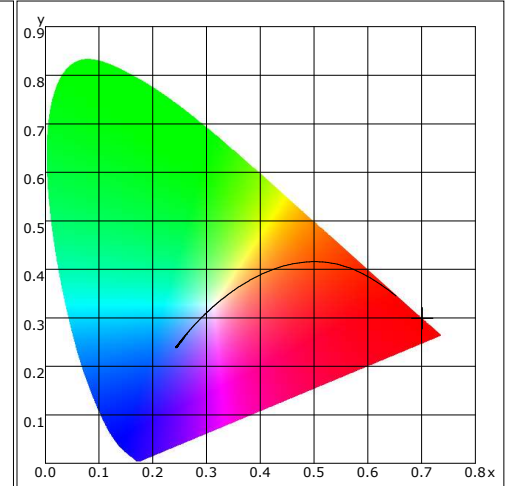
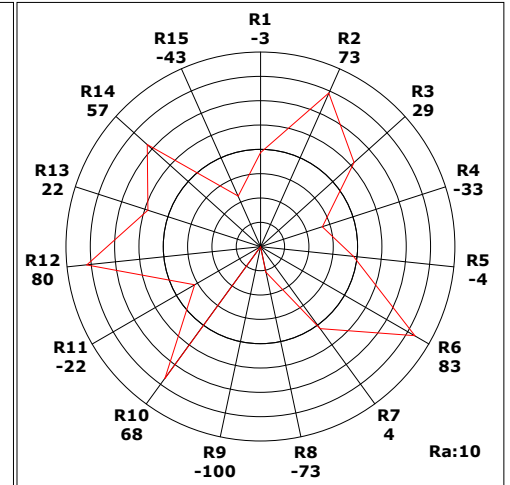
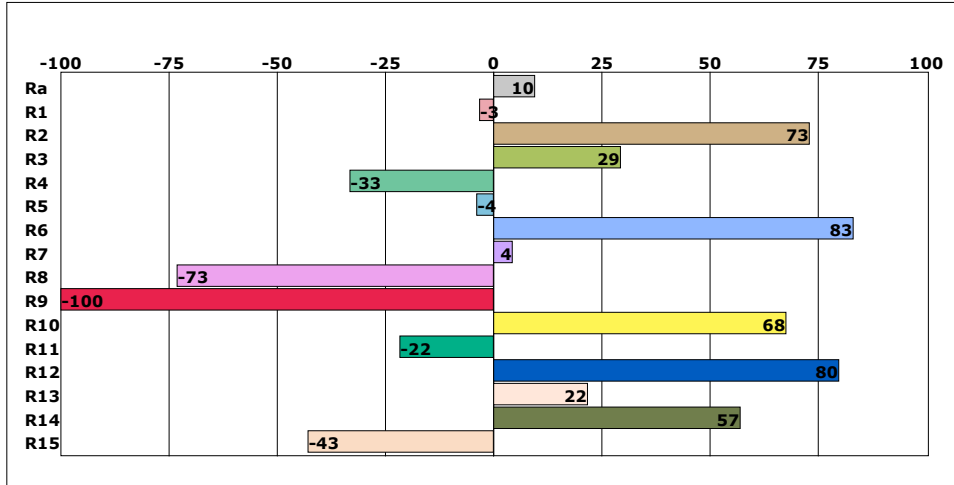
Product Mark

 Model: Derma Red P300 PLUS @ 6 inches
 Temperature: 20°C
 Tester: admin

 Manufacture: Care Lamps
 Humidity: 65%
 Test Date: 2023-01-27,10:47:30

Parameter

Name	Value	Name	Value	Name	Value	Name	Value
E(lx)	56678.43	S/P	0.042	Eb(mW/cm ²)	0.000	PPFD_FR(umol/m ² /s)	41.931
Candle E(fc)	5265.55	Dominant(nm)	625.40	Ey(mW/cm ²)	0.186	PPFD_IR(umol/m ² /s)	22.725
CCT(K)	1001	Purity(%)	100.0	Er(mW/cm ²)	43.973	Kppfv(umol/s/klm)	2515.436
Duv	-0.00878	HalfWidth(nm)	17.8	Euv(mW/cm ²)	0.000	YFPD(umol/m ² /s)	2275.273
CIE x,y	0.7012,0.2987	Peak(nm)	628.8	Efr(mW/cm ²)	0.000	Ep(mW/cm ²)	42.308
CIE u,v	0.5412,0.3459	Center(nm)	627.8	Eir(mW/cm ²)	36.075	Integral Time(ms)	0
CIE u',v'	0.5412,0.5188	Centroid(nm)	729.8	Ec(mW/cm ²)	80.586	Peak Signal	53599
SDCM	100.00	Color Ratio(RGB)	98.8,1.2,0.0	Erb Ratio	109605.125	Dark Signal	2223
TM-30 Rf	0.00	CIE1931 X	194794.625	PAR(mW/cm ²)	46.073	Compensate level	2992
TM-30 Rg	0.00	CIE1931 Y	82984.516	EchA(mW/cm ²)	0.000		
Ra	9.6	CIE1931 Z	32.088	EchB(mW/cm ²)	0.000		
Ee(mW/cm ²)	80.586	TLCI-2012	2	PPFD(umol/m ² /s)	2376.582		
Ebh(mW/m ²)	0.04	FlickerFrequency Hz	0.00	PPFD_UV(umol/m ² /s)	0.000		
Bek(uW/lm)	0.00	FluctuateDepth(%)	0.0	PPFD_B(umol/m ² /s)	0.014		
Ebh(S)	189.88	BinkPercent(%)	0.0	PPFD_G(umol/m ² /s)	9.279		
RiskLevel	0	BinkExponent	0.00	PPFD_R(umol/m ² /s)	2367.289		

Spectrogram

CIE1931

CRI

Instrument Status

 Type: OHSP-350SF
 Integral Time: 0.421ms

 SN: 0
 VPeak: 53599

 Scan Range: 350-950nm
 VDark: 2223

Remark: