

# OHSP Test Report

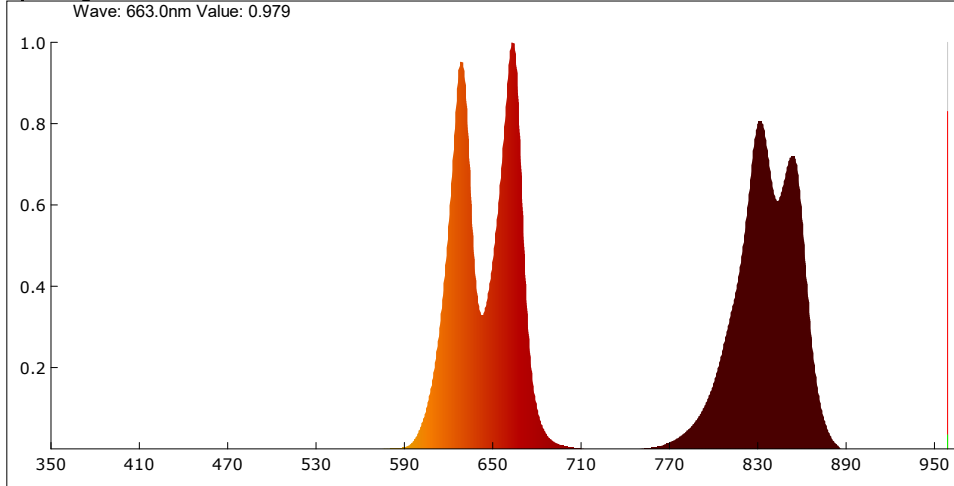
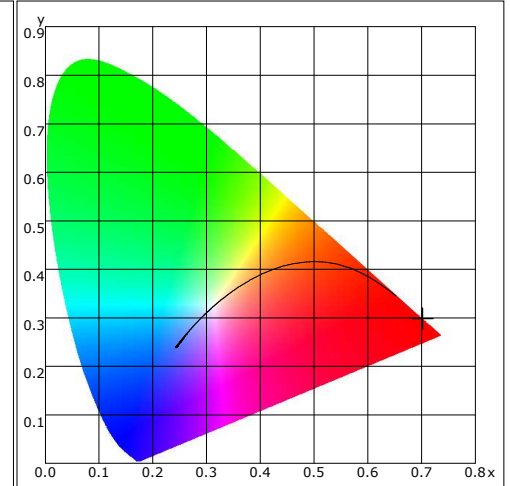
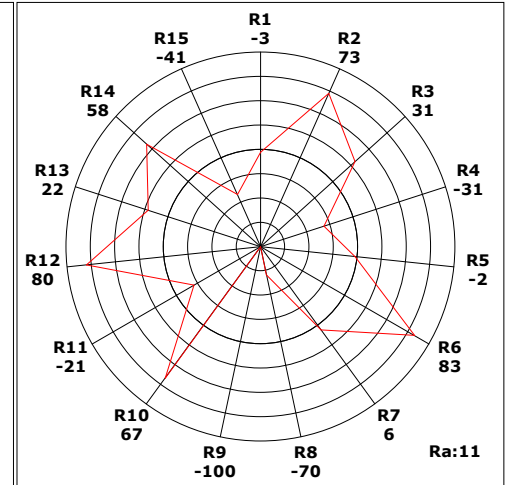
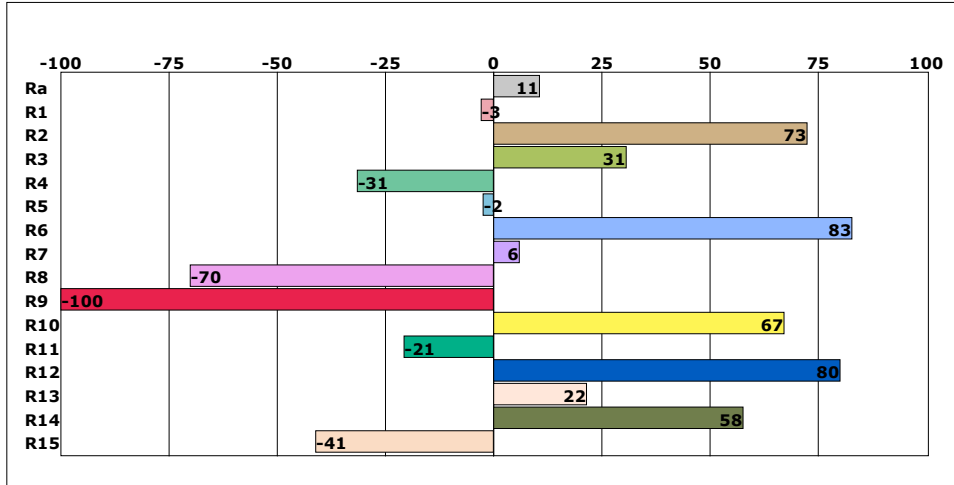
**Product Mark**

 Model: Derma Red P300 PLUS @ 18 inches  
 Temperature: 20°C  
 Tester: admin

 Manufacture: Care Lamps  
 Humidity: 65%  
 Test Date: 2023-01-27,10:48:54

**Parameter**

| Name                    | Value         | Name                | Value        | Name                            | Value      | Name                            | Value    |
|-------------------------|---------------|---------------------|--------------|---------------------------------|------------|---------------------------------|----------|
| E(Ix)                   | 24491.28      | S/P                 | 0.042        | Eb(mW/cm <sup>2</sup> )         | 0.000      | PPFD_FR(umol/m <sup>2</sup> /s) | 44.127   |
| Candle E(fc)            | 2275.30       | Dominant(nm)        | 625.80       | Ey(mW/cm <sup>2</sup> )         | 0.093      | PPFD_IR(umol/m <sup>2</sup> /s) | 12.333   |
| CCT(K)                  | 1001          | Purity(%)           | 100.0        | Er(mW/cm <sup>2</sup> )         | 19.946     | Kppfv(umol/s/klm)               | 1336.359 |
| Duv                     | -0.00892      | HalfWidth(nm)       | 19.5         | Euv(mW/cm <sup>2</sup> )        | 0.000      | YPPFD(umol/m <sup>2</sup> /s)   | 1030.875 |
| CIE x,y                 | 0.7018,0.2981 | Peak(nm)            | 664.3        | Efr(mW/cm <sup>2</sup> )        | 0.000      | Ep(mW/cm <sup>2</sup> )         | 19.137   |
| CIE u,v                 | 0.5425,0.3457 | Center(nm)          | 661.9        | Eir(mW/cm <sup>2</sup> )        | 19.116     | Integral Time(ms)               | 1        |
| CIE u',v'               | 0.5425,0.5186 | Centroid(nm)        | 738.9        | Ec(mW/cm <sup>2</sup> )         | 39.330     | Peak Signal                     | 54403    |
| SDCM                    | 100.00        | Color Ratio(RGB)    | 98.5,1.5,0.0 | Erb Ratio                       | 122139.352 | Dark Signal                     | 2288     |
| TM-30 Rf                | 0.00          | CIE1931 X           | 84409.789    | PAR(mW/cm <sup>2</sup> )        | 21.045     | Compensate level                | 2992     |
| TM-30 Rg                | 0.00          | CIE1931 Y           | 35858.387    | EchA(mW/cm <sup>2</sup> )       | 0.000      |                                 |          |
| Ra                      | 10.7          | CIE1931 Z           | 13.956       | EchB(mW/cm <sup>2</sup> )       | 0.000      |                                 |          |
| Ee(mW/cm <sup>2</sup> ) | 39.330        | TLCI-2012           | 2            | PPFD(umol/m <sup>2</sup> /s)    | 1080.722   |                                 |          |
| Ebh(mW/m <sup>2</sup> ) | 0.02          | FlickerFrequency Hz | 0.00         | PPFD_UV(umol/m <sup>2</sup> /s) | 0.000      |                                 |          |
| Bek(uW/lm)              | 0.00          | FluctuateDepth(%)   | 0.0          | PPFD_B(umol/m <sup>2</sup> /s)  | 0.006      |                                 |          |
| Ebh(S)                  | 422.45        | BinkPercent(%)      | 0.0          | PPFD_G(umol/m <sup>2</sup> /s)  | 4.612      |                                 |          |
| RiskLevel               | 0             | BinkExponent        | 0.00         | PPFD_R(umol/m <sup>2</sup> /s)  | 1076.104   |                                 |          |

**Spectrogram**

**CIE1931**

**CRI**

**Instrument Status**

 Type: OHSP-350SF  
 Integral Time: 1.000ms

 SN: 0  
 VPeak: 54403

 Scan Range: 350-950nm  
 VDark: 2288

Remark: