

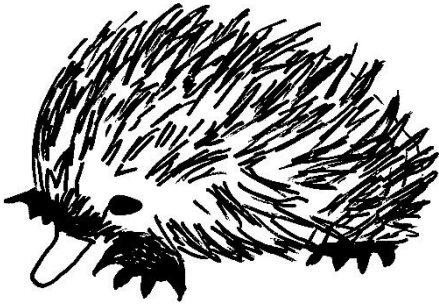


Bangor



WHO AM I - MATCH UP ACTIVITY

All the native animals below are found in Tasmania and at Bangor. Can you match them up? Draw a line from the picture to the description of the animal. Which native animal is your favourite?



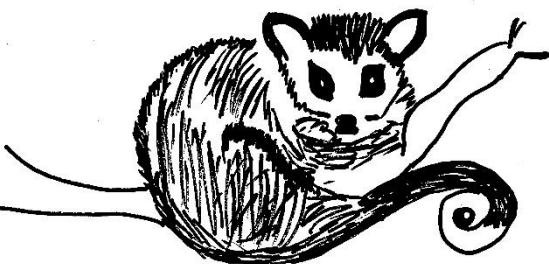
Echidna (*Tachyglossus aculeatus*)

I have black fur with a white neck and rump. Powerful jaws and claws. I eat dead animals and will hunt small animals and birds. I look and sound fierce. I have a den in rock piles and hollow logs. You can see me at night.



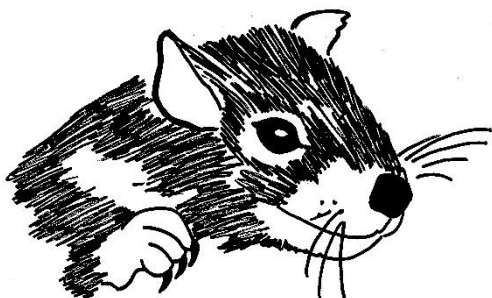
Wombat (*Vombatus ursinus*)

I have spines on my back and tail, with brown fur between my spines. I have powerful digging claws. I can grow up to 40 cm long. I have a long sticky tongue to collect ants and termites. I can be seen during the day if the temperature is cool.



Ringtail possum (*Pseudocheirus peregrinus*)

I am large and powerful, have little round ears and small eyes. I have a very short tail and powerful digging forefeet. I eat leaves and roots. I live in burrows. I have a broad, blunt head and a strong, bony rump.



Tasmanian devil (*Sarcophilus harrisi*)

I am medium build. I have short, white-backed ears, a pointed face and grey fur with a lighter belly. I have a long white-tipped tail. I eat leaves, flowers and buds. I am very seldom found on the ground. I build a very substantial nest.