



## s.95 NPT nickel plated

full port 1/4" - 4"  
hot forged brass ball valve



### Quality

- 24h 100% seal test guaranteed
- Dual sealing system allows valve to be operated in either direction making installation easier
- No metal-to-metal moving parts
- No maintenance ever required
- Handle clearly shows ball position
- Silicone-free lubricant on all seals
- Chrome plated brass ball for longer life
- Handle stops on body to avoid stress at stem

### Body

- Hot forged sand blasted, nickel plated brass body and cap sealed with Loctite® or equivalent thread sealant
- Finest brass according to EN 12165 and EN 12164 (formerly DIN 17660 and UNI 5705-65) specifications

### Stem

- Blowout-proof nickel plated brass stem
- Maintenance-free, double FPM O-rings at the stem for maximum safety

### Sealing

- Pure PTFE self-lubricating seats with flexible-lip design

### Threads

- NPT taper ANSI B.1.20.1 female by female threads



### Flow

- Full port to DIN 3357 for maximum flow

### Handle

- Geomet® carbon steel handle with thick PVC dip coating. Handle coating offers both thermal and electrical protection
- **WARNING:** do not exceed reasonable temperature and/or electrical load
- Handle removable with valve in service

### Working pressure & temperature

- 600 PSI up to 2", 450 PSI over 2" non-shock cold working pressure
- -40°F/+350°F
- **WARNING:** freezing of the fluid in the installation may severely damage the valve

### Options up to 2" size

- Stem extension
- T-handle
- AISI 430 stainless steel handle
- Oval lockable handle up to 2", round over 2"
- Patented locking device for valves up to 4"
- Stubby handle
- **RuB** memory stop designed to be installed with our stubby handle

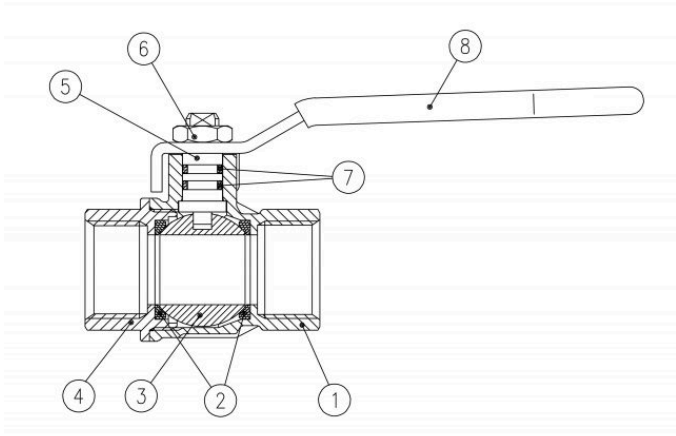
### Upon request

- AISI 316 stainless steel ball
- Glass filled PTFE seals
- Custom design
- Special configuration for industrial oxygen application

### Approved by or in compliance with

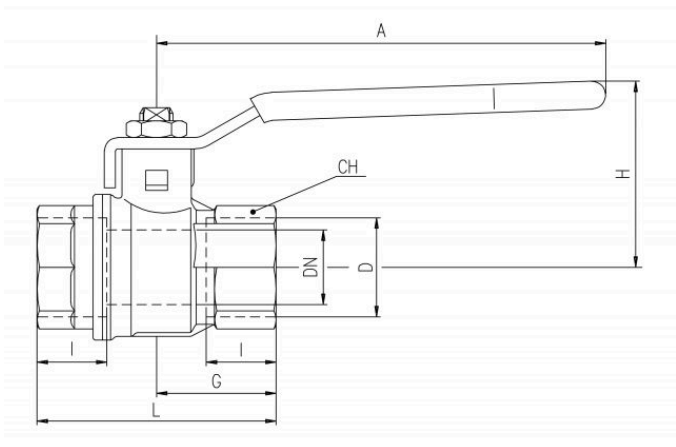
- Canadian standards Association (United States, Canada)
- Factory Mutual (United States)
- GOST-R (Russia)
- RoHS Compliant (EU)
- Underwriters Laboratories (United States & Canada)

**NOTE:** approvals apply to specific configurations/sizes only.



	PART DESCRIPTION	Q.TY	MATERIAL
1	Nickel plated NPT body	1	CW617N
2	Seat	2	PTFE
3	Chrome plated ball	1	CW617N
4	Nickel plated NPT end-cap	1	CW617N
5	Nickel plated stem O-ring design	1	CW617N
6	Geomet® nut	1	CB4FF
7	O-Ring	2	FPM
8	Yellow PVC coated Geomet® steel handle	1	DD11

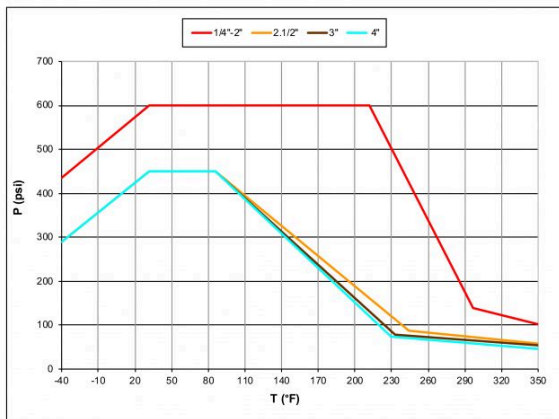
1.1/4"-2" hollow ball



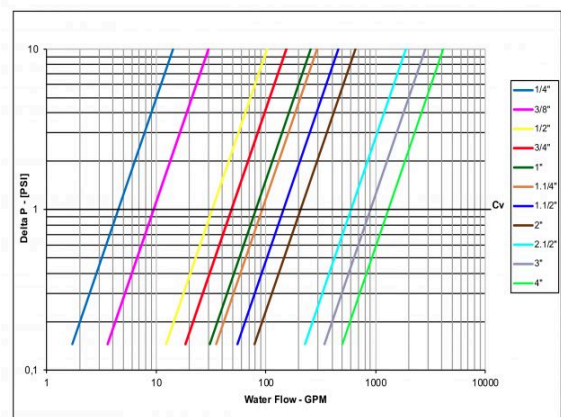
Code	S95B41N	S95C41N	S95D41N	S95E41N	S95F41N	S95G41N	S95H41N	S95I41N	S95L41N	S95M41N	S95N41N
D (inch)	1/4	3/8	1/2	3/4	1	1 1/4	1 1/2	2	2 1/2	3	4
DN (inch)	0.315	0.394	0.590	0.787	0.984	1.260	1.575	1.968	2.559	3.150	3.937
I (inch)	0.472	0.472	0.610	0.669	0.826	0.905	0.905	1.043	1.260	1.377	1.633
L (inch)	1.771	1.771	2.322	2.519	3.188	3.661	4.015	4.763	6.141	6.968	8.504
G (inch)	0.885	0.885	1.161	1.259	1.594	1.830	2.007	2.381	3.070	3.484	4.252
A (inch)	3.228	3.228	3.937	4.724	4.724	6.220	6.220	6.220	10.039	10.039	10.039
H (inch)	1.496	1.496	1.693	1.968	2.126	2.874	3.110	3.386	5.197	5.512	6.063
CH (inch)	0.787	0.787	0.984	1.220	1.574	1.929	2.125	2.696	3.346	3.897	4.921
Cv (GPM)	4.5	9.5	32.3	48.5	80.9	92.4	144.4	206.8	596.2	896.5	1305.5

DN shows the nominal flow diameter. Actual flow diameter complies with full port DIN 3357 part 4. Stem configuration of valves over 2" is slightly different.

Pressure-temperature chart



Pressure drop chart



Ask for additional information on the whole range of **RuB** products and consult with your supplier for special applications.  
For complete disclaimer: [www.rubinc.com/disclaimer](http://www.rubinc.com/disclaimer)